



# Why KPMG?



01

## **Our partnerships:**

Our approach involves bringing together input from regional and global certification bodies, universities, industry experts and academics in order to promote effective and lasting development for our clients.



02

## **Our experience:**

KPMG has a global network of member firms who have shaped a variety of learning solutions to deliver in-depth development programs. Our unique collaboration with our global network of member firms allows us to bring leading learning solutions to you.



03

## **Our expertise:**

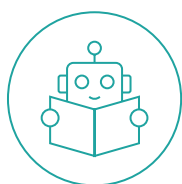
Our cross-functional collaboration (across Advisory and Tax practices) allows us to provide dynamic solutions aligned to changing market needs, understand our clients' businesses better and leverage our global expertise to provide us a competitive edge



04

## **Our expert team and SMEs:**

Our engagement teams comprise industry specialists and subject matter experts with certified instructional designers and relevant development credentials. Our practitioners have real life experience with the challenges faced and exposure to corporate realities, which makes learning more pragmatic



05

## **Digitally enabled learning:**

Through our partnerships, we have access to a variety of robust technology platforms and learner management systems to actively track, monitor and report learning activity. These platforms leverage advanced analytics to report learning effectiveness.