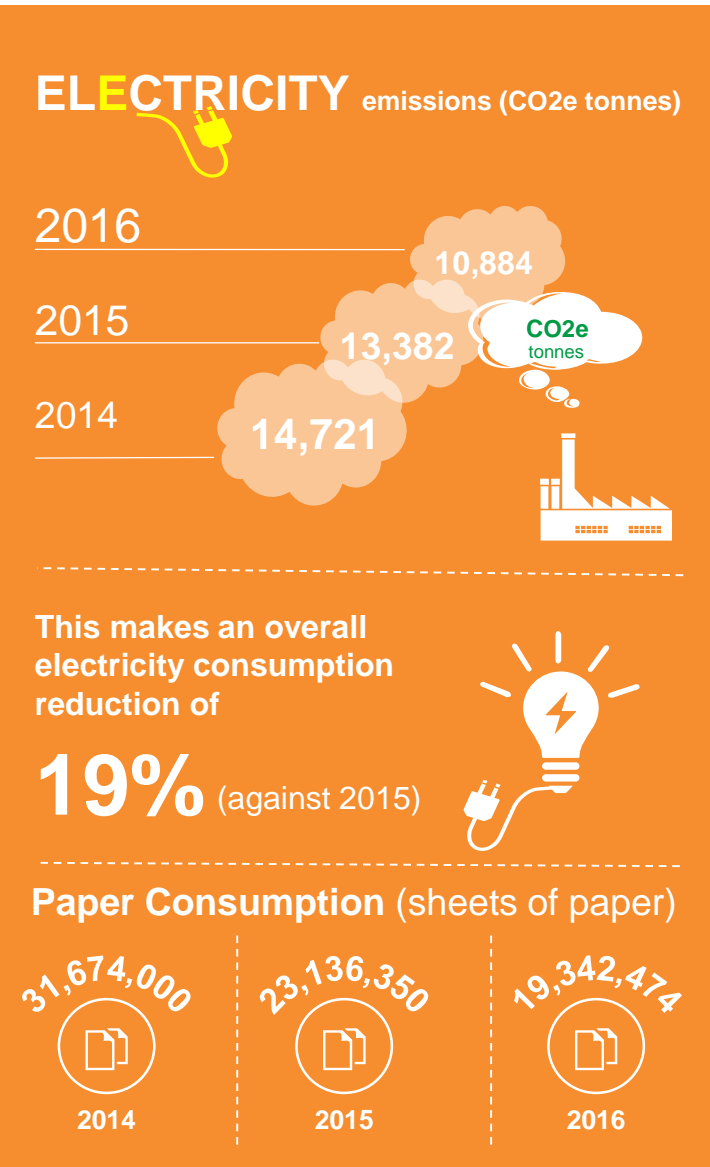
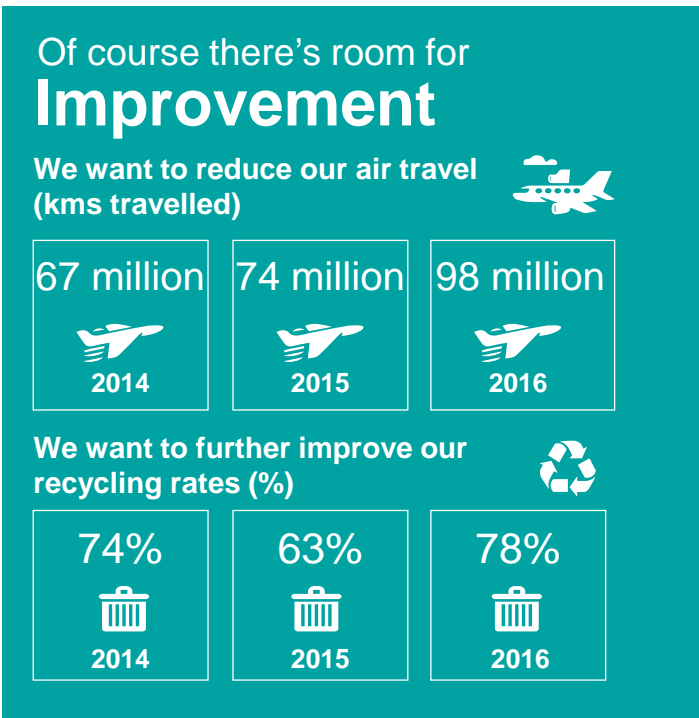
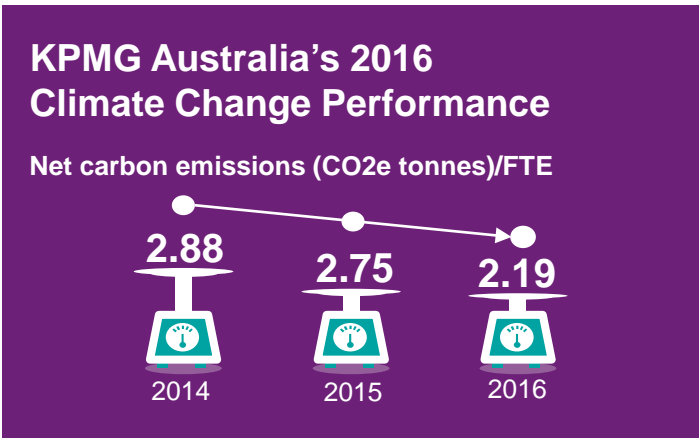




KPMG Australia Climate Change Performance

KPMG’s most material environmental impact is the carbon emissions associated with our operations and travel. We are one of over 40 KPMG member firms to take part in the **Global Climate Response**, a global commitment to address climate change.



Phase 3 of the Global Climate Response (2016-2020) has adopted 2 key target metrics = 10% Reduction in Net emissions/FTE 60% Renewable energy target

OVERALL WE WILL AIM TO MEET THE TARGETS BY:

RENEWABLE ENERGY

Exploring the possibility of sourcing energy from renewable sources

GREEN BUILDINGS

Moving our Sydney and Melbourne offices into buildings promoting a healthy environment

CARBON OFFSETS

Purchasing carbon credits to offset our emissions from air travel