



Income Tax Classifier

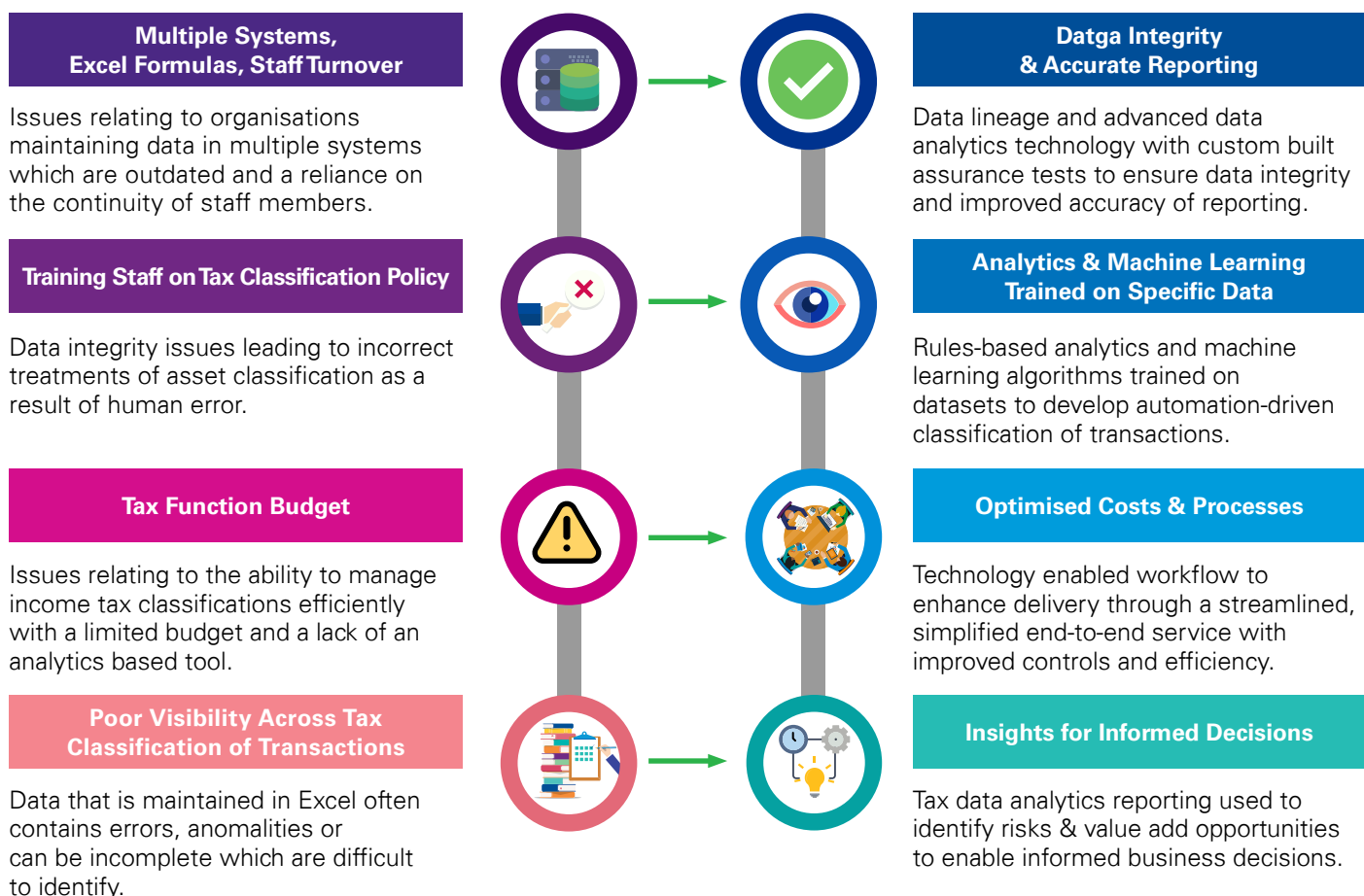
**Data Analytics and Machine Learning
– A new way to review income tax
classifications of transactions**

Traditionally, many organisations devote valuable resources to manually reviewing transactional data, which forms the basis of their tax compliance workpapers. Tax personnel use varying methods to perform such reviews and typically, this line-by-line analysis involves the use of heavily customised and complex Excel documents, random sampling, and application of high materiality thresholds. Given the volume of work required to prepare and validate tax returns, the ability to review and gain comfort over the veracity and integrity of the underlying transaction data is often limited by time and resource capacity constraints. Today, tax functions are increasingly seeking ways to automate their recurring tax return review processes and free up valuable resources to focus on business strategy and key value-adding tasks.

KPMG Income Tax Classifier combines data analytics, machine learning and automation capabilities with tax technical expertise to automate the income tax classifications of your corporate transactions.

KPMG Income Tax Classifier automates the manual task of line-by-line reviews of General Ledger ("GL") transactions, purchase orders and invoice text and can support the classification of transaction items into Capital vs Non-Capital, Deductible vs Non-Deductible, Assessable vs Non-Assessable, Incurred vs Not Incurred, Derived vs Not Derived, as well as other classifications such as Fringe Benefits Tax (FBT). This enables your tax team to accurately and efficiently create tax-sensitised GL accounts to map into the tax calculations.

Meeting the challenges in reviewing transactions for tax purposes



Further considerations:

- The Australian Tax Office (ATO) are increasingly reviewing companies under the Justified Trust initiative, applying data analytical approaches in their review. Given that the responsibility for income tax classifications and tax return disclosures resides with the tax function, it is critical that such functions have confidence in the integrity of the underlying transactional data. With KPMG Income Tax Classifier supports tax functions gain confidence in their data and their tax return disclosures.
- KPMG Income Tax Classifier's rules-based analytics and machine learning algorithms can be customised and trained on each businesses unique data, improving over time for automated income tax classifications of transactions to support tax sensitised accounts. Additional testing can be included over time to meet newly identified risks or changing Tax Authority expectations.
- KPMG Income Tax Classifier is a scalable solution that can grow as transactional volume grows. It can also incorporate additional data sets from different sub system.

How It Works: a module approach to Tax Classification problems

Income Tax Classifier is applied to analyse transactions in GL accounts and sub systems such as:

- Repair & Maintenance
- Entertainment
- Legal / Consulting Fees
- Accrued Expenses
- Accrued Revenue
- Capitalised Items
- Prepayments
- Other accounts which require tax classifications at the transaction level.

Granular level transactional data and other source data can be combined as part of Income Tax Classifier.



1 KPMG's data specialists work with your team to extract data from business systems.



2 KPMG's data specialists cleanse, reconcile and load the data using KPMG's proprietary data analytics and machine learning tools.



3 Produce data visualisation report and income tax classification output for validation in order to allocate exceptions to tax-sensitised GL accounts for mapping into the tax calculation.

Case study

A large Australian multi-national had 2 full time management accountants supporting the Tax Manager review various GL expense accounts to identify capital vs non-capital items. This review involved the manual analysis of over 50,000 lines of transactional sub system and GL data. Due to headcount pressures and an internal finance transformation this work was reallocated to the incumbent tax manager who did not have capacity for the manual and time consuming task.

KPMG Income Tax Classifier was deployed to automate the manual data cleansing processes such as removing accruals and reversals based on transaction codes, descriptions and net amounts. In addition KPMG Income Tax Classifier applied a rules-based and machine learning approach to identify potential capital items in the transactions of the GL accounts for validation with minimal false positives.

The tax function benefitted from KPMG's proprietary dictionary of repair and capital-related terms and phrases. In addition, overlaying industry-specific keywords along with KPMG's in-depth knowledge of bespoke ERP's and business systems created a robust framework to effectively manage their tax classifications.

What was a mammoth task of manually reviewing up to 50,000 transactions per year has been reduced to less than 250 material exceptions for the Tax Manager.

Contact Us

For more information on KPMG Income Tax Classifier or to arrange a demo, please contact your KPMG Tax Advisor.

Technology & Innovation – Deals, Tax & Legal

Tax Data Analytics

Barry Sullivan
Director

T: +61 2 9335 8767
E: busullivan1@kpmg.com.au

Peter Xing
Senior Manager

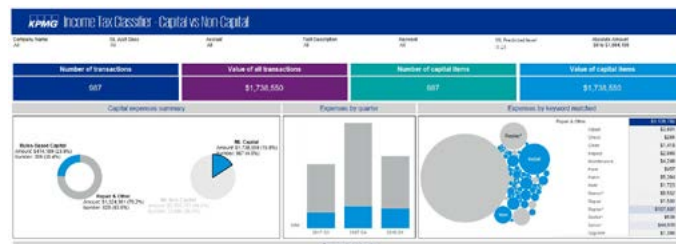
T: +61 2 9335 8328
E: pxing1@kpmg.com.au

Kimberly Schreiber
Manager

T: +61 2 9335 7376
E: kschreiber@kpmg.com.au

KPMG.com.au

Sample deliverables



Item	Category	Amount	Description	Capital Item	Non-Capital Item
107	Capital	\$1,736,550	107	Capital	Non-Capital
107	Capital	\$1,736,550	107	Capital	Non-Capital
107	Capital	\$1,736,550	107	Capital	Non-Capital
107	Capital	\$1,736,550	107	Capital	Non-Capital
107	Capital	\$1,736,550	107	Capital	Non-Capital



The information contained in this document is of a general nature and is not intended to address the objectives, financial situation or needs of any particular individual or entity. It is provided for information purposes only and does not constitute, nor should it be regarded in any manner whatsoever, as advice and is not intended to influence a person in making a decision, including, if applicable, in relation to any financial product or an interest in a financial product. Although we endeavour to provide accurate and timely information, there can be no guarantee that such information is accurate as of the date it is received or that it will continue to be accurate in the future. No one should act on such information without appropriate professional advice after a thorough examination of the particular situation.

To the extent permissible by law, KPMG and its associated entities shall not be liable for any errors, omissions, defects or misrepresentations in the information or for any loss or damage suffered by persons who use or rely on such information (including for reasons of negligence, negligent misstatement or otherwise).

© 2020 KPMG, an Australian partnership and a member firm of the KPMG network of independent member firms affiliated with KPMG International Cooperative ("KPMG International"), a Swiss entity. All rights reserved.

The KPMG name and logo are registered trademarks or trademarks of KPMG International.

Liability limited by a scheme approved under Professional Standards Legislation.

April 2020. 319223906DTL