



Facilitator View

Harness insights for powerful decision making



KPMG Facilitator View helps you run meetings, workshops and group conversations effectively, ensuring every voice is heard.

When it comes to making important decisions, leaders need to be able to identify, classify and prioritise issues that are facing the business. Developed by drawing on the strong IP of KPMG professionals and built upon the solid foundations of Microsoft Azure, Facilitator View is an innovative cloud-based solution that helps you harness wisdom from diverse thinking. It gives participants the ability to contribute to the conversation and vote anonymously no matter where they are in the world, capturing insights from all levels of the organisation. With results collated in real-time and displayed through visual heat mapping, Facilitator View stimulates important discussions that help to drive more informed decision making while fostering an environment of greater collaboration.

Benefits



Informed decisions



Anonymous voting



Virtual participation



Real-time results



Intelligent heat-mapping



Exclusive insights

An easy to use technology solution for strategic prioritisation.

Providing the capability to capture insights from people across all levels of the organisation – from the board right through to the management and operational level – Facilitator View promotes inclusivity and efficiency in the decision making process. For example, it can be used to determine which issues are of higher priority. Plotting item against reward, participants have the ability to vote on which issues they believe should be given the most focus. This allows the organisation to determine how best to prioritise issues in the context of these two dimensions, while also supporting collective decision making across the organisation.

How it works

Facilitator View helps enable more inclusive decision making by ensuring that everybody has the opportunity to share their thoughts, rather than having workshops being dominated by the loudest voice. Intuitive and easy-to-use, Facilitator View enhances the decision making process through:

✓ **Anonymous online voting:**

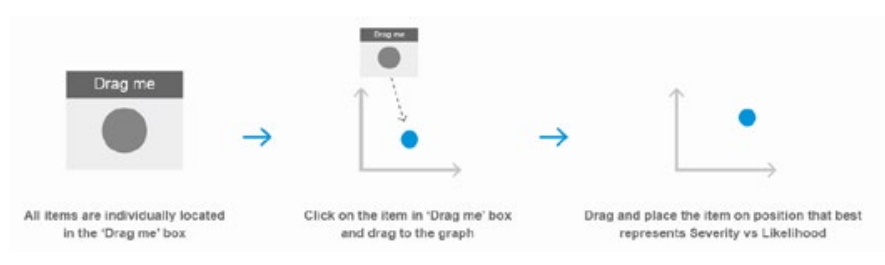
Whether workshop participants are in the same room or in a virtual meeting, Facilitator View ensures that the voice of every participant is counted, and may even allow facilitators to unearth issues that they might not have been aware of previously.

✓ **Visual heat maps:**

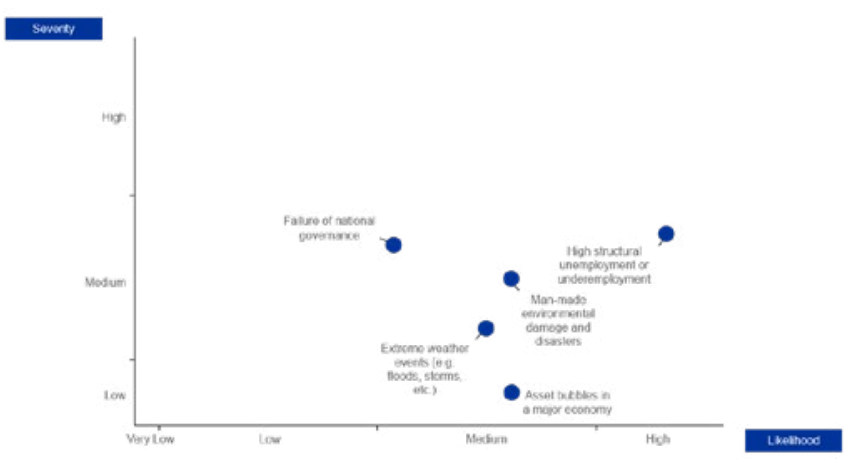
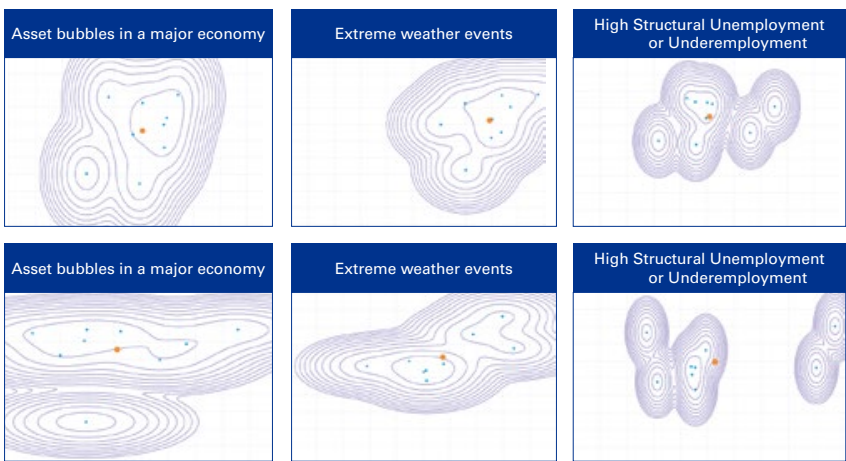
Once voting is complete, Facilitator View generates detailed heat maps that provide a nuanced, aggregated view of how every participant voted on each individual issue, with an in-depth report produced in real-time. Facilitator View provides powerful insights that reflect the perspectives of all participants, helping decision makers to prioritise which topics to focus on.

How Facilitator View works

Simple drag and drop to vote on issues



In-depth insights through visual heat maps



Get in touch

Speak to one of our subject matter experts below to find out more about how KPMG Facilitator View can help your organisation make more informed decisions.

Kevin Smout
Partner
Governance, Risk and Controls Services
ksmout@kpmg.com.au

Dawn Cassin
National Product Consultant
Governance, Risk and Controls Services
dcassin@kpmg.com.au

KPMG.com.au

The information contained in this document is of a general nature and is not intended to address the objectives, financial situation or needs of any particular individual or entity. It is provided for information purposes only and does not constitute, nor should it be regarded in any manner whatsoever, as advice and is not intended to influence a person in making a decision, including, if applicable, in relation to any financial product or an interest in a financial product. Although we endeavour to provide accurate and timely information, there can be no guarantee that such information is accurate as of the date it is received or that it will continue to be accurate in the future. No one should act on such information without appropriate professional advice after a thorough examination of the particular situation.

To the extent permissible by law, KPMG and its associated entities shall not be liable for any errors, omissions, defects or misrepresentations in the information or for any loss or damage suffered by persons who use or rely on such information (including for reasons of negligence, negligent misstatement or otherwise).

©2024 KPMG, an Australian partnership and a member firm of the KPMG global organisation of independent member firms affiliated with KPMG International Limited, a private English company limited by guarantee. All rights reserved.

The KPMG name and logo are trademarks used under license by the independent member firms of the KPMG global organisation.

Liability limited by a scheme approved under Professional Standards Legislation.

February, 2024. 1271058534CON.