



Integrated partner alliance ecosystem

KPMG Connected Enterprise

Effectively identifying, integrating and managing third-parties to increase speed to market, reduce costs, mitigate risks and supplement capability gaps in delivering the customer promise are goals key for the Connected Enterprise.

Building partnerships and alliances can help your company deliver a competitive edge. By finding the right partners and establishing effective communication and data sharing, you'll extend your business's growth into new markets. The success of these partnerships will require a more fluid, flexible model of business for your company, people and systems.

You can create that environment by building networks of partners and alliances, ensuring their systems can talk to each other through application programming interfaces (APIs) and carefully managing how everything works seamlessly together.

Key considerations

- How can you identify partners, alliances and vendors to fill capability gaps?
- Is your approach to shared services cost efficient and consistent?
- Do you have a defined, efficient and risk-reducing onboarding process?
- How can you certify and monitor partners' performance and continued understanding of your mission?

How can KPMG help?

Developing a strategy to build and manage a strategic network of partnerships and alliances

Identifying ideal potential partners to boost your business goals – and building interfaces between multiple systems

Navigating the complex world of data protection, cybersecurity and the small print involved in your transactions with partners and customers

Objectively assessing how effectively your current outsourcing providers are leveraging digital labor solutions and providing valuable insight into future options

Disclaimer: Some or all of the services described herein may not be permissible for KPMG audit clients and their affiliates or related entities.

Fast food leader trims the fat

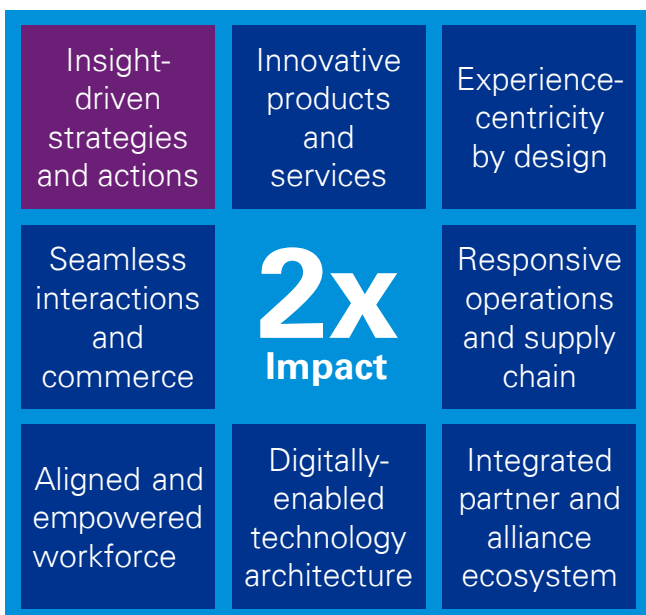
A client was up against it – growing competition, pressures to restructure management, a fragmented, inefficient approach to administrative services, and Wall Street demanding improved shareholder returns.

Management knew what needed to be done. They also knew they needed a team of specialists with the experience, background and know-how to turn their insights into reality. That's when a KPMG member firm was called to help. They provided the strategy, design and assistance with implementation of a Global Business Services transformation based on service centralization, outsourcing and automation. Through this work, the client is now on the road to becoming a stronger, leaner and far more agile player in a highly competitive marketplace.

We are always on your side.

What does a Connected Enterprise look like?

The most successful organizations exhibit eight characteristics that span all aspects of the enterprise. The capabilities of front office, middle office and back office integrate seamlessly to support the brands, products and services, interactions and workforce.



Make the connection

- Generate business value at every stage of your transformation journey
- Build an insights-driven, digital and customer centric business
- Empower and enable your people to align the organization for agility and performance
- Engineer secure architectures to enable agile, high-speed innovation

Disclaimer: Some or all of the services described herein may not be permissible for KPMG audit clients and their affiliates or related entities.



Miriam Hernandez-Kakol

Global Customer & Operations

T: +1 973 912 6227

E: mhernandezkakol@kpmg.com



Stephanie Terrill

National Leader Canada, Management Consulting

T: +1 416 777 8994

E: jsterrill@kpmg.ca



Daniel T. Ornstein

Connected Enterprise Champion Canada, Customer Practice

T: +1 416 777 8294

E: danornstein@kpmg.ca

home.kpmg/ca/connected

The KPMG name and logo are registered trademarks or trademarks of KPMG International. The information contained herein is of a general nature and is not intended to address the circumstances of any particular individual or entity. Although we endeavor to provide accurate and timely information, there can be no guarantee that such information is accurate as of the date it is received or that it will continue to be accurate in the future. No one should act on such information without appropriate professional advice after a thorough examination of the particular situation.

© 2019 KPMG LLP, a Canadian limited liability partnership and a member firm of the KPMG network of independent member firms affiliated with KPMG International Cooperative ("KPMG International"), a Swiss entity. All rights reserved.

Designed by CREATE | CRT112363

Throughout this document, "we", "KPMG", "us" and "our" refer to the network of independent member firms operating under the KPMG name and affiliated with KPMG International or to one or more of these firms or to KPMG International. KPMG International provides no client services. No member firm has any authority to obligate or bind KPMG International or any other member firm vis-à-vis third parties, nor does KPMG International have any such authority to obligate or bind any member firm.