



Sales Information Package

Regarding the Property and Assets
of EMG Experiential Media Group
(Canada) Corp.

June 2020



Contents

Contents.....	2
Disclaimer and Restrictions	4
Sales Process	5
Proposed Transaction.....	5
Further Contacts by Prospective Purchasers.....	6
Overview.....	7
Operations	7
Background.....	7
Bankruptcy Proceedings	7
Assets for Sale.....	8
Exhibitions	8
Warehouse Inventory	8
Head Office	9
Non-physical assets.....	9
Additional information	9
Appendices	10
Appendix A – Dinosaurs Unearthed™ (2,000 sq.ft.)	10
Appendix B - Dinosaurs Unearthed™; Fossil Stories (5,000 sq.ft.)	13
Appendix C - Dinosaurs Unearthed™; New Discoveries (6,000 sq.ft.)	16
Appendix D - Dinosaurs Unearthed™; Extreme Dinosaurs™ (10,000 sq.ft.).....	19
Appendix E – Dinosaurs Unearthed™; Down to the Bone.....	23
Appendix F – Dinosaurs Unearthed™; Predator vs Prey.....	27
Appendix G – Xtreme Bugs™ (indoor).....	30
Appendix H – Xtreme Bugs™ (outdoor).....	33
Appendix I – Dinosaurs Alive!™; Zoo 15	36
Appendix J – Other non-categorized exhibitions Calgary Storage.....	38
Appendix K – Other non-categorized exhibitions Olympia Storage	39



Appendix L – Not Assigned to exhibition Premises Warehouse Storage	41
Appendix M – Not Assigned to exhibition Kansas City Warehouse Storage.....	46
Appendix N – Head Office Assets (on Premises)	47
Appendix O – Head Office Assorted Fossils	52
Appendix P – Non-physical assets	53
Appendix Q – Terms and Conditions of Sale	54
Appendix R – Offer	58



Disclaimer and Restrictions

This Sales Information Package (the “Document”) concerning EMG Experiential Media Group (Canada) Corp. (“EMG” or the “Company”) has been compiled by KPMG Inc. in its capacity as Trustee of the Estate of EMG Experiential Media Group (Canada) Corp., In Bankruptcy (“KPMG Inc.” or the “Trustee”). The Document has been compiled solely for information purposes based on documentation and information obtained by the Trustee from the Company’s records. It is provided solely for use by prospective purchasers in considering their interest in acquiring the right, title, and interest in and to any or all of the property and assets of EMG (the “Assets”).

The information contained herein has been prepared to assist prospective purchasers in making their own evaluation of the Assets and does not purport to contain all of the information that a prospective purchaser may require. Prospective purchasers should conduct their own investigations and analysis of the Assets and of the information contained in the Document.

The Document may include certain statements with respect to the Company’s operating performance and the Assets owned by EMG. No representation is made by the Trustee as to the accuracy of such statements. We specifically note that the Trustee has not independently verified any of the information contained herein.

The Document is for the use of the recipient, in order to provide background information concerning the Assets. It is not, and under no circumstances is, to be construed to be an offering of securities.

The Trustee provides no, and there are no representations, warranties or terms, whether express, implied, statutory or otherwise, with respect to the Assets or as to the accuracy or completeness of the Document. The Trustee shall have no liability for any representations (expressed or implied) contained in, or for any omissions from, the Document or for any other written or oral communications transmitted to prospective purchasers in the course of their evaluation of the Assets.

Additional information, if requested, may be made available to prospective purchasers at the option of the Trustee, and may require execution of a Confidentiality Agreement.

All financial information contained in the Document is stated in Canadian dollars.

© 2020 KPMG Inc. is a subsidiary of KPMG LLP, a Canadian limited liability partnership and a member firm of the KPMG network of independent member firms affiliated with KPMG International Cooperative (“KPMG International”), a Swiss entity.



Sales Process

Proposed Transaction

The Trustee is soliciting offers for the purchase of EMG's right, title and interest in and to any or all of the Assets of EMG.

Upon review of this Document, a prospective purchaser wishing to acquire certain or all of the Assets is invited to submit an Offer in writing (via email) to KPMG Inc.

An Offer should be executed by an authorized officer of the prospective purchaser and received by KPMG Inc., Trustee of the Estate of EMG Experiential Media Group (Canada) Corp. In Bankruptcy, phil.mitchell@kpmg.ca no later than 12:00 p.m. Pacific Standard Time, Monday, June 22, 2020. The Offer must be submitted in the form provided under Appendix R – Offer.

The Trustee reserves the right to:

- Amend or terminate the sale procedures at any time during the sale process, without assigning any reasons therefore;
- Negotiate with one or more prospective purchasers, at any time, prior to acceptance of any Offer;
- Enter into a definitive agreement for the purchase and sale of some, or all, of the assets without prior notice to other prospective purchasers at any time;
- Exclude any assets listed herein without notification to prospective purchasers;
- Reject any or all Offers; and
- Amend any information which has been made available to prospective purchasers at any time and from time-to-time.

Prospective purchasers should note that the highest or any Offer may not necessarily be accepted.

The Assets are being sold on an “as is, where is” basis, with no representations, express or implied, regarding title, merchantability or fitness for use, or otherwise.

The Offer for any or all of the assets shall be subject to the approval of the Inspectors of the Estate of EMG and, at the sole discretion of KPMG Inc., may also require the approval of the Supreme Court of British Columbia.



Further Contacts by Prospective Purchasers

Under no circumstances shall interested parties or prospective purchasers contact any management, employees, customers, agents and/or suppliers of EMG without the prior consent of KPMG Inc.

All contacts by a prospective purchaser are to be made directly with the following representatives of KPMG Inc.:

Phil Mitchell
Senior Consultant
Tel: (250) 244-3348
E-mail: philmitchell@kpmg.ca

Jennifer Kwok
Senior Manager
Tel: (604) 691-3260
E-mail: jgkwok@kpmg.ca

Prospective purchasers are directed to the Terms and Conditions in Appendix Q – Terms and Conditions of Sale for instructions on submission of an offer.

No finder's fee, commission expenses or other compensation will be paid by KPMG Inc. to brokers, agents, consultants, advisors or other intermediaries of any prospective purchaser unless agreed to in writing by the Trustee.



Overview

Operations

EMG designed and created world-class touring exhibitions (including, Dinosaurs Unearthed™, Dinosaurs Alive!™, Extreme Dinosaurs™, Xtreme BUGS!™) that provided experiences (indoor, outdoor and media landscape) that ranged in size and scale in more than 100 cities globally. The turnkey exhibitions were leased to Museums, Zoos and other tourist attractions, typically on a six month lease term.

The Company's operations were conducted from a leased premises, located at #110-11188 Featherstone Way, Richmond, British Columbia (the "Premises").

Background

The Company was incorporated in the province of British Columbia on January 16, 2019 as a vehicle to acquire the assets and assume the employees of Dinoking Tech Inc. ('Dinoking'), which had previously operated the animatronics business since its inception in 2007.

Dinoking had merged with Premier Exhibitions Inc. in 2015, a US business that operated with similar customers to Dinoking but with a focus on historical artifact exhibitions using authentic objects and artifacts. Premier Exhibitions Inc. filed a petition for reorganization relief under Chapter 11 of the United States Bankruptcy Code in June, 2016 following a deterioration of its financial position. Although, Dinoking's financial position was unaffected, Management indicate its association with Premier Exhibitions Inc. damaged its goodwill with Dinoking/EMG's customer base and that the sales of the Company struggled to recover.

The Company's Management attributes the Company's insolvency and resultant bankruptcy filing to insufficient working capital and lack of external sources of funding to maintain operations.

Bankruptcy Proceedings

In light of the foregoing, EMG filed a voluntary assignment in bankruptcy on May 5, 2020 and KPMG Inc. was appointed as the Trustee (the "Trustee") of the Estate.



Assets for Sale

The assets included for sale in this information package have been classified as follows.

Exhibitions

Exhibitions comprise nine different exhibitions located in storage containers at various locations across Canada and the USA. Each Exhibition contains main animatronics, décor features, fossils & skeletons, interactives, production assets/misc. and storage containers.

Dinosaurs Unearthed™ (2,000 sq.ft.)	Refer to Appendix A
Dinosaurs Unearthed™; Fossil Stories (5,000 sq.ft.)	Refer to Appendix B
Dinosaurs Unearthed™; New Discoveries (6,000 sq.ft.)	Refer to Appendix C
Dinosaurs Unearthed™; Extreme Dinosaurs™ (10,000 sq.ft.)	Refer to Appendix D
Dinosaurs Unearthed™; Down to the Bone	Refer to Appendix E
Dinosaurs Unearthed™; Predator vs Prey	Refer to Appendix F
Xtreme Bugs™ (indoor)	Refer to Appendix G
Xtreme Bugs™ (outdoor)	Refer to Appendix H
Dinosaurs Alive!™; Zoo 15	Refer to Appendix I
Other non-categorized exhibitions - Calgary	Refer to Appendix J
Other non-categorized exhibitions - Olympia	Refer to Appendix K

Warehouse Inventory

Warehouse Inventory comprises assets Not Assigned to Exhibition located in various storage locations, exhibition related assets located at the Premises warehouse and warehouse travelling animatronics.

Not Assigned to exhibition Premises Warehouse Storage	Refer to Appendix L
Not Assigned to exhibition Kansas City Warehouse Storage	Refer to Appendix M



Head Office

Head Office Assets comprise: two forklifts, warehouse and material handling equipment; repair and maintenance tools and supplies; warehouse racking and shelving; spare exhibition assets (not included in the Warehouse Inventory listings); office furnishings and seating; and computer and office equipment.

Head Offices Assets

[Refer to Appendix N](#)

Head Office Fossil collection

[Refer to Appendix O](#)

Non-physical assets

Non-physical assets comprise: commissioned digital illustrations of dinosaurs, bugs and sea creatures as well as the Trademarks associated with the Company's exhibitions.

Non-physical assets

[Refer to Appendix P](#)

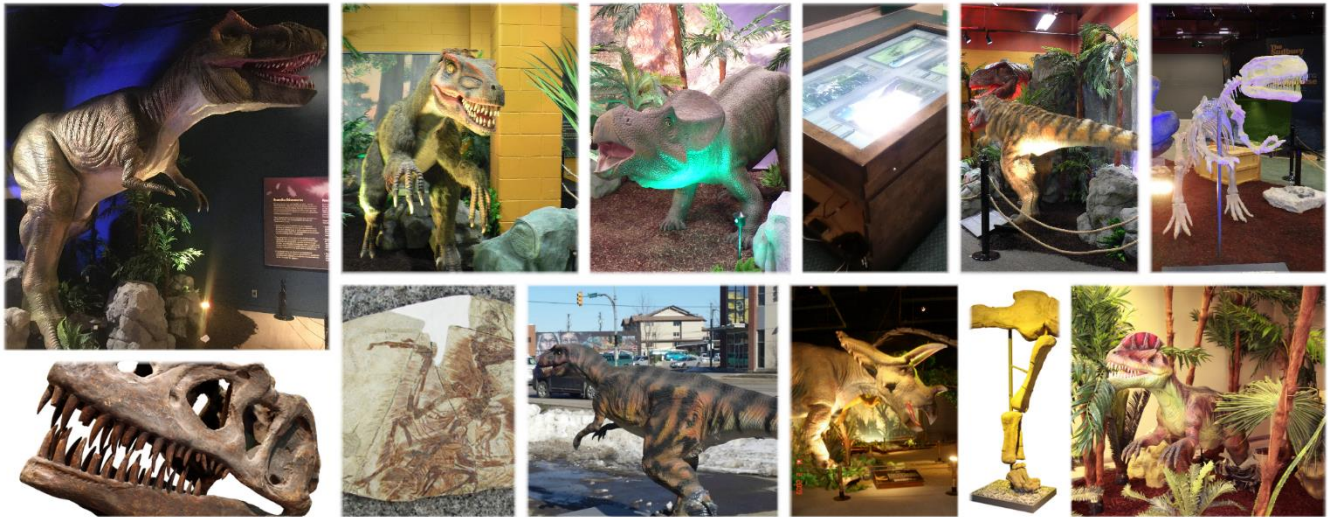
Additional information

Additional information is available to interest parties via access to an online data room. Please contact Phil Mitchell (philmitchell@kpmg.ca) for access. The data room contains photos of many of the items in the containers, packing schematics for the containers and a detailed inventory list including the number of animatronic movements per dinosaur and typical rental values etc.

Appendices

Appendix A – Dinosaurs Unearthed™ (2,000 sq.ft.)

Summary



Selection of exhibits contained in the exhibition

“Surround your guests with the breathtaking sights and sounds of the Mesozoic Era, as they get up close and personal with some of the most formidable predators and prey to ever walk the earth. Dinosaurs Unearthed is an immersive adventure featuring life-size animatronic dinosaurs, carefully reproduced skeletons, hands-on fossil digs and digital interactive activities. Each riveting scene features real discoveries from China and North America, informed by the latest scientific research. Available themes include Dinosaur Introductions, Fossil Stories and New Discoveries.” (EMG sales material)

A big exhibition with a small footprint. Using animatronics and fossils, this exhibition features feathered dinosaurs and the comparison of a few iconic North American species to Asian species. Designed for venues with to-the-grid heights of a minimum of 11 feet, the 2,000 sq. ft. exhibition showcases the size of dinosaurs with the use of curated fossil replicas. The exhibition items feature several real fossils including an *Oviraptor* egg.

The exhibition was created in 2012 and was recently refurbished to include a French/English graphics package travelling with the exhibition. Due to their size the sub-adult *Tyrannosaurus rex* and an adult-sized *Triceratops*, currently packaged with the exhibition, are meant for outdoor display.



Location

The exhibition is stored in three storage containers currently located in Sainte-Catherine, QC, Canada.

Inventory

Category	Qty.
Main Animatronics	
2009 Deinonychus-Feathered	1
2008 Protoceratops	1
2007 Triceratops - Temp Assignment	1
2010 Tyrannosaurus Rex - Temp Assignment	1
2008 Tyrannosaurus Rex Head	1
2009 Tyrannosaurus Rex Juvenile-Feathered	1
2015 Dilophasaurus - Travelling-Temp Assignment	1
2009 Yangchuanosaurus	1
Décor features	
Exhibition wall	18
Reading rails	10
Stanchions with ropes	24
Fossil case a	3
Fossil case b	1
Fossil case d	1
Fossil case e	4
Tyrannosaurus rex head wall panels	5
Fossils and skeleton (mostly 2007-2012)	
Allosaurus skull	1
Fern and tree fossils (authentic)	1
Hadrosaurus skull	1
Mamenchisaurus forelimb bone	1
Placoolithus cf. taohensis eggs	1
Plateosaurus claws	1
Protopsephurus	1
Shunosaurus phalanges	1
Spinosaurus teeth (authentic)	1
Supersaurus scapula	1
Triceratops horns	1
Yangchuanosaurus skull	1
Sinosauropteryx	1
3 coprolite (2 authentic)	3
Longipteryx	1
Mosasaur teeth (authentic)	2
Spinosaurus teeth (authentic)	2
Oviraptor egg (authentic)	1
Gasosaurus skelton	1
Interactives	



Dig pit (dynamic earth) footprint	1
2017 multi-touch table 2000	1
Touch me fossil coprolite	1
Touch me fossil t. rex tooth	1
Touch me fossil oviraptor egg	1
Hologram dinosaur hatching	1

Production assets/misc.

Graphics package	1
Lighting package including 16 led 2000 lights and 2 led 2000 ground lights	1
Production transfer cart	4
Stackable storage bin	6
4-wheel dolly	5
Tool cabinet	4
Fork extensions	2
Various equipment cases and crates -- valued with contents	1
Large dinosaur rigging kit	1
Pallet jack (in photo but not on listing)	1
Assorted replacement parts	1

Storage Containers

40 ft. standard container -- OOLU7047440	1
40 ft. standard container -- CBHU1617128	1
40 ft. high cube container -- WJSU5015786	1

Appendix B - Dinosaurs Unearthed™; Fossil Stories (5,000 sq.ft.)

Summary



Selection of exhibits contained in the exhibition

“Surround your guests with the breathtaking sights and sounds of the Mesozoic Era, as they get up close and personal with some of the most formidable predators and prey to ever walk the earth. Dinosaurs Unearthed is an immersive adventure featuring life-size animatronic dinosaurs, carefully reproduced skeletons, hands-on fossil digs and digital interactive activities. Each riveting scene features real discoveries from China and North America, informed by the latest scientific research. Available themes include Dinosaur Introductions, Fossil Stories and New Discoveries.” (EMG sales material)

The concept of the exhibition package showcases discoveries – the fossil stories – from both North America and Asia. Individual groupings include the *Allosaurus* predator trap from the Cleveland Lloyd Quarry, the *Velociraptor* and *Protoceratops* death battle, the recent discovery in Henan Province of one of the largest early Cretaceous sauropods, and the discovery of the richest mid-to late Jurassic fossils at Dashanpu Quarry. The comparison of physical differences between both *Tyrannosaurus rex* and *Triceratops* adults and juveniles is also highlighted.

Created in 2012, this exhibition requires a to-the-grid minimum height of 12 feet in order to accommodate the indoor animatronics. The adult *Tyrannosaurus rex* animatronic is designed to be displayed outdoors. This turnkey exhibition travels with several real fossils and an English language graphics package.

Location

The exhibition is stored in five storage containers which are currently located in Laveen, AZ, US.



Inventory

Category	Qty.
Main animatronics	
2011 Ruyangosaurus Giganteous Juvenile	1
2010 Microraptor	1
2007 Protoceratops	1
2005 Triceratops	1
2011 Tyrannosaurus Rex Head + Wall	1
2008 Tyrannosaurus Rex Juvenile-Feathered	1
2009 Yangchuanosaurus	1
2012 Allosaurus	1
2012 Allosaurus Tail And Leg In Mud	1
2012 Allosaurus Leg In Mud	1
2012 Stegosaurus Juvenile	1
2012 Triceratops Juvenile	1
2012 Tyrannosaurus Rex	1
2012 Velociraptor	1
Décor features	
Exhibition wall	40
Stanchions with ropes	70
Fossil case a	3
Fossil case b	2
Fossil case c	2
Fossil case d	2
Fossil case e	4
Reading rails	28
Tyrannosaurus rex head wall panels	5
Set of foliage	2
Fossils and skeleton (mostly 2007-2012)	
Agilisaurus	1
Allosaurus skull	1
Carnosaur footprint	1
Coporlite (authentic)	2
Huayangosaurus parascapular spine	1
Mamenchisaurus femur	1
Mamenchisaurus forelimb bone	1
Mosasaur teeth (authentic)	3
Omeisaurus bony tail club	1
Oviraptor egg	1
Huanghetitan caudal vertebrae 2+3	1
Ruyangosaurus hindfoot	1
Sauropod claw	1
Shunosaurus bony tail club	1
Spinosaurus teeth (authentic)	2
Triceratops horns	2



Yandusaurus multidens hind foot	2
Yangchuanosaurus skull	1
Placoolithus eggs	1
Microraptor skeleton	1
Gasosaurus skeleton	1
Huayangosaurus skeleton	1

Interactives

Skin, bones and digestion interactive	1
Dig pit (bishop) fossil	1
Interactive console-protoceratops (valued with animatronic)	1
Interactive console-yangchuanosaurus (valued with animatronic)	1
Dinosaur detective	1
2016 multi-touch table 5000	1
2016 weigh scale	1

Production assets/misc.

Graphics package	1
Lighting package (count not provided but valued from review of other exhibition inventory)	1
Production transfer cart	10
Stackable storage bin	20
4-wheel dolly	1
Tool cabinet	5
Bin of safety equipment	1
Fork extensions	2
Various equipment cases and crates -- valued with contents	1
Brooms and misc. tools	1
Pallet jack	1
Various 4-wheel dollies (in photos but count not provided)	1
Shorty lms-ebt-46-4 telescopic jib boom crane attachment	1
Assorted replacement parts	1

Storage Containers

40 ft. standard container -- PONU7711264	1
40 ft. standard container -- FSCU4000013	1
40 ft. high cube container -- CAXU9728372	1
40 ft. high cube container -- SCZU5665042	1
40 ft. high cube container -- CAXU9151969	1

Appendix C - Dinosaurs Unearthed™; New Discoveries (6,000 sq.ft.)

Summary



Selection of exhibits contained in the exhibition

“Surround your guests with the breathtaking sights and sounds of the Mesozoic Era, as they get up close and personal with some of the most formidable predators and prey to ever walk the earth. Dinosaurs Unearthed is an immersive adventure featuring life-size animatronic dinosaurs, carefully reproduced skeletons, hands-on fossil digs and digital interactive activities. Each riveting scene features real discoveries from China and North America, informed by the latest scientific research. Available themes include Dinosaur Introductions, Fossil Stories and New Discoveries.” (EMG sales material)

The exhibition package features iconic dinosaurs from the Jurassic and Cretaceous periods from both North America and Asia. The exhibition items also feature feathered dinosaurs including Gigantoraptor, Microraptor, Velociraptor, Sinosauropteryx, and a feathered juvenile Tyrannosaurus rex. Included in the exhibition items package are life-sized skeletons of Omeisaurus, Yangchuanosaurus and Tuojiangosaurus. The Yangchuanosaurus and Tuojiangosaurus were generally grouped with the animatronic Allosaurus and Stegosaurus to show the differences and similarities to their North American “cousins”.

Designed in, this exhibition required a to-the-grid minimum of 15 feet in order to accommodate the indoor animatronics and skeletons. A life-sized Apatosaurus was used as an outdoor promotional item. This turnkey exhibition travels with three replica feathered fossils including a life-sized Microraptor. These replicas were produced by IVPP from moulds of the original fossils. There are also several real fossils included in the package.

Location

The exhibition is stored in seven storage containers which are currently located in Chicago, IL, US.



Inventory

Category	Qty.
Main animatronics	
2010 Allosaurus	1
2010 Apatosaurus	1
2010 Confuciusornis	1
2010 Dilophosaurus	1
2010 Gigantoraptor	1
2010 Microraptor	1
2010 Protoceratops	1
2010 Sinosauropteryx	1
2010 Stegosaurus	1
2008 Triceratops	1
2010 Tyrannosaurus Rex	1
2010 Tyrannosaurus Rex Juvenile-Feathered	1
2010 Velociraptor-Feathered	1
2010 Yangchuanosaurus	1
2016 Pinacosaurus - Temp Assignment	1
2017 Tylosaurus - Temp Assignment	1
Décor features	
Exhibition wall	36
Stanchions with ropes	79
Fossil case a	3
Fossil case b	5
Fossil case c	3
Fossil case d	2
Fossil case e	5
Reading rails	25
Large rock	10
Medium rock	36
Small rock	10
Rubber sand package	1
Set of foliage	1
Fossils and skeleton (mostly 2009-2012)	
Allosaurus skull	1
Carnosaur footprint	1
Coprolite (authentic)	2
Excavation site	1
Hadrosaurus skull	1
Huayangosaurus parascapular spine	1
Longipteryx	1
Mamenchisaurus femur	1
Mamenchisaurus forelimb bone	1
Microraptor	1
Mosasaur teeth (authentic)	3



Omeisaurus bony tail club	1
Omeisaurus cervical vertebra	1
Oviraptor egg (authentic)	1
Placoolithus cf. taohensis eggs	1
Sauropod claw	1
Shunosaurus bony tail club	1
Shunosaurus phalanges	1
Supersaurus scapula	1
Triceratops horns	1
Yandusaurus multidens hind foot	1
Yangchuanosaurus skull	1
Yanornis	1
Spinosaurus teeth (authentic)	1
Omeisaurus skeleton	1
Tuojiangosaurus skeleton	1
Yangchuanosaurus skeleton	1

Interactives

Skin, bones and digestion interactive	1
Dig pit (bishop) fossil	1
Interactive console-stegosaurus (valued with animatronic)	1
Dinosaur detective	1

Production assets/misc.

Graphics package	1
Lighting package including 22 led 45 degree ground lights, 35 led 60 degree ground lights, 2 led outside ground lights and 3 led wall wash sets	1
Static sea creature set	1
Production transfer cart	8
Stackable storage bin	33
Tool cabinet	6
Safety equipment, load straps, extension cords, tarps and tools (in various bins)	1
Fork extensions	2
Various equipment cases and crates -- valued with contents	1
Various 4-wheel dollies (in photos but count not provided)	1
Shorty lms-ebt-46-4 telescopic jib boom crane attachment	1
Assorted replacement parts	1

Storage Containers

40 ft. high cube container -- MOGU0074136	1
40 ft. high cube container -- OOLU5798457	1
40 ft. high cube container -- DKTI6111220	1
40 ft. high cube container -- DKTI6127015	1
40 ft. high cube container -- DKTI6079370	1
40 ft. high cube container -- DKTI6121716	1
40 ft. high cube container -- TGHU7328745	1

Appendix D - Dinosaurs Unearthed™; Extreme Dinosaurs™ (10,000 sq.ft.)

Summary



Selection of exhibits contained in the exhibition

“An awe-inspiring look at some of the biggest, strangest creatures to ever walk the Earth. Your guests will be surrounded by more than 20 life-size, moving, roaring dinosaurs. The exhibition is complete with animatronics, fossils, reconstructed skeletons and family friendly interactive displays.” (EMG sales material)

Originally created in partnership with Science World in Vancouver, BC in 2011, this exhibition features dinosaurs from the Jurassic and Cretaceous periods. The concept highlighted that extreme physical features, horns, crests, spikes, feather and frills, were required for “staying safe”, “keeping warm”, “getting food” and “having babies” – all the requirements for survival of the species.

Currently travelling with the exhibition items are an additional grouping of Albertosaurus in a scene known as “Did Theropods Have a Social Network”. Not part of the original Extreme Dinosaurs concept, this group of a juvenile, subadult and adult Albertosaurus is based on research from an excavation site in Alberta at Dry Island. Due to the height and size of the animatronic items a to-the-grid minimum height of 22 feet is required for this exhibition to be held indoors.

Location

The exhibition is stored in eight storage containers which are currently located in Sainte-Catherine, QC, Canada.



Inventory

Category	Qty.
Main animatronics	
2011 Alxasaurus	1
2011 Amargasaurus	1
2011 Carnotaurus	1
2011 Confuciusornis	1
2011 Dilophosaurus	1
2011 Dyoplosaurus	1
2011 Gigantoraptor	1
2011 Kosmocerotops	1
2011 Microraptor	1
2011 Olorotitan	1
2011 Omeisaurus	1
2011 Pachycephalosaurus	1
2011 Parasaurolophus	1
2011 Sinosauroptryx	1
2011 Stegosaurus	1
2008 Stegosaurus Mini	1
2011 Styracosaurus	1
2011 Triceratops	1
2011 Tuojiangosaurus	1
2011 Tyrannosaurus Rex	1
2011 Tyrannosaurus Rex Juvenile-Feathered	1
2011 Velociraptor-Feathered	1
2011 Spinosaurus Juvenile	1
2015 Albertosaurus - Temp Assignment	1
2015 Albertosaurus - Temp Assignment	1
2015 Albertosaurus - Temp Assignment	1
Décor features	
Exhibition wall	34
Fossil case a	5
Fossil case b	1
Fossil case c	2
Fossil case d	1
Fossil case e	4
Reading rails	30
Stanchions with ropes	120
Large rock	20
Medium rock	15
Small rock	20
Tyrannosaurus rex photo op	1
Speaker rock	23
Fossils and skeleton (mostly 2009-2012)	
Agilisaurus	1



Caudipteryx	1
Confuciusornis	1
Hadrosaur egg (authentic)	1
Huayangosaurus parascapular spine	1
Mamenchisaurus femur	1
Microraptor	1
Omeisaurus bony tail club	1
Oviraptor egg (authentic)	1
Huanghetitan caudal vertebrae 4 + 5	1
Sauropod claw	1
Shunosaurus bony tail club	1
Spinosaurus teeth (authentic)	1
Triceratops horns	1
Coprolite (authentic)	1
Spinosaurus teeth	1
Mosasaur teeth (authentic)	1
Omeisaurus skeleton	1
Yangchuanosaurus skeleton	1
Pachyrhinosaurus skeleton	1

Interactives

Skin, bones and digestion interactive	1
Dig pit (chicago) fossil	2
Interactive console-dilophosaurus (valued with animatronic)	1
Interactive console-parasaurolaphus (valued with animatronic)	1
Interactive console-stegosaurus (valued with animatronic)	1
Interactive console-styracosaurus (valued with animatronic)	1
Dinosaur detective	1

Production assets/misc.

Graphics package	1
Lighting package including 36 led 45 degree ground lights, 28 led 60 degree ground lights, 33 led 25 degree ground lights, 80 led ground lights, led light set and 7 led wall wash sets	1
Static hadrosaur	1
Speaker	16
Production transfer cart	3
Stackable storage bin	12
Tool cabinet	7
Safety equipment, load straps, extension cords, tarps and tools (in various bins)	1
Various equipment cases and crates -- valued with contents	1
Assorted shovels and brooms	1
Assorted replacement parts	1

Storage Containers

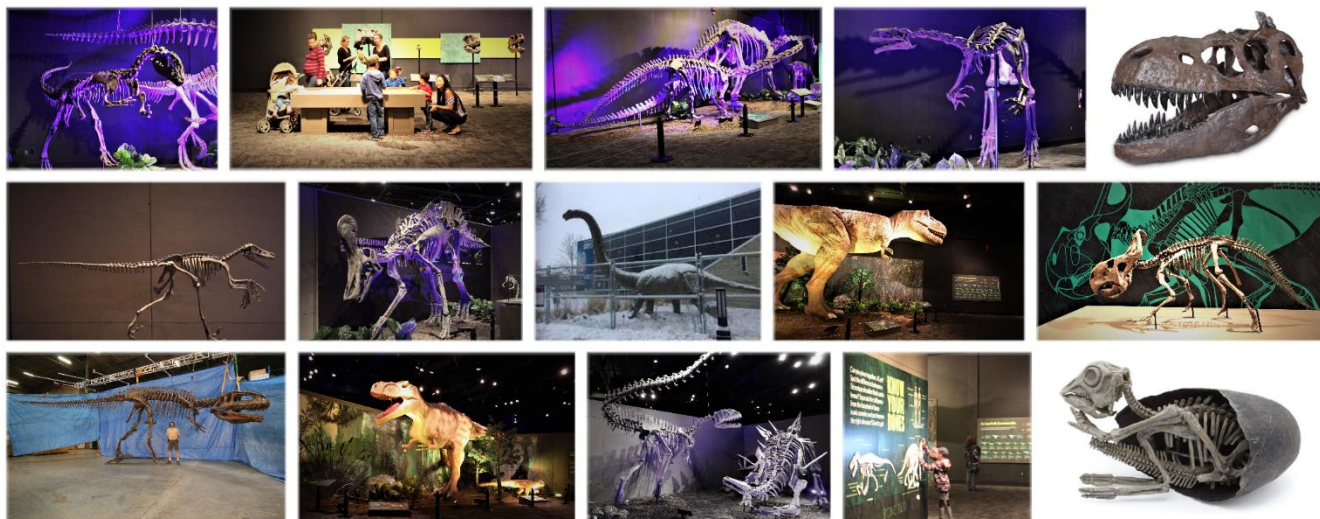
40 ft. high cube container -- MOTU0405575	1
40 ft. high cube container -- MOTU6409536	1
40 ft. high cube container -- MOTU0405770	1
40 ft. high cube container -- MOTU0493112	1
40 ft. high cube container -- MOTU0506354	1



40 ft. high cube container -- MOTU6421573	1
40 ft. high cube container -- MOTU0513630	1
40 ft. high cube container -- YMLU8415202 (Rental Unit/not owned by the Company)	1

Appendix E – Dinosaurs Unearthed™; Down to the Bone

Summary



Selection of exhibits contained in the exhibition

“Get ready to come face to teeth (and feathers) with some of the most iconic species of all time. Prepare to meet some fascinating, newly discovered killers. Featuring an impressive array of eight life-size animatronic dinosaurs and up to 14 life-size skeletons. The exhibition will introduce intrigue and delight” (EMG sales material)

Launched in June 2018, this exhibition has appeared on one occasion and is in excellent condition. The concept highlights a number of topics that may, or may not be, known to the general public. Broad topics include body plans, tyrannosaurs and whether tyrannosaurs were an invasive species to North America, dromaeosaurids and their diversity, hadrosaurs and how new information discovered creates radical changes to the perception of physical appearance and trace fossils. The exhibition items feature fossils, skeletons, models and animatronics in order to illustrate points in the content.

The roughly 6,000-8,000 sq. ft footprint required a to-the-grid minimum of 16 feet. The exhibition items include a number of real fossils, casts from Black Hills Institute, one real skeleton of a Psittacosaurus and an outdoor promotional animatronic Omeisaurus.

Location

The exhibition is stored in seven storage containers, five of which are currently located in Edmonton, AB, Canada and the remaining two are located in Burnaby, BC, Canada.



Inventory

Category	Qty.
Main animatronics	
2009 Parasaurolophus	1
2016 Regaliceratops	1
2016 Dakotaraptor	1
2016 Qianzhousaurus	1
2016 Tyrannosaurus Rex	1
2018 Tyrannosaurus Rex Juvenile-Feathered	1
2018 Microraptor	1
2018 Dilong	1
Décor features	
Exhibition wall	65
Fossil case a	5
Fossil case b	6
Fossil case c	1
Fossil case d	1
Fossil case e	5
Reading rails	30
Stanchions with ropes	100
Foliage set	1
Mulch set	1
Section header stand	5
Floor mount graphics stand	22
Fossils and skeleton (mostly 2018)	
Xixia egg nest	1
Yangchuanosaurus skull	1
Microraptor	1
Theropod egg clutch (authentic)	1
Mosasaur teeth (authentic)	1
Tyrannosaurus rex skull	1
Allosaurus skull	1
Deinonychus skull	1
Velociraptor skull	1
Therizinosaur embryo/egg sculpture	1
Maiasaura hatchling skeleton/egg	1
Albertosaurus skull	1
Troodon egg nest (authentic- documentation on file)	1
Yanornis	1
Gorgosaurus braincase	1
Gorgosaurus left scapula with pathology	1
Gorgosaurus caudal vertebra with pathology	1
Tyrannosaurus rex forelimb robust	1
Tyrannosaurus rex tooth large	1
Tyrannosaurus rex tooth medium	1



Tyrannosaurus rex right dentary	1
Tyrannosaurus rex claw	1
Albertosaurus tooth (authentic)	1
Tsintaosaurus skull	1
Yunnanosaurus footbones (authentic)	1
Omeisaurus skeleton	1
Mamenchisaurus skeleton	1
Yangchuanosaurus skeleton	1
Tuojiangosaurus skeleton	1
Dilophosaurus skeleton	1
Velociraptor skeleton	1
Protoceratops skeleton	1
Tsintaosaurus skeleton	1
Psittacosaurus skeleton	3
Plateosaurus skeleton	1
Stegoceras skeleton	1
Bactrosaurus skeleton	1
Microraptor skeleton	1
Interactives	
Dig table dinosaur	2
Multi-touch table dttb	1
Skeleton magnet wall	1
Weigh scale	1
Touch me fossil hadrosaur skin	1
Touch me fossil egg nest	1
Touch me fossil coprolite	1
Touch me fossil t. rex tooth	1
Production assets/misc.	
Graphics package	1
Lighting package including 65 led 60 degree ground lights and 10 led wall wash sets	1
Production cart	6
Static microrapter	1
Production transfer cart	7
Stackable storage bin	20
Tool cabinet	5
Safety equipment, load straps, extension cords, tarps and tools (in various bins)	1
Fork extensions	2
Various equipment cases and crates -- valued with contents	1
Various 4-wheel dollies (in photos but count not provided)	1
Telescopic jib boom crane attachment	1
Assorted replacement parts	1
Storage Containers	
40 ft. standard container -- HJCU7468845	1
40 ft. high cube container -- PCIU8129822	1
40 ft. standard container -- INBU4800084	1
40 ft. high cube container -- CBHU8132258	1



40 ft. high cube container -- CBHU8439809	1
40 ft. high cube container -- CBHU8424476	1
40 ft. high cube container -- CBHU8319594	1

Appendix F – Dinosaurs Unearthed™; Predator vs Prey

Summary



Selection of exhibits contained in the exhibition

“How do paleontologists know which dinosaurs were involved in predation? They look at the fossil record. Puncture wounds, bite marks and scrapes show evidence of battle. These stories are highlighted with Predator vs Prey using 15 animatronic dinosaurs and 5 life-size skeletons.” (EMG sales material)

The concept was first created in 2017 and built around the fossil evidence of which dinosaur would have battled with another. The exhibition highlights physical features or characteristics discovered in the fossil evidence, including injuries, which would indicate the success or failure in predation. The exhibition items list includes several feathered dinosaurs and a number of real fossils. The original exhibition included animatronics of a sub-adult Tyrannosaurus rex and adult Triceratops, plus skeletons of two Mamenchisaurus, Yangchuanosaurus, Monolophosaurus and Toujiangosaurus. The original footprint would have been approximately 7,000-9,000 sq. ft.

With the exception of the animatronics and skeletons called out in the previous paragraph, the remaining exhibition items were previously combined with the Zoo 15 set in 2019 to create a much larger 20,000 sq. ft. indoor exhibition.

Location

The exhibition is stored in six storage containers, three of which are currently located in Doraville, GA, US and the remaining three are located in Burnaby, BC, Canada.



Inventory

Category	Qty.
Main animatronics	
2007 Allosaurus	1
2009 Alxasaurus	1
2009 Confuciusornis	1
2009 Gigantoraptor	1
2009 Microraptor	1
2007 Protoceratops	1
2009 Sinosauropteryx	1
2007 Stegosaurus	1
2007 Stegosaurus Juvenile	1
2009 Tyrannosaurus Rex Head + Wall	1
2011 Tyrannosaurus Rex Juvenile-Feathered	1
2009 Velociraptor-Feathered	1
2009 Yangchuanosaurus	1
2013 Tyrannosaurus Rex (My-1z)	1
T.Rex Head (My-3A)	1
Décor features	
Reading rails	51
Stanchions (140 ropes listed only)	1
Cycad double tree	12
Rocks 2	102
Rocks 3	74
Palm tree	7
Palm tree spikey	1
Rubber sand package	1
Foliage set	1
Mulch set	1
Tyrannosaurus rex photo op	1
Tree succulent (drst-1)	4
Tree succulent (drst-1a)	5
Tree succulent (drst-1c)	3
Tree bendy (drst-2)	9
Tree cycad (drst-3)	4
Display Glass Triceratops Horns	1
Interactives (2017/2018)	
Weigh scale	1
Dig pit (witte) footprint	1
Touch me fossil coprolite	1
Touch me fossil t. rex tooth	1
Touch me fossil velociraptor claw	1
Touch me fossil monolophosaurus manus	1
Touch me fossil stegosaurus thagomizer	1
Touch me fossil mamenchisaurus bony tail club	1



Dig table dinosaur	1
Production assets/misc.	
Graphics package	1
Lighting package including 28 wall wash sets and 1 light set	1
Production transfer cart	2
Stackable storage bin	31
Various equipment cases and crates -- valued with contents	1
Various 4-wheel dollies (in photos but count not provided)	1
Assorted folding tables and chairs	1
Assorted replacement parts	1
Storage Containers	
40 ft. high cube container -- TCNU9057701	1
40 ft. high cube container -- GESU5230654	1
40 ft. high cube container -- HJCU1666587	1
40 ft. high cube container -- CCLU6578662	1
40 ft. high cube container -- FSCU6642500	1
40 ft. high cube container -- BMSU4960222	1

Appendix G – Xtreme Bugs™ (indoor)

Summary



Selection of exhibits contained in the exhibition

“Xtreme bugs is a fantastic indoor adventure where your guests are ‘shrunk’ down to insect size. Through (much) larger-than-life animatronic insects- and up to 60 amazing static insects- we bring the world of bugs to life. As your guests take in our vivid scenic displays and interactive exhibits, they’ll get a new appreciation for all things buggy.” (EMG sales material)

Launched in 2018, the exhibition contains all new animatronics scaled to a smaller venue, static “bugs”, décor, and content. This exhibition followed on the original concept created in partnership with the Brookfield Zoo which told the stories of the “xtreme” physical and behavioral characteristics of “bugs”. Additional content in the form of large format graphics highlight fascinating facts about arthropods.

The exhibition was originally designed to be installed in a 5,000 sq. ft. exhibition space in a heritage building. The minimum to-the-grid height is 11 feet.

Location

The exhibition is stored in five storage containers located in Swedeshoko, NJ, US.



Inventory

Category	Qty.
Main animatronics (all 2018)	
Honey Bee	1
Cicada	1
Scorpion And Dorylus Ant	1
Ant Atta	1
Ant Dorylus	1
Assassin Bug	1
Butterfly-Monarch	1
Centipede	1
Giant Madagascar	1
Ladybug	1
Orb Weaving Spider	1
Orchid Mantis	1
Stink Bug	1
Vinegaroon	1
Firefly	1
Bumblebee	1
Bed Bug	1
Décor Features	
Reading rails with graphic content mount	15
Exhibition walls	45
Foliage set	1
Mulch set	1
Various small décor items	10
Stanchions with rope	90
Static insects (mostly 2018)	
Ant atta	13
Ant dorylus	8
Ant large	3
Butterfly - karner blue	1
Butterfly - spicebush swallowtail	1
Cicada	15
Honey bee	8
Ladybug	8
Orb weaving spider	1
Bed bug flat	4
Bed bug full	4
Butterfly - painted lady	1
Interactives (2014)	
Dig table insects	1
Bug magnet wall	1
Bug magnets	1
Multi-touch table xb	1

**Production assets/misc.**

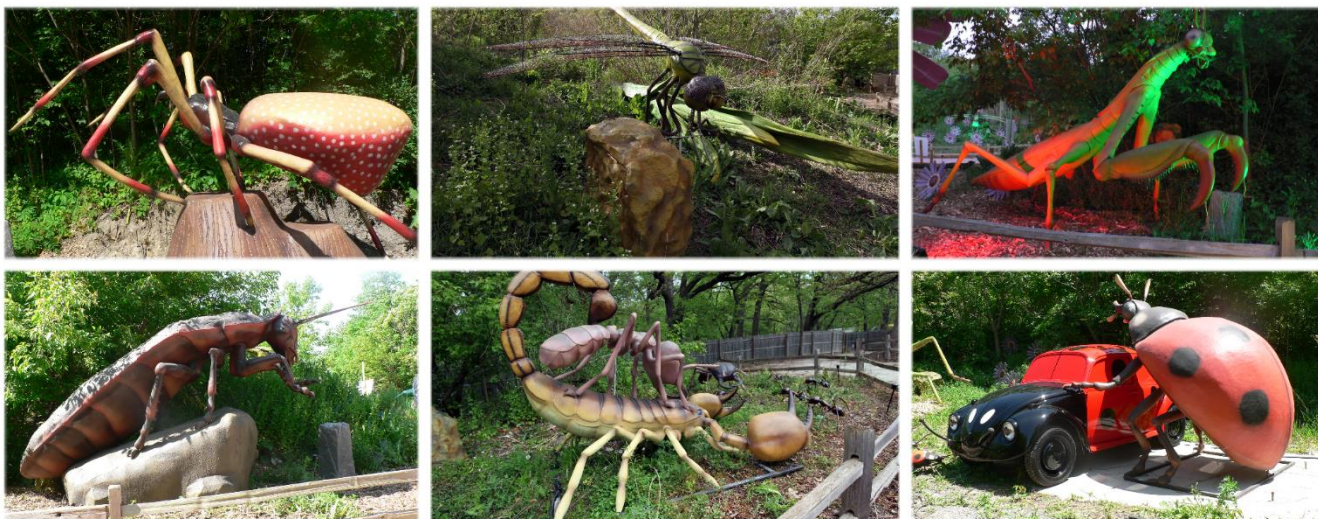
Graphics package (2014)	1
Lighting package including 15 wall wash sets	1
Xb sound package	1
Production transfer cart	6
Stackable storage bin	12
Various equipment cases and crates -- valued with contents	1
Assorted tool cabinets and tools (counts/weights and measures sheet not provided)	1
Assorted replacement parts	1

Storage Containers

40 ft. high cube container -- CZZU0451449	1
40 ft. high cube container -- NONU7401457	1
40 ft. high cube container -- CAXU8022308	1
40 ft. high cube container -- CAXU9101335	1
40 ft. high cube container -- INKU6359371	1

Appendix H – Xtreme Bugs™ (outdoor)

Summary



Selection of exhibits contained in the exhibition

“Xtreme bugs is a fantastic outdoor adventure where your guests are ‘shrunk’ down to insect size. Through (much) larger-than-life animatronic insects- and up to 60 amazing static insects- we bring the world of bugs to life. As your guests take in our vivid scenic displays and interactive exhibits, they’ll get a new appreciation for all things buggy.” (EMG sales material)

Created in partnership with the Brookfield Zoo in 2011, the exhibition list was drawn up to tell the stories of the “Xtreme” physical and behavioral characteristics of “bugs”. The exhibition items also include smaller static insects and some larger static pieces to compliment the animatronics.

Location

The exhibition is stored in seven storage containers located in Winnipeg, MB, Canada.

Inventory

Category	Qty.
Main animatronics (all 2012)	
Japanese Hornet	1
Honey Bee	1
Ant Atta	1
Assassin Bug	1
Centipede	1
Stink Bug	1
Katydid	1



Ladybug	1
Orb Weaving Spider	1
Giant Madagascar Hissing Cockroach	1
Dragonfly - Hines Emerald	1
Tarantula	1
Praying Mantis	1
Orchid Mantis	1
Cicada	1
Cicada	1
Butterfly-Monarch	1
Atlas Moth	1
Vinegaroon	1
Scorpion And Dorylus Ant	1
Ant Dorylus	1
Ant Dorylus	1
Ant Dorylus	1
Décor features & static insects (2012 & 2014)	
Set of tree décor	5
Ant atta	10
Ant dorylus	10
Honey bee	20
Ladybug	20
Orb weaving spider	4
Cicada	20
Butterfly - green-veined white	1
Butterfly - karnar blue	1
Butterfly - spicebush swallowtail	1
Butterfly - painted lady	1
Butterfly - plum judy	1
Ant eciton burchelli	20
Ant solenopsis invicta	20
Ant large	10
Production assets/misc.	
Lighting package including 9 led 45 degree ground lights, 28 led 60 degree ground lights and 6 led outside ground lights	1
Tool cabinet	3
Various equipment cases and crates -- valued with contents	1
Telescopic jib boom crane attachment	1
Assorted replacement parts	1
Storage Containers	
40 ft. high cube container -- CAXU9898466	1
40 ft. high cube container -- NONU0480285	1
40 ft. high cube container -- NONU0138917	1
40 ft. high cube container -- NONU7373170	1
40 ft. high cube container -- NONU7380647	1
40 ft. high cube container -- NONU7380499	1
40 ft. high cube container -- TRLU5702687	1



Appendix I – Dinosaurs Alive!™; Zoo 15

Summary



Selection of exhibits contained in the exhibition

“Invite your guests into a prehistoric playground of life-size, roaring, breathing animatronics with Dinosaurs Alive! This experience is custom-designed for outdoor venues, and offers great flexibility in size and arrangement. The combination of realistic animatronic dinosaurs in a natural setting with interactive activities and large kids dig site make this outdoor exhibition strong draw for guests of all ages.” (EMG sales material)

This exhibition set of 15 animatronics features dinosaur species from both the Jurassic and Cretaceous periods, and from South America, Asia, and North America. There is a concentration of species from the Cretaceous Western Interior Seaway including the non-dinosaurian pterosaur, Quetzalcoatlus. The exhibition set includes the iconic North American Tyrannosaurus rex and Triceratops but also introduced guests to newly discovered species such as Kosmocerotops and Mojocerotops.

This exhibition set, conceived in 2012, was specifically designed for outdoor, or zoo, venues.

Location

The exhibition is stored at the Premises and the four storage containers are currently empty and located in Burnaby, BC, Canada.

Inventory

Category	Qty.
Main animatronics (2012)	
Amargasaurus	1



Dyoplosaurus	1
Kosmoceratops	1
Carnotaurus	1
Mojoceratops	1
Omeisaurus	1
Ouranosaurus	1
Pachycephalosaurus	1
Parasaurolophus	1
Quetzalcoatlus	1
Spinosaurus juvenile	1
Triceratops	1
Tyrannosaurus rex	1
Tuojiangosaurus	1
Yangchuanosaurus	1

Skeleton & interactives (2012)

Pachyrhinosaurus	1
Interactive console-parasaurolophus (valued with animatronic)	1
Interactive console-tuojiangosaurus (valued with animatronic)	1
Tyrannosaurus rex dig site	1

Production assets/misc.

Lighting package including 34 led 60 degree ground lights and 4 led 25 degree ground lights	1
Rigging kit and misc. tools (weights and measures listing not provided)	1
Various equipment cases and crates -- valued with contents	1
Assorted replacement parts	1

Storage Containers

40 ft. high cube container -- PCIU9860976	1
40 ft. high cube container -- TGHU7245996	1
40 ft. standard container -- NONU4247844	1
40 ft. standard container -- NONU7568952	1



Appendix J – Other non-categorized exhibitions Calgary Storage

Summary

Animatronics – these items, except for the Dilophosaurus, should be considered to be static. Replacement of motors and other parts is doubtful given the age of the pieces.

Location

The exhibition is stored in one storage containers located in Calgary, AB, Canada.

Inventory

Category	Qty.
Animatronics	
2007 angustinaripaterus (mi-1)	1
2007 baryonyx (md-1)	1
2007 parasaurolophus (mh-1)	1
2007 tyrannosaurus rex juvenile (my-2)	1
2009 velociraptor (mv-1)	1
2007 yangchuanosaurus (ml-1)	1
2008 yangchuanosaurus (ml-1c)	1
2012 dilophosaurus (mj-1g)	1
Storage Containers	
40 ft. high cube container -- TRLU8142863	1



Appendix K – Other non-categorized exhibitions Olympia Storage

Summary

Animatronics – apart from the Shantungosaurus and Irritator all other pieces are now considered to be static.

Décor & Costumes – the two Tyrannosaurus rex costumes are constructed in lightweight fabric over a superstructure. Each has a monitor and controls for the movements of the “dinosaur character” in the interior of the costume. The monitor allows the operator a restricted view in front of the head of the costume.

Fossils & Skeletons – except of the fossil of the small aquatic reptile, Hypholosa, all other pieces are replica.

Interactives – the Skin, Bones and Digestion interactive is a three-section piece that illustrates through touchable items and text highlights of dinosaurian skin, bones and digestion. The dig table displays three types of dinosaur footprints.

Location

The exhibition is stored in seven storage containers located in Burnaby, BC, Canada.

Inventory

Category	Qty.
Animatronics	
2008 Apatosaurus Mini (Mc-1s)	1
2007 Metriacanthosaurus (Mx-1)	1
2008 Omeisaurus Mini (Mg-1s)	1
2008 Parasaurolophus Mini (Mh-1s)	1
2008 Triceratops Mini (Mo-1s)	1
2009 Tyrannosaurus Rex Juvenile-Feathered (Myf-2)	1
2009 Yangchuanosaurus (MI-1e)	1
2013 Shantungosaurus (Mst-1)	1
2009 Dilong (Mb-1)	1
2010 Angustinaripterus (From Dino 6k)	1
2009 Metriacanthosaurus - Temp Assignment (From Dino 6k)	1
2007 Omeisaurus (From DTTB)	1
2007 Apatosaurus (Mc-1)	1
2007 Apatosaurus Juvenile (Mc-2)	1
Tyrannosaurus Rex Juvenile-Feathered (Myf-2A)	1
Irritator (Mii-2)	1
Décor & costumes	
Fossil case c	4
Fossil case f	1



Wall-mounted fossil case	3
Tyrannosaurus rex costume	2
Display Case E	1
Display Case C	1
Display Case B	1
Display Case F	1
Exhibition Walls	20

Fossils and skeletons (2009)

Gasosaurus constructus ischium	1
Hyphalsaurus (authentic)	1
Microraptor	1
Placoolithus eggs	1
Yanornis	1
Angustinaripterus longicephalus skeleton	1
Bishanopliosaurus skeleton (from Dino 6k)	1
Giganotosaurus skeleton (from DTTB)	1
Mamenchisaurus skeleton (from PvP)	3
Yangchuanosaurus skeleton (from PvP)	1
Monolophosaurus skeleton (from PvP)	1
Tuojiangosaurus skeleton (from PvP)	1
Gasosaurus Skeleton	1
Huayangosaurus Skeleton	1
Yunnanosaurus Skeleton	1
Monolophosaurus Skeleton	1

Production assets/misc.

Various equipment cases and crates -- valued with contents	1
--	---

Storage Containers

40 ft. standard container -- OOLU7201940	1
40 ft. standard container -- NONU1478524	1
40 ft. standard container -- APLU9032831	1
40 ft. standard container -- NOSU4487778	1
40 ft. high cube container -- TCLU5901355	1
40 ft. high cube container -- TTNU9780924	1
40 ft. high cube container -- FSCU6155570	1



Appendix L – Not Assigned to exhibition Premises Warehouse Storage

Summary

Animatronics – Scorpion and Dorylus ant built for trade show display and used once. Juvenile sized Pachycephalosaurus in good condition.

Décor and Fiberglass Dinosaurs – small fiberglass heads of three dinosaurs meant to attach to a wall. Never used. The antique Chinese chairs and 5 screen panels were used as props in an exhibition. The pieces are in fair to good condition. The rubber sand is TPV granules, unused and in original bags. This item was used in the dig tables instead of real sand. The camouflage sheets are all in very good condition.

Fossils & Skeletons – the Yunnanosaurus skeleton was recently refurbished and contains some real fossil material (approximately 10%). The Lufengosaurus skeleton has no armature.

Lighting – LED lights and connector purchased in 2018/2019 but never used.

Skeletons – replica skeletons, the Protoceratops is without armature and unpainted. The full-sized Yangchuanosaurus skeleton was refurbished but not used since refurbishment.

Graphics – various exhibition graphics in large format sizes in various sizes on canvas and stretcher frame and exhibition graphics on polycarbonate substrate from the old style 2,000 sq ft exhibition. Blank polycarbonate substrate in 90cm x 30cm and 80cm x 60cm.

Interactives – four wooden surrounds for housing the Tyrannosaurus rex dig pit pieces, mould for the T. rex dig pit included in this section.

Lighting – exhibition lights used in Ireland, quantity unknown and LED ground lighting used for exhibition purposes.

Production – used control boxes for animatronics, Behringer speakers and power cables from previously decommissioned animatronics.

Travelling Animatronics – small sized animatronics weighing approximately 65 kilograms each. Previously used for promoting an upcoming/occurring exhibition at a venue.

Location

These assets are located in a warehouse on the Company's Premises in Richmond, BC, Canada.

Inventory

Location & Description	Qty.
Animatronics	
Scorpion And Dorylus Ant (Ischr-1A)	1
2011 Pachycephalosaurus (Mpp-2B)	1



Décor	
Carpet Tiles Old Trade Show	105
Palm Tree Set Of 2	1
Palm Tree Set Of 2 -12 Ft. Tall	1
Insignia Tv	1
Fan Palm Leaves-Small	1
Fan Palm Leaves-Large	4
Palm Leaves Set	3
Yucca Tree	3
Tree-Multi Branch	8
Ferns-Green Small (Bags)	5
Palm Tree-Small	2
Camouflage Bagged With 10 Sheets Per Bag	84
Tree Base	14
Chinese Wooden Chair Antique	3
Stanchions	28
Table-End	2
Rubber Sand	18
Foliage Set	1
Rubber Mulch	2
Reading Rail Stands	3
Fossil case a (from PvP)	6
Fossil case b (from PvP)	2
Fossil case d (from PvP)	2
Fossil case e (from PvP)	3
Excavation site	1
Fossils & Fibreglass Dinosaurs	
Dino Footprint Molds Plaster Cast Various	3
Caudipteryx Mould	1
Microraptor Mould	1
Confuciusornis Mould	1
Sinosauropteryx Mould	1
Cuspirostrionis Mould	1
Yanornis Mould	1
Longipteryx Mould	1
Cathayornis Mould	1
Tooth Mould	2
Huanghetitan Caudal Vertebrae	1
Dino Footprint Mould	5
Hadrosaur Skull Replica	1
Huayangosaurus Dorsal Spine	1
Angustinaripterus Skull	1
Elongatoolithus Sp Egg	2
Dinosaur Claws	2
Cuspirostrionis	1
Liaoningornis	2
Cathayornis	1
Sinosauropteryx	1
Confuciusornis	1
Microraptor	1
Excavation Site	1
Caudipteryx	3
Confuciusornis	2
Sinosauropteryx	1
Therizanosaurus Nest	1
Sinosauropteryx Plaque	1
Sauropod Egg (Authentic)	1



Touch Fossils	4
Oviraptor Egg Single (Authentic)	1
Keichisaurus (Authentic)	1
Confuciusornis Plaque	2
Pterosaur Skull - Dsungaripterus?	2
Mamenchisaurus Skull	1
Triceratops Horns	2
Allosaurus Skull	1
Yangchuanosaurus Skull	1
Sinosauropteryx	2
Yanornis	1
Protocepherus	1
Plateosaurus Claws	1
Allosaurus Skull	1
Lycopera (Possibly Authentic)	1
Keichousaurus (Possibly Authentic)	1
Carnosaur Footprint	3
Huayangosaurus Parascapular Spine	1
Placoolithus Eggs	2
Coprolite (Authentic)	2
Yandusaurus Foot	1
Shunosaurus Bony Tail Club	1
Omeisaurus Bony Tail Club	4
Angustinaripterus Skull	1
Oviraptor Egg (Authentic)	1
Spinosaurus Teeth (Authentic)	1
Mosasaur Teeth (Authentic)	1
Sauropoda Egg (Authentic)	1
Various Fossil Molds	1
Oviraptor Egg (Authentic)	1
Yangchuanosaurus Skull	1
Omeisaurus Cervical Vertebra	1
Hadrosaur Skull	1
Giganotosaurus Head Skull Combo - Fiberglass	1
Agilisaurus	1
Cathayornis	1
Caudipteryx	2
Confuciusornis	4
Cuspirostrisornis	1
Elongatoolithus Sp Egg	1
Hadrosaur Egg Or Segnosaurid Egg (Authentic)	1
Huayangosaurus Dorsal Spine	1
Huayangosaurus Dorsal Vertebra	1
Huayangosaurus Parascapular Spine	1
Keichousaurus	1
Longipteryx	1
Lycopera (Authentic)	1
Omeisaurus Cervical Vertebra	2
Omeisaurus Scapula	1
Omeisaurus Scapula	1
Omeisaurus Tooth	1
Plateosaurus Claws	1
Protopsephurus	1
Huanghetitan Caudal Vertebrae 1	1
Sichuanichelys Carapace	2
Sinosauropteryx	2
Spinosaurus Teeth (Authentic)	5
Supersaurus Scapula	1



Triceratops Horns	1
Yangchuanosaurus Skull	2
Longipteryx	1
Theropod Egg (Authentic)	1
Huanghetitan Caudal Vertebrae 1 Mould	1
Liaoningornis	1
Mosasaur Teeth (Authentic)	1
Allosaurus Skull	1
Therizinosaur Eggs	1
2007 Tuojiangosaurus Skeleton	1
Bellusaurus Skeleton	1
Lufengosaurus Skeleton	1
Allosaurus skull (from PvP)	1
Angustinaripterus longicephalus skull (from PvP)	1
Huanghetitan (ruyang yellow river) forelimb (from PvP)	1
Oviraptor egg (authentic) (from PvP)	1
Placoolithus cf. taohensis eggs (from PvP)	2
Shunosaurus phalanges (from PvP)	1
Triceratops horns (from PvP)	1
Yangchuanosaurus skull (from PvP)	1
Carnosaur footprint (from PvP)	1
Huanghetitan (ruyang yellow river) forelimb	1
Skeletons	1
Shunosaurus Skeleton	1
Agilisaurus Trade Show Skeleton	1
Tuojiangosaurus	1
Yangchuanosaurus Skeleton (1 Of 3)	1
Yangchuanosaurus Skeleton (2 Of 3)	1
Yangchuanosaurus Skeleton (3 Of 3)	1
Velociraptor Skeleton	1
Protoceratops Skeleton	1
Oviraptor Skeleton	1
Mapusaurus juvenile skeleton	1
Graphics	
Lfg French English 5000	1
Lfg French English 2000	1
French/English Hardboard Graphics 2000 Sq Ft	1
Hardboard Graphic Panels Wall Mount	24
Hardboard Graphic Panels Reading Rail	15
Various Hardboard, Wall-Mount, Floor-Mount And Reading Rail Graphic Panels	1
Interactives	
Dig Pits	4
Tyrannosaurus Rex Dig Pit Molds	4
Dig Table Molds	2
Skeleton magnet wall (from PvP)	2
Stamp station – various (from PvP)	10
Tyrannosaurus rex dig site	1
Skin, bones, digestion interactive	1
Lighting	
Lights Ireland Q107 220 Volt (Qty. Not Provided)	1
Led Wall Wash Lights	28
Led Ground Lights	41
Led Lights	48
Power Adaptor	15



3-Way Track Lamp	600
3-Wire Track	120
90 Degree Track Connector	80
3-Way Track Connector	20
End Cap Connector	40

Production

Various Control Boxes	320
Various Speakers (Several Line Entries For Behinger Speakers/Many Tagged "Need Servicing")	228
Various Production Cases	20
Power Cable For Speakers	103
Motor 150W	78
Motor 450W	12
Motor 600W	11
12 Various Speakers And Related Cable	1

Warehouse Travelling Animatronics

2012 Dilophosaurus (Mj-2B,F,G,H) @1,000 Ea.	4
2015 Dilophosaurus (Mj-2J)	1
2018 Hickory Horned Devil (lhhd-1,1A) @1,250 Ea.	2



Appendix M – Not Assigned to exhibition Kansas City Warehouse Storage

Summary

Animatronics – giant Japanese hornet (Vespa mandarinia) built for the Xtreme Bugs exhibition. The piece is in 2 40-foot containers.

Location

The exhibition is stored in two storage containers located in Kansas City, KS, America.

Inventory

Category	Qty.
Animatronics	
11m. hornet with controls and speaker (2 full containers)	1
Storage Containers	
40 ft. high cube container -- OOLU5787010	1
40 ft. standard container -- TMMU4452356	1



Appendix N – Head Office Assets (on Premises)

Summary

Head Office Assets comprise: 2 forklifts, warehouse and material handling equipment; repair and maintenance tools and supplies; warehouse racking and shelving; spare exhibition assets (not included in the Warehouse Inventory listings); office furnishings and seating; and computer and office equipment.

Location

These assets are located at the Company's Premises in Richmond, BC, Canada.

Inventory

Category	Qty.
Main warehouse area	
Husky rolling tool cabinet with contents	2
Blue and grey parts bins and kits with contents	1
Bynford/husky rolling tool cabinet with contents	1
Bookcase, stereo equipment, lights and parts bins	1
Work bench with vise, bench grinder, drill press, band saw and cabinets with contents	1
Dollies and cleaning misc.	1
First aid cabinet and white totes with contents	1
Assorted parts bins, fire extinguishers and tools on wall	1
Work table with small compressor	1
Bay of pallet racking	1
Husky 2 dr. storage cabinet	4
Contents in and on 4 husky 2 dr. cabinets including air tools, power tools, hand tools, clamps, paints, consumables and cleaning products	1
Assorted air line, small fan and extension cords	1
6 ft. step ladder and pylons	1
Campbell hausfeld portable compressor	1
2 industrial fans	1
Shipping and wrapping supplies	1
General table saw with table and king dust collector	1
Ryobi mitre saw with portable stand	1
First aid kit, shop vac and roller stand	1
3 ft. flame-proof storage cabinet	1
5 ft. flame-proof storage cabinet	1
Contents in 2 flame-proof storage cabinets including paints, fluids, adhesives and consumables	1
2 flame-proof disposal cans	1
Doosan bc25s-5 2,300 lb. capacity electric forklift with mt12 charger and fork extensions (ser.# lz-00155)	1
Bay of pallet racking	1



2 saw horses and 4 roller stands	1
Shorty lms-ebt-46-4 telescopic jib boom crane attachment	1
(2) 2-tiered carts, 2 step ladders and (4) 4-wheel dollies	1
5-bay run of e-z-rect shelving	1
5 assorted step ladders to 12 ft.	1
Magnum drill press, portable table saw and portable compressor	1
3 black shelf units	1
2 shop vacs, fan and cleaning misc.	1
Contents of 3 black shelf units including power, air and hand tools, small compressor, welding accessories, lights and totes	1
Rolling panel cart for pole storage	1
(25) 4-wheel dollies	1
Double bay run of pallet racking	1
4-bay run of pallet racking	1
Pallet jack	1
Pallet jack	4
4 assorted step ladders to 10 ft.	1
8 queuing stanchions	1
Rolling wood work table	3
Red rolling tool cabinet with tools and vise	1
2 small wood work benches, small scaffold unit and shelf	1
Fan, stools, extension cords, garbage bins and work light	1
(2) 2-tiered carts and loose tools	1
Small flame-proof storage cabinet	4
Triple bay run of pallet racking	1
Suspended trellis system with 6 chain hoists	1
Stackable storage bin	12
2-tiered cart	3
Pressure washers	1
Black material cart	1
Daewoo propane forklift (current not running - last operated 6 months ago according to the company)	1
Double bay run of pallet racking	1
Triple bay run of pallet racking	2
Double bay run of pallet racking	1
Rolling tool cabinet with tools	4
Rolling tool cabinet with tools	1
17 bays of 5 ft. shelving	1
Mastercraft rolling tool cabinet with tools and 3 small tool boxes	1
BBQ	1
U-line 5,000 lb. capacity manual pallet jack with scale	1
Craftsman rolling tool cabinet with tools	1
(10) 4-wheel dollies	1
Pallet jack	1
Narrow aisle pallet jack	1
(2) 2-tiered carts, 2-wheel dolly and 2 stools	1
Pressure washer, chop saw, cooler and cabinet	1



Suspended tarp system with cable and lifting hardware	1
2 step ladders	1
Brother multifunction machine	1
Ridgid shop vac	1
Assorted hoses and cleaning misc.	1
"cottage" and electrical repair	
2 bookcases, desk, chair and computer with 2 monitors	1
Motorola cp185 radio with charger	12
Motorola radius cp200 radio with charger	2
6 ft. x 12 ft. wood structure	1
Contents of electrical repair room including rolling tool cabinet, tools, work table, stool, soldering station and supplies	1
Main floor-west	
3-person panel system with maple desks	1
Computer with monitor	3
Computer with double monitor	2
iMac computer	3
iMac computer	3
4 dr. lateral filing cabinet	3
Meridian phone -- valued with phone system	4
5 tripods	1
Monitor	4
Mesh-back office chair	7
4 bookcases	1
Client chair	6
2 dr. lateral filing cabinet	1
Office chair	8
2 mahogany desk units and overself	1
Binding machine, clocks, whiteboards and office supplies	1
Maple desk unit	1
Canon eos rebel t3 camera	1
Canon eos rebel t5 camera	1
Canon efs 18mm-55mm lenses	3
Canon 50mm lens	1
Portable tripod and camera bag	1
Dell latitude e5530 laptop	1
HP pavilion dv6 laptop	1
HP 15-bw028ca lap top	1
Surface 1769 tablet/laptop	1
iPhone a1459	1
iPhone x	1
Main floor	
Rolling pedestal	3
Black 2 dr. cabinet	1
Assorted whiteboards, notice boards, shredder and office supplies	1
Maple desk unit	2
Mesh-back office chair	10



Office chair	7
Black sofa	1
Bookcase	1
Bay of e-z-rect shelving	1
Computer with double monitor	2
Computer with monitor	3
2 dr. lateral filing cabinet	1
Maple desk unit	1
3 dr. lateral filing cabinet	1
4 dr. lateral filing cabinet	1
Mahogany boardroom table	2
Toshiba television	1
Monitor	5
Stand-up desk station	1
Hp designjet t120 printer	1
Epson artisan 810 printer	1
5 antique wood panels	1
Mahogany desk unit with overshelf	1
Grey sectional sofa	1
Meridian phone -- valued with phone system	5
Mahogany desk with 2 cabinets	1
Exec. highback chair	1
Black loveseat	1
Acer laptop	1
Pedestal and office supplies at reception	1
Assorted pictures, small models and signs	1
Titanic model with wood and glass display case (1:192 scale by fine art models)	1
Sofa and coffee table	1
Literature rack	1
Earthquake kit in 2 rolling cases	1
Lunchroom table and 7 chairs	1
2 maple cabinets	1
Fridge, microwave, water cooler, coffee misc. and lunchroom dishes	1

Second floor

2 dr. legal filing cabinet	2
Tan highback chair	13
Brother multifunction machine	3
Mesh-back office chair	8
Office chair	11
Mahogany desk unit	5
Mahogany desk unit	3
Mahogany pedestal	2
Mahogany framed client chair	5
4 dr. lateral filing cabinet	2
6 dr. lateral filing cabinet	1
2 dr. lateral filing cabinet	1



4 dr. legal filing cabinet	3
Computer and monitor	1
Mahogany desk	1
Glass-front cabinet	2
Mahogany 4 dr. lateral filing cabinet	6
I Mac computer	2
Small desk and bookcase	1
Monitor	5
Clocks and assorted office supplies	1
Mahogany boardroom table	2
Coat tree	1
Polycom conferencing phone	1
Mahogany exec. desk	1
Highback and lounge chair	1
Samsung 55 in. television	1
Mahogany 2 dr. lateral filing cabinet	2
Mahogany 2 dr. cabinet	1
Gardex combination safe	1
Model, pictures and 12 posters	1
Meridian phone -- valued with phone system	4
2 podium speakers (different sizes)	1
Ironing board, microwave, water cooler, coffee misc. and dishes	1
9 older computers and misc. office equipment	1
Grey desk	1
4-wheel dolly	1
Black rack	1
Meridian phone system with sets throughout premises	1
Video surveillance system with 2 dvr's and cameras	1
2 dlink and 2 cisco switches and misc. network peripherals	1
2 hp procure 4000m switches (not installed) and various cable and hardware	1
Apc rack-mount ups	3
Dell poweredge t610 server	1
Computer with monitor	1
Ctera c-400-1 back-up	1
Server rack	2

Appendix O – Head Office Assorted Fossils

Summary



A selection of the Fossils

A collection of real and replica fossils including hypsilophodon, coprolite, dinosaur eggs, spinosaurus and mosasaur teeth, trilobites and fern and tree fossils.

Location

These assets are located at the Company's Premises in Richmond, BC, Canada.

Inventory

Category	Qty.
Fossils	
Hypsilophodon Fossil (authentic)	1
Coprolite (authentic)	>100
Dinosaur eggs (authentic)	4
Spinosaurus teeth (authentic)	5
Mosasaur teeth (authentic)	2
Trilobites (authentic)	5
Fish Fossil (authentic)	3
Leaf fossils (authentic)	3
Assorted replica fossils	7

Appendix P – Non-physical assets

Summary



Example illustrations

Non-physical assets comprise: commissioned digital high resolution illustrations of dinosaurs, bugs and sea creatures as well as the Trademarks associated with the Company's exhibitions.

Location

These items are non-physical assets and therefore can be collected digitally.

Inventory

	Qty.
Illustrations	
Bugs	25
Dinosaurs	71
Sea Creatures	23
Trademarks	
DINOSAURS UNEARTHED	1
DINOSAURS ALIVE	1
DINOKING	1
DINOSAURS ALIVE! Logo	1
DINOSAURS UNEARTHED Logo	1
XTREME BUGS	1

Appendix Q – Terms and Conditions of Sale

- 1 KPMG Inc., Trustee in Bankruptcy of EMG Experiential Media Group (Canada) Corp., (the “Vendor”) will consider written offers to purchase its right, title and interest in the assets categories below.
 - a) Dinosaurs Unearthed™ (2,000 sq.ft.)
 - b) Dinosaurs Unearthed™; Fossil Stories (5,000 sq.ft.)
 - c) Dinosaurs Unearthed™; New Discoveries (6,000 sq.ft.)
 - d) Dinosaurs Unearthed™; Extreme Dinosaurs™ (10,000 sq.ft.)
 - e) Dinosaurs Unearthed™; Down to the Bone
 - f) Dinosaurs Unearthed™; Predator vs Prey
 - g) Xtreme Bugs™ (indoor)
 - h) Xtreme Bugs™ (outdoor)
 - i) Dinosaurs Alive!™; Zoo 15
 - j) Other non-categorized exhibitions - Calgary
 - k) Other non-categorized exhibitions - Olympia
 - l) Not Assigned to exhibition Premises Warehouse Storage
 - m) Not Assigned to exhibition Kansas City Warehouse Storage
 - n) Head Offices Assets
 - o) Head Office Assorted Fossils
 - p) Non-physical assets - Illustrations
 - q) Non-physical assets – Trademarks
- 2 Each offer must be submitted in writing to KPMG Inc. “OFFER – EMG Experiential Media Group (Canada) Corp.” Offers will be received until 12:00 pm (noon) PST on Monday, June 22, 2020 at the email address noted below:

Attention: Phil Mitchell
E-mail: philmitchell@kpmg.ca

Alternatively offers can be made via post or fax at the address below:
KPMG Inc.
Attn. Phil Mitchell
777 Dunsmuir Street
PO Box 10426, Pacific Centre
Vancouver BC V7Y 1K3
Fax: (604) 691-3036
Telephone: (250) 244-3348
- 3 All offers shall be in writing, signed by the duly authorized officer(s) of the entity making the offer (the “Party” or the “Offeror”) and in the form prescribed by the Trustee.
- 4 Any and all offers to purchase shall be subject to the approval of the Inspectors of the Estate of EMG Experiential Media Group (Canada) Corp. and, at the sole discretion of KPMG Inc., and may also require the approval of the Supreme Court of British Columbia.
- 5 All offers must be accompanied by a bank draft drawn by, or certified cheque drawn on, a Canadian chartered bank payable to “KPMG Inc. – In Trust”, posted to the address in section 2, or a bank wire transfer (details available on request) for an amount not less than 10% of the total gross purchase price offered. On acceptance, the above-referred amount shall be deemed a cash deposit (the “Deposit”).
- 6 Cheques or drafts accompanying Offers that are not accepted by the Vendor shall be returned to the Party by either personal delivery or by prepaid registered mail addressed to the Party at the address set forth in its offer within ten days of

the rejection of the Offer, without interest thereon. For bank wire transfers, the Vendor shall return the Deposit within ten days of the rejection of the Offer, without interest and net of transfer fees thereon to bank details provided by the Offeror.

- 7 Offers must be made for one or more of the 17 lots described above in paragraph 1 herein and in section 4 of the Offer. Offers submitted for more than one lot must specifically allocate a separate price to each lot and will be considered a separate offer for each lot unless otherwise indicated. "En Bloc" offers must be so identified and allocate a specific price to each parcel included in the offer.
 - 8 The highest or any offer shall not necessarily be accepted for any or all of the referenced classes of the Assets. In addition, the Vendor reserves the right to accept any Offer at any time without notice to any other parties. Offers received by the Vendor that do not strictly comply with paragraphs 2, 3, 4, 5, 6 and 7 of these Terms and Conditions of Sale or which contain proposals to vary, amend or supplement these Terms and Conditions of Sale may in the absolute discretion of the Vendor be rejected for that reason alone or alternatively may be accepted. Before and after the opening of and acceptance of Offers, the Vendor may in its sole discretion negotiate with any Party for changes in that Party's offer. The Vendor shall not be obliged to negotiate with any Party or to give any Party an opportunity to resubmit an offer, whether or not the Vendor negotiates with another Party or Parties. Upon receipt by the Vendor of an Offer, the Party submitting the Offer shall not be entitled to retract, withdraw, revoke, vary or countermand the Offer and such Offer shall be irrevocable prior to acceptance or rejection thereof by the Vendor.
 - 9 If any Offer is accepted, the Vendor shall notify the successful Offeror on or before the close of business on 24 June, 2020 by notice in writing to the e-mail address as set forth in the Offer.
 - 10 Listings and descriptions of the Assets contained herein have been prepared solely for the convenience of prospective Offerors and are not warranted to be complete or accurate and are not part of the Terms and Conditions of Sale or any Offer. The descriptions of the Assets contained in the annexed schedules are for the purposes of identification only and no condition, warranty or representation has been or will be given by the Vendor concerning the accuracy, completeness or any other matter concerning those descriptions.
- Neither the Vendor nor the Trustee nor any of their respective officers, employees or advisors, (a) accepts any responsibility for any interpretation, opinion or conclusion that a prospective Offeror may form as a result of examining the description of the Assets or (b) accepts any responsibility to inform the prospective Offeror of any matter arising or coming to the attention of either the Vendor or the Trustee which may affect or qualify any information made available to the prospective Offeror.
- 11 All Offers will be accepted on the basis that the Offeror has inspected the Assets, that it has relied entirely on its own inspection and investigations, and that it is purchasing the Vendor's right, title and interest, if any, in the Assets on an "as is, where is" basis, and consummation of the transaction constitutes the Offeror's acknowledgement that it has satisfied itself as to all matters relating to the Assets. The Vendor expressly excludes and disclaims any and all representations, warranties, conditions and undertakings as to title, encumbrances, description, quality, quantity, cost, condition, merchantability, assignability, size and fitness for a particular purpose or as to any other matter whatsoever. Without limiting the generality of the foregoing, no condition, warranty or representation provided for or implied, including without limitation those pursuant to any statute, including the Sale of Goods Act (British Columbia) or similar legislation, is given by the Vendor and the Offeror expressly waives all such express or implied conditions, warranties and representations. Furthermore, the Offeror agrees to accept the Vendor's right, title and interest, if any, in the Assets, and acknowledges that it shall be the Offeror's own and sole responsibility to obtain and pay the cost of any consents, permits, licenses or other authorizations necessary or desirable for the transfer of such right, title and interest, if any, to the Offeror or for the operation or use of the Assets.
 - 12 The Vendor reserves the right, at any time, to withdraw from the Assets listed in the Offeror's Schedules "A" to "Q" as attached to its Offer, any items where the Vendor obtains evidence that these items may not be assets of EMG Experiential Media Group (Canada) Corp. Adjustments of Offers received will be negotiated upon withdrawal of any such item.
 - 13 The Vendor shall not be required to produce any abstract of title, title deeds or documents or copies thereof or any evidence as to title, other than those in its possession.



- 14 Any and all Offerors shall make such investigations and searches at its own expense as such Offeror and its solicitors may deem necessary with respect to the Vendor's right, title and interest, if any, in the Assets and the existence of any liens, mortgages, charges, security interests, pledges or encumbrances against the Assets having priority over the Vendor's right, title and interest, if any, therein.
- 15 Upon acceptance by the Vendor, the Offer together with these Terms and Conditions of Sale shall form a part of any Offer, shall be the agreement of purchase and sale (the "Agreement of Purchase and Sale") and shall constitute the entire agreement between the Offeror and the Vendor save and except that the Trustee may, as a condition of acceptance, require the Offeror to enter into a certain different agreement of purchase and sale with terms and conditions additional to the terms and conditions contained herein. The closing of each Agreement of Purchase and Sale shall take place at the offices of KPMG Inc., or at such other place and at such time as may be mutually agreed upon between the Vendor and Offeror (the "Closing Date"), provided that in no event will the Closing Date occur later than June 29, 2020. Time will be the essence of each Agreement of Purchase and Sale.
- 16 All of the Assets purchased which are currently located at the Premises will be removed by and at the cost of the Offeror from the Premises, by no later than July 6, 2020 and the Offeror will repair any damage caused by the removal and otherwise comply with the terms of any leases or other agreement respecting such removal, if applicable.
- All of the Assets purchased which are currently located at third party storage locations will be removed by and at the cost of the Offeror. The Offeror will be responsible for communicating with the third party storage operator regarding collection dates and any costs that may be associated with accessing and releasing the Assets.
- 17 The Assets shall be and remain at the risk of the Vendor as its interest may appear until the completion of the purchase and sale of the Assets on the Closing Date, as described in paragraph 15 hereof, and from and after such completion the Assets shall be at the risk of the Offeror.
- 18 If any Offeror fails to comply with any of the terms or conditions hereof, or the terms and conditions of the Agreement of Purchase and Sale, the Deposit and all other payments made to the Vendor shall be forfeited on account of liquidated damages, without prejudice to any of the Vendor's remedies and the Assets may be sold or resold by the Vendor in such manner and on such terms and conditions as the Vendor in its sole discretion determines, and the deficiency, if any, on any sale or resale, together with all charges attending the same or occasioned by the defaulting Offeror shall be paid forthwith upon demand by such Offeror to the Vendor.
- 19 Upon acceptance of the Offer by the Vendor, to be acknowledged in writing, the Offeror shall pay to the Vendor the following by way of a certified cheque drawn on or a draft drawn by a Canadian Chartered Bank or bank wire transfer:
- a) The balance of the purchase price, after crediting the amount of the Deposit;
 - b) All applicable federal and provincial taxes eligible in connection with the Agreement of Purchase and Sale, including without limitation, GST; and,
 - c) For bank wire transfers, any wire transfer fees.
- 20 The Vendor's right, title and interest in the Assets shall not pass to the Offeror until the purchase price, and all other payments (including the taxes referred to in 19(b)) to be made by the Offeror pursuant to the Agreement of Purchase and Sale have been paid in full and the Offeror shall have complied with all the Offeror's covenants therein contained.
- 21 The Vendor may in its sole discretion waive any and all of the terms and conditions in these Terms and Conditions of Sale.
- 22 Any Agreement of Purchase and Sale entered into by the Vendor is in its sole capacity as Trustee of EMG Experiential Media Group (Canada) Corp. and the Vendor shall incur no personal or corporate liability as a result of its entering into any such agreement or performing or failing to perform any of its obligations thereunder.
- 23 The Vendor shall not be required to pay any commission with respect to any sale pursuant to any Agreement of Purchase and Sale.



- 24 The Offeror agrees to indemnify and save harmless KPMG Inc. in its capacity as Trustee of EMG Experiential Media Group (Canada) Corp. and EMG Experiential Media Group (Canada) Corp. and each of their respective directors, officers, shareholders, employees and agents and the successors and assigns of any of the foregoing persons (each an "Indemnified Party") from and against, any and all liabilities, claims, losses, costs, fees (including without limitation any legal fees on a solicitor and own client basis), actions, damages and expenses incurred by any Indemnified Party in connection with any claim by a third party arising from or relating to, directly or indirectly, the Assets, including without limitation, defects in the Assets, claims against warranties, the sale and purchase of the Assets, the use of the Assets and/or damage, injury or death suffered or claimed, whensoever occurring and howsoever arising.

Dated at Vancouver, this 2nd day of June 2020.
KPMG Inc.,
Trustee of the Estate of
EMG Experiential Media Group (Canada) Corp.
777 Dunsmuir Street, PO Box 10426
Vancouver, BC V7Y 1K3



Appendix R – Offer

Please email to: philmitchell@kpmg.ca.

OFFER

TO: KPMG Inc.,
Trustee of the Estate of EMG Experiential Media Group (Canada) Corp.
777 Dunsmuir Street, PO Box 10426
Vancouver, BC V7Y 1K3
Attention: Phil Mitchell

1. _____
(Name of Offeror)

2. _____

(Address of Offeror)

3. _____
(Telephone Number) (Fax Number) (E-mail address)

4. The Offeror hereby submits this irrevocable Offer to purchase the following assets of EMG Experiential Media Group (Canada) Corp.:

- | | | |
|---|-----|-------|
| a) Dinosaurs Unearthed™ (2,000 sq.ft.) | \$. | _____ |
| b) Dinosaurs Unearthed™; Fossil Stories (5,000 sq.ft.) | \$. | _____ |
| c) Dinosaurs Unearthed™; New Discoveries (6,000 sq.ft.) | \$. | _____ |
| d) Dinosaurs Unearthed™; Extreme Dinosaurs™ (10,000 sq.ft.) | \$. | _____ |
| e) Dinosaurs Unearthed™; Down to the Bone | \$. | _____ |
| f) Dinosaurs Unearthed™; Predator vs Prey | \$. | _____ |
| g) Xtreme Bugs™ (indoor) | \$. | _____ |
| h) Xtreme Bugs™ (outdoor) | \$. | _____ |
| i) Dinosaurs Alive!™; Zoo 15 | \$. | _____ |
| j) Other non-categorized exhibitions - Calgary | \$. | _____ |
| k) Other non-categorized exhibitions - Olympia | \$. | _____ |
| l) Not Assigned to exhibition Premises Warehouse Storage | \$. | _____ |
| m) Not Assigned to exhibition Kansas City Warehouse Storage | \$. | _____ |
| n) Head Offices Assets | \$. | _____ |
| o) Head Office Assorted Fossils | \$. | _____ |
| p) Non-physical assets - Illustrations | \$. | _____ |
| q) Non-physical assets – Trademarks | \$. | _____ |

5. The total amount hereby offered is \$_____.

6. The Offeror represents and warrants that this Offer constitutes a legal, valid and binding obligation of the Offeror.

7. Tick the appropriate box:

- ☐ Sent by post, please find the Offeror's Certified Cheque/Bank Draft payable to "KPMG Inc. – In Trust" in the amount of \$_____ representing no less than ten percent (10%) of the total amount of the Offer submitted herein; OR
- ☐ Please find attached confirmation of the Offeror's bank wire transfer to the details provided by the Trustee in the amount of \$_____ representing no less than ten percent (10%) of the total amount of the Offer submitted herein.

EMG Experiential Media Group (Canada) Corp. – in Bankruptcy

58



8. The Offeror agrees that the Terms and Conditions of Sale issued by the Trustee, KPMG Inc., attached to this Offer as Schedule "I", form part of this Offer.

Dated at _____, this ____ day of _____, 2020.

_____ **PRINT NAME OF OFFEROR**

_____ *Signature*