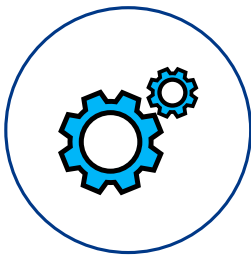




# Dispute Advisory Services

# In a nutshell

Dispute Advisory Services include accounting, economic, loss quantification and valuation related advice and opinions as well as document disclosure services. Our objective assessments help to resolve disputes in arbitration, litigation, insurance claims, and transactions. We serve as privileged consultants, expert witnesses, arbitrators and panel appointed neutral experts and assist litigants and their legal counsel with potentially costly and disruptive disputes and litigation.



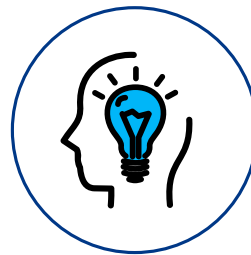
## Client issues

Our clients face the following types of disputes:

- White-collar crime, bribery and corruption
- Commercial disputes
- High-value family and matrimonial disputes
- Shareholder disputes
- Post-acquisition disputes
- Insurance claims
- Contract breaches
- Data security, Cyber
- IP infringement

Our Dispute Advisory Services include:

- Damages assessments
- Investigations and analyses
- Data collection, data analyses and e-disclosures
- Expert witness and oral testimonies, or acting as court-appointed expert witnesses
- Arbitration, mediation
- Forensic transaction services



## Our approach

- We are able to respond quickly and effectively and we work hand-in-hand with your legal counsel.
- We provide a practical and tailored approach to each assignment, sensitive to concerns over business disruption, confidentiality and reputation issues.
- We have the ability to help you and your legal counsel access, manage and analyze large volumes of digital data and documents.
- We help you collect evidence for the procedure and we provide analyses that can be integrated in the lawyer's memorandum or part of an independent report.
- We prepare clear and objective reports that provide a powerful presentation of facts, opinions and conclusions.

## Main sectors & clients

Our clients come from all industries, such as financial services, industrial products, energy and natural resources, transportation, building, construction & real estate, retail, healthcare & life sciences, government, non-profit and international organizations, and individuals (matrimonial and other cases).



## How we have helped our clients in the past

### Commercial dispute

In the context of a commercial dispute, we assisted the legal counsel of one of the parties by collecting and extracting data from bank statements, reconstructing and analyzing the financial flows of the adverse party's bank accounts (more than 5,000 pages of bank statements). We also:

- Prepared analyses to identify the destination and counterparties of financial transactions
- Identified the use of funds and assets for the purpose of applying for judicial seizure
- Reviewed the documents and emails of the suspicious individual in order to gather evidence of his role in the embezzlement, using our Forensic Technology experts and IT tools such as Relativity
- Assisted lawyers in the preparation of memoranda for judicial authorities
- Assessed the financial loss suffered.

### Commercial contract breach

In the context of an ICC arbitration, we acted as an expert on behalf of a company in the industrial sector following a breach of contract, where we:

- Collected relevant documents for a financial analysis, and held working sessions with controllers, technicians and sales persons
- Assessed the damage suffered in coordination with external and the company's own legal counsels
- Testified before the arbitration court.



## Why KPMG Forensic?

KPMG Forensic offers a team of professionals experienced in providing impartial advice on a range of financial and accounting aspects of disputes. We are supported by over 40 accredited Forensic practices worldwide, giving us leverage if the complexity and nature of a case requires a multidisciplinary, extraterritorial approach.

This is an important advantage as complex disputes can arise involving parties and courts from more than one country. The coordination is carried out discreetly by your personal contact according to your needs.

---

### Contacts

#### **KPMG AG**

Badenerstrasse 172  
PO BOX  
8036 Zurich

Esplanade de Pont-Rouge 6  
PO Box 1571  
1211 Geneva 26

#### **Erwin Barentsen**

Director  
Forensic  
Zurich

+41 58 249 78 53  
ebarentsen@kpmg.com

#### **Cindy Hofmann**

Director  
Forensic  
Zurich

+41 58 249 56 25  
cindyhofmann@kpmg.com

#### **Cédric Biedermann**

Senior Manager  
Forensic  
Geneva

+41 58 249 64 80  
cbiedermann@kpmg.com

**[kpmg.ch/das](https://www.kpmg.ch/das)**

---

The information contained herein is of a general nature and is not intended to address the circumstances of any particular individual or entity. Although we endeavor to provide accurate and timely information, there can be no guarantee that such information is accurate as of the date it is received, or that it will continue to be accurate in the future. No one should act on such information without appropriate professional advice after a thorough examination of the particular situation. The scope of any potential collaboration with audit clients is defined by regulatory requirements governing auditor independence. If you would like to know more about how KPMG AG processes personal data, please read our Privacy Policy, which you can find on our homepage at [www.kpmg.ch](https://www.kpmg.ch).

© 2022 KPMG AG is a subsidiary of KPMG Holding AG, which is a member of the KPMG network of independent firms affiliated with KPMG International Cooperative ("KPMG International"), a Swiss legal entity. All rights reserved.