



# Tax Reimagined

*Tax is changing. We're changing Tax.*

August 2019

—

[kpmg.com/cn](http://kpmg.com/cn)



At KPMG we have combined our technology, transformation and compliance capabilities under a new framework — Tax Reimagined. Deploying our solution architects and leveraging this framework, we can help you develop a strategy for your tax function and design a target operating model to help ensure execution; reduce costs, improve quality and unlock value from your tax and statutory function.



# Tax function of tomorrow:

*Benefits of an enhanced and optimised tax function:*

## Reprioritised resources:

- Resource model designed to drive business outcomes

## Optimised costs & processes:

- Current state to future state operating model mapped to ensure streamlined and cost efficient processes
- Technology enabled workflow giving increased transparency and control over processes

## Data integrity & accurate reporting:

- Tailored technology and data roadmaps designed to meet to your needs
- Custom built assurance tests to ensure data integrity and improved accuracy of reporting

## Efficient Tax Operations

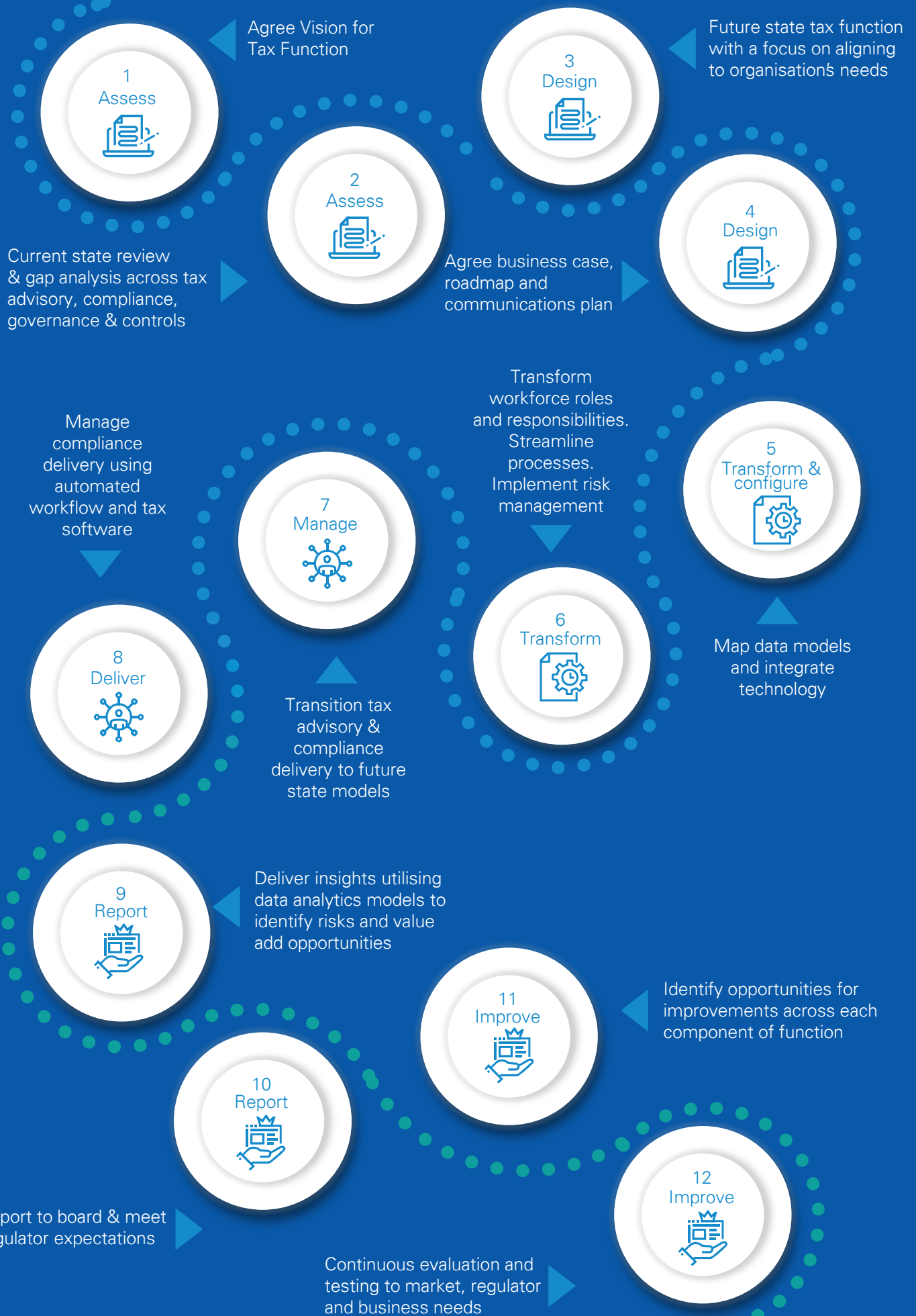
- Identify opportunities to streamline the tax function and the refocusing of tax resources to areas of significant tax risk and opportunity

## Regulator obligations met:

- Optimal operating model complemented with specialist tax expertise to ensure current issues and new legislation is reflected in tax reporting compliance obligations

## Insights for informed decisions:

- Utilising tax data analytics models to continually identify risks and value add opportunities to enable informed business decisions
- Peer benchmarking to identify industry trends and insights



# Contacts



**Lachlan Wolfers**  
Tax Partner  
+852 2685 7791  
lachlan.wolfers@kpmg.com



**Jenny Clarke**  
Tax Partner  
+612 9335 7213  
jeclarke@kpmg.com.au



**Stanley Ho**  
Tax Partner  
+852 2826 7296  
Stanley.ho@kpmg.com



**John Timpany**  
Tax Partner  
+852 2143 8790  
john.timpany@kpmg.com



**Murray Sarelius**  
Tax Partner  
+852 3927 5671  
murray.sarelius@kpmg.com



**Ansel Yip**  
Senior Tax Manager  
+852 2685 7427  
ansel.yip@kpmg.com



**Lennert Janssen**  
Senior Tax Manager  
+852 2847 5084  
lennert.janssen@kpmg.com



**Alex Lai**  
Senior Tax Manager  
+852 2685 7489  
Alex.lai@kpmg.com



[kpmg.com/cn/socialmedia](https://kpmg.com/cn/socialmedia)



For a list of KPMG China offices, please scan the QR code or visit our website:  
<https://home.kpmg.com/cn/en/home/about/offices.html>.

The information contained herein is of a general nature and is not intended to address the circumstances of any particular individual or entity. Although we endeavour to provide accurate and timely information, there can be no guarantee that such information is accurate as of the date it is received or that it will continue to be accurate in the future. No one should act on such information without appropriate professional advice after a thorough examination of the particular situation.

© 2019 KPMG, a Hong Kong partnership and a member firm of the KPMG network of independent member firms affiliated with KPMG International Cooperative ("KPMG International"), a Swiss entity. All rights reserved. Printed in Hong Kong.

The KPMG name and logo are registered trademarks or trademarks of KPMG International.

Publication number: HK-TAX19-0002

Publication date: August 2019