

2020 Risk Radar: Transport and Logistics Sector

May 2020

kpmg.com/cn

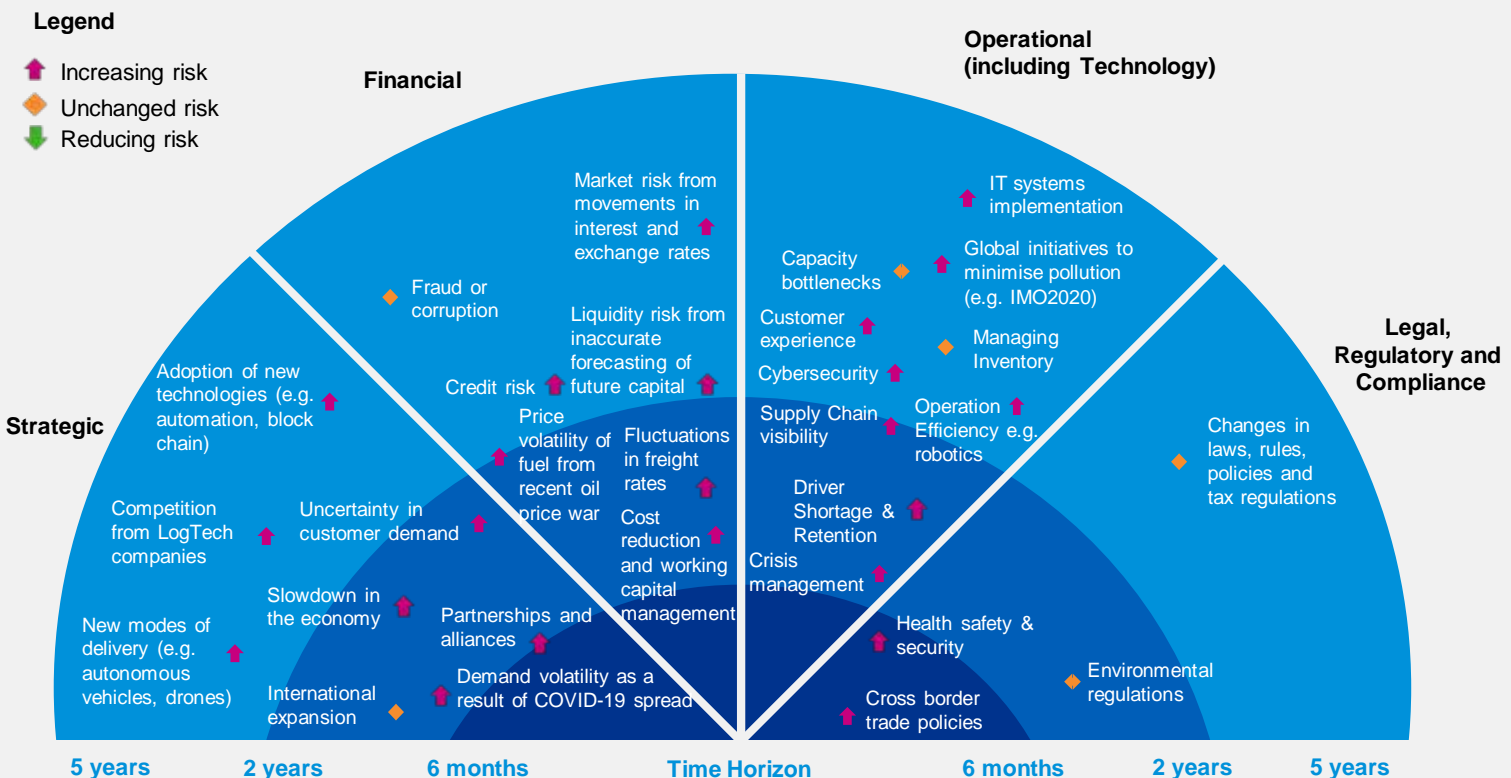


With ever-increasing global awareness on environmental protection, the launch of initiatives restricting pollutants emission poses challenges to transport and logistics organisations. Ensuring compliance with relevant regulations is essential to enhance reputation and address stakeholder expectation. Like other industries, the spread of COVID-19 has tremendous impact on the logistic and transport business which has caused deteriorating demand for both cargo and passenger flow. Effective working capital management and cost reduction is crucial.



Key trends observed in the market impacting the industry in the Greater China region:

- Decrease in demand for cargo/ passenger flow as a result of the COVID-19 spread and greater needs for effective crisis management plan;
- Challenges in reducing cost and managing working capital in response to deteriorating business performance; and
- Implementation of global initiatives restricting pollutant emission and increasing stakeholder expectation.

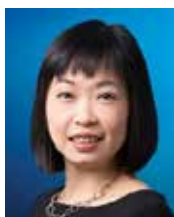


Contact us



Roy Leung

Head of Transport,
Hong Kong KPMG China
T: +852 2143 8549
E: roy.leung@kpmg.com



Li Fern Woo

Head of Internal Audit, Risk and Compliance
KPMG China
T: +86 (21) 2212 2603
E: lifern.woo@kpmg.com



Alva Lee

Head of Internal Audit, Risk and Compliance, Hong Kong
KPMG China
T: +852 2143 8764
E: alva.lee@kpmg.com



kpmg.com/cn/socialmedia

The information contained herein is of a general nature and is not intended to address the circumstances of any particular individual or entity. Although we endeavour to provide accurate and timely information, there can be no guarantee that such information is accurate as of the date it is received or that it will continue to be accurate in the future. No one should act on such information without appropriate professional advice after a thorough examination of the particular situation.

© 2020 KPMG Advisory (Hong Kong) Limited, a Hong Kong limited liability company and a member firm of the KPMG network of independent member firms affiliated with KPMG International Cooperative ("KPMG International"), a Swiss entity. All rights reserved. Printed in Hong Kong. The KPMG name and logo are registered trademarks or trademarks of KPMG International.