



# 2022 Transparency Report KPMG in Cyprus

April 2023

---

[kpmg.com.cy](https://kpmg.com.cy)







# Contents

## 01

4

### Message from the Managing Director

### Message from the Head of Audit

## 02

6

### Living our culture and Values

- 2.1 Fostering the right culture, starting with tone at the top
- 2.2 Clearly articulated strategy focused on quality, consistency, trust and growth
- 2.3 Defined accountabilities, roles and responsibilities, including for leadership
- 2.4 Overseen using robust governance structures

## 03

11

### Applying expertise and knowledge

- 3.1 Methodology aligned with professional standards, laws and regulations
- 3.2 Deep technical expertise and knowledge
- 3.3 Quality and risk management manual

## 04

13

### Embracing digital technology

- 4.1 Intelligent, standards-driven audit workflow
- 4.2 KPMG Clara

## 05

15

### Nurturing diverse skilled teams

- 5.1 Recruiting appropriately qualified and skilled people, including specialists, with diversity of perspective and experience
- 5.2 Assigning an appropriately qualified team
- 5.3 Investing in data centric skills – including data mining, analysis and visualization
- 5.4 Focused learning and development on technical expertise, professional acumen and leadership skills
- 5.5 Recognizing quality

## 06

18

### Associating with the right clients and engagements

- 6.1 Following the client and engagement acceptance and continuance policies
- 6.2 Accepting appropriate clients and engagements
- 6.3 Managed portfolio of clients

## 07

20

### Being independent and ethical

- 7.1 Acting with integrity and living our Values
- 7.2 Maintaining an objective, independent and ethical mindset, in line with our code of conduct and policies
- 7.3 Zero tolerance of bribery and corruption

## 08

25

### Performing quality engagements

- 8.1 Consulting where necessary
- 8.2 Critically assessing audit evidence, using professional judgement and skepticism
- 8.3 Direct, coach, supervise and review
- 8.4 Appropriately support and document conclusions

## 09

27

### Assessing risks to quality

## 10

28

### Communicating effectively

- 10.1 Provide insights, and maintain open and honest two-way communication
- 10.2 Conduct and follow-up on the Global People Survey (GPS)

## 11

29

### Monitoring and remediation

- 11.1 Rigorously monitor and measure quality at the local and global level
- 11.2 Obtain, evaluate and act on stakeholder feedback
- 11.3 Perform root cause analysis

## 12

32

### Financial Information

## 13

33

### Partner remuneration

## 14

34

### Network arrangements

- 14.1 Legal structure
- 14.2 Responsibilities and Obligations of Member Firms
- 14.3 Professional Indemnity Insurance
- 14.4 Governance structure

## 15

36

### Statement by the Board of Directors of KPMG Limited on the effectiveness of quality controls and independence

## 16

38

### Appendices

# Message from the Managing Director



I am very pleased to present to you our 2022 Transparency Report. The report contains insightful information about our strategy, our performance, our corporate governance and quality control systems for 2022.

KPMG has been operating in Cyprus since 1948 and currently employs an average of 836 professionals working

from 6 offices across the island. It is a member of KPMG International Limited, a global organisation of independent professional services firms providing Audit, Tax and Advisory services. KPMG operates in 143 countries and territories and has approximately 265.000 people working in member firms around the world.

KPMG in Cyprus is a leading professional services organisation with revenues which amount to €46m and which has contributed significantly to government revenues during the year to December 2022. This amounted to €17,8 million, including income tax, special contribution for defence, PAYE, VAT, GHS and social insurance contributions.

2022 was yet another challenging year for the professional services sector. The prolongation of the pandemic as well as the outburst of the war in Ukraine inevitably negatively affected the anticipated rate of growth of the economy. Despite the above challenges, we managed to maintain our revenues at satisfactory levels recording a growth of 0.4% to reach €46m.

Our strategy during 2022 has concentrated towards building on our most important growth pillars namely, advancing on our digital and technological capabilities both internally as well as externally helping our clients, strengthening our bundle of innovative services offered to our clients and maintaining the highest standards of quality in everything we do. We have also invested and will continue doing so, in our ESG capabilities, starting from transitioning our Organisation by committing to become carbon neutral by 2030 and continue assisting our clients in their ESG journey. We have also invested heavily into training and upskilling of our people across all functions. Despite the several challenges faced by the Audit profession in 2022, as in every year, we continued our commitment to quality. We continuously strive to deliver high quality services

to our clients across all functions of the Firm. We achieve this by applying the KPMG Values of integrity, excellence, and courage in everything we do.

Commitment to our communities is also fundamental to our values. Together we made a positive impact to the society through a number of specific CSR initiatives under four different pillars: education (CIM scholarship, career fairs, Global Cyber day), health (blood donations, Movember, race for the cure), environment (plant a tree at fire affected areas) and social inclusion (Sophia for children, Hope for children, adopt a family for Christmas and Easter).

All the above could not be achieved without the help of our most valuable asset, our people, to whom we are so grateful. Despite the social distancing and the disruption that was caused by the war, they have all been working so hard, contributing positively to our deliverables.

Transparency and accountability have been and shall continue to be framing the way we deliver our work.

Two of our audit partners have opted for a career in other industries at the end of 2022. I wish them both every success in their new positions.

In 2023, we announced the appointment of Petros Mavrommatis as a new Audit Partner effective from 01/03/2023. On behalf of all of our partners, I wish Petros every success in the KPMG family.

Our strategy is fully aligned with the strategic priorities of KPMG International, tailor-made to the needs of the market in Cyprus.

All our partners and members of staff are fully engaged in maintaining KPMG as the Clear Choice for our clients, our people and the society in general.

**Christos V. Vasiliou**  
Managing Director  
28 April 2023



# Message from the Head of Audit



As the world continues to change, we know that our role and our purpose at KPMG has never been more important. As the leading provider of audit and assurance services in Cyprus we know that the trust placed in us can never be taken for granted.

The quality of our services is directly tied to our success. Achieving this level of excellence requires hard

work, dedication and focus, as well as ongoing investment in people and technology. Our remarkable people are at the heart of our success. Despite the challenges of recent years, our people have demonstrated exceptional resilience and a deep commitment to delivering the highest quality services to clients and stakeholders whilst upholding our values and prioritising ethical conduct.

We, in turn, prioritise the wellbeing and professional development of our people, recognising that their individual growth is essential to our collective success. As we move past the challenging times of the past few years, we continue to invest in the systems, tools, wellness support and skills needed to help our teams work effectively and thrive. These investments include direct support for physical and mental health and enhanced training, coaching and on the job learning.

To enhance the audit experience, we have invested in KPMG Clara, a cloud-based audit methodology and workflows platform that combines the best of technology and human expertise to deliver smarter, data-driven outcomes and deeper insights. This technology supports our audit professionals

in delivering consistent, high-quality audits. In addition, we have strengthened our quality management system globally to align with the new International Standard on Quality Management (ISQM 1) and meet the evolving demands of clients, regardless of their size or location.

We recognise the essential role we play in building confidence in our capital markets and we continue to take meaningful steps towards this with steadfast commitment to our core values. As the world changes rapidly, we remain deeply committed to all our stakeholders as we continually monitor and improve our system of quality control and invest in the future of audit. This commitment is the foundation of our success.

**Sylvia Loizides**

Head of Audit  
28 April 2023

# 02

## Living our culture and Values

It's not just what we do at KPMG that matters: we also pay attention to how we do it. Our Values are our core beliefs, guiding and unifying our actions and behaviors. Shared across every level and in every country, jurisdiction and territory in which we operate, they are the foundation of our unique culture.

### 2.1 Fostering the right culture, starting with tone at the top

#### 2.1.1 Tone at the top

KPMG global leadership, working with regional and member firm leadership, plays a critical role in establishing our commitment to quality and the highest standards of professional excellence. A culture based on integrity, accountability, quality, objectivity, independence, and ethics is essential in an organization that carries out audits and other services on which stakeholders rely.

At KPMG Limited we promote a culture in which consultation is encouraged and recognized as a strength. We communicate our commitment to clients, stakeholders, and society at large to earn the public's trust.

Our Values lie at the heart of the way we do things. To do the right thing, the right way. Always. They form the foundation of a resilient culture ready to meet challenge with integrity, so we never lose sight of our principal responsibility to protect the public interest. And they propel us forward — through our work and the example we set — as we inspire confidence and empower change throughout the world.

KPMG is committed to quality and service excellence in all that we do, helping to bring our best to clients and earning the public's trust through our actions and behaviors both professionally and personally.

Our Values guide our behaviors day-to-day, informing how we act, the decisions we make, and how we work with each other, our clients, companies that we audit, and all of our stakeholders.

*Integrity: We do what is right.*

*Excellence: We never stop learning and improving.*

*Courage: We think and act boldly.*

*Together: We respect each other and draw strength from our differences.*

*For Better: We do what matters.*

Outlined in [KPMG's Global Code of Conduct](#) ("the Code") are the responsibilities all KPMG personnel have to each other, the public and our clients. It shows how our Values inspire our greatest aspirations and guide all of our behaviors and actions. It defines what it means to work at and be part of KPMG, as well as our individual and collective responsibilities.

Everyone at KPMG is held accountable for behaviour consistent with the Code and is required to confirm their compliance with it. All KPMG personnel are required to take annual training covering the Code. We are committed to holding ourselves accountable for behaving in a way that is consistent with the Code. Individuals are encouraged to speak up if they see something that makes them uncomfortable or that is not in compliance with the Code, or our Values.

Everyone at KPMG is required to report any activity that could potentially be illegal or in violation of our Values, KPMG policies, applicable laws, regulations or professional standards.

To safeguard this principle of holding each other accountable, each KPMG firm is required to establish, communicate and maintain clearly defined channels to allow KPMG personnel and third parties to make inquiries about, raise concerns in relation to, provide feedback on, and notify, reportable matters, without fear of reprisal, in accordance with applicable law or regulation.

The KPMG International hotline is a further mechanism for KPMG personnel, clients and other third parties to confidentially report concerns they have relating to certain areas of activity by KPMG International, activities of KPMG firms or KPMG personnel. We take reports received by the International hotline seriously, and for each of them we respond, and take appropriate action.

All KPMG firms and personnel are prohibited from retaliating against individuals who have the courage to speak up in good faith. Retaliation is a serious violation of the Code, and any person who takes retaliatory action will be subject to their firm's disciplinary policy.

The Global People Survey provides KPMG Limited leadership and KPMG International leadership with results related to upholding the KPMG Values. KPMG Limited and KPMG International monitor the results and take appropriate actions to communicate and respond to any findings.

### 2.1.2 System of quality management

#### Overview

Audit quality is foundational to instilling confidence and public trust in the capital markets and it remains our highest priority.

Tone at the top, leadership, and a clear set of Values and conduct are essential to set the framework for quality. The quality of each audit rests on a foundational system of quality management.

Across our global organization we have strengthened the consistency and robustness of our system of quality management that enables compliance with the International System on Quality Management Standard 1 (ISQM 1), issued by the International Auditing and Assurance Standards Board (IAASB), which will take effect on 15 December 2022. We consider this a transformational and fundamental change for KPMG firms.

Our globally consistent approach to ISQM 1 drives the robustness of our responses to the risks of achieving the quality objectives set out in the standard. For each component in the standard, we have established minimum required quality objectives, quality risks and responses for all KPMG firms.

KPMG International has established a risk assessment process required to be used by KPMG firms in identifying additional firm specific quality objectives, quality risks, and responses and requirements for testing and evaluation of their system of quality management together with guidance, tools and templates to support the consistent implementation of ISQM 1 across KPMG firms.

The new requirements apply to all KPMG firms within our global organization. The objective of this centralized approach is to drive the consistency, robustness, and accountability of responses within KPMG firm's processes.

In preparation for ISQM 1, we adopted a new Global Quality Framework to better outline how we deliver quality at KPMG, and how everyone at KPMG is accountable to its delivery. The principle of 'Perform quality engagements' sits at the core along with our commitment to continually monitor and remediate our processes as necessary.



The Global Quality Framework also meets the requirements of the current International Standards on Quality Control (ISQC 1), issued by the International Auditing and Assurance Standards Board (IAASB) and the International Code of Ethics for Professional Accountants (including International Independence Standards) issued by the International Ethics Standards Board for Accountants (IESBA), which apply to professional services firms that perform audits of financial statements.

This Transparency Report summarizes KPMG's approach to audit quality, it may also be useful for stakeholders interested in member firms' Tax and Advisory services, as many KPMG quality control procedures and processes are cross-functional and apply equally to all services offered.

#### 2.1.3 Leadership responsibilities for quality and risk management

KPMG Limited demonstrates commitment to integrity, quality, objectivity, independence, and ethics, and communicates our focus on quality to clients, stakeholders, and society. Our leadership plays a critical role in setting the right tone and leading by example — demonstrating an unwavering commitment to the highest standards of professional excellence and championing and supporting major initiatives.

Our leadership team is committed to building a culture based on integrity, quality, objectivity, independence, and ethics, demonstrated through their actions.

KPMG Limited is required to seek input from the chair of the relevant Global Steering Group or his/her delegate on the performance of certain leaders within KPMG Limited whose role most closely aligns with the activities of the Global Steering Group. Input is sought as part of the annual performance process and is based on an assessment of the leader's performance, which includes matters of public interest, audit quality and risk management activities.

The following individuals have leadership responsibilities for quality and risk management at KPMG Limited.

#### Managing Director

In accordance with the principles in ISQC 1, our Managing Director has assumed ultimate responsibility for KPMG Limited's system of quality management. Details of some of the measures that he and the rest of the Board have taken to ensure that a culture of quality prevails within KPMG Limited are set out in section 2.1.2 'System of quality control'.

#### Risk Management Partner (RMP)

The Risk Management Partner (RMP) is responsible for the direction and execution of risk, compliance, and quality control in KPMG Limited. The RMP is a member of KPMG Limited's Executive Committee and has a direct reporting line

to the Managing Director. The RMP consults, as appropriate, with the Managing Director, the Regional Risk Management Partner, Global Quality & Risk Management resources, and the general counsel or external counsel.

The fact that the role is a position held by the Executive Committee, and seniority of the reporting lines, underlines the importance that the firm places on risk and quality issues.

### **Ethics and Independence Partner (EIP)**

The Ethics and Independence Partner has primary responsibility for the direction and execution of ethics and independence policies and procedures in KPMG Limited and reports on ethics and independence issues to the RMP of KPMG limited.

### **The Audit, Tax and Advisory functions – Function Heads**

The three heads of the client service functions (Audit, Tax and Advisory) are accountable to the Managing Director for the quality of service delivered in their respective functions. They are responsible for the execution of the risk management and quality assurance procedures for their specific functions within the framework set by the Risk Management Partner. These procedures make it clear that, at the engagement level, risk management and quality control is ultimately the responsibility of all professionals in the firm.

KPMG Limited Head of Audit is responsible for the effective management and control of the Audit Function. This includes:

- Setting a strong tone and culture supporting audit quality through communication, engagement support and commitment to the highest standards of professional excellence, including professional scepticism, objectivity, and ethics and integrity;
- Developing and implementing an audit strategy which is aligned with KPMG Limited's audit quality requirements; and
- Working with the Risk Management Partner to monitor and address audit quality and risk matters as they relate to the Audit practice.

### **Audit Leadership Team**

The Audit Leadership Team has regular discussions to agree actions about current and emerging audit quality issues arising from external and internal quality review processes, queries being raised by engagement teams, root cause analysis procedures and other quality matters identified from a variety of sources.

For more complex issues (which might require amendments to KPMG's global audit methodology or audit tools) these will be raised with the KPMG International Global Audit groups for consideration and potential development of solutions by the



KPMG Global Solutions Group (KGSG) and the International Standards Group (ISG). For more information about the KGSG and the ISG refer to section 8.1.2 of the member firm transparency report.

## **2.2 Clearly articulated strategy focused on quality, consistency, trust and growth**

### **2.2.1 Our business**

KPMG Limited is a professional services firm that delivers Audit, Tax and Advisory services. We operate out of six offices across Cyprus and had an average of 836 partners and employees in the year ended 31 December 2022 (2021: 846). Our audit services in Cyprus are delivered through KPMG Limited. Full details of the services offered by KPMG Limited can be found on our website:

[www.kpmg.com.cy](http://www.kpmg.com.cy)

### **2.2.2 Our strategy**

Our strategy is set by the Board of KPMG Limited and demonstrates a commitment to quality and trust. Our focus is to invest significantly in priorities that form part of a global strategy execution.

## **2.3 Defined accountabilities, roles and responsibilities, including for leadership**

### **2.3.1 Legal structure**

KPMG Limited and all other KPMG firms are party to membership and associated documents, the key impact of which is that all KPMG member firms in the KPMG global organization are members in, or have other legal connections to, KPMG International Limited, an English private company limited by guarantee. KPMG International Limited acts as the coordinating entity for the overall benefit of the KPMG member firms. It does not provide professional services to clients. Professional services to clients are exclusively provided by member firms.



## Living our culture and Values continued

Further detail on the revised legal and governance arrangements for the KPMG global organization can be found in section 'Governance and leadership' of the [2022 KPMG International Transparency Report](#).

KPMG International Limited and the KPMG member firms are not a global partnership, single firm, multinational corporation, joint venture, or in a principal or agent relationship or partnership with each other. No member firm has any authority to obligate or bind KPMG International Limited, any of its related entities or any other member firm vis-à-vis third parties, nor does KPMG International Limited or any of its related entities have any such authority to obligate or bind any member firm. KPMG Limited is part of the KPMG global organization of professional services firms providing Audit, Tax, and Advisory services to a wide variety of public and private sector organizations. The KPMG organization structure is designed to support consistency of service quality and adherence to agreed Values wherever its member firms operate.

KPMG Limited is a private company limited by shares registered in Cyprus under registration number HE 132822 with its registered office at 14 Esperidon street, 1087, Nicosia, Cyprus. It is ultimately owned by its Board Members who, in practice, are commonly referred to as partners.

The related entities of KPMG Cyprus as at 31 December 2022 are:

| Company name                      | Principal Activity         |
|-----------------------------------|----------------------------|
| KPMG Limited                      | Professional Services      |
| KPMG Properties Limited           | Holding of property        |
| KPMG Specialized Services Limited | Professional Services      |
| KPMG Investments Ltd              | Investment holding company |
| KPMG MLS Services Limited         | Professional Services      |

### Theodorides, Georgiou, Iacovou LLC

Theodorides, Georgiou, Iacovou LLC is a KPMG Legal network practice in Cyprus operating under the brand name of KPMG Law. It is an independently owned and managed private limited liability lawyers entity registered in Cyprus, regulated by the Cyprus Legal Council and the Cyprus Bar Association.

### 2.3.2 Name, ownership and legal relationships

KPMG is the registered trademark of KPMG International and is the name by which the member firms are commonly known. The rights of member firms to use the KPMG name

and marks are contained within agreements with KPMG International.

Member firms are generally locally owned and managed. Each member firm is responsible for its own obligations and liabilities. KPMG International and other member firms are not responsible for a member firm's obligations or liabilities.

Member firms may consist of more than one separate legal entity. If this is the case, each separate legal entity will be responsible only for its own obligations and liabilities, unless it has expressly agreed otherwise.

### 2.3.3 Responsibilities and obligations of member firms

Pursuant to their membership agreements with KPMG International, member firms are required to comply with KPMG International's policies, procedures and regulations including quality standards governing how they operate and how they provide services to clients to compete effectively. This includes having a firm structure that ensures continuity and stability and being able to adopt global strategies, share resources (incoming and outgoing), service multi-national clients, manage risk, and deploy global methodologies and tools.

Each member firm takes responsibility for its management and the quality of its work.

Member firms commit to a common set of KPMG Values (see section *Fostering the right culture, starting with tone at the top*).

KPMG International's activities are funded by an annual payment paid to it by member firms. The basis for calculating such amounts is approved by the Global Board and consistently applied to the member firms. A firm's status as a KPMG member firm and its participation in the KPMG organization may be terminated if, among other things, it has not complied with the policies, procedures and regulations set by KPMG International or any of its other obligations owed to KPMG International.

## 2.4 Overseen using robust governance structures

### 2.4.1 Governance structure

KPMG Limited applies high standards of corporate governance.

#### *The Board*

The Chairman chairs the Board ensuring that the Board members receive accurate, timely and clear information and ensuring effective communication and relationships with the members at large. The current chairman Michael Antoniadis and Managing Partner Christos Vasiliou, were appointed on 1 January 2022 following a competitive election campaign and confidential vote of the members.



The principal governance and oversight body of KPMG Limited is the Board of Directors which provides leadership to the organization and is responsible for our long-term growth and sustainability, setting our strategy and overseeing its implementation, monitoring performance against our business plan and protecting and enhancing the KPMG brand.

The Board consists of 44 members, including the Chairman, the Managing Director, and 42 additional members. The constitution of the Board is as determined by the KPMG Partnership Agreement. The Board meets from time to time to undertake certain statutory duties for KPMG Limited including approving the annual accounts. The Board met 10 times in the year to 31 December 2022.

The Executive Committee deals with key aspects of governance and reports to the Board. Details about the role and responsibilities and composition of the Executive Committee are set out below.

### ***The Executive Committee***

The Executive Committee is responsible for management of the day-to-day activities of KPMG Limited, recommending policy to the Board and developing the business plan within the overall strategy set by the Board, together with its subsequent implementation. It deals with operational matters affecting the firm, including monitoring operating and financial performance, budgets, new business proposals, marketing, technology development, recruitment, retention and general remuneration, prioritization and allocation of resources and investments and managing the risk profile of KPMG Limited.

The Executive Committee members are all KPMG Limited Partners and are appointed by the Board of Directors. The members of the Executive Committee during 2022 were as follows:

- Christos Vasiliou (Managing Director),
- Michael Antoniadis (Chairman),
- Sylvia Loizides (Head of Audit),
- George Markides (Head of Tax),
- Lazarou Marios (Head of Advisory)
- Constantinos Kallis (Head of Quality & Risk Management),
- Michael Halios,
- Paris Elia,
- Panayiotis Peleties,
- Maria Papacosta,
- Christoforos Anayiotos,
- Costas Markides.

Full details of the Executive Committee for KPMG Limited, including their biographies and photos are set out in *Appendix 2*.

The Executive Committee aims to meet at least monthly and during the year to 31 December 2022 it met formally 15 times either face-to face or via video link/conference call supplemented by frequent additional telephone calls and ad hoc meetings.

# 03

## Applying expertise and knowledge

We are committed to continuing to build on our technical expertise and knowledge recognizing its fundamental role in delivering quality audits.

### 3.1 Methodology aligned with professional standards, laws and regulations

#### 3.1.1 Consistent audit and assurance methodology and tools

##### Bringing consistency through our methodology

Our audit and assurance methodology, tools and guidance enable a consistent approach to planning, performing and documenting audit procedures over key accounting processes:

- Globally consistent and fully compliant with the applicable standards, including International Standards on Auditing (ISA), Public Company Accounting Oversight Board (PCAOB) and the American Institute of CPAs (AICPA) and are supplemented to comply with local auditing standards and regulatory or statutory requirements by KPMG firms;
- Inclusive of KPMG methodology interpretations that drive consistency in areas where the applicable standards are not prescriptive in the approach to be followed;
- Centered on identifying risk, focusing on risks of material misstatements and the necessary audit response;
- Made available to all KPMG audit and assurance professionals and required to be used, where necessary;
- Applied even where local auditing standards may be less demanding than the ISAs; and
- Based on the requirements of the International Standard on Assurance Engagements (ISAE) and aligned to assurance products in response to the growth of ESG reporting.

The KPMG audit methodology is set out in the KPMG Audit Manual (for use with eAuditIT) and the KPMG Audit Execution Guide (for use with the KPMG Clara workflows) and includes KPMG interpretation of how to apply ISAs, which we believe enhance audit quality.

The KPMG Assurance Manuals provide the requirements and guidance for a consistent approach to performing assurance engagements, in accordance with the International Standard on Assurance Engagements (ISAE) 3000, Assurance Engagements Other than Audits or Reviews of Historical Financial Information. The audit and assurance methodologies

emphasize applying appropriate professional skepticism in the execution of procedures and require compliance with relevant ethical requirements, including independence.

Enhancements to the audit and assurance methodologies, guidance and tools are made regularly to maintain compliance with the applicable standards and address emerging auditing and assurance areas of focus and audit quality results (internal and external). For example, the current focus on ESG assurance is driving updates to our assurance methodologies, tools and guidance.

KPMG firms may add local requirements and/or guidance to the globally prescribed minimum requirements in the KPMG Audit Manual, the KPMG Audit Execution Guide and the KPMG Assurance Manuals to comply with additional local professional, legal, or regulatory requirements.

### 3.2 Deep technical expertise and knowledge

#### 3.2.1 Access to specialist networks

Specialist expertise is an increasingly important part of the modern audit. KPMG Limited engagement teams have access to a network of KPMG specialists – either within their firm or in other KPMG firms. These specialists receive the training they need to ensure they have the competencies, capabilities and objectivity to appropriately fulfil their role on our audits. They also receive a global annual update on global quality performance issues.

The need for specialists to be assigned to an audit engagement in areas such as information, technology, tax, treasury, actuarial, forensic and valuations is considered as part of the audit engagement acceptance and continuance process, as well as during the planning and conduct of the engagement.

#### 3.2.2 Our commitment to audit quality during significant external events

Significant external events such as the conflict in Ukraine, the COVID-19 pandemic and the emerging impacts of climate change have contributed to rising inflation and interest rates, supply chain disruption and increased global economic uncertainty.

Matters such as going concern, asset impairments and valuations will likely require careful judgment as organizations deal with elevated uncertainty and market volatility. KPMG firms' role as auditors is to evaluate these judgments.



We maintain an [online financial reporting resource center](#) to assist financial statement preparers and other stakeholders in understanding the potential accounting and disclosure implications of significant external events.

KPMG International issues extensive guidance to assist engagement teams in addressing the financial reporting, auditing and reporting related matters arising from the impacts of these external events, addressing the potential implications for going concern, asset impairments, valuations and related disclosures, materiality, risk assessment, group audits, subsequent events, audit evidence and communications with those charged with governance.

KPMG's guidance is continually updated as new significant accounting, auditing, and reporting issues emerge.

KPMG is a technology-enabled organization, with technical accounting and auditing resources, guidance and audit platforms and tools available electronically, which enable

our engagement teams to effectively operate in office and remote working environments.

### 3.3 Quality and risk management manual

KPMG International has quality and risk management policies that apply to all member firms. These are included in KPMG's Global Quality & Risk Management Manual (GQ&RM Manual) which applies to all KPMG firms and all KPMG personnel. KPMG Limited is required to establish and maintain a system of quality management and design, implement, and test the operating effectiveness of quality controls. maintain a system of quality control and design, implement, and test the operating effectiveness of quality controls.



# 04

## Embracing digital technology

At KPMG, we are committed to serving the public interest and creating value through continuous innovation. We are transforming the audit experience for our professionals and clients by leveraging the data and insights of leading technologies and enhancing audit quality by increasing our ability to focus on the issues that matter.

### 4.1 Intelligent, standards-driven audit workflows

All KPMG Limited professionals are expected to adhere to KPMG International and KPMG Limited policies and procedures, including independence policies, and are provided with a range of tools and guidance to support them in meeting these expectations. The KPMG Limited policies and procedures set for audit engagements incorporate the relevant requirements of accounting, auditing, ethical and quality control standards, and other relevant laws and regulations.

#### 4.1.1 Evolving our audit workflows

We recognize that to deliver quality audits, we need to continually evolve and develop our technology solutions to keep pace with today's digital world.

That is why we reimagined our audit platform, workflows and methodology to provide enhanced consistency and support to our audit engagement teams, deliver detailed insights, and future-proof our systems for the expected continued development of new technologies, such as robotic process automation, machine learning and cognitive technologies.

The release of the KPMG Clara workflows and revised audit methodology is an important milestone in KPMG's journey to innovate, digitalize and transform the audit experience. It is a significant investment that underlines our commitment to audit quality, consistency and innovation.

### 4.2 KPMG Clara

KPMG Clara is our smart and intuitive technology platform that is driving globally consistent audit execution. As a fully integrated, scalable, cloud-based platform, it enables the enhanced audit methodology through a data-enabled workflow.

The platform integrates new and emerging technologies, with advanced capabilities that leverage data science, audit automation, and data visualization.

The digital audit is increasingly integral to how KPMG member firms perform quality audits and interact with their clients. Policies and guidance are in place to establish and maintain appropriate processes and controls regarding the development, evaluation and testing, deployment and support of technology in our audits.

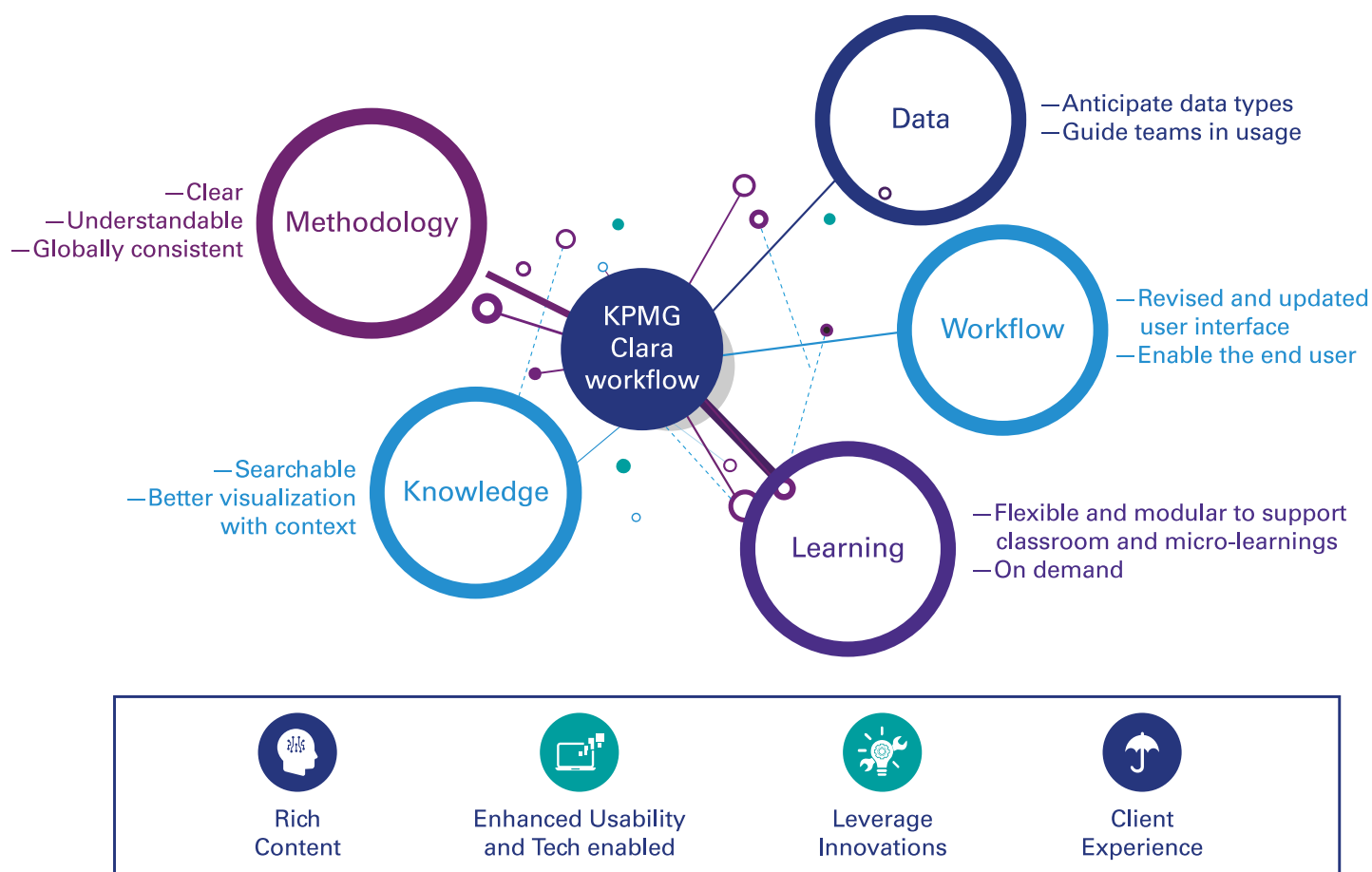
KPMG Clara is helping auditors see meaningful patterns across a business, whether conducting risk assessment, tracing transactions through a complex revenue process, or simply adding up the accounts. Examples of current capabilities include:

- Analysis of account balances and journal entry data;
- Automation of 'period on period' balances comparison and 'time series' evolution information;
- Analysis of sub-ledger, transactional data over certain business processes and accounts; and
- Integration (where applicable) with industry-specific digital procedures and solutions.

#### *Our vision of the future*

KPMG Clara was developed to be a foundational technology platform for KPMG to deliver audit quality. It delivers this by being the base technology providing new capabilities in a globally consistent way, enabling the audit workflows and providing a fully digital experience for our audit professionals.

The KPMG Clara platform evolves as technologies such as artificial intelligence, blockchain and cognitive capabilities transform how audits are delivered.



### KPMG Clara workflows

Our previous platform, eAuditIT, is being replaced with new workflows embedded with our revised audit methodology and enabled by the KPMG Clara smart audit platform. Phased full deployment of the KPMG Clara workflows (with the exception of very small and less complex national audits) commenced globally in 2020 with planned completion of full global transition for the 2022 fiscal period-end audits. Global transition for less complex national audits, leveraging enhanced scaling capability has commenced in 2022 and will be completed by 2023.

The web-enabled KPMG Clara workflows guide audit teams through a series of steps in a logical sequence aligned to the applicable professional auditing standards with a clear display of information, visuals, and guidance available, and with embedded advanced digital audit and project management capabilities. The workflows and revised audit methodologies are scalable – adjusting the requirements to the size and complexity of the audit engagement. KPMG Clara workflows significantly enhance the execution of an audit by KPMG professionals and drive audit quality and global consistency.

Using data mining and tracking of relevant engagement level data indicators, the KPMG Clara workflows can also facilitate monitoring of audit execution at the engagement level.

We continue to enhance the KPMG Clara smart audit platform to accommodate evolving security demands, further integrate existing audit applications, and develop new capabilities to digitalize additional audit processes.

#### 4.2.1 Client confidentiality, information security, and data privacy

The importance of maintaining client confidentiality is emphasized through a variety of mechanisms, including the KPMG Global and KPMG Limited Code of Conduct.

We have policies on information security, confidentiality, personal information and data privacy. We have a document retention policy concerning the retention period for audit documentation and other records relevant to an engagement in accordance with applicable laws, regulations, and professional standards.

KPMG provides training on confidentiality, information protection and data privacy requirements to all KPMG Limited personnel annually.



# 5

## Nurturing diverse skilled teams

Our people make the real difference and are instrumental in shaping the future of audit at KPMG. We put quality and integrity at the core of our audit practice. Our auditors have diverse skills and capabilities to address complex problems.

### 5.1 Recruiting appropriately qualified and skilled people, including specialists, with diversity of perspective and experience

One of the key drivers of quality is ensuring that KPMG professionals have the appropriate skills and experience, motivation, and purpose to deliver high-quality audits. This requires the right recruitment, development, reward, promotion, retention, and assignment of professionals.

#### 5.1.1 Recruitment

KPMG Limited has invested in understanding how we can attract the talent we need now and in the future across the organisation. Attraction, engagement, and retention of our talent is a critical component of our overall organisational success. Our people's experience at KPMG is key to unlocking their potential, driving their motivation to make an impact for clients, colleagues and other stakeholders and creating an inclusive environment.

Our recruitment strategy is focused on attracting entry-level talent from a broad talent base, including working with established universities, colleges and business schools, but also working with secondary schools, building relationships with a younger, diverse talent pool at an early age. KPMG Limited also recruits a significant number of experienced professionals.

All candidates apply through our online platform for the position of their interest. Our selection process may include application screening, game-based assessment tests and behaviour-based interviews which allow a fair recruitment process, ensuring that selected candidates have the appropriate characteristics and skill set needed. These leverage fair and job-related criteria to ensure that candidates possess the appropriate skills and experience to perform competently, are suitable and best placed for their roles.

KPMG Limited recruited 199 new people in the year ended 31 December 2022, where 92 of them were new graduates (2021: 97).

Where individuals are recruited for senior positions or personnel from government entities or regulators and of elected officials, a formal independence discussion is conducted with them by the Ethics and Independence Partner or a delegate. KPMG Limited does not accept any confidential information belonging to the candidate's former firm/employer.

#### 5.1.2 Inclusion, diversity & equity programs

KPMG Limited is committed to building a diverse and equitable firm that is inclusive to all.

Inclusion, diversity and equity (IDE) is core to our very existence – helping us build great teams with diverse views that represent the world we live in. It leads to better decision making, drives greater creativity and innovation, and encourages us to stand up, live our Values, and do what is right.

We recognize our firms' global position working with clients around the world affords us a privileged place. With that comes an opportunity and responsibility to achieve more and push for a fairer, more equitable society.

Our KPMG Global Inclusion, Diversity & Equity Collective Action Plan outlines the actions that are necessary to advance inclusion, diversity and equity at KPMG Limited and across all KPMG firms.



## Nurturing diverse skilled teams continued

For more about Inclusion & Diversity at KPMG read [here](#).

### 5.1.3 Reward and Promotion

#### **Reward**

KPMG Limited has compensation and promotion policies that are informed by market data, clear, simple, and linked to the performance review process. This helps our partners and employees understand what is expected of them, and what they can expect to receive in return. The connection between performance and reward is achieved through calibration/moderation meetings where relative performance across a peer group is discussed and used to inform reward decisions.

Reward decisions are based on consideration of both individual and firm performance.

The extent to which our people feel their performance has been reflected in their reward is measured through the annual Global People Survey, with action plans developed as required.

#### **Promotion**

The results of performance evaluations directly affect the promotion and remuneration of partners and employees and, in some cases, their continued association with KPMG.

### 5.2 Assigning an appropriately qualified team

KPMG Limited has procedures in place to assign engagement partners and other professionals to a specific engagement on the basis of their skill sets, relevant professional and industry experience, and the nature of the assignment or engagement. Function heads are responsible for the partner assignment process. Key considerations include partner experience and capacity - based on an annual partner portfolio review - to perform the engagement taking into account the size, complexity and risk profile of the engagement and the type of support to be provided (i.e. the engagement team composition and specialist involvement).

Audit engagement partners are required to be satisfied that their engagement teams have appropriate competencies, training and capabilities, including time, to perform audit engagements in accordance with our audit methodology, professional standards, and applicable legal and regulatory requirements. This may include involving specialists from our own firm, other KPMG member firms or external experts.

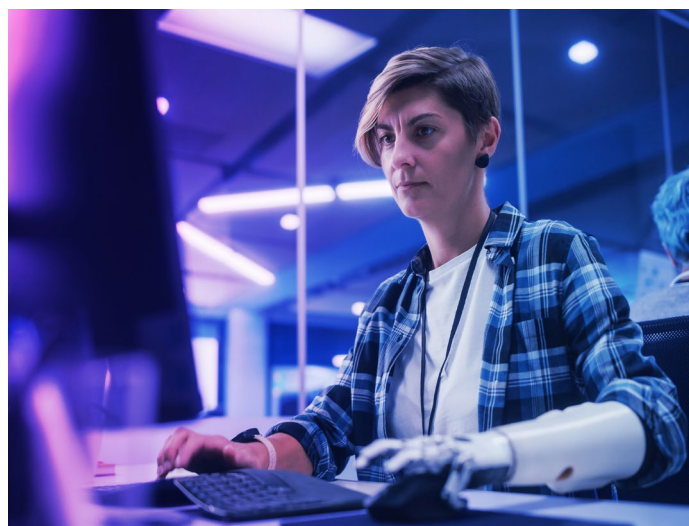
When considering the appropriate competence and capabilities expected of the engagement team as a whole, the engagement partner's considerations may include the following:

- Understanding of, and practical experience with, audit engagements of a similar nature and complexity through appropriate training and participation;
- Understanding of professional standards and legal and regulatory requirements;

- Appropriate technical skills, including those related to relevant information technology and specialized areas of accounting or auditing;
- Knowledge of relevant industries in which the client operates;
- Ability to apply professional judgment;
- Understanding of KPMG Limited's quality control policies and procedures; and
- Quality Performance Review (QPR) results and results of regulatory inspections.

### 5.3 Investing in data centric skills – including data mining, analysis and visualization

KPMG is strategically investing in our talent pipeline by partnering with world-class institutions to sustain our strong leadership, while also looking forward to cultivating the skills and capabilities that will be needed in the future. We are recruiting and training professionals who specialize in software, cloud capabilities, and artificial intelligence and who can bring leading technology capabilities to our smart audit platform. We provide training on a wide range of technologies to ensure that field professionals not only meet the highest professional standards but are also upskilled in new technology. With this approach we are bringing together the right people with the right skills and the right technology to perform exceptional audits.



### 5.4 Focused learning and development on technical expertise, professional acumen, and leadership skills

#### **5.4.1 Commitment to technical excellence and quality service delivery**

All KPMG Limited professionals are provided with the technical training and support they need to perform their

## Nurturing diverse skilled teams continued

roles. This includes access to internal specialists and the professional practice department for consultation. Where the right resource is not available within KPMG Limited, the firm accesses a network of highly skilled KPMG professionals in other KPMG firms.

At the same time, audit policies require all KPMG audit professionals to have the appropriate knowledge and experience for their assigned engagements.

### 5.4.2 Lifetime learning strategy

#### **Formal training**

Annual training priorities for development and delivery are identified by the Audit Learning and Development groups at global, regional and, where applicable, KPMG firm level.

Mandatory learning requirements for audit professionals across the KPMG organization are established annually. Training is delivered using a blend of learning approaches and performance support.

#### **Mentoring and on the job training**

Learning is not confined to a single approach — rich learning experiences are available when needed through coaching and just-in-time learning, and aligned with job specific role profiles and learning paths.

Mentoring and on-the-job experience play key roles in developing the personal qualities important for a successful career in auditing, including professional judgment, technical excellence and instinct.

We support a coaching culture throughout KPMG as part of enabling KPMG professionals to achieve their full potential and instil that every team member is responsible for building the capacity of the team, coaching other team members and sharing experiences.

### 5.4.3 Licensing and mandatory requirements for IFRS® Standards and US GAAP engagements

All KPMG Limited professionals are required to comply with applicable professional licence rules and satisfy the Continuing Professional Development requirements in the jurisdiction where they practice. KPMG Limited policies and procedures are designed to facilitate compliance with licence requirements. We are responsible for ensuring that audit professionals working on engagements have appropriate audit, accounting and industry knowledge, and experience in the local predominant financial reporting framework – IFRS.

#### **Mandatory requirements – IFRS Standards and US GAAP engagements**

In addition, KPMG has specific requirements for partners, managers and Engagement Quality Control (EQC) reviewers working on IFRS Standards engagements in countries where

IFRS Standards are not the predominant financial reporting framework.

Similar policies apply to engagements performed outside the US to report on financial statements or financial information prepared in accordance with US GAAP and/or audited in accordance with US auditing standards, including reporting on the effectiveness of the entity's internal control over financial reporting (ICOFR). These require that at a minimum, all partners, managers and, if appointed, the EQC reviewers assigned to the engagement have completed relevant training and that the engagement team, collectively, has sufficient experience to perform the engagement or has implemented appropriate safeguards to address any shortfalls.

## 5.5 Recognizing quality

### 5.5.1 Personal development

KPMG Limited's approach to performance development, 'Open Performance Development', is built around the 'Everyone a Leader' performance principles, and includes:

- Global role profiles (including role profiles specific to audit quality accountabilities and responsibilities);
- A goal library (including audit quality content); and
- Standardized review forms (with provision for audit quality ratings).

Open Performance Development is linked to the KPMG Values and designed to articulate what is required for success — both individually and collectively. We know that by being clear and consistent about the behaviors we expect and rewarding those who demonstrate them, we will continue to drive a relentless focus on audit quality.

At the same time, KPMG is driving a shift in our performance-driven culture, supported by and enacted through leading technology that allows us to embed audit quality into the assessment of performance and the decisions around reward, as well as drive consistency across the global organization.

KPMG Limited considers quality and compliance metrics in assessing the overall evaluation, promotion, and remuneration of partners [and directors and managers]. These evaluations are conducted by performance managers and partners who are able to assess performance.

KPMG Limited's development approach as well as the on-the-job training offered, create an environment where trainees can flourish. Every year, KPMG Limited has a great number of trainees who complete their professional qualification exams and become qualified professionals (2022: 43 people) while at the same time proudly announces the achievements, both worldwide and nationwide, of its trainees regarding their professional examination results.



# Associating with the right clients and engagements

Rigorous global client and engagement acceptance and continuance policies are vital to being able to provide high-quality professional services.

## 6.1 Following the client and engagement acceptance and continuance policies

The KPMG client and engagement acceptance and continuance policies and processes are designed to identify and evaluate potential risks prior to accepting or continuing a client relationship or performing a specific engagement.

KPMG firms are required to evaluate whether to accept or continue a client relationship or perform a specific engagement. Where client/engagement acceptance (or continuance) decisions pose significant risks, additional approvals are required.

## 6.2 Accepting appropriate clients and engagements

### 6.2.1 Client evaluation

KPMG Limited undertakes an evaluation of every prospective client.

This involves obtaining sufficient information about the prospective client, its key management and significant beneficial owners and then properly analyzing the information to be able to make an informed acceptance decision. This evaluation includes an assessment of the client's risk profile and obtaining background information on the client, its key management, directors and owners. If necessary, we obtain additional information required to satisfy applicable legal and regulatory requirements.

### 6.2.2 Engagement evaluation

Each prospective engagement is also evaluated to identify potential risks in relation to the engagement. A range of factors are considered as part of this evaluation, including potential independence and conflict of interest issues (using Sentinel™, KPMG's conflicts and independence checking system), intended purpose and use of engagement deliverables, public perception, whether the services would be unethical or inconsistent with our Values, as well as factors specific to the type of engagement. For audit services, these include the competence of the client's financial management

team and the skills and experience of KPMG professionals assigned to staff the engagement. The evaluation is made in consultation with other senior KPMG Limited personnel and includes additional reviews as required.

Where audit services are to be provided for the first time, the prospective engagement team is required to perform additional independence evaluation procedures, including a review of any non-audit services provided to the client and of other relevant business, financial and personal relationships.

Similar independence evaluations are performed when an existing audit client becomes a public interest entity or additional independence restrictions apply following a change in the circumstances of the client.

Depending on the overall risk assessment of the prospective client and engagement, additional safeguards may be introduced to help mitigate the identified risks. Any potential independence or conflict of interest issues are required to be documented and resolved prior to acceptance.

A prospective client or engagement will be declined if a potential independence or conflict issue cannot be resolved satisfactorily in accordance with professional standards and our policies, or if there are other quality and risk issues that cannot be appropriately mitigated.

### 6.2.3 Continuance process

KPMG Limited undertakes an annual re-evaluation of all its audit clients. The re-evaluation identifies any risks in relation to continuing association and any mitigating procedures that need to be put in place (this may include the assignment of additional professionals such as an Engagement Quality Control (EQC) reviewer or the need to involve additional specialists on the audit).

Recurring or long running non-audit engagements are also subject to periodic re-evaluation.

In addition, clients and engagements are required to be re-evaluated if there is an indication that there may be a change to the risk profile, and as part of the continuous independence evaluation process, engagement teams are required to identify if there have been any changes to previously identified threats or if there are new threats to independence. The threats are then evaluated and, if not at an acceptable level, are eliminated or appropriate safeguards are applied to reduce the threats to an acceptable level.

### 6.2.4 Withdrawal process

Where KPMG Limited comes to a preliminary conclusion that indicates that we should withdraw from an engagement or client relationship, we consult internally and identify any required legal, professional and regulatory responsibilities. We also communicate as necessary with those charged with governance and any other appropriate authority.

### 6.3 Managed portfolio of clients

KPMG Limited leadership appoints engagement partners who have the appropriate competence, capabilities, time and authority to perform their role for each engagement.

They review each audit partner's client portfolio in individual discussions with the audit partner. The reviews consider the industry, nature and risk of the client portfolio as a whole along with the competence, capabilities and capacity of the partner and wider team to deliver a quality audit for every client.



# Being independent and ethical

Auditor independence is a cornerstone of international professional standards and regulatory requirements.

## 7.1 Acting with integrity and living our Values

KPMG International's detailed independence policies and procedures, incorporate the IESBA Code of Ethics. These are set out in the KPMG GORMM which applies to all KPMG firms. Automated tools, which are required to be used for every prospective engagement to identify potential independence and conflict of interest issues, facilitate compliance with these requirements.

These policies are supplemented by other policies and processes to ensure compliance with local requirements. These policies and processes cover areas such as firm independence (covering, for example, treasury and procurement functions), personal independence, firm financial relationships, employment relationships, partner rotation and approval of audit and non-audit services.

The Head of the Global Independence Group is supported by a core team of specialists to help ensure that robust and consistent independence policies and procedures are in place at KPMG firms, and that tools are available to help the firms and their personnel to comply with these requirements.

KPMG Limited has a designated Ethics and Independence Partner (EIP) who has primary responsibility for the direction and execution of ethics and independence policies and procedures in KPMG Limited. The EIP is responsible for communicating and implementing KPMG International policies and procedures and ensuring that local independence policies and procedures are established and effectively implemented when they are more stringent than the KPMG International requirements. The EIP fulfils this responsibility through:

- Implementing/monitoring the ethics and independence quality control process and structure within the firm;
- Approving/appointing partners responsible for ethics and independence within the firm;
- Overseeing the processes related to the evaluation of specific independence threats in connection with clients and prospective clients;
- Participating in the development and delivery of training materials;

- Implementing procedures to address non-compliance; and
- Overseeing the disciplinary process for ethics and independence matters.

Amendments to KPMG International's ethics and independence policies are included in regular quality and risk communications with all KPMG firms. KPMG firms are required to implement changes as specified in the communications, and this is checked through the internal monitoring programs described in section 11.1.2.

KPMG Limited partners and employees are required to consult with the EIP on certain matters as defined in the GORMM. The EIP may also be required to consult with the Global Independence Group, depending upon the facts and circumstances.

## 7.2 Maintaining an objective, independent and ethical mindset, in line with our code of conduct and policies

### 7.2.1 Personal financial independence

KPMG International policies require that KPMG firms and KPMG professionals are free from prohibited financial interests in, and prohibited financial relationships with, KPMG firm audit and assurance clients (by definition, 'audit client' includes its related entities or affiliates), their management, directors, and, where required, significant owners. All KPMG partners — irrespective of their firm or function — are generally prohibited from owning securities of any audit client of any KPMG firm.

KPMG firms use a web-based independence compliance system (KICS) to assist KPMG professionals in complying with personal independence investment policies. This system contains an inventory of publicly available investments and provides a tracking mechanism for required users to report acquisitions and disposals of their financial interests. The system facilitates monitoring by identifying and reporting impermissible investments and other non-compliant activity (i.e. late reporting of an investment acquisition).

All partners and manager grade or above client-facing employees are required to use the KICS system prior to entering into an investment to identify whether they are permitted to do so. They are also required to maintain



## Being independent and ethical continued

a record of all of their investments in publicly available funds and securities registered on recognized or regulated exchanges in KICS, which automatically notifies them if any investment subsequently becomes restricted. Newly restricted investments are required to be disposed of within five business days of the notification. KPMG monitors partner and manager compliance with this requirement as part of our program of independence compliance audits of professionals. The Global Independence Group provides guidance and required procedures relating to the audit and inspection by KPMG firms of personal compliance with the KPMG independence policies. This includes sample criteria including the minimum number of professionals to be audited annually.

In 2022, 14 partners and employees were subject to these audits (this includes approximately 11% of our partners).

### 7.2.2 Employment relationships

Any KPMG Limited professional providing services to an audit or assurance client irrespective of function is required to notify the firm EIP if they intend to enter into employment negotiations with that client. For partners, this requirement extends to any audit client of any KPMG firm that is a public interest entity.

Former members of the audit or assurance team or former partners of KPMG Limited are prohibited from joining an audit or assurance client in certain roles unless they have disengaged from all significant connections to KPMG Limited, including payments which are not fixed and predetermined

and/or would be material to KPMG Limited and ceased participating in KPMG Limited business and professional activities.

Key audit partners and members of the chain of command for an audit client that is a public interest entity are subject to time restrictions (referred to as 'cooling-off' periods) that preclude them from joining that client in certain roles until a defined period has passed.

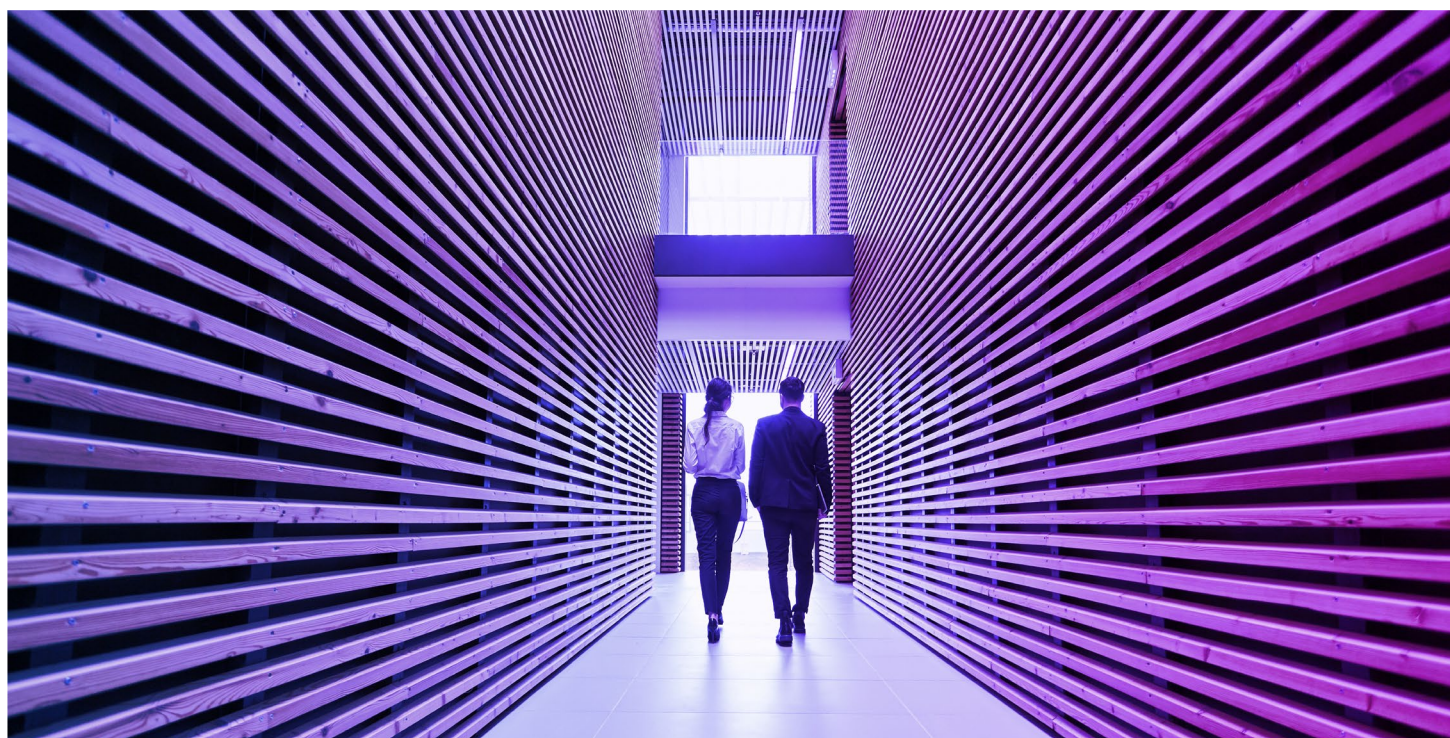
We communicate and monitor requirements in relation to employment and partnership of KPMG Limited professionals by audit and assurance clients.

### 7.2.3 Firm financial independence

KPMG firms are required to also be free from prohibited interests in, and prohibited relationships with, audit clients, their management, directors and, where required, significant owners.

In common with other KPMG firms, KPMG Limited uses KICS to record its own direct and material indirect investments in listed entities and funds (or similar investment vehicles) as well as in non-listed entities or funds. This includes investments held in associated pension and employee benefit plans.

Additionally, KPMG Limited is required to record in KICS all borrowing and capital financing relationships, as well as custodial, trust and brokerage accounts that hold member firm assets.



## Being independent and ethical continued

On an annual basis, KPMG Limited confirms compliance with independence requirements as part of the KPMG Quality & Compliance Evaluation program.

### 7.2.4 Business relationships/suppliers

KPMG Limited has policies and procedures in place that are designed to ensure its business relationships with audit and assurance clients are maintained in accordance with the IESBA Code of Ethics and other applicable independence requirements, such as those promulgated by the SEC.

These include establishing and maintaining a process to evaluate potential third-party arrangements (for example business alliances and joint working arrangements, marketing and public affairs activities) with particular regard to whether they have a bearing on auditor independence.

All prospective business relationships are evaluated to assess association risks and to identify potential auditor independence and conflicts of interest issues. A relationship involving a third-party service provider - that a member firm will use to assist with client engagements or other purposes - is also required to be evaluated to determine whether the third party has the competence to provide the relevant services. The individuals providing the services are required to confirm they understand and will comply with applicable ethics and independence requirements, and they are also required to complete ethics training. Third parties providing services to audit or assurance clients are required to complete independence training.

### 7.2.5 Business acquisitions, admissions and investments

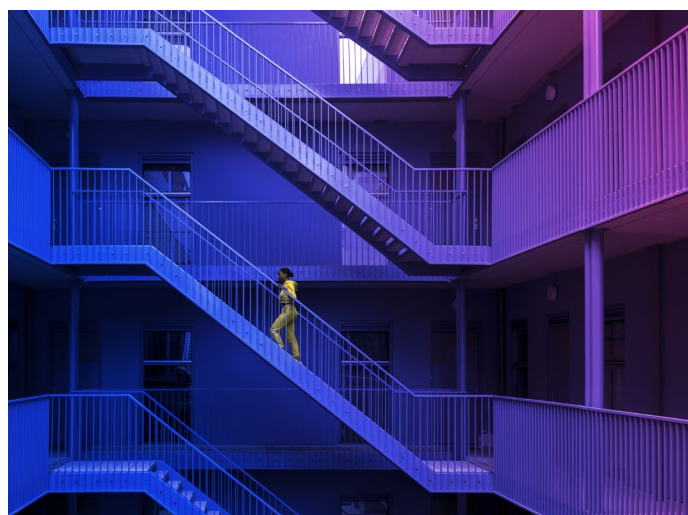
If KPMG Limited is in the process of considering the acquisition of, or investment in, a business, it is required to perform sufficient due diligence procedures on the prospective target to identify and address any potential independence and risk management issues prior to closing the transaction. Specific consultations with the Global Independence Group and Global Quality & Risk Management are required to enable independence and other issues to be addressed when integrating the business into KPMG Limited and the wider global organization.

### 7.2.6 Independence clearance process

In addition to the standard acceptance evaluation performed for every engagement, which includes an evaluation of independence, KPMG Limited follows specific procedures to identify and evaluate threats to independence related to prospective audit clients that are public interest entities; these procedures, also referred to as 'the independence clearance process, are required to be completed prior to accepting an audit engagement for these entities.

The 'KPMG Independence Checkpoint' tool is used to automate and standardize all the workflows that comprise

the independence clearance process. The tool was developed in anticipation of the increasing number of audit tenders and independence clearances that need to be completed as a result of mandatory firm rotation of statutory audits.



### 7.2.7 Independence training and confirmations

All KPMG Limited partners and client facing professionals, as well as certain other individuals, are required to complete independence training that is appropriate to their grade and function upon joining KPMG Limited and on an annual basis thereafter.

New partners and client facing employees who are required to complete this training are required to do so by the earlier of (a) thirty days after joining KPMG Limited or (b) before providing any services to or becoming a member of the chain of command for, any audit client.

We also provide all partners and employees with annual training on:

- the KPMG Global Code of Conduct and ethical behavior, including KPMG's anti-bribery policies, compliance with laws, regulations, and professional standards; and
- reporting suspected or actual non-compliance with laws, regulations, professional standards and KPMG's policies.

New partners and employees are required to complete this training within three months of joining KPMG Limited.

All KPMG partners and employees are required to sign, upon joining KPMG Limited and thereafter, an annual confirmation stating that they have remained in compliance with applicable ethics and independence policies.

### 7.2.8 Non-audit services

All KPMG firms are required, at a minimum, to comply with the IESBA Code of Ethics and applicable laws and regulations related to the scope of services that can be provided to audit clients.



## Being independent and ethical continued

In addition to identifying potential conflicts of interest, Sentinel™ facilitates compliance with independence requirements. Certain information on all prospective engagements, including detailed service descriptions, deliverables and estimated fees are required to be entered into Sentinel™ as part of the engagement acceptance process. When the engagement is for an audit client, an evaluation of potential independence threats and safeguards is also required to be included in the Sentinel™ submission.

Lead audit engagement partners (LAEPs) are required to maintain group structures for their public interest entity and certain other audit clients including their related entities or affiliates in Sentinel™. They are also responsible for identifying and evaluating any independence threats that may arise from the provision of a proposed non-audit service and the safeguards available to address those threats. For entities for which group structures are maintained, Sentinel enables LAEPs to review and request revision to, approve, or deny any proposed service for those entities worldwide. For approved proposed services, Sentinel designates a timeframe during which the approval remains valid. Upon expiration of the established timeframe, the services are required to be complete or be re-evaluated for permissibility; otherwise, the services are required to be exited.

KPMG Limited is required to establish and maintain a process to review and approve all new and significantly modified services that are developed by KPMG Limited. KPMG Limited's EIP is involved in the review of potential independence issues related to these new or modified services.

KPMG global independence policies prohibit KPMG firm audit partners from being evaluated on, or compensated based on, their success in selling non-audit services to their audit clients.

### 7.2.9 Fee dependency

KPMG International's policies recognize that self-interest or intimidation threats may arise when the total fees from an audit client represent a large proportion of the total fees of the KPMG firm expressing the audit opinion.

These policies require firms to consult with their Regional Risk Management Partner where it is expected that total fees from an audit client will exceed 10 percent of the annual fee income of the member firm for two consecutive years. In addition, if the total fees from a public interest entity audit client and its related entities were to represent more than 10 percent of the total fees received by a particular member firm for two consecutive years, these policies further require that:

- This be disclosed to those charged with governance at the audit client; and
- A partner from another KPMG member firm be appointed as the engagement quality control (EQC) reviewer.

No audit client accounted for more than 10 percent of the total fees received by KPMG Limited over the last two years.

### 7.2.10 Resolving conflicts of interest

Conflicts of interest can arise in situations where KPMG Limited partners or employees have a personal connection with the client that may interfere, or be perceived to interfere, with their ability to remain objective, or where they are personally in possession of confidential information relating to another party to a transaction. Consultation with the RMP or the EIP is required in these situations.

All KPMG firms and personnel are responsible for identifying and managing conflicts of interest, which are circumstances or situations that have, or may be perceived to have an impact on a firm's and/or its partners' or employees' ability to be objective or otherwise act without bias.

All KPMG firms are required to use Sentinel™ for potential conflict identification so that these can be addressed in accordance with legal and professional requirements.

KPMG Limited has risk management resources who are responsible for reviewing any identified potential conflict and working with the affected member firms to resolve the conflict, the outcome of which is required to be documented.

Escalation and dispute resolution procedures are in place for situations in which agreement cannot be reached on how to manage a conflict. If a potential conflict issue cannot be appropriately mitigated, the engagement is declined or terminated.

KPMG International policies are also in place to prohibit KPMG personnel from offering or accepting inducements, including gifts and hospitality to or from audit clients, unless the value is trivial and inconsequential, is not prohibited by relevant law or regulation and is not deemed to have been offered with the intent to improperly influence the behavior of the recipient or which would cast doubt on the individual's or the member firm's integrity, independence, objectivity or judgment.

### 7.2.11 Independence breaches

All KPMG Limited personnel are required to report an independence breach as soon as they become aware of it to the EIP. In the event of failure to comply with our independence policies, whether identified in the compliance review, self-declared or otherwise, professionals are subject to an independence disciplinary policy. All breaches of independence requirements of the IESBA Code of Ethics or other external independence requirements are required to be reported to those charged with governance as soon as possible, except where alternative timing for less significant breaches has been agreed with those charged with governance.



## Being independent and ethical continued

KPMG Limited has a documented and communicated disciplinary policy in relation to breaches of independence policies, incorporating incremental sanctions reflecting the seriousness of any violations.

Matters arising are factored into our promotion and compensation decisions and, in the case of engagement leaders and managers, are reflected in their individual quality and risk metrics.

### 7.2.12 Partner and firm rotation

#### **Partner rotation**

KPMG International partner rotation policies are consistent with the requirements of the IESBA Code of Ethics and require all member firms to comply with any stricter local applicable rotation requirements.

KPMG Limited partners are subject to periodic rotation of their responsibilities for audit clients under applicable laws, regulations, independence rules and KPMG International policy. These requirements place limits on the number of consecutive years that partners in certain roles may provide audit services to a client, followed by a 'time-out' period during which time these partners may not:

- Participate in the audit;
- Provide quality control for the audit;
- Consult with the engagement team or the client regarding technical or industry-specific issues;
- In any way influence the outcome of the audit;
- Lead or coordinate professional services at the client;
- Oversee the relationship of the firm with the audit client; or
- Have any other significant or frequent interaction with senior management or those charged with governance at the client.

KPMG Limited monitors the rotation of audit engagement leaders (such as the engagement partner, the engagement quality control reviewer and any other key audit partner role, where there is a rotation requirement) and develops transition plans to enable allocation of partners with the necessary competence and capability to deliver a consistent quality of service to clients.

#### **Firm rotation**

KPMG Limited is permitted to act as an auditor for PIE entities for a maximum period of 10 years and not to act as auditor for such clients for a 4 year period thereafter (referred to as the 'cooling off period'). KPMG Limited has processes in place to track and manage audit firm rotation.

Additionally, for authorised credit institutions the maximum period is 9 years and not to act as auditors for such clients for a period of 4 years thereafter.

### 7.3 Zero tolerance of bribery and corruption

Compliance with laws, regulations and standards is a key aspect for everyone at KPMG Limited. We have zero tolerance of bribery and corruption.

We prohibit involvement in any type of bribery — even if such conduct is legal or permitted under applicable law or local practice. We also do not tolerate bribery by third parties, including by our clients, suppliers or public officials. KPMG International requires KPMG firms to have appropriate internal controls in place to mitigate the risk of involvement in bribery by the firm and its partners and employees.

All KPMG firm partners and employees are required to take training covering compliance with laws, regulations and professional standards relating to anti-bribery and corruption, including the reporting of suspected or actual non-compliance.

Further information on KPMG International anti-bribery and corruption policies can be found on the [anti-bribery and corruption site](#).



# Performing quality engagements

How an audit is conducted is as important as the result. KPMG Limited partners and employees are expected to demonstrate behaviors consistent with our Values and follow all policies and procedures in the performance of effective and efficient audits.

## 8.1 Consulting where necessary

### 8.1.1 Encouraging a culture of consultation

KPMG encourages a culture of consultation that supports engagement teams at KPMG firms throughout their decision-making processes and is a fundamental contributor to audit quality. KPMG Limited promotes a culture in which consultation is recognized as a strength and that encourages all KPMG professionals to consult on difficult or contentious matters.

To help with this, firms are required to have established protocols for consultation and documentation of significant matters, including procedures to facilitate resolution of differences of opinion on engagement issues. KPMG audit, assurance and reporting manuals also include required consultations. GQRMM includes mandatory consultation requirements on certain matters.

### 8.1.2 Technical consultation and global resources

Technical accounting, auditing and assurance support is available to member firms through the Global Audit Methodology Group (GAMG), KPMG Global Solutions Group (KGSG), the International Standards Group (ISG) and the PCAOB Standards Group (PSG), all of which report directly to the Global Head of Audit.

#### **Global Audit Methodology Group (GAMG)**

KPMG's audit and assurance methodology is developed and maintained by the Global Audit Methodology Group (GAMG). The GAMG develops our audit and assurance methodology based on the requirements of the applicable audit and assurance standards of the IAASB, PCAOB, and AICPA.

#### **KPMG Global Solutions Group (KGSG)**

The KGSG is responsible for the envisioning, development and deployment of global audit solutions, including new technology and automation innovations.

The KGSG and GAMG work collaboratively to support member firms through collaboration, innovation and technology. We have made significant investment in our audit and assurance methodology and tools with the core

focus of improving audit quality, global consistency and standardization.

With locations in each of the three KPMG regions (Americas, EMA and ASPAC), the KGSG and GAMG teams comprise professionals with backgrounds in audit, assurance, IT, data science, mathematics, statistics, and more from around the world, who bring diverse experiences and innovative ways of thinking to further evolve KPMG's audit capabilities.

#### **International Standards Group (ISG)**

The KPMG ISG works with Global IFRS Standards topic teams, with geographic representation from around the world, and the IFRS Standards Panel and Methodology Advisory Group (MAG) to promote consistency of interpretation of IFRS Standards and auditing requirements between member firms, identify emerging issues, and develop global guidance on a timely basis. The ISG recently has expanded its remit to encompass the activities of the International Sustainability Standards Board (ISSB), including providing global thought leadership and guidance as the ISSB issues standards.

#### **PCAOB Standards Group (PSG)**

The KPMG PCAOB Standards Group (PSG) comprises a dedicated group of professionals with backgrounds in PCAOB auditing standards who promote consistency in the interpretation of PCAOB auditing standards in KPMG firms' audits of non-US components and foreign private issuers and non-US components of SEC issuers, as defined by SEC regulations. The PSG also provides input into the development of training for auditors who work on PCAOB audit engagements and, where practicable, facilitates delivery of such training.

#### **Member firm professional practice resources**

Member firms provide consultation support on auditing and technical accounting matters to their audit professionals through professional practice resources (referred to as Department of Professional Practice or DPP). This resource also assists engagement teams where there are differences of opinion either within teams or with the EQC reviewer. Unresolved differences are required to follow a prescribed escalation protocol for final resolution. KPMG's ISG and PSG are also available for consultation support when required.

Across KPMG Limited, the role of DPP is crucial in terms of the support that it provides to the Audit function. It provides technical guidance to client service professionals on specific

## Performing quality engagements continued

engagement related matters, develops and disseminates specific topic related guidance on emerging local technical and professional issues and disseminates international guidance on IFRS Standards and ISAs.

### 8.2 Critically assessing audit evidence using professional judgement and skepticism

On all KPMG audits, the nature and extent of the audit evidence we gather is responsive to the assessed risks. We consider all audit evidence obtained during the course of the audit including contradictory or inconsistent audit evidence. Each team member is required to exercise professional judgement and maintain professional skepticism throughout the audit engagements. Professional skepticism involves a questioning mind and alertness to contradictory or inconsistencies in the audit evidence. Professional judgement encompasses the need to be aware of and alert to biases that may pose threats to good judgements.

### 8.3 Direct, coach, supervise and review

#### 8.3.1 Embedding ongoing coaching, supervision and review

To invest in the building of skills and capabilities of KPMG professionals, KPMG Limited promotes a continuous learning environment and supports a coaching culture.

Ongoing direction, coaching and supervision during an audit involves:

- Engagement partner participation in planning discussions;
- Tracking the progress of the audit engagement;
- Considering the competence and capabilities of the engagement team, including whether they have sufficient time to carry out their work, whether they understand their instructions;
- Whether the team understands its instructions and the work is being carried out in accordance with the planned approach to the engagement;
- Helping engagement team members address any significant matters that arise during the audit and modifying the planned approach appropriately; and
- Identifying matters to review and discuss with more experienced team members during the engagement.

The timely review of the work performed so that significant matters are promptly identified, discussed and addressed is also used as a coaching opportunity.

#### 8.3.2 Engagement quality control (EQC) reviewers

The EQC review is an important part of KPMG's approach to quality. An EQC reviewer is required to be appointed for audit engagements, including any related review(s) of interim financial information, of all listed entities, non-listed entities

with a high public profile, engagements that require an EQC review under applicable laws or regulations, and other engagements, including certain assurance engagements, as designated by the Risk Management Partner or country Head of Audit.

An EQC review is an objective evaluation of significant judgments made by the engagement team and its related conclusions, performed by the EQC reviewer, and completed on or before the date of the report. The EQC reviewer's evaluation of significant judgements includes an evaluation of the engagement team's assessment of significant risks, including fraud risks, the related responses and whether the related conclusions are appropriate. The EQC review is completed only after the EQC reviewer is satisfied that all significant matters they raised have been resolved, though the engagement partner is ultimately responsible for the resolution of accounting and auditing matters.

EQC reviewers are required to meet training, knowledge and experience criteria to perform the EQC review for a particular engagement. Reviewers must be objective, can not be members of the engagement team and must be independent of the audit client.

### 8.4 Appropriately support and document conclusions

#### 8.4.1 Reporting

Auditing standards and the Cyprus Auditors' Law 53(I)/2017 largely dictate the format and content of the auditors' report which includes an opinion on the fair presentation of the reporting entity's financial statements in all material respects. Engagement leaders form all audit opinions based on the audit performed and evidence obtained.

In preparing auditors' reports, engagement partners have access to extensive reporting guidance and technical support through consultations with our DPP, especially where there are significant matters to be reported to users of the auditors' report (e.g. a modification to the opinion or through the inclusion of an 'emphasis of matter' or 'other matter' paragraph).

#### 8.4.2 Engagement documentation

KPMG Limited audit documentation is completed and assembled according to the timeline determined by the KPMG firm in accordance with KPMG International policy and applicable auditing standards. We have implemented administrative, technical, and physical safeguards to protect the confidentiality and integrity of client and firm information. KPMG International adopted policies to apply to all KPMG firms to reduce the time period allowed to assemble audit documentation, which is significantly less than the time period required by the applicable auditing standards.



# 9

## Assessing risks to quality

KPMG International reviews the results of the quality monitoring programs and develops additional global remediation actions as needed.

Global remediation actions developed by KPMG International are aimed at changing behavior and driving quality and consistency across the global organization. Remediation actions may be implemented through the development of global policies, procedures, training, tools and guidance.



# 10

# Communicating effectively

We recognize that another important contributor to upholding audit quality is to obtain and promptly act upon feedback from key stakeholders.

## 10.1 Provide insights, and maintain open and honest two-way communication

At KPMG Limited we stress the importance of keeping those charged with governance informed of issues arising throughout the audit through guidance and supporting resources. We achieve this through a combination of reports and presentations, attendance at audit committee or board meetings, and, when appropriate, ongoing discussions with management and members of the audit committee.

The role of audit committees is key in supporting quality auditing by overseeing the relationship between company and auditor and challenging what auditors do and how they do it.

### KPMG Cyprus Audit Committee Institute

In recognition of the demanding and important role that Audit Committees play for the capital markets and also of the challenges that they face in meeting their responsibilities, the [Audit Committee Institute](#) (ACI) aims to help audit committee members enhance their commitment and ability to implement effective audit committee processes.

The ACI operates in more than 39 countries across the globe including KPMG Limited and provides audit committee members with on matters of interest to audit committees (such as cyber security and corporate culture); and the opportunity to network with their peers during an extensive program of technical updates and awareness seminars.

The KPMG Cyprus ACI, has continued its successful operation in the world of corporate governance, by communicating with Boards and Audit committees to provide updates, through dedicated training sessions, e-meetings and publications shared through email.

The ACI's offerings cover the array of challenges facing audit committees and businesses today — from risk management and emerging technologies to strategy and global compliance.

Further details and insights on the ACI are available [here](#).

### IFRS Standards Institute

KPMG's Global IFRS Standards Institute provides information and resources to help the KPMG Limited Board and Audit Committee members, executives, management, stakeholders and government representatives gain insight and access thought leadership about the evolving global financial and sustainability reporting frameworks.

## 10.2 Conduct and follow-up on the Global People Survey (GPS)

Only with engaged, talented people can KPMG deliver audits in line with our audit quality expectations. Annually KPMG Limited personnel are invited to participate in KPMG's Global People Survey (GPS) to share their perception about their experience of working at KPMG. The GPS provides a measure of our people's engagement and insights into areas driving engagement. Results can be analyzed by several factors, for example functional or geographic area, grade and gender to provide additional focus for action.

Through the GPS, KPMG Limited gains additional insight on how we are faring on categories known to impact employee engagement. We also cover areas of focus that are directly relevant to audit quality; the survey includes specific audit quality related questions that all individuals who participated in an audit in the previous 12 months are asked to respond to, giving us a particular data set for audit quality related matters.

The survey also provides KPMG Limited leadership and KPMG International leadership with insights related to quality and risk behaviors, audit quality, upholding the KPMG Values, employee and partner attitudes to quality, leadership and tone at the top.

KPMG Limited participates in the GPS, monitors results and takes appropriate actions to communicate and respond to the findings of the survey. The results of the GPS are also aggregated for the entire global organization and are presented to the Global Board each year and appropriate follow-up actions agreed.

Audit -specific analysis of GPS results is also undertaken, with a particular focus on audit quality. Results and key themes are presented to the Global Audit Steering Group on an annual basis for consideration of appropriate remedial action, if needed.

# 11

# Monitoring and remediation

Integrated quality monitoring and compliance programs enable KPMG firms to identify quality deficiencies, to perform root cause analysis and develop, implement and report remedial action plans, both in respect of individual audit engagements and the overall system of quality management.

## 11.1 Rigorously monitor and measure quality at the local and global level

### 11.1.1 Commitment to continuous improvement

KPMG commits to continually improve the quality, consistency and efficiency of KPMG firm audits. The quality monitoring and compliance programs are globally consistent in their approach across all member firms, including the nature and extent of testing and reporting. KPMG Limited compares the results of its internal monitoring programs with the results of those of any external inspection programs and take appropriate action.

### 11.1.2 Internal monitoring and compliance programs

KPMG Limited monitoring programs are created by KPMG International and applied across KPMG firms. The programs evaluate both:

- Engagement performance in compliance with the applicable professional standards, applicable laws and regulations and KPMG International key policies and procedures; and
- KPMG Limited compliance with KPMG International key policies and procedures and the relevance, adequacy and effective operation of key quality control policies and procedures.

Our internal monitoring programs also contribute to the assessment of whether our system of quality management has been appropriately designed, effectively implemented, and operates effectively. These include:

Quality Performance Reviews (QPR), the KPMG Quality & Compliance Evaluation program (KQCE) and the Global Quality & Compliance Review (GQ&CR) program.

The results and lessons from the integrated monitoring programs are communicated internally and appropriate action is taken at local, regional and global levels.

### Audit Quality Performance Reviews (QPRs) program

The Audit QPR program assesses engagement level performance and identifies opportunities to improve engagement quality.

### *Risk-based approach*

Each engagement leader is reviewed at least once in a four-year cycle. A risk-based approach is used to select engagements.

KPMG Limited conducts the annual QPR program in accordance with KPMG International QPR instructions. The reviews are performed at KPMG Limited level and are monitored regionally and globally.

### *Reviewer selection, preparation and process*

There are robust criteria for selection of reviewers. Review teams include senior experienced lead reviewers that are independent of the engagement under review.

Training is provided to review teams and others overseeing the process, with a focus on topics of concern identified by audit oversight regulators and the need to be as rigorous as external reviewers.

### *Evaluations from Audit QPR*

Consistent criteria are used to determine engagement ratings and member firm Audit practice evaluations.

Audit engagements selected for review are rated as 'Compliant', 'Compliant- Improvement Needed' or 'Not Compliant'.

### *Reporting*

Findings from the QPR program are disseminated to firm professionals through written communications, internal training tools, and periodic partner, manager and staff meetings.

These areas are also emphasized in subsequent inspection programs to gauge the extent of continuous improvement.

Lead audit engagement partners (LAEPs) are notified of not compliant ratings on their respective cross-border engagements. Additionally, LAEPs of parent companies/head offices are notified where a subsidiary/affiliate of their client group is audited by a member firm where significant quality issues have been identified during the QPR program.

### **KPMG Quality & Compliance Evaluation (KQCE) program (formerly known as Risk Compliance Program (RCP))**

KPMG International develops and maintains quality management policies and processes that apply to all KPMG firms. These policies and processes, and their related procedures, include the requirements of the GQ&RM Manual, ISQC 1, and the implementation requirements of ISQM 1 for



## Monitoring and remediation continued

this transition period. The objectives of the KOCE program are to:

- Document, assess and evidence KPMG Limited's implementation of ISQM 1, extent of compliance of their system of quality management with the Global Quality & Risk Management (GQ&RM) policies and key legal and regulatory requirements and
- Provide the basis for KPMG [insert name] to evaluate that the firm and its personnel comply with relevant professional standards and applicable legal and regulatory requirements.

Where exceptions are identified, we are required to develop appropriate action plans and then monitor the status of each action item.

### Global Quality & Compliance Review (GQ&CR) program

Each KPMG firm is subject to a GQ&CR conducted by KPMG International's GQ&CR team, independent of the member firm, at various intervals based on identified risk criteria

The GQ&CR team performing the review is independent of the firm and is objective and knowledgeable of GQ&RM policies. GQ&CRs assess compliance with selected KPMG International policies and procedures and share best practices among member firms. The GQ&CR provides an independent assessment of:

- A firm's commitment to quality and risk management (tone at the top) and the extent to which its overall structure, governance and financing support and reinforce this commitment;
- A firm's compliance with KPMGI policies and procedures; and
- The robustness with which the member firm performs its own quality and compliance program (former RCP and, current, KOCE program).

KPMG Limited develop action plans to respond to all GQ&CR findings that indicate improvement is required and agree these with the GQ&CR team. Our progress on action plans is monitored by the GQ&CR central team. Results are reported to the GQ&RM Steering Group and where necessary, to appropriate KPMG International and regional leadership.

## 11.2 Obtain, evaluate and act on stakeholder feedback

### 11.2.1 Regulators

In Cyprus the Cyprus Public Audit Oversight Board (CyPAOB) performs annual inspections in relation to listed and major

public-interest entities (PIEs) as defined by the applicable law. Their inspection is divided into two parts:

- review of the selected Firm Wide Controls (FWC) in accordance with the inspection cycle
- review of three audit engagement files (AQR)

The latest FWC inspection commenced in February 2021 revised action plan was submitted for a follow up review. The AQR inspection commenced in August 2022 where three activities were selected for a review which was not yet completed.

KPMG Limited is also registered with the ICPAC. The ICPAC inspected KPMG Limited during the 4<sup>th</sup> quarter of 2019. The review was successfully concluded with an overall satisfactory result.

KPMG Limited is committed in delivering high quality audits. We are considering each of the findings and recommendations identified from all inspections. Robust Root Cause Analysis takes place, as described in section 11.3, with the purpose of addressing areas requiring improvement. We are implementing actions to address deficiencies and strengthen policies and procedures as appropriate.

KPMG International has regular two-way communication with the International Forum of Independent Audit Regulators (IFIAR), principally through IFIAR's Global Audit Quality Working Group (GAQ WG), to discuss thematic audit quality issues along with targeted strategies for improvement. We value the open, honest and transparent dialogue that IFIAR facilitates on global audit quality issues.

Every KPMG firm is expected to maintain professional and respectful relationships with regulators, including proactively engaging, responding to questions in a timely manner and taking appropriate remedial actions.

### 11.2.2 Client feedback

We proactively seek feedback from clients through in-person conversations and third-party surveys to monitor their satisfaction with services delivered. We endeavour to take this feedback and make dynamic changes at both the engagement level and firm level to meet clients' needs.

### 11.2.3 Monitoring of complaints

We have procedures in place for monitoring and addressing complaints received relating to the quality of our work. These procedures are detailed in our general terms of business.

### 11.2.4 Other assessment of audit quality. Policy for Second line of defence (2LoD) reviewers

Second line of defence (2LoD) reviewers support specific audit teams during the conduct of their work and navigate key audit areas of the audit. All 2LoD reviewers are high performing individuals. They coach teams to develop and robustly evidence risk assessment, audit approach and the execution of the key audit procedures. Their goal is to improve audit quality on these specific audits, before the audit opinion is issued, and more broadly by gathering data inputs for consideration as part of our quality risk assessment and continuous improvement initiatives. In addition, pre issuance reviews of clients' financial statements pre performed when required and in accordance with the local policy.

### 11.3 Perform root cause analysis

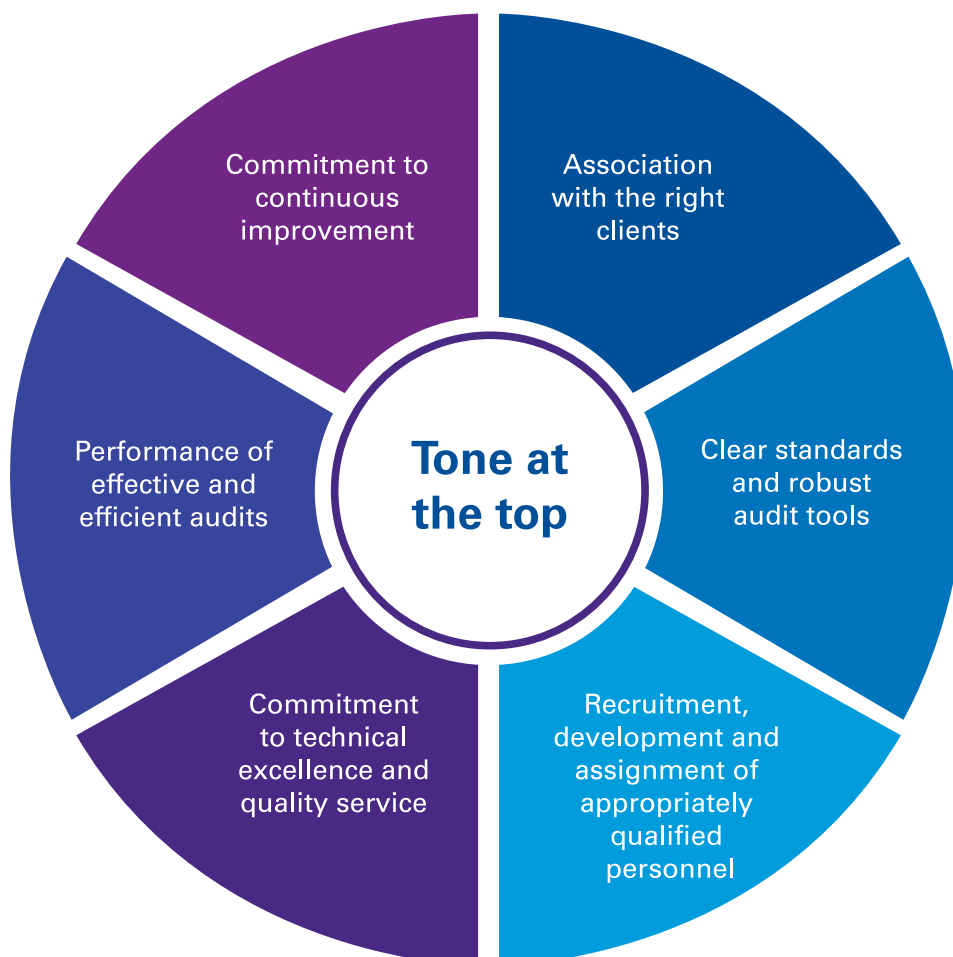
KPMG Limited performs root cause analysis to identify and address audit quality issues in order to prevent them from recurring and help identify good practices as part of continuous improvement. In 2022, RCA training based on

our Global RCA 5 Step Principles was attended by those individuals at KPMG Limited who will be performing RCA or directing those performing RCA. The training provides a common platform for advancing the practices and skills associated with resourcing, planning and conducting RCA.

It is the responsibility of all KPMG firms to perform RCA and thereby identify and subsequently develop appropriate remediation plans for the audit quality issues identified.

KPMG Limited's Head of Audit is responsible for the development and implementation of action plans as a result of RCA, including identification of solution owners. Our Risk Management Partner monitors their implementation.

**The Global RCA 5 Step Principles are as follows:**



## 12

# Financial information

Total firm's revenues are analyzed as follows:

|                        | 2022<br>€' 000 | 2021<br>€' 000 | %<br>CHANGE  |
|------------------------|----------------|----------------|--------------|
| <b>Audit</b>           | <b>26.395</b>  | <b>27.016</b>  | <b>(2,3)</b> |
| <b>Tax &amp; Legal</b> | <b>8.407</b>   | <b>7.944</b>   | <b>5,8</b>   |
| <b>Advisory</b>        | <b>11.178</b>  | <b>10.857</b>  | <b>3,0</b>   |
| <b>Total</b>           | <b>45.980</b>  | <b>45.817</b>  | <b>0,4</b>   |

| Services  | 2022<br>€' 000 | 2021<br>€' 000 |
|---|----------------|----------------|
| <b>Revenues from the statutory audit of annual and consolidated financial statements of public-interest entities and entities belonging to a group of undertakings whose parent undertaking is a public-interest entity</b> | <b>2.267</b>   | <b>3.117</b>   |
| <b>Revenues from the statutory audit of annual and consolidated financial statements of other entities</b>  | <b>21.609</b>  | <b>20.444</b>  |
| <b>Revenues from other assurance services to public-interest entities and entities belonging to a group of undertakings whose parent undertaking is a public-interest entity; and other entities</b>                        | <b>2.519</b>   | <b>3.455</b>   |
| <b>Revenues from permitted non-audit services to entities that are audited by the statutory auditor or the audit firm</b>   | <b>5.204</b>   | <b>5.077</b>   |
| <b>Revenues from non-audit services to other entities</b>   | <b>14.381</b>  | <b>13.724</b>  |
| <b>Total</b>  | <b>45.980</b>  | <b>45.817</b>  |

Revenues are reported net, exclusive of expenses incurred for the performance of services.

#### **Total turnover achieved by KPMG EU/EEA audit firms resulting from the statutory audit of annual and consolidated financial statements\***

Aggregated revenues generated by KPMG firms from EU and EEA Member States resulting from the statutory audit of annual and consolidated financial statements was 2.2 billion euros during the fiscal year ending 30 September 2022. The EU/EEA aggregated statutory audit revenue figures are presented to the best extent currently calculable and translated at the average exchange rate prevailing in the 12 months ended 30 September 2022.

*\* The financial information set forth represents combined information of the separate KPMG member firms from EU and EEA Member States that perform professional services for clients. The information is combined here solely for presentation purposes. KPMG International performs no services for clients nor, concomitantly, generates any client revenue.*



# Partner remuneration

## Partners' profit share

Partners are remunerated out of the distributable profits of KPMG Limited (such profits being determined by the KPMG Limited Board) and are personally responsible for funding pensions and most other benefits. The final allocation of profits to partners is made by KPMG Limited after assessing each partner's contribution for the year.

There are four elements to partner remuneration:

- Base component – a proportion of the KPMG Limited budgeted profits are allocated to members as base component; this is effectively member salary. The amount of base component reflects the role and seniority of each partner. In the year to 31 December 2022, the total base component was approximately 55% of the profits allocated to individual members which is subsequently adjusted to 50% in accordance with the partnership agreement (2021: 55%); and
- Profit related performance component – rewards performance in the year by each partner against individual objectives previously agreed and the overall profits of their part of KPMG Limited as a whole. Our policies for this variable element of partner remuneration take into account a number of factors including quality of work, excellence in client service, growth in revenue and profitability, leadership and living the KPMG Values. Audit partners are not permitted to have objectives related to, or receive any remuneration from, selling non-audit services to their audit clients. In addition, a part of their performance-related component is based on an assessment of their ability to deliver audit quality.
- Bonus payment – allocated based on exceptional performance in a year and considering a number of criteria; and
- Financial penalty – deduction to reflect cases for deficient performance of the individual in a year.

Our policies of partner remuneration take into account a number of factors including quality of work, excellence in client service, growth in revenue and profitability, leadership and living the KPMG Values.

Each partner is required to submit a written appraisal to the Appraising Committee detailing his/her own view of performance against objectives over the previous year. The Appraising Committee specifically considers the contribution of each partner to quality on their engagements. Quality is one of the most important metrics for measuring the performance – and by extension, the reward of partners. The Quality and Performance Matrix is used to assess an individual's performance looks at quality and how it interacts with other factors. The overall rating depends on the interaction of both. We use a quality matrix to collate both objective and subjective evidence of performance. Evidence includes indicators from reviews and inspections, and feedback from the quality process.

## Drawings

During the year, partners working within KPMG Limited received monthly drawings, and from time to time, additional profit distributions. The level and timing of the additional distributions is decided by the Executive Committee, taking into account cash requirements for operating and investing activities. All such drawings and profit distributions to partners represent payments on account of current year profits and are reclaimable from members until profits have been allocated. Any over-distribution of profits during the year is also recoverable from partners.

# 14

# Network arrangements

## 14.1 Legal structure

### Legal structure

KPMG Limited and all other KPMG firms are party to membership and associated documents, the key impact of which is that all KPMG member firms in the KPMG global organization are members in, or have other legal connections to, KPMG International Limited, an English private company limited by guarantee.

KPMG International Limited has been the coordinating entity for the overall benefit of the KPMG member firms. It does not provide professional services to clients. Professional services to clients are exclusively provided by member firms.

KPMG is the registered trademark of KPMG International and is the name by which the member firms are commonly known. The rights of member firms to use the KPMG name and marks are contained within agreements with KPMG International.

Pursuant to their membership agreements with KPMG International, member firms are required to comply with KPMG International's policies, including quality standards governing how they operate and how they provide services to clients to compete effectively. This includes being professionally and financially stable; having an ownership, governance and management structure that ensures continuity and stability and long-term success; and being able to comply with policies issued by KPMG International, adopt global strategies, share resources (incoming and outgoing), service multi-national clients, manage risk, and deploy global methodologies and tools.

KPMG International Limited and the KPMG member firms are not a global partnership, single firm, multinational corporation, joint venture, or in a principal or agent relationship or partnership with each other. No member firm has any authority to obligate or bind KPMG International Limited, any of its related entities or any other member firm vis-à-vis third parties, nor does KPMG International Limited or any of its related entities have any such authority to obligate or bind any member firm.

Further detail on the revised legal and governance arrangements for the KPMG global organization can be found in section 'Governance and leadership' of the [2022 KPMG International Transparency Report](#).

The name of each audit firm that is a member of the organization and the EU/EEA countries in which each firm is qualified as a statutory auditor or has its registered office, central administration or principal place of business are available in *Appendix 3*.

## 14.2 Responsibilities and Obligations of Member Firms

Under agreements with KPMG International, member firms are required to comply with KPMG International's policies and regulations including quality standards governing how they operate and how they provide services to clients to compete effectively. This includes having a firm structure that ensures continuity and stability and being able to adopt global strategies, share resources (incoming and outgoing), service multi-national clients, manage risk, and deploy global methodologies and tools.

Each KPMG firm takes responsibility for its management and the quality of its work. Member firms commit to a common set of KPMG Values.

KPMG International's activities are funded by amounts paid by member firms. The basis for calculating such amounts is approved by the KPMG International Global Board and consistently applied to the firms. A firm's status as a KPMG member firm and its participation in the KPMG global organization may be terminated if, among other things, it has not complied with the policies set by KPMG International or any of its other obligations owed to KPMG International.

## 14.3 Professional Indemnity Insurance

Insurance cover is maintained in respect of professional negligence claims. The cover provides a territorial coverage on a worldwide basis.

## 14.4 Governance structure

The key governance and management bodies of KPMG International are the Global Council, the Global Board, and the Global Management Team.

### Global Council

The Global Council focuses on high-level governance tasks and provides a forum for open discussion and communication among member firms.

Among other things, the Global Council elects the Global Chairman and also approves the appointment of Global Board members. It includes representation from 56 KPMG firms that are “members” of KPMG International Limited as a matter of English law.

### Global Board

The Global Board is the principal governance and oversight body of KPMG International. The key responsibilities of the Global Board include approving global strategy, protecting and enhancing the KPMG brand and reputation, overseeing the Global Management Team and approving policies with which KPMG firms are required to comply. It also approves the admittance or termination of KPMG firms to/from the global organization.

It is led by the Global Chairman, Bill Thomas, and also includes the Chairman of each of the regions (the Americas; Asia Pacific (ASPAC); and Europe, the Middle East, and Africa (EMA)), and a number of members who are also member firm Senior Partners.

The list of current Global Board members, is set out on the [Leadership](#) section on [kpmg.com](#)

### Global Board committees:

The Global Board is supported in its oversight and governance responsibilities by several committees, including:

- Executive Committee;
- Governance Committee;
- Global Quality, Risk Management and Reputation Committee; and
- Global Audit Quality Committee.

The overarching responsibility of the Global Audit Quality Committee is to strive for globally consistent audit quality across all firms and to oversee those KPMG International activities which relate to improving and maintaining the consistency and quality of audits, assurance engagements and the system of quality management provided by KPMG firms.

### Global Management Team

The Global Board has delegated certain responsibilities to the Global Management Team. These responsibilities include developing the global strategy by working together with the Executive Committee, and jointly recommending the global strategy to the Global Board for its approval. The Global Management Team also supports KPMG firms in their execution of the global strategy and KPMG International decisions and policies by member firms, including holding them accountable against their commitments.

It is led by the Global Chairman, Bill Thomas. The list of current Global Management Team members is available in the [Leadership](#) section on [KPMG.com](#).

### Global Steering Groups

There is a Global Steering Group for each key function and infrastructure area, chaired by the relevant member of the Global Management Team and, together they assist the Global Management Team in discharging its responsibilities. They act under delegated authority from the Global Board and oversight by the Global Management Team (GMT). Under the oversight of the GMT, they promote the execution of the global strategy and compliance with KPMG International decisions and policies by member firms.

In particular, the Global Audit Steering Group and Global Quality & Risk Management Steering Group work closely with regional and member firm leadership to:

- Establish, and ensure communication of, appropriate audit and quality/risk management policies;
- Establish and support effective and efficient risk processes to promote audit quality;
- Promote and support the implementation of strategy implementation in member firms’ audit functions, including standards of audit quality; and
- Assess and monitor audit engagement quality, including issues arising from quality performance and regulatory reviews, and focus on best practices to increase audit quality.

The roles of the Global Audit Steering Group and the Global Quality & Risk Management Steering Group are detailed in section ‘Governance and leadership’ of the [2022 KPMG International Transparency Report](#).

Each firm is part of one of three regions (the Americas, ASPAC, and EMA). Each region has a Regional Board comprising a regional chairman, regional chief operating officer, representation from any sub-regions, and other members as appropriate. Each Regional Board focuses specifically on the needs of member firms within their region and assists in the implementation of KPMG International’s policies and processes within the region.

Further details about KPMG International including the governance arrangements for the year ending 30 September 2022, can be found in section ‘Governance and leadership’ of the [2022 KPMG International Transparency Report](#).



# Statement by the Board of Directors of KPMG Limited on the effectiveness of quality controls and independence

The measures and procedures that serve as the basis for the system of quality management for KPMG Limited outlined in this report aim to provide a reasonable degree of assurance that the statutory audits carried out by our firm comply with the applicable laws and regulations. Because of its inherent limitations, the system of quality controls is not intended to provide absolute assurance that non-compliance with relevant laws and regulations would be prevented or detected.

The Board of KPMG Limited has considered:

- The design and operation of the quality control systems as described in this report;
- The findings from the various compliance programs operated by our firm (including the KPMG International review programs as described in section 11.1.2 and our local compliance monitoring programs); and
- Findings from regulatory inspections and subsequent follow up and/or remedial actions.

Taking all of this evidence together, the Board of KPMG Limited confirms with a reasonable level of assurance that the systems of quality control within our firm have operated effectively in the year to 31 December 2022.

Further, the Board of KPMG Limited confirms that an internal review of independence compliance within our firm has been conducted in the year to 31 December 2022.

*KPMG Limited*

Nicosia, 28 April 2023



## Appendix 1: Public Interest Entities

EU public interest entities (as defined in EU Directive 2014/56/EU) for which we carried out statutory audits between 1 January 2022 to 31 December 2022 are listed below.

### Listed Entities

A.Tsokkos Hotels Public Limited  
 Asbis Enterprises Plc  
 Blue Island Plc  
 Cyprus Forest Industries Public Ltd  
 CyprusTrading Corporation Plc  
 Dome Investments  
 Public Company Limited  
 Leptos Calypso Hotels  
 Public Limited Logicom Public Limited  
 Lordos Hotels (Holdings)  
 Public Limited NETInfo Plc  
 Petrolina (Holdings) Public Limited  
 Purcari Wineries Public Company Limited  
 Vassiliko Cement Works Public Company Ltd  
 Top KinisisTravel Plc  
 BrokerCredit Service Structured Products Plc

### Non Listed Insurance Entities

Eurosure Insurance Company Limited  
 Gan Direct Insurance Limited  
 Grawe Reinsurance Limited  
 KLPP Insurance and Reinsurance Company Ltd  
 Medlife Insurance Limited  
 Prime Insurance Company Limited  
 Royal Crown Insurance Company Limited  
 Ydrogeios Insurance Company (Cyprus) Limited  
 Altius Insurance Ltd  
 Asfalistiki Etaireia I 'Kentiriki' Limited  
 HD Insurance Limited

### Non Listed Banks

Eurobank Cyprus Ltd  
 Lebanon & Gulf Bank SAL - Larnaca Branch



## Appendix 2: Executive Committee 2022



**Christos Vasiliou**  
Managing Director

Christos Vasiliou became a Partner in 1999 and he is currently serving as the Managing Director of KPMG in Cyprus. He has been a member of the Executive Committee since 2009.



**Michael Antoniadis**  
Chairman

Michael Antoniadis became a Partner in 1998 and he is currently serving as the Chairman of KPMG in Cyprus. He has been a member of the Executive Committee since 2013.



**Loizides Sylvia**  
Head of Audit

Sylvia Loizides is the Head of the Audit department and a member of KPMG's EMA Audit Leaders Group. She became a Partner in 1997. She has been a member of the Executive Committee for more than 10 years. Sylvia also leads the firm's Shipping service line.



**George Markides**  
Head of Tax

George Markides became a Partner in 2007. He has been a member of the Executive Committee since 2016. He also leads the firm's Tax department.

## Appendix 2: Executive Committee 2022 continued



**Lazarou Marios**  
Head of Advisory

Marios Lazarou became a Partner in 2010 and he leads the Advisory department of KPMG in Cyprus. He has been a member of the Executive Committee since 2022.



**Constantinos Kallis**  
Partner in Nicosia Office

Constantinos Kallis became a Partner in 2009. He is currently the Risk Management Partner at KPMG in Cyprus. He has been a member of the Executive Committee since 2019.



**Michael Halios**  
Partner in Charge of Larnaca Office

Michael Halios became a Partner within KPMG in Cyprus in 2000. He has been a member of the Executive Committee since 2013.



**Paris Elia**  
Partner in Larnaca Office

Paris Elia became a Partner within KPMG in Cyprus in 2010. He leads an audit and assurance group. He is the Firm's Audit Function Quality Performance Liaison Partner. He has been a member of the Executive Committee since 2022.

## Appendix 2: Executive Committee 2022 continued



**Panayiotis Peleties**

Partner in Nicosia Office

Panayiotis Peleties became a Partner in 2005. He leads the IFRG team and the Financial Services Sector - Banking at KPMG in Cyprus. He has been a member of the Executive Committee since 2018.



**Maria Papacosta**

Partner in Nicosia Office

Maria Papacosta became a Partner in 2007. She leads the Clients & Markets department and the firm's Agriculture service line. She has been a Member of the Executive Committee since 2019.



**Christoforos Anayiotos**

Partner in Nicosia Office

Christoforos Anayiotos became a Partner in 2008. He leads the Deal Advisory of KPMG in Cyprus. He has been a member of the Executive Committee since 2019.

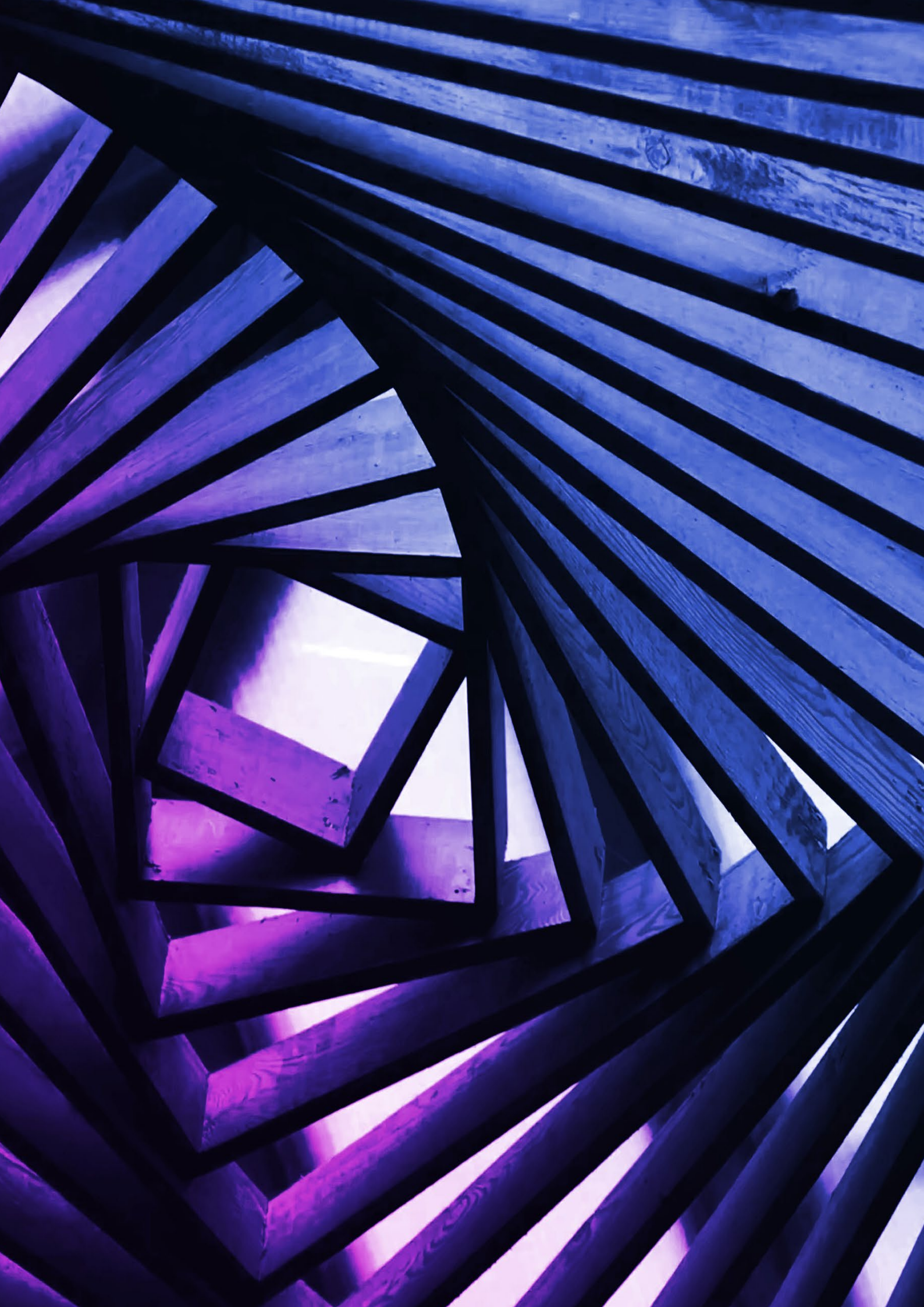


**Costas Markides**

Partner in Nicosia Office

Costas Markides became a Partner in 2011. He leads the International Tax Services of KPMG in Cyprus. He has been a member of the Executive Committee since 2022.





## Appendix 3: List of KPMG audit entities located in EU & EEA as of 1 October 2022

| Location       | Firm Name   |
|----------------|---|
| Austria        | KPMG Austria GmbH Wirtschaftsprüfungs- und Steuerberatungsgesellschaft (Wien)                                       |
| Austria        | KPMG Alpen-Treuhand GmbH Wirtschaftsprüfungs- und Steuerberatungsgesellschaft (Wien)                                |
| Austria        | KPMG Austria GmbH Wirtschaftsprüfungs- und Steuerberatungsgesellschaft (Linz)                                       |
| Austria        | KPMG Niederösterreich GmbH Wirtschaftsprüfungs- und Steuerberatungsgesellschaft                                     |
| Belgium        | KPMG Bedrijfsrevisoren / KPMG Réviseurs d'Entreprises   |
| Bulgaria       | KPMG Audit OOD  |
| Croatia        | KPMG Croatia d.o.o. za reviziju   |
| Cyprus         | KPMG  |
| Cyprus         | KPMG Limited  |
| Czech Republic | KPMG Česká republika Audit, s.r.o.  |
| Denmark        | KPMG P/S  |
| Estonia        | KPMG Baltics OÜ   |
| Finland        | KPMG Oy Ab  |
| Finland        | KPMG Julkistarkastus Oy   |
| France         | KPMG Associés S.A.  |
| France         | KPMG Audit Est S.A.S.   |
| France         | KPMG Audit FS I S.A.S.  |
| France         | KPMG Audit ID S.A.S.  |
| France         | KPMG Audit IS S.A.S.  |
| France         | KPMG Audit Nord S.A.S.  |
| France         | KPMG Audit Ouest S.A.S.   |
| France         | KPMG Audit Paris et Centre S.A.S.   |
| France         | KPMG Audit Rhône Alpes Auvergne S.A.S.  |
| France         | KPMG Audit Sud-Est S.A.S.   |
| France         | KPMG Audit Sud-Ouest S.A.S.   |
| France         | KPMG Fiduciaire de France   |
| France         | KPMG SA   |
| France         | SALUSTRO REYDEL S.A.  |
| Germany        | KPMG AG Wirtschaftsprüfungsgesellschaft   |
| Germany        | KPMG Bayerische Treuhandgesellschaft Aktiengesellschaft Wirtschaftsprüfungsgesellschaft Steuerberatungsgesellschaft |
| Greece         | KPMG Certified Auditors S.A.  |
| Greece         | KPMG Auditing A.E.  |
| Hungary        | KPMG Hungária Kft./KPMG Hungary Ltd.  |
| Iceland        | KPMG ehf.   |
| Ireland        | KPMG  |

| Location      | Firm Name   |
|---------------|---|
| Italy         | KPMG S.p.A.   |
| Italy         | KPMG Audit S.p.A.   |
| Latvia        | KPMG Baltics SIA  |
| Liechtenstein | KPMG (Liechtenstein) AG   |
| Lithuania     | KPMG Baltics UAB  |
| Luxembourg    | KPMG Luxembourg SA  |
| Malta         | KPMG  |
| Netherlands   | KPMG Accountants N.V.   |
| Norway        | KPMG Holding AS   |
| Norway        | KPMG AS   |
| Poland        | KPMG Audyt Services Spółka z ograniczoną odpowiedzialnością           |
| Poland        | KPMG Audyt Spółka z ograniczoną odpowiedzialnością                    |
| Poland        | KPMG Audyt Spółka z ograniczoną odpowiedzialnością Spółka Komandytowa |
| Portugal      | KPMG & Associados - Sociedade de Revisores Oficiais de Contas, S.A.   |
| Romania       | KPMG Audit SRL  |
| Slovakia      | KPMG Slovensko spol. s r.o.   |
| Slovenia      | KPMG Slovenija, podjetje za revidiranje, d.o.o.                       |
| Spain         | KPMG Auditores, S.L.  |
| Sweden        | KPMG AB   |

# Contact us

## **Nicosia**

**T:** +357 22 209 000

**F:** +357 22 678 200

**E:** [nicosia@kpmg.com.cy](mailto:nicosia@kpmg.com.cy)

## **Limassol**

**T:** +357 25 869 000

**F:** +357 25 363 842

**E:** [limassol@kpmg.com.cy](mailto:limassol@kpmg.com.cy)

## **Larnaca**

**T:** +357 24 200 000

**F:** +357 24 200 200

**E:** [larnaca@kpmg.com.cy](mailto:larnaca@kpmg.com.cy)

## **Paralimni**

**T:** +357 23 820 080

**F:** +357 23 820 084

**E:** [paralimni@kpmg.com.cy](mailto:paralimni@kpmg.com.cy)

## **Paphos**

**T:** +357 26 943 050

**F:** +357 26 943 062

**E:** [paphos@kpmg.com.cy](mailto:paphos@kpmg.com.cy)

## **Polis Chrysochous**

**T:** +357 26 322 098

**F:** +357 26 322 722

**E:** [paphos@kpmg.com.cy](mailto:paphos@kpmg.com.cy)

**[www.kpmg.com.cy](http://www.kpmg.com.cy)**



©2023 KPMG Limited, a Cyprus limited liability company and a member firm of the KPMG global organization of independent member firms affiliated with KPMG International Limited, a private English company limited by guarantee. All rights reserved.

The information contained herein is of a general nature and is not intended to address the circumstances of any particular individual or entity. Although we endeavor to provide accurate and timely information, there can be no guarantee that such information is accurate as of the date it is received or that it will continue to be accurate in the future. No one should act on such information without appropriate professional advice after a thorough examination of the particular situation.

The KPMG name and logo are trademarks used under license by the independent member firms of the KPMG global organization.