



Immigration Services

Tax Services



April 2025

Immigration Services

In today's increasingly globalised marketplace, business opportunities can emerge anywhere and often come with very little notice. KPMG recognises that today's businesses must remain constantly alert and strategically position themselves in the right place at the right time.

Our processes and network of professionals can assist you streamline the complex and time-consuming immigration issues, mitigate any associated risks and provide the insights needed to help businesses meet their organisational goals.

KPMG in Cyprus can help alleviate the burden of immigration compliance procedures for locally hired employees, inbound assignees, remote workforce and business travelers, allowing companies to focus on what matters most—their core business. It is important that in an increasingly volatile and uncertain business environment in which businesses

are called to operate and deliver robust results, KPMG's commitment to quality and details driven approach remains uncompromised.

In any international assignment, it is crucial that both the employer and the international assignee have confidence that all aspects of the assignment are being managed professionally and diligently by a competent local team with access to global expertise.

Moreover, taking into consideration the new reality of work, the so-called "Work from anywhere", many organisations are nowadays adopting remote ways of working. What started as an extraordinary pilot during the global pandemic is now considered permanent in many organisations' business model framework. Immigration considerations are a key risk factor that must be carefully addressed in implementing international remote work arrangements.

Managing a global workforce means observing and complying with complex and fast changing immigration laws worldwide.

KPMG in Cyprus is committed to work with you to design and deliver a holistic strategy customised to your specific needs.

Immigration support services to businesses

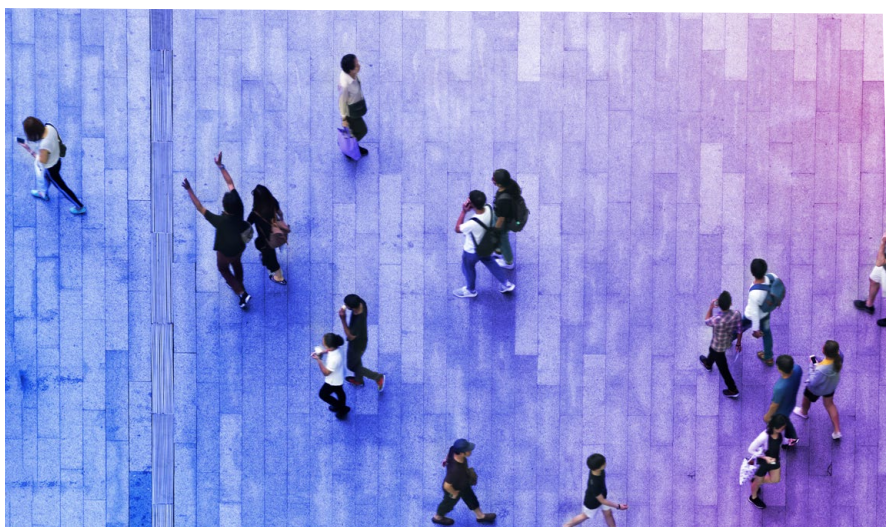
Our team of specialists can assist businesses comply with the full spectrum of immigration-related matters that may arise, such as:

- Registration of the Cypriot entity with the Business Facilitation Unit, in order to employ highly skilled third country nationals.
- Applying to the Cyprus Department of Labour in order to obtain approval for the employment of a third country national.
- Submission of the required notification to the Department of Labour, in relation to the posting of workers in the framework of the provision of services in the EU.
- Certification and translation of documents which are required for the relevant immigration-related applications.

Immigration support services to international assignees and private clients

Our deep expertise in our chosen field means KPMG is able to assist international assignees and private clients from a local and a global immigration standpoint. More





specifically, we can assist with all immigration issues that may affect international assignees and private clients, such as:

- Registration of EU and non-EU Citizens with the relevant Authorities, in order to be eligible to legally reside and work in Cyprus.
- Assist with the applications for family members and personal staff, in order to work and reside legally in Cyprus.
- Assist with the renewal of residence permits for international assignees and their family members.
- Assist with the certification and translation of documents which are required for the relevant immigration-related applications.

Why KPMG in Cyprus?

KPMG operates in Cyprus since 1948 and today is one of the largest professional services organisations

in the market. Our firm in Cyprus employs more than 800 people, including 45 Board Members, working from 6 offices across the island (Nicosia, Limassol, Larnaca, Pafos, Paralimni and Polis Chrysochous). We are a member of the global network of KPMG, one of the world's largest professional firms providing Audit, Tax and Advisory services, employing 275.000 people in 142 countries and territories.

At KPMG, our guiding philosophy is to provide our clients with the highest-quality service. Through our peoples' high academic and professional qualifications and experience, KPMG can deliver value-adding solutions for demanding and complex projects. Quality service is a total and continuing commitment.

Most importantly we care! Our team members are outcome-oriented individuals, aiming to provide an outstanding personalised service with rapid response times.

Main contacts:

George Markides

Board Member
Head of Tax services

T: +357 22 209 240

E: gmarkides@kpmg.com

Costas Markides

Board Member
Head of Immigration services
Primary contact

T: +357 22 209 246

E: cmarkides@kpmg.com

Michael Halios

Board Member
Tax services

T: +357 24 200 000

E: mhalios@kpmg.com

Michalis Loizides

Board Member
Tax services

T: +357 25 869 106

E: mloizides@kpmg.com

Katia Papanicolaou

Board Member
Tax services

T: +357 22 209 149

E: kpapanicolaou@kpmg.com

Stelios Stylianou

Board Member
Tax services

T: +357 22 209 326

E: stylianous@kpmg.com

Contact us

Nicosia

T: +357 22 209 000

F: +357 22 678 200

E: nicosia@kpmg.com.cy

Limassol

T: +357 25 869 000

F: +357 25 363 842

E: limassol@kpmg.com.cy

Larnaca

T: +357 24 200 000

F: +357 24 200 200

E: larnaca@kpmg.com.cy

Paralimni

T: +357 23 820 080

F: +357 23 820 084

E: paralimni@kpmg.com.cy

Paphos

T: +357 26 943 050

F: +357 26 943 062

E: paphos@kpmg.com.cy

Polis Chrysochous

T: +357 26 322 098

F: +357 26 322 722

E: paphos@kpmg.com.cy

www.kpmg.com.cy



©2025 KPMG Limited, a Cyprus limited liability company and a member firm of the KPMG global organization of independent member firms affiliated with KPMG International Limited, a private English company limited by guarantee. All rights reserved.

The information contained herein is of a general nature and is not intended to address the circumstances of any particular individual or entity. Although we endeavor to provide accurate and timely information, there can be no guarantee that such information is accurate as of the date it is received or that it will continue to be accurate in the future. No one should act on such information without appropriate professional advice after a thorough examination of the particular situation.

The KPMG name and logo are trademarks used under license by the independent member firms of the KPMG global organization.