



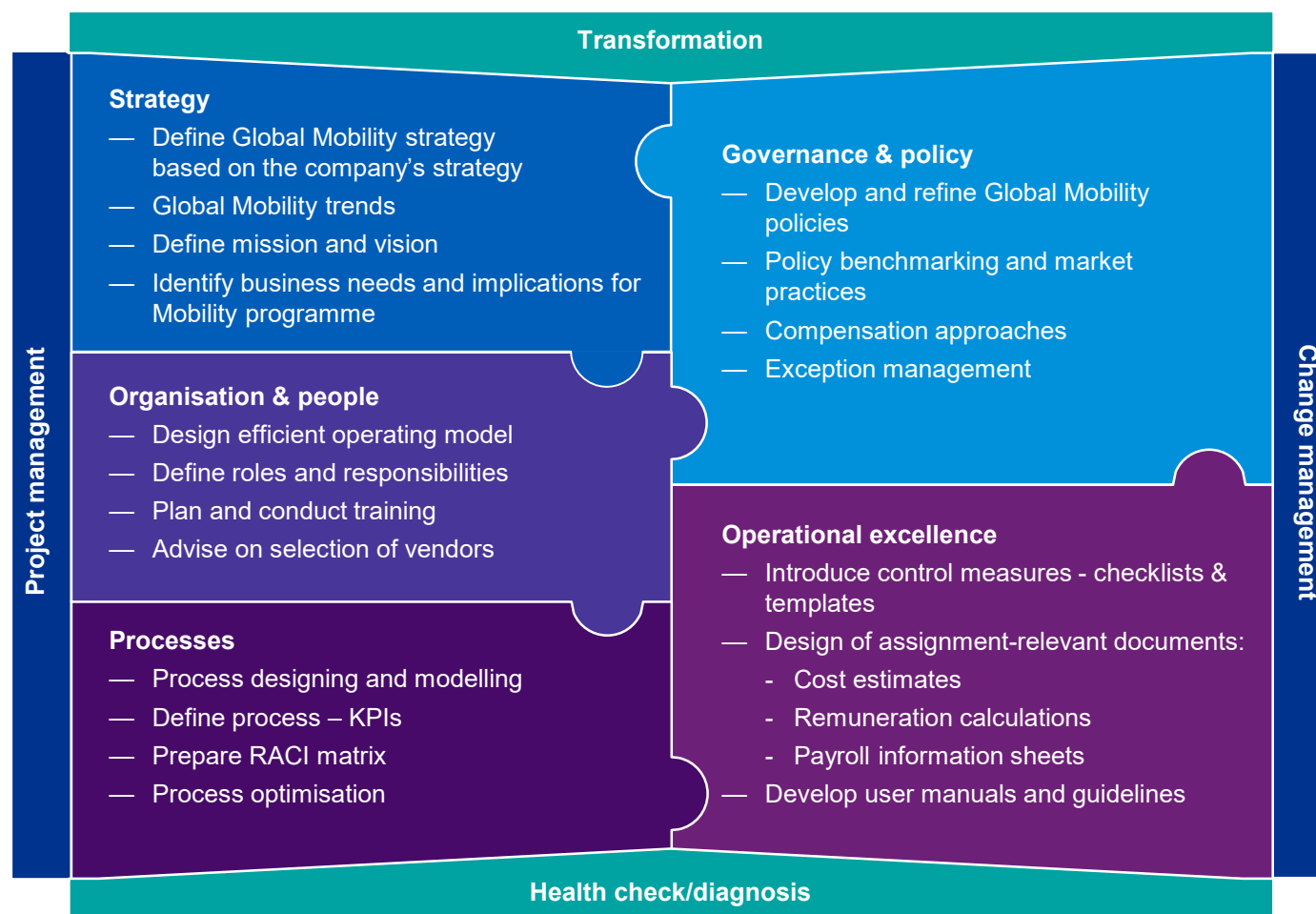
# Global Mobility Services - HR

## Consultancy approach

We collaborate with you as a strategic partner and advise you on Global Mobility.



## Consulting portfolio



## Our tools



## Contacts

**Thomas Efkemann**  
Partner  
T +49 621 426 7629  
tefkemann@kpmg.com

**Anna-Lena Kimmig**  
Senior Manager  
T +49 621 426 7892  
akimmig@kpmg.com

**Anita Schäfer**  
Senior Manager  
T +49 69 9587 2195  
anitaschaefer@kpmg.com

**Sonja Ziegler**  
Manager  
T +49 621 426 7847  
sonjaziegler@kpmg.com

[www.kpmg.de](http://www.kpmg.de)  
[www.kpmg.de/socialmedia](http://www.kpmg.de/socialmedia)

