



KPMG Valuation Data Source

Relevant cost of capital parameters at a glance

A KPMG Deal Advisory Valuation product

KPMG Valuation Data Source

Relevant cost of capital parameters at a glance

The KPMG Valuation Data Source provides all important cost of capital parameters at the push of a button. In just a few steps, the exact cost of capital is derived on the basis of an individual peer group.

The features at a glance

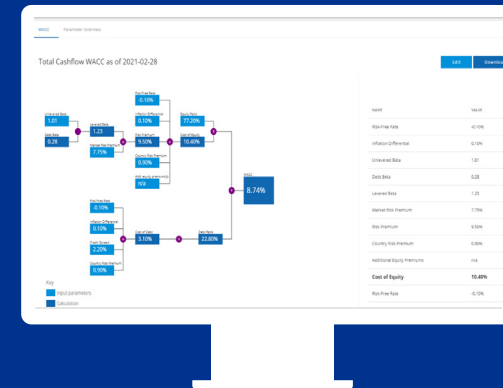


Precise cost of capital (WACC or cost of equity) at the push of a button

Analytics of individual capital market parameters in 150 countries

Immediate access to industry betas for approx. 70 sectors

Access to a monthly updated database of
>17,500 companies worldwide



Request a demo now!

- ✓ **Reliable data from a single source**
- ✓ **Updated monthly**
- ✓ **Available at any time**
- ✓ **Unlimited number of queries**
- ✓ **Export as MS Excel and as PDF**

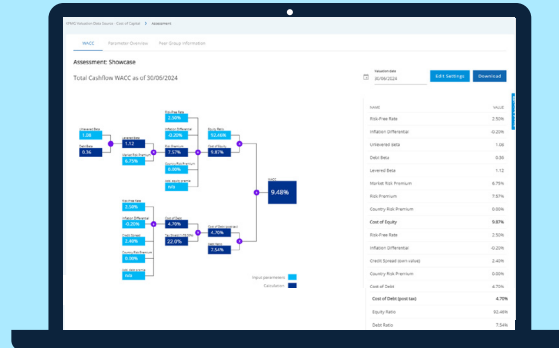
The KPMG Valuation Data Source is a suite that combines 2 apps. These enable specific, time-saving analyses.

KPMG Valuation Data Source

01

Cost of Capital (WACC) App

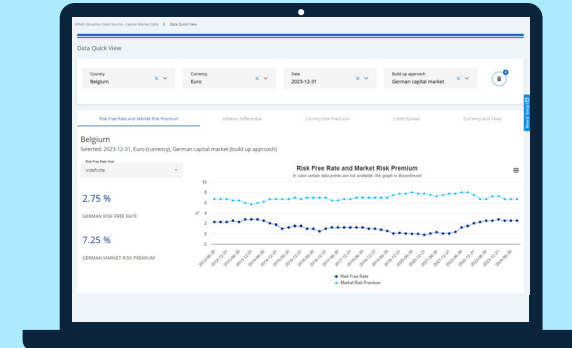
The central app to derive **cost of capital** based on an **individual peer group** that enables deep analysis of the **WACC, CoE or CoD**.



02

Capital Market Data App



The app for **country-specific capital market parameters** for advanced analysis.



The Valuation Data Source is a suite of apps enabling both rapid and in-depth analyses. All data comes from a single source and KPMG experts ensure its reliability.

Cost of Capital App allows a robust and time-saving WACC derivation

Country specific cost of capital analysis – peer group based

Use cases	Input & selections		Output & format
<ul style="list-style-type: none"> • Impairment testing • (Intangible) asset valuation • PPAs • Tax valuations • M&A transactions 	<ul style="list-style-type: none"> • Valuation date <i>Select date</i> • Country <i>Select one</i> • Currency <i>Select one</i> • Peer group <i>Select companies</i> • Risk-free rate <i>Select duration</i> • Credit spread <i>Peer group based</i> 	<ul style="list-style-type: none"> • Inflation delta <i>Select duration</i> • Market risk premium <i>Predefined</i> • Beta <i>Set calculation settings</i> • Tax rate <i>As per selected country</i> • Country risk premium <i>Select obs. period</i> • Alpha factor (e.g. size) <i>Manual input</i> 	<ul style="list-style-type: none"> • WACC overview • Supporting documentation <div>   </div>

Derive customized cost of capital in only 6 steps



Sneak peek into the tool

Full flexibility



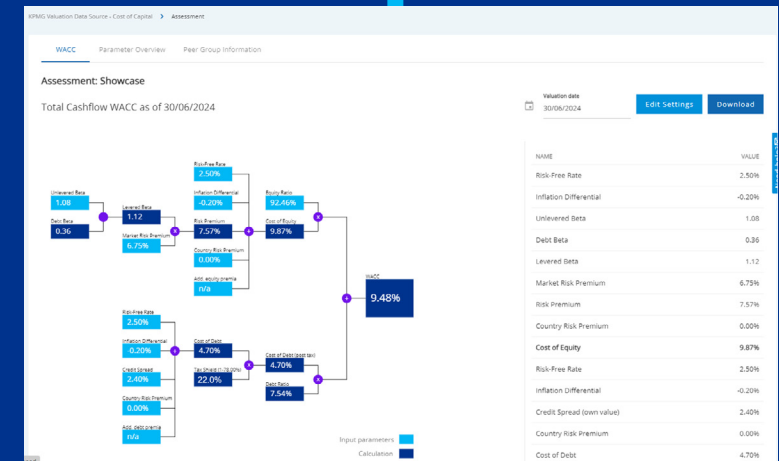
Customers can decide flexibly per parameter whether they want to use calculated data or incorporate their own values into the analysis.

Efficient Input

The app guides users in a few steps to derive the exact cost of capital. In addition to the individual peer group, the calculation and parameters as well as their settings can be adapted to each and every situation.

Transparent Result

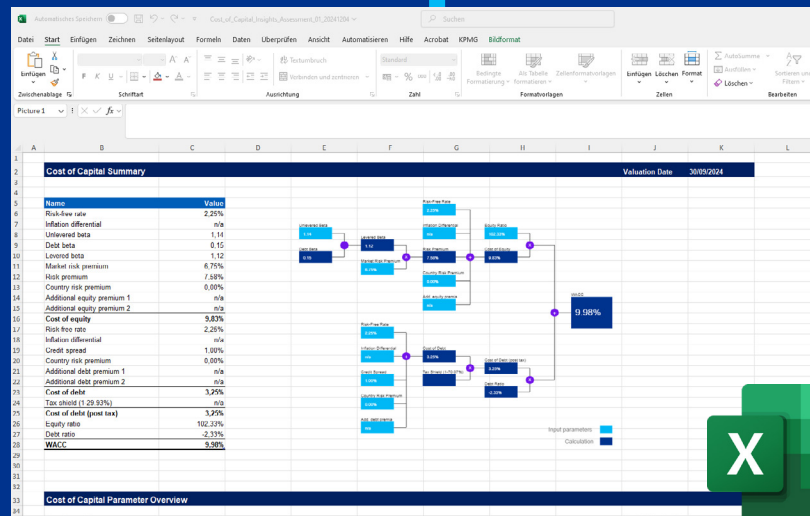
The dashboard not only shows the final result but also all components of the WACC or cost of equity tree.



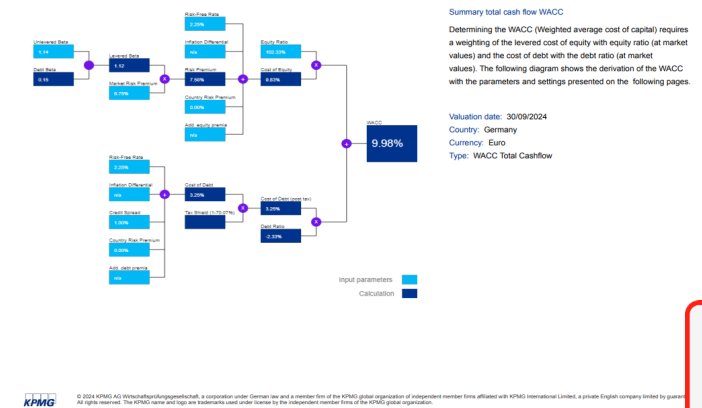
Download

PDF-Export

All data can be exported to a PDF report at the touch of a button and sent to the auditor together with the documentation.




02 Cost of capital summary



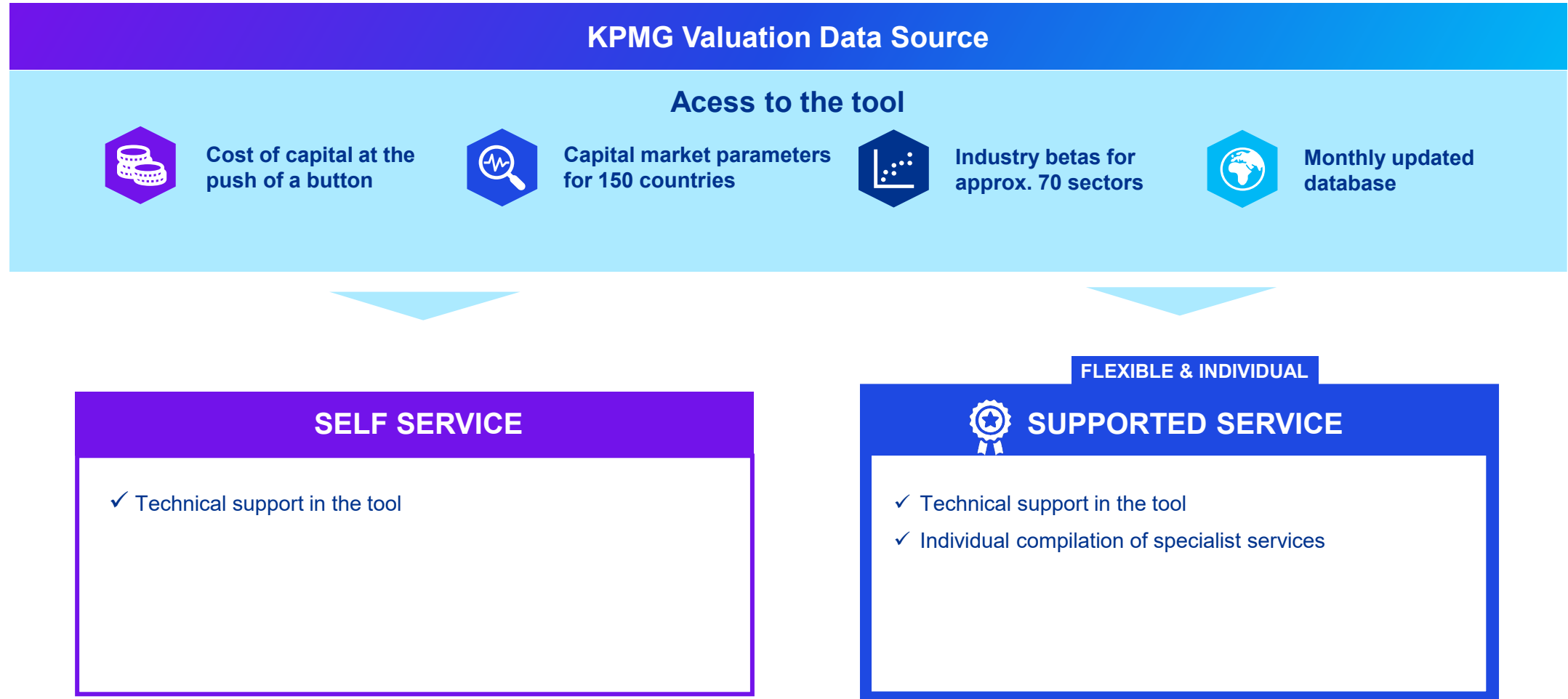
MS Excel export for further processing

For additional independent analyses, it is also possible to download all data in MS Excel format.

Capital Market Data App for efficient analysis of capital market data for multiple countries

Use cases	Input & selections	Output & format
<ul style="list-style-type: none">• IBR• FX-split• Country-specific market parameters• Feeding into client's own systems / spreadsheet	<ul style="list-style-type: none">• Valuation date <i>Select date</i>• Country <i>Select one or multiple</i>• Currency <i>Select one or multiple</i>• Risk-free rate <i>Select duration</i>• Credit Spread <i>Select duration, rating, sector</i>• Build-up approach <i>Select USD vs. EUR</i>	<p>Per country analysis of:</p> <ul style="list-style-type: none">• Base rates• Market risk premia• Inflation differentials• Country risk premia• Credit spreads• Taxes 

Available product service plans



Security & Certifications



External certification

SOC3 / SOC2 / ISO27001
certification External independent
audit (BDO) Continuous internal
reviews



Architecture

Strong encryption
Isolated environments
Auto-scaling infrastructure to
ensure consistent performance
even with erratic usage patterns
Choose your data geography to
minimize latency and optimize
performance



Organization

Ring-fenced ops organization
Documented procedures
Background verification
Approvals enforced in workflow
systems



Controls

Robust control framework
in line with SOC2 and
ISO27001 standards
Controls tested multiple
times per year
Automated monitoring and
logging

Microsoft Azure Data Centres

Your contacts



Dr. Andreas Tschöpel

Partner, Deal Advisory

Valuation

KPMG AG, Berlin

+49 30 2068-1488

atschoepel@kpmg.com



Ken Arminger

Director, Deal Advisory

Digital Products & Services

KPMG AG, Hamburg

+49 40 32015-5898

karminger@kpmg.com



kpmg.de/socialmedia

kpmg.de

The information contained herein is of a general nature and is not intended to address the circumstances of any particular individual or entity. Although we endeavor to provide accurate and timely information, there can be no guarantee that such information is accurate as of the date it is received or that it will continue to be accurate in the future. No one should act on such information without appropriate professional advice after a thorough examination of the particular situation.

© 2025 KPMG AG Wirtschaftsprüfungsgesellschaft, a corporation under German law and a member firm of the KPMG global organization of independent member firms affiliated with KPMG International Limited, a private English company limited by guarantee. All rights reserved. The KPMG name and logo are trademarks used under license by the independent member firms of the KPMG global organization.

Document Classification: KPMG Public