



Step 3: Delta analysis of total emissions reported and default values

In this step, the plausibility of the data provided is checked in the tool and a delta analysis of the total emissions reported and the default values is produced. You can verify the degree of deviation using a kind of traffic light system: An amber value indicates deviations of at least 10 per cent, while a red value indicates deviations of 50 per cent or more.



Delta analysis of total emissions reported and default values; deviations shown in amber/red.

Source: KPMG in Germany, Trade Data Check



Step 4: Generating the CBAM report

At the end of the process, you will receive your final reporting file. All you have to do next is upload it to the CBAM Transitional Registry.

A continuous overview

Your individual dashboard in the Trade Data Check tool allows you to keep track of your imports, countries of origin and suppliers as well as the validated CO₂ values at all times. You can use the integrated filter function to view individual countries or the process status of specific suppliers.

Some or all of the services described herein may not be permissible for KPMG audit clients and their affiliates or related entities.

Contact

KPMG AG
Wirtschaftsprüfungsgesellschaft



Mario Urso
Partner, Tax
Head of Trade & Customs
M +49 171 3130960
murso@kpmg.com



Stephan Freismuth
Director, Tax
Trade & Customs
M +49 175 1188823
sfreismuth@kpmg.com

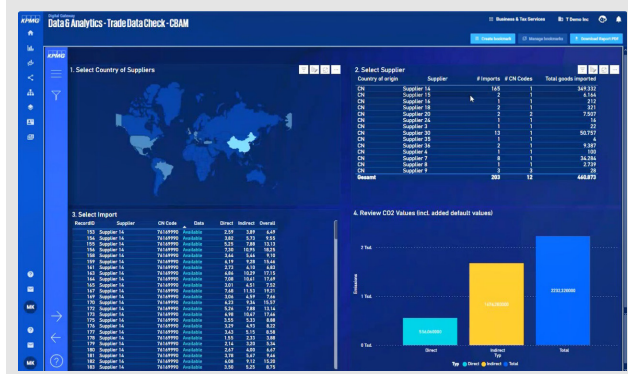
www.kpmg.de

www.kpmg.de/socialmedia



The information contained herein is of a general nature and is not intended to address the circumstances of any particular individual or entity. Although we endeavor to provide accurate and timely information, there can be no guarantee that such information is accurate as of the date it is received or that it will continue to be accurate in the future. No one should act on such information without appropriate professional advice after a thorough examination of the particular situation.

© 2024 KPMG AG Wirtschaftsprüfungsgesellschaft, a corporation under German law and a member firm of the KPMG global organization of independent member firms affiliated with KPMG International Limited, a private English company limited by guarantee. All rights reserved. The KPMG name and logo are trademarks used under license by the independent member firms of the KPMG global organization.



Supplier overview in Trade Data Check.

Source: KPMG in Germany, Trade Data Check

Your benefits at a glance

- Your customs data is evaluated automatically and systematically
- Individualised lists are pre-filled for completion by your suppliers
- The tool performs the entire communication process with your suppliers
- The data submitted is consolidated and validated
- Official default values are automatically added if data is missing
- Your report is generated at the end of the quarter
- You have full transparency over the current process status at all times

Ideally positioned for you

Our experts from customs and digitalisation have worked together to develop and refine our KPMG Trade Data Check CBAM and will be happy to assist you with their knowledge and their interface expertise. Get in touch with us.