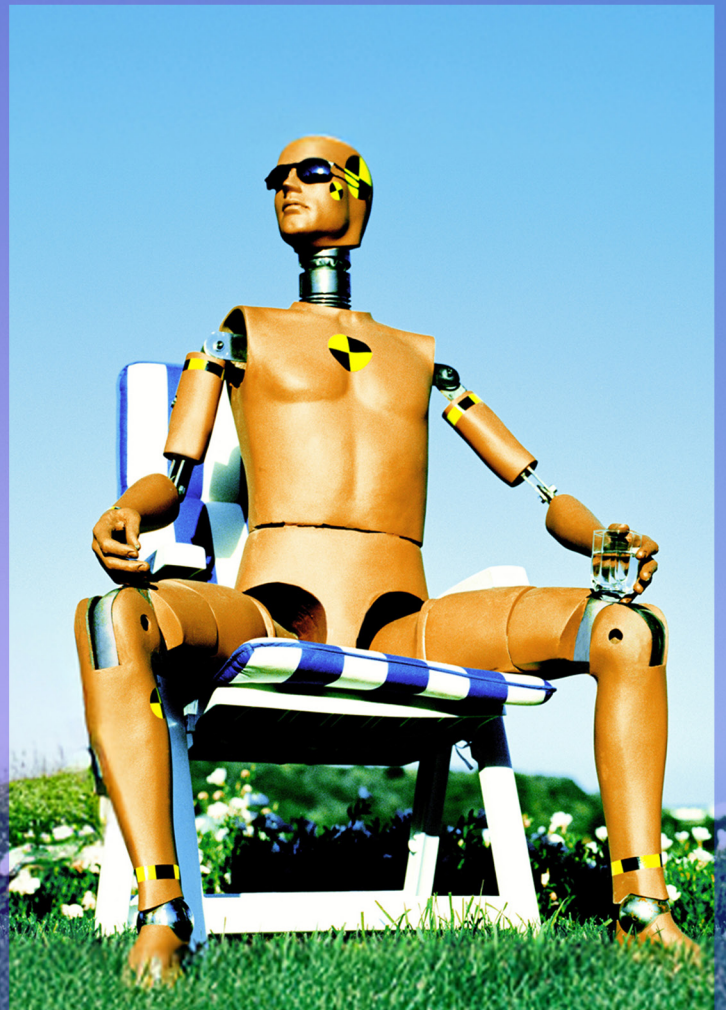




Implementing e-invoicing in a legally compliant, efficient and future-proof manner

Test your AP e-invoicing process using our practical test package and expert support



Structured and reliable testing is essential for the smooth introduction of your electronic invoice processing system. KPMG has developed a practical test package to provide companies with targeted support during the transition and to ensure quality and regulatory compliance. Our test package enables you to check whether your system reliably detects and rejects non-compliant e-invoices. In this way, you can identify errors at an early stage, ensure compliance with the European standard EN 16931, and permanently anchor both technical and functional requirements in your system.

Our test package

Conformity check



Crash testing your implemented e-invoice validation

The test package contains 60 structured e-invoices with deliberately built-in syntax and content errors (UBL and CII; EN 16931-compliant). This package enables you to reliably check whether your system detects incorrect invoices and rejects them in accordance with the rules.

Scope of services:

- 60 incorrect test invoices (UBL, CII)
- 30 minutes of joint discussion (error analysis) and recommendations for next steps

Positive test: reliable processing of compliant invoices

A test package containing more than 100 error-free e-invoices enables you to check whether compliant e-invoices are processed reliably and pass through the system in full. The tests check compliance with the EN 16931 standard and cover the common standard formats, including UBL, CII, ZUGFeRD, XRechnung, and Peppol BIS. Positive testing shows whether the invoices successfully pass XML validation and are correctly transferred to your invoice processing application.

Scope of services:

- More than 100 standard-compliant e-invoices
- Support with common formats (UBL, CII, ZUGFeRD, XRechnung, and Peppol BIS)
- Ideal for system testing and verification

Evaluation assistance: error description package



Error package

We have compiled a catalogue of the relevant error types that may occur during the validation of e-invoices – and we

can support you in translating these error types into language that is easier for your users to understand.

Overview of other e-invoicing services

- End-to-end managed services (outsourcing of e-invoicing processes)
- Support with provider selection
- Implementation of customised solutions
- Check of ERP system readiness

Contact

KPMG AG
Wirtschaftsprüfungsgesellschaft

Ideally positioned for you

Whether it's introduction, implementation, or optimisation: our experts will assist you with all questions relating to e-invoicing from regulatory requirements to the complete digitisation of your invoicing processes.

Benefit from sound advice, tried-and-tested solutions, and a clear focus on efficiency and legal certainty.

Feel free to contact us.



Christopher-Ulrich Böcker

Partner
Indirect Tax Services
T +49 89 9282-4965
cboecker@kpmg.com



Astrid Ras

Director
Indirect Tax Services
T +49 201 455-6781
astridras@kpmg.com



Robert Kis

Senior Manager
Indirect Tax Services
T +49 69 9587-6937
robertkis@kpmg.com

Some or all of the services described herein may not be permissible for KPMG audit clients and their affiliates or related entities.

www.kpmg.de

www.kpmg.de/socialmedia



German Tax Facts App
Important topics, news and events
relating to tax.



The information contained herein is of a general nature and is not intended to address the circumstances of any particular individual or entity. Although we endeavor to provide accurate and timely information, there can be no guarantee that such information is accurate as of the date it is received or that it will continue to be accurate in the future. No one should act on such information without appropriate professional advice after a thorough examination of the particular situation.

© 2025 KPMG AG Wirtschaftsprüfungsgesellschaft, a corporation under German law and a member firm of the KPMG global organization of independent member firms affiliated with KPMG International Limited, a private English company limited by guarantee. All rights reserved. The KPMG name and logo are trademarks used under license by the independent member firms of the KPMG global organization.