



salesforce

Take the fast track to a more sustainable future

Accelerate sustainability reporting with KPMG and Salesforce Net Zero Cloud™

KPMG and Salesforce® are dedicated to delivering sustainable, enterprise-level solutions that support long-term climate initiatives, regulatory compliance, and shareholder value.

Speed carbon accounting from months to weeks

Emissions accounting and reporting can be a huge time commitment—even a barrier to action—for companies that want to fully drive progress towards their environmental goals. Without adequate tools, their sustainability professionals collect and consolidate data manually via spreadsheets, and the company can struggle to achieve a verified and comprehensive view of their carbon footprint. Reports can also take months to generate and might require revisions if questions arise from stakeholders and regulatory agencies.

Salesforce Net Zero Cloud is an established platform that helps companies quickly integrate, track, and analyze reliable environmental data. The platform includes calculation methodologies following the Greenhouse Gas (GHG) Protocol as well as preloaded datasets from the U.S. Environmental Protection Agency (EPA), The Intergovernmental Panel on Climate Change (IPCC), and other entities to accurately assess carbon accounting for companies.

With Salesforce Net Zero Cloud, a company's scope 1, 2, and 3 emissions data are collected, organized, and visualized in dynamic reports and dashboards—both for audit purposes and for executive engagement. Decision makers can easily analyze emissions associated with energy usage and company travel, track and understand their supply chain emissions footprint, formulate a climate action plan from a single source of truth, and then take tangible steps to reduce emissions to drive towards net zero goals.

Efficient, controlled implementations with KPMG Powered Enterprise

KPMG Powered Enterprise is a combination of leading practices and processes, proven technology solutions, and a next-generation delivery framework to streamline the implementation of enterprise-level applications, such as Salesforce Net Zero Cloud. These accelerators enable us to rapidly build and deploy solutions that meet our clients' needs while increasing the speed to market.

KPMG professionals offer deep experience in working with the entire lifecycle of GHG data management, from collection to final output. Our capabilities include normalizing and structuring varied environmental data inventories in adherence with GHG protocols, configuring data ingestion pipelines and APIs to gather data from disparate systems, and adhering to compliance standards to help drive progress towards sustainability goals. We have also helped organizations to gain new insights based on environmental data that range from defining net-zero roadmaps to supporting global carbon credit strategies.



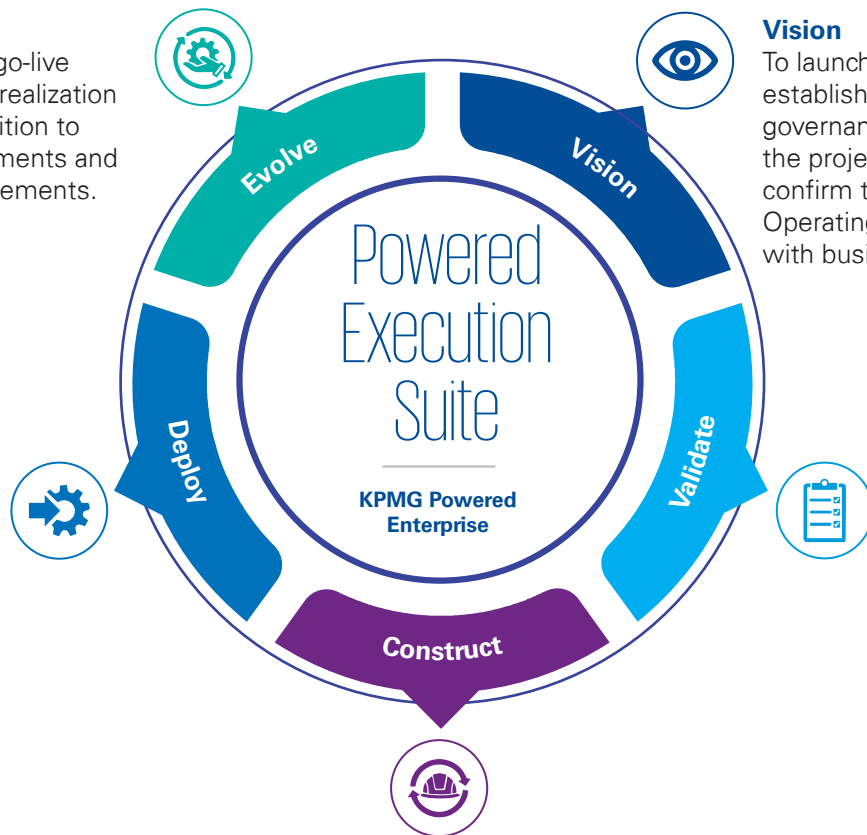
With KPMG Powered Enterprise, we support a Salesforce Net Zero Cloud implementation through an execution suite of integrated tools and methods, using an accelerated phased approach:

Evolve

To complete post go-live support and value realization analysis, and transition to on-going enhancements and continuous improvements.

Deploy

To gain user acceptance of the solution, deliver training to end users and implement the Target Operating Model and related business as usual (BAU) support.



Vision

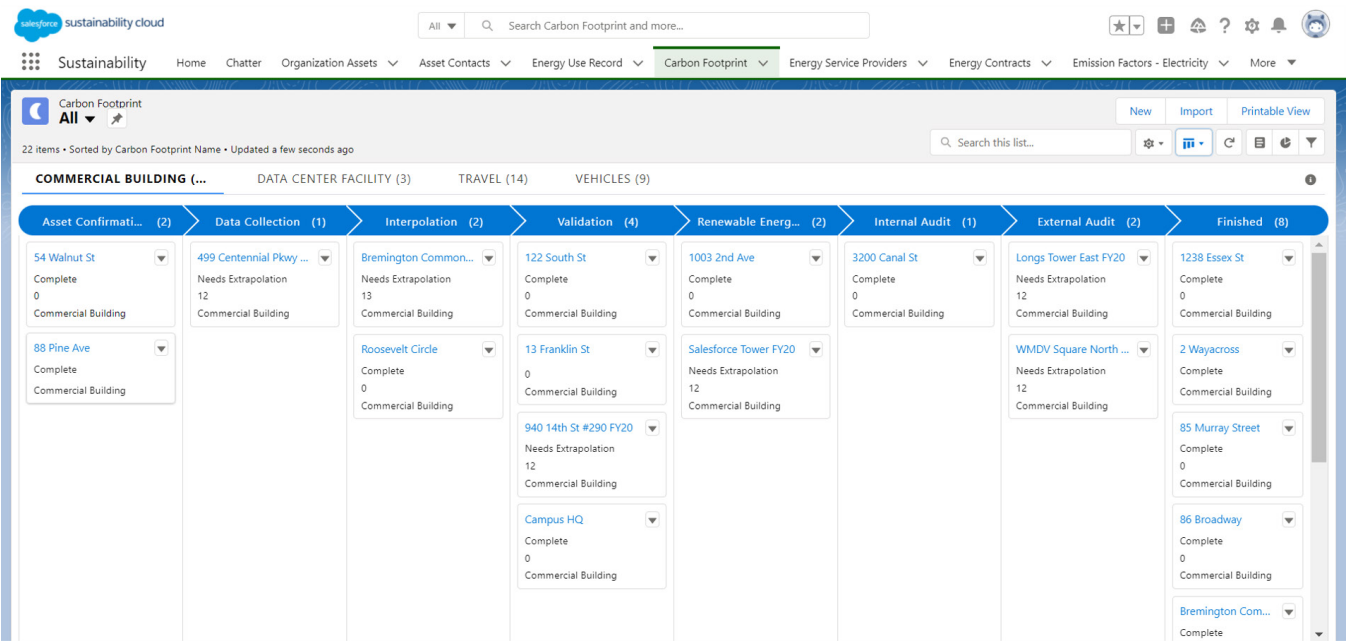
To launch the project, establish the project governance, confirm the project baseline and confirm the high-level Target Operating Model is aligned with business strategy.

Validate

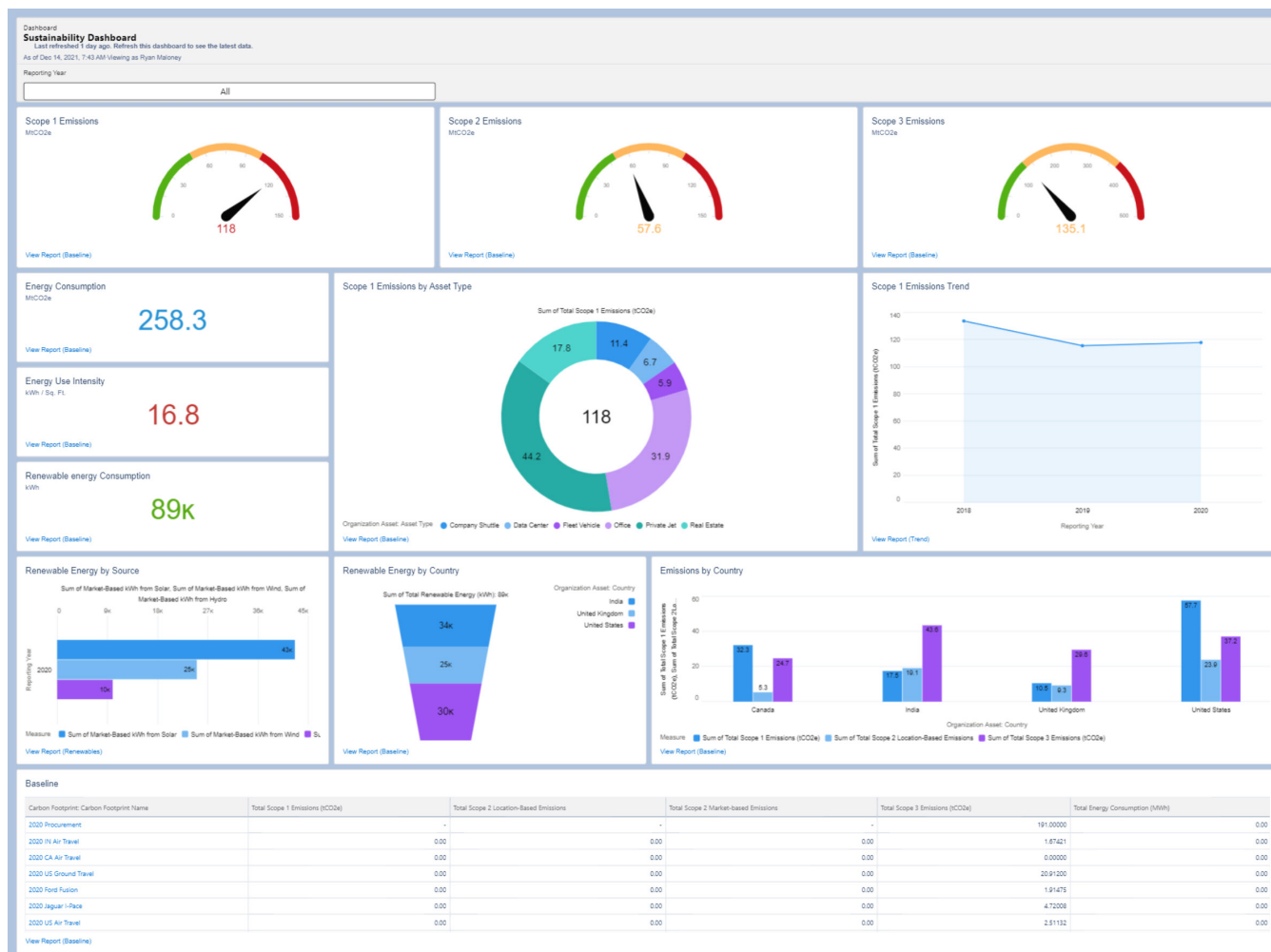
To leverage validate and document the comprehensive to-be Target Operating Model design layer components and finalize the solution design.

Construct

To build and test the technology solution and design layers of the Target Operating Model using an iterative testing process and prepare for user acceptance testing (UAT) and deployment.



Salesforce out-of-box feature to collect, calculate, and verify sustainability data



KPMG custom configured dashboard that enables users to track progress and key performance indicators, drill down by geography or other filters, compare data, and view trends over time

Benefits

Working together, KPMG Advisory services and Salesforce solutions help companies drive their climate actions forward at multiple levels:

- Producing verifiable data to understand a company's environmental impact
- Conducting carbon accounting audits within weeks instead of months
- Tracking energy patterns and emission trends, and then evaluating environmental impact based on rich data visualization and powerful analytics

- Proving to customers, employees, and investors a corporate commitment to carbon-reduction and sustainable practices
- Giving regulatory agencies a clear snapshot of a company's environmental impact activities.

Talk with KPMG today

You can learn more about how KPMG and Salesforce can help you realize the full potential of your strategic environmental initiatives.

Salesforce and Salesforce Net Zero Cloud and are trademarks of Salesforce, Inc. and are used here with permission.