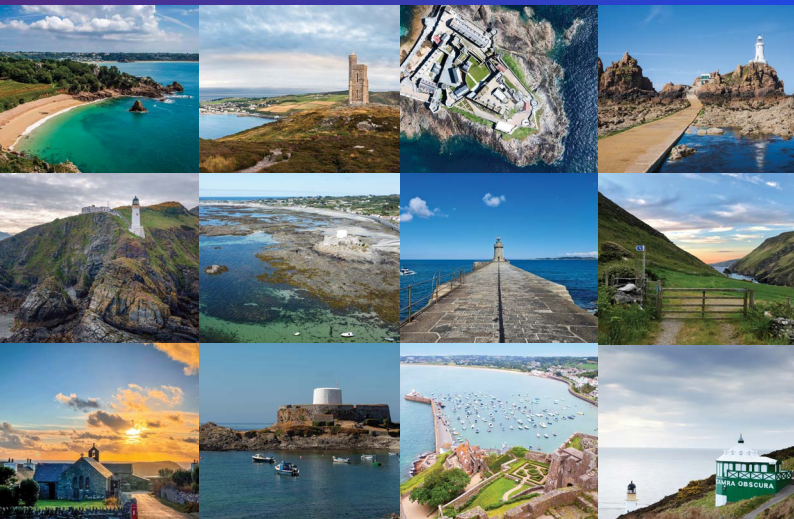




Anniversary Celebrations

KPMG in the Crown Dependencies



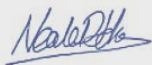
A message from our Senior Partner

I am privileged to lead such a talented group of people across the Crown Dependencies. Our ethos has always been about having senior expertise on the ground in each of our islands to respond to client needs, whilst also being able to lean on our global network.

We are proud of our combined history – 227 years of association and 190 years of having offices on these islands, building relationships and embedding ourselves in these communities. We have trained and nurtured hundreds of accountants into industry, opined on many consultations and economic issues and have committed significant time and resources to community initiatives over this time.

Our firm has been constantly evolving since it started, and as the professional services environment continues to change, we aim to be at the forefront alongside our colleagues in the KPMG Islands Group and our wider network. Our firm will continue to evolve, but one thing that won't change is our local DNA.

Thank you for your support over the years – we look forward to working with you for a long time to come.



Neale Jehan
Senior Partner, Crown Dependencies

Our Origins to the Second World War

Our earliest traces within the Crown Dependencies can be found in the Channel Islands, dating back to the late 19th Century.

In 1884 the States of Guernsey chose to appoint an independent firm to audit their accounts. After making progress with an audit committee, they eventually used their London connections to find a qualified accountant for the job. This was via a former Bank of England governor who also happened to be a Guernseyman.

Then in 1891 – some 132 years ago – Maurice Black first visited the island to sign the States accounts and advise improvements on how they kept their books. Black would continue to visit Guernsey each year, and in 1899 he set sail from Southampton with his wife aboard the SS Stella.

Disaster struck, however, when heavy fog caused the SS Stella to collide with the Casquets rocks roughly eight miles north-west off the island of Alderney. With not enough lifeboats to save everyone aboard, Maurice Black and his wife were among the nearly 80 passengers and crew who perished along with the ship.

Despite his tragic passing, Maurice Black's name lived on as his accountancy firm 'Black, Geoghegan & Till' continued to work remotely with the States of Guernsey well into the 20th Century. And in 1923, one hundred years ago, the firm first registered with the ICAEW with a permanent office in Guernsey.

REPORT ON THE STATES ACCOUNTS FOR 1890.

Bureau des États, Guernesey, ce 15 Avril 1891.

MONSIEUR,

J'ai l'honneur de vous envoyer sous pli le rapport du Mons. Maurice Black, *Chartered Accountant*, sur les comptes du Supérieur de la Chaussée pour l'année 1890, ledit Mons. Black ayant été chargé par le Comité d'examiner et vérifier les susdits comptes, en conformité avec le vote des États du 28 *Janvier* 1891.

Agréez, Monsieur, etc.,

JOSEPH COLLINGS,

Président du Comité pour l'examen des Comptes des États.

Messire Edgar MacCulloch, Chevalier,

Baillif,

et Président des États de l'île de Guernesey.

To the Audit Committee of the States of Guernsey.

GENTLEMEN,

I beg to report that I have examined the Accounts of the States of Guernsey for the year 1890, and have found them correct. The cash, &c., in the hands of the Assistant Supervisor was counted by the Supervisor on 31st *December*, as well as at frequent intervals during the year. The books are accurately and well kept.

II.—1891.

The Balances in favour of the States for the year on the various accounts are as follow :—

General Account	£404	0	2
Harbour of St. Peter-Port	1,380	19	5
„ St. Sampson's	1,421	0	1
Fountain Street	2,538	13	11
Total.....	£5,744	13	7

And the Balances due to the Charities are as follow :—

De La Court Fund	£253	13	11½
Sir Wm. Collings Fund	116	12	9
De Lisle Fund	2	6	0
Col. Priaulx Prize Fund	5	0	0
Total.....	£377	12	8½

I have the honour to remain

Your very obedient servant,

MAURICE BLACK.

*8, Old Jewry, London, E.C.,
10th April, 1891.*

Second World War to the 1970s

Having formally established itself in Guernsey in 1923, the firm appointed its first permanent and local representative, Harry Broughton, in 1926. It was a position he would hold throughout the eventful decades to come.

Broughton would turn out to be the only practising accountant in the island when it became occupied by the Germans during the Second World War. Despite half the island's population evacuating to England, the firm remained in operation throughout the occupation.

When Hitler decided to deport Channel Islanders to German camps as retaliation for his own military losses, the States requested an exemption for Broughton due to his status as their auditor and "the only qualified accountant remaining in Guernsey". While his exemption was granted, thousands of other remaining Guernsey and Jersey islanders were not so fortunate.

After the war ended, Broughton remained in Guernsey for the rest of his life and the States accounts continued to be audited by Black, Geoghegan & Till.

REGISTRATION FORM.

Denoting Letter and Number of Place of Issue to be entered here

Two copies of this Form must be completed by every person. If you are in doubt as to how to complete this Form, the Constable or a Douzenier of your Parish will help you.



For Official use only.

No. 280

A1

- (a) Surname in block letters followed by Christian names. **BROUGHTON HENRY GEORGE**
- (b) Ordinary Postal address, including Parish. **MOUNT ROAD, ST PETER PORT**
- (c) Date of Birth. **2 November 1900**
- (d) Place of Birth. **ENGLAND**
- (e) Nationality*. **BRITISH**
- (f) Occupation. **CHARTERED ACCOUNTANT**
- (g) Single, married, widow or widower. **MARRIED**
- (h) Colour of hair. **BROWN**
- (i) Colour of eyes. **GREY**
- (j) Any physical peculiarities, such as a scar, limp, etc. **NO**
- (k) Have you served in any of His Britannic Majesty's Armed Forces? If so, write R.N., R.N.R., Army, R.A.F., Royal Guernsey Militia, or as is appropriate and give your rank on retirement and the date of retirement. **NO**
- (l) Are you on a Reserve of Officers of His Britannic Majesty's Armed Forces? If so, state which Reserve. **NO**
- (m) Are you, not being on a Reserve of Officers, on the Reserve of any of His Britannic Majesty's Armed Forces? If so, state which Reserve. **NO**

*As regards question (e), if you are a person possessing dual nationality, give both nationalities.

RELATIONSHIP	NAME	RANK	BRANCH OF SERVICE
(n) Have you a husband, son, grandson, brother, father, nephew, uncle, or first cousin actually serving in any of His Britannic Majesty's Armed Forces? If so, give his relationship to you and his full name and rank and state which branch (such as R.N., Army, R.A.F., or as the case may require) of the Forces he belongs to. Do not give his Unit or any particulars of his last known whereabouts.	No.		

If this space for your answer is insufficient, complete your answer on the reverse

RELATIONSHIP	NAME
(o) Have you a husband son, grandson, brother, father, nephew, uncle or first cousin who is, to your knowledge, on a Reserve of Officers of His Britannic Majesty's Armed Forces? If so, give his relationship to you and his full name and address.	No.



- (p) Having completed the answers to the above questions (and where the answer to any of them is in the negative, the word "No" must be written) take this Form to a Constable or Douzenier of your Parish (in the case of Sark, you must take it to the Seneschal) and write your usual signature in his presence and add the date.

Your signature must be witnessed by the Official before whom it is signed and he will sign his name and add its official title and the name of the Parish of which he is an Official.

(Signature)

(Date)

Witnessed by

DOUZENIER

(Signature)

(Title)

ST. PETER PORT

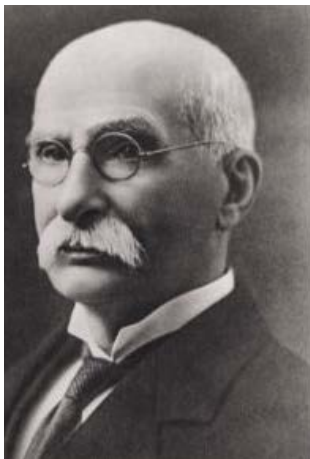
(Name of Parish)

Identity Card issued by

(Official issuing Identity Card to insert his initials.)



Piet Klynveld



William Barclay Peat



James Marwick



Reinhard Goerdeler

Emergence in Jersey and the Isle of Man

In 1972 Peat Marwick Mitchell & Co. became associated with the firm, and a year later they opened an office in Jersey. The firm saw continued growth from this point onwards, both locally and internationally.

Then in 1978 the Isle of Man office first opened to meet the needs of clients establishing new businesses in the island. It was originally set up under the guidance of the Liverpool office, as part of the UK firm's Northwest regional practice. The branch grew steadily throughout these early years, appointing its first resident partner in 1981.

Two years later, in 1983, the Isle of Man office held its first partner's meeting where the first Partnership Deed was signed and subsequently adopted. As the financial services sector in the Isle of Man began to take off, the firm merged with J G Fargher & Co in 1986, cementing it as one of the island's leading audit and accounting firms.

Meanwhile our Channel Islands operations would similarly thrive. In 1981 the Guernsey and Jersey branches both became full members of Peat Marwick International – a name that would become one half of the brand we know today.

The Jersey practice in particular saw rapid growth during the 80s, largely because of several bank mergers at the time. Soon they would be handling around 40% of all bank audits in the island.

By 1987, Peat Marwick International and Klynveld Main Goedeler had merged to create what was then the world's largest accounting firm, KPMG – or Klynveld Peat Marwick Goedeler. Following this, the Guernsey and Jersey branches continued together as KPMG, the Channel Islands member firm.



Formation of our island groups

After a period of unprecedented economic growth, the turn of the millennium saw vast changes in the international business landscape, with rapid globalisation and economic uncertainty remaining prevalent to this day.

In 2002, several KPMG partners from various island jurisdictions – including the Isle of Man and Channel Islands – met in Bermuda to form what is now known as the 'KPMG Islands Group'.

A subregion of KPMG's wider network, comprising of financial service centres from around the world – it includes the Cayman Islands, Malta, Bermuda, Bahamas, British Virgin Islands, Jamaica, Trinidad, Barbados, St Lucia, and of course our own Crown Dependency islands.

Then in 2020, our Crown Dependency islands merged to create KPMG in the Crown Dependencies. Last year we celebrated twenty years of association as KIG firms, now employing 110 partners and approximately 2,600 people across the 12 islands.

We've come a long way from balancing the States of Guernsey's books all those years ago.



Our future

With such a rich history behind us we now look to what lies ahead, as we continue to grow and strengthen our relationships with the island communities we serve. We have launched our local IMPACT plan, doubling down on our key commitments such as aiming to achieve net zero by 2030, but also driving purposeful business practices and good corporate citizenship.

As part of our anniversary celebrations, we have undertaken a substantial number of projects across the Crown Dependencies. These include supporting local food banks this winter and working with schools on our Rainbow Allotment initiative to teach children about nature. We also have further projects planned within education and the arts.

Our future ultimately lies with our people. And it's through our collective vision and sustainable decision-making that will determine the next chapter of our story. We are proud to be integral to our islands, locally owned and operated and we're excited to see what lies ahead. We thank you for joining us on that journey so far and look forward to your support in the future.

A message from our Partners

"KPMG in Jersey has always been committed to supporting the growth and development of the island's economy as well as being actively involved in the local community, and we are honoured to have played a role in shaping Jersey's landscape over the past five decades. We look forward to celebrating this milestone with our clients, colleagues, and the wider community and to continuing to build on our legacy for many years to come."



Andy Quinn
Partner
Jersey

"It's a privilege to be celebrating 40 years of success in the Isle of Man. To have begun life as an expansion of the UK's Northwest regional practice to becoming one of the island's leading audit and accounting firms is a testament to the amount of talent that has helped our office grow over the decades. I'm delighted to be celebrating this milestone with clients, colleagues and the wider community, as we look ahead at forging ever-closer relationships with our islands."



Russell Kelly
Partner
Isle of Man

"Our longevity in Guernsey is a testament to the trust and confidence our clients have placed in us over the years, and our commitment to excellence and innovation. We have a long and proud history of supporting the island's businesses and institutions. We are excited to celebrate this milestone with our clients, colleagues, and the community, and to continue to build on our legacy of excellence for many years to come."



Antony Mancini
Partner
Guernsey

A message from our Global Chairman & CEO

100 years in Guernsey, 50 years in Jersey and 40 years in the Isle of Man—milestones that should make everyone incredibly proud. They represent decades of hard work, perseverance, and dedication by so many and stand as a reminder that we're all part of something bigger than any one of us.

Together, across the Crown Dependencies, you've all had a hand in achieving great success for our clients, helping our communities become stronger, and building a firm with great people doing extraordinary things. I have no doubt that all of you and our entire network will achieve even more success for many decades to come—on behalf of each other, our clients, and for society.

Here's to all of you! And thank you for all that you do to make KPMG this incredible place. Together. For Better.



Bill Thomas
Global Chairman & CEO

100 YEARS
In Guernsey

50 YEARS
In Jersey

40 YEARS
In the Isle of Man

This booklet has been printed using 100% recyclable material and in turn is 100% recyclable.

© 2023 KPMG in the Crown Dependencies is the business name of a group of Jersey and Isle of Man limited liability entities each of which are member firms of the KPMG global organisation of independent member firms affiliated with KPMG International Limited, a private English company limited by guarantee. All rights reserved.

"KPMG Islands Group Ltd." (also referred to as "KPMG Islands Group" or "KIG") is a Cayman Islands Company and a member firm of the KPMG global organisation of independent member firms affiliated with KPMG International Limited, a private English company limited by guarantee. KPMG Islands Group Ltd. provides no services to clients. All rights reserved.