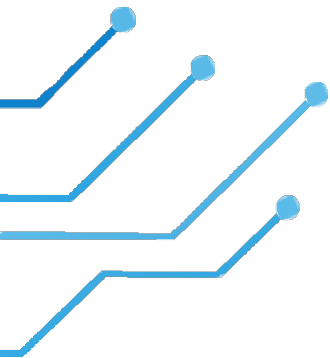




Travel at the speed of ideas

KPMG Global Immigration Expert,

an online knowledge tool for assessing immigration requirements worldwide, making the transfers of your globally mobile employees faster and easier. One solution for assignments, business trips, international projects and sending employees to work permanently around the world. With just a few clicks KPMG Global Immigration Expert provides you an overview of immigration requirements, including key timelines, red flags and typical document requirements.



Anticipate tomorrow. Deliver today.

kpmg.com/Fl/immigrationexpert



Your support for
planning transfers
globally



Helps to streamline
immigration
processes



Online access
24/7 globally



Instant assessment
of immigration
situations



One point of
contact for further
immigration
support

Are you planning a transfer abroad?



Fast and easy
solutions with
KPMG Global
Immigration
Expert



Access online and answer
background questions

- Employee's citizenship
- Destination country
- Duration of stay
- Work activity



Get an overview of the
immigration requirements

- Process overview
- Duration
- Document list
- Red flags

KPMG Global Mobility Services and our local immigration professionals
are here to create effective solutions for your global mobility needs.

Contact us via immigrationexpert@kpmg.fi or learn more at
kpmg.com/FI/immigrationexpert

