



KPMG Insurance Regulatory



KPMG Insurance Regulatory Team



Brian Morrissey

Partner
Actuarial



Jean Rea

Partner
Head of Actuarial



Niall Naughton

Partner
Head of Insurance



Ian Nelson

Partner
Head of Financial
Services & Regulatory



Jackie Hennessey

Partner
Risk Consulting



John O'Donnell

Managing Director
Insurance Regulatory



Leticia Cashin

Director
Insurance Regulatory



Marie Johnston

Associate Director
Insurance Regulatory



Rose Kyle

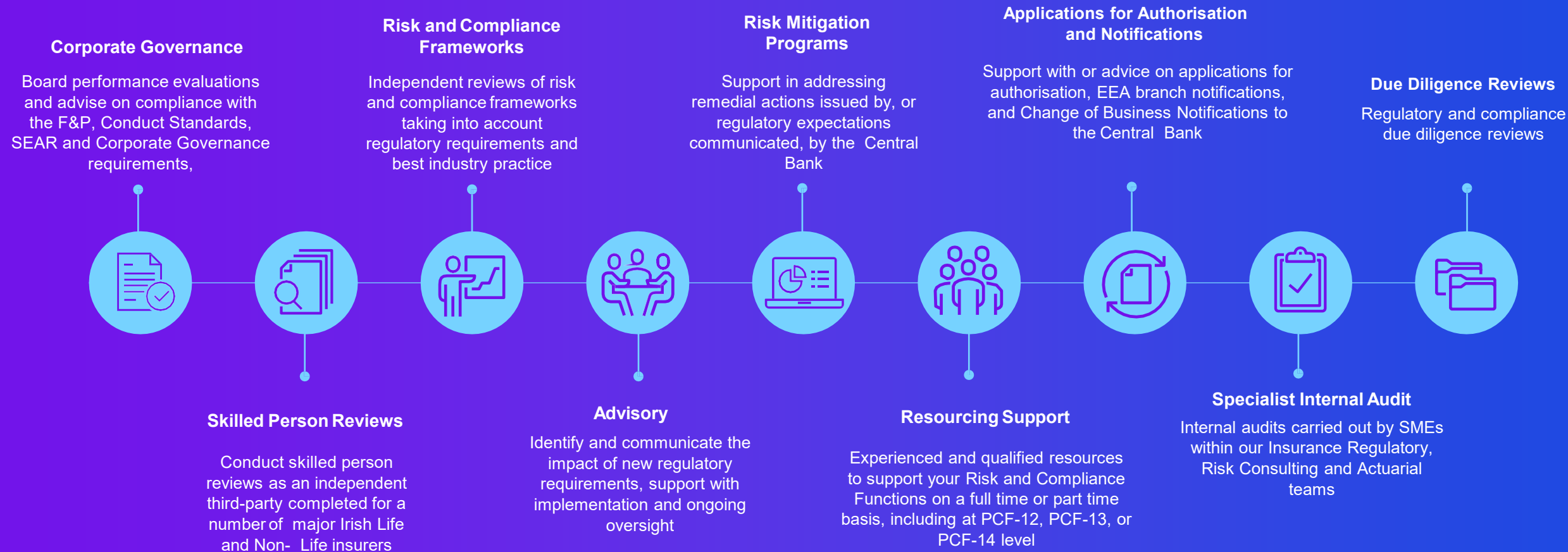
Associate Director
Insurance Regulatory



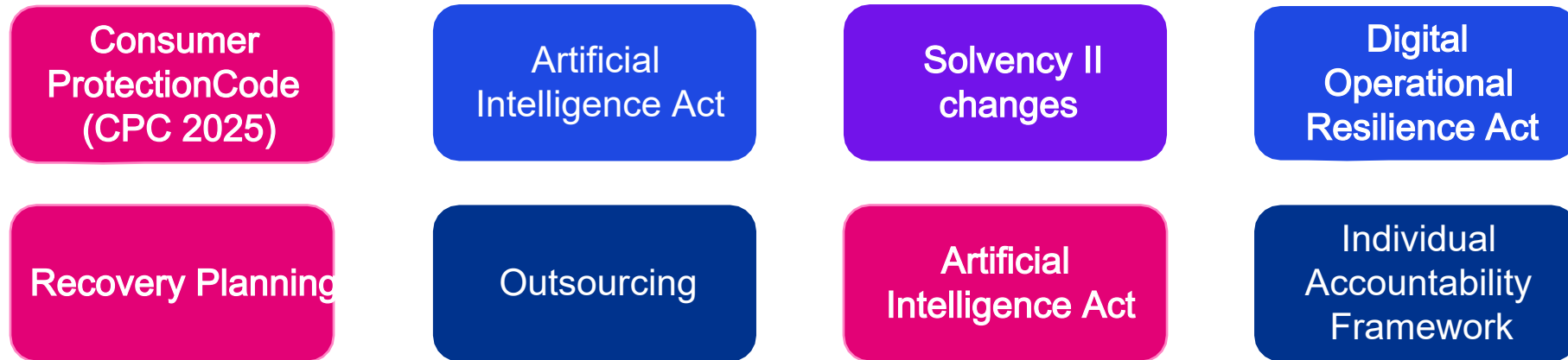
Rory Fenton

Manager
Insurance Regulatory

Insurance Regulatory – Key Solutions



Hot Topics and Regulatory Horizon Scanning



The Insurance Regulatory team work together with KPMG specialist teams (Risk Consulting, Management Consulting, Audit, Actuarial, Sustainable Futures) to provide solutions to clients.



Some or all of the services described herein may not be permissible for KPMG audit clients and their affiliates or related entities.



kpmg.ie

The information contained herein is of a general nature and is not intended to address the circumstances of any particular individual or entity. Although we endeavor to provide accurate and timely information, there can be no guarantee that such information is accurate as of the date it is received or that it will continue to be accurate in the future. No one should act on such information without appropriate professional advice after a thorough examination of the particular situation.

The KPMG name and logo are trademarks used under license by the independent member firms of the KPMG global organisation.

© 2025 KPMG, an Irish partnership and a member firm of the KPMG global organisation of independent member firms affiliated with KPMG International Limited, a private English company limited by guarantee. All rights reserved.

Document Classification: KPMG Public