



eDiscovery hub

Advisory

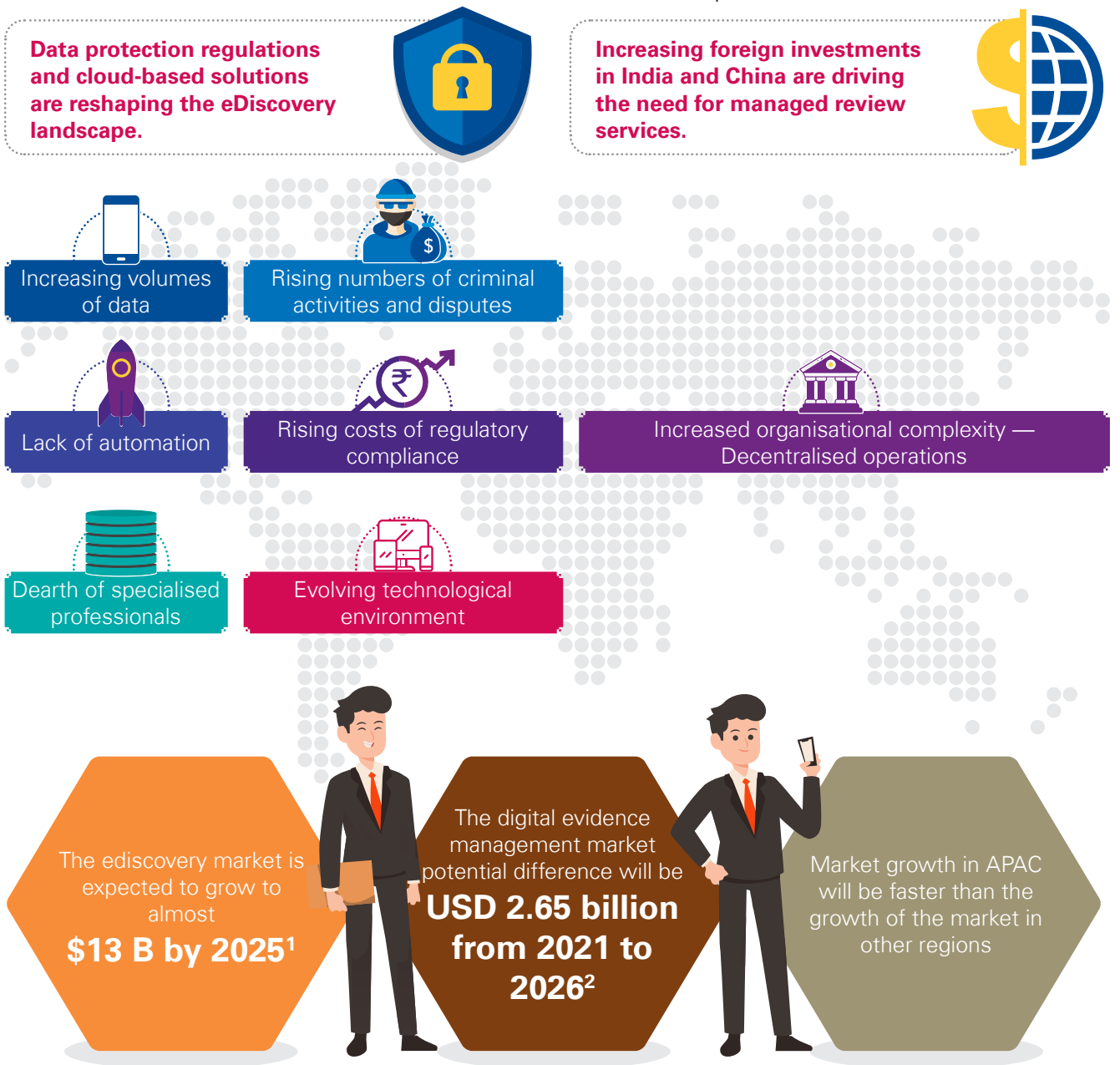
kpmg.com/in



eDiscovery | Global landscape

In order to manage risks and costs, it is important to manage the electronically stored data effectively. Information comes in all types of formats such as e-mails, chats, paper, audio/video files, and databases. In order to identify, preserve, collect, review and analyse such data, it is important to identify the source - laptops, desktops, smartphones, servers, backup tapes and cloud. This can present many challenges.

Electronic discovery (eDiscovery) is an integral part of judicial and compliance processes across the globe. Companies and law firms may be required to produce all relevant data while facing litigation process, regulatory scrutiny or investigations, or even as part of a due diligence exercise. The most common challenges faced in these situations are due to the large size of data and the ever increasing number of file types. Failure to do so may result in penalties, commercial damages, loss of brand value and other serious consequences.



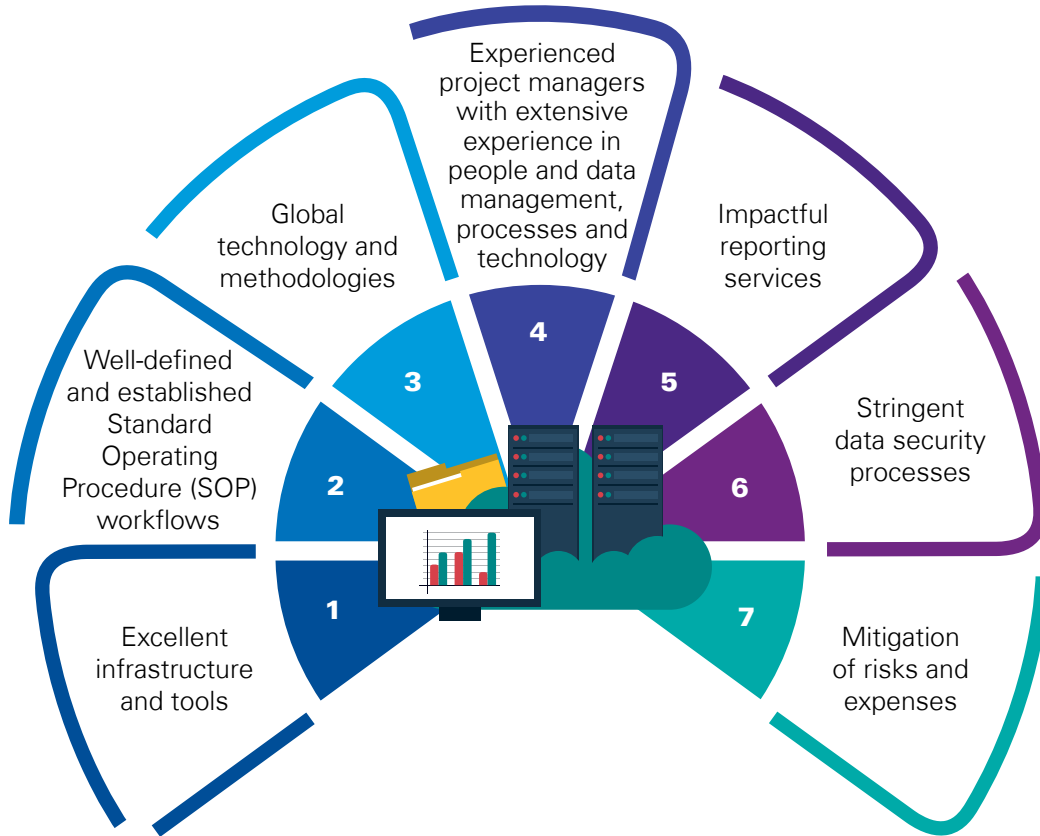
1. 2021 Ediscovery cloud adoption report, Everlaw, PC Newswire, July 2021

2. Digital Evidence Management Market Size to Grow by USD 2.65 billion, Technavio, Dec 2021

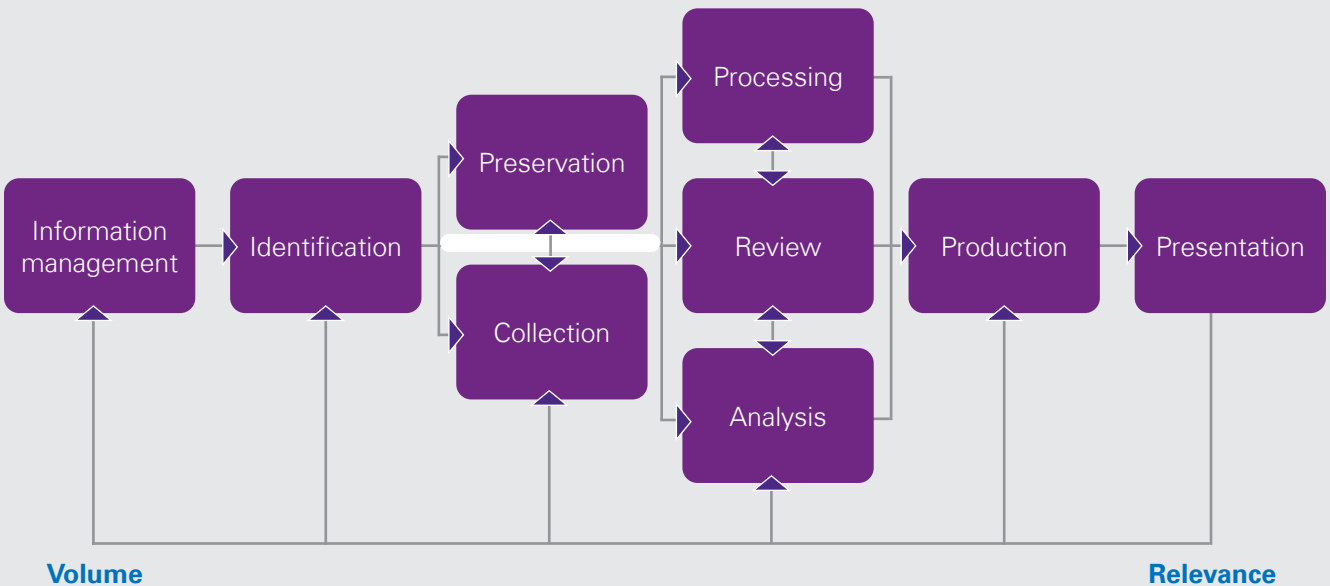
3. Digital Evidence Management Market Size to Grow by USD 2.65 billion, Technavio, Dec 2021

KPMG in India's eDiscovery hub

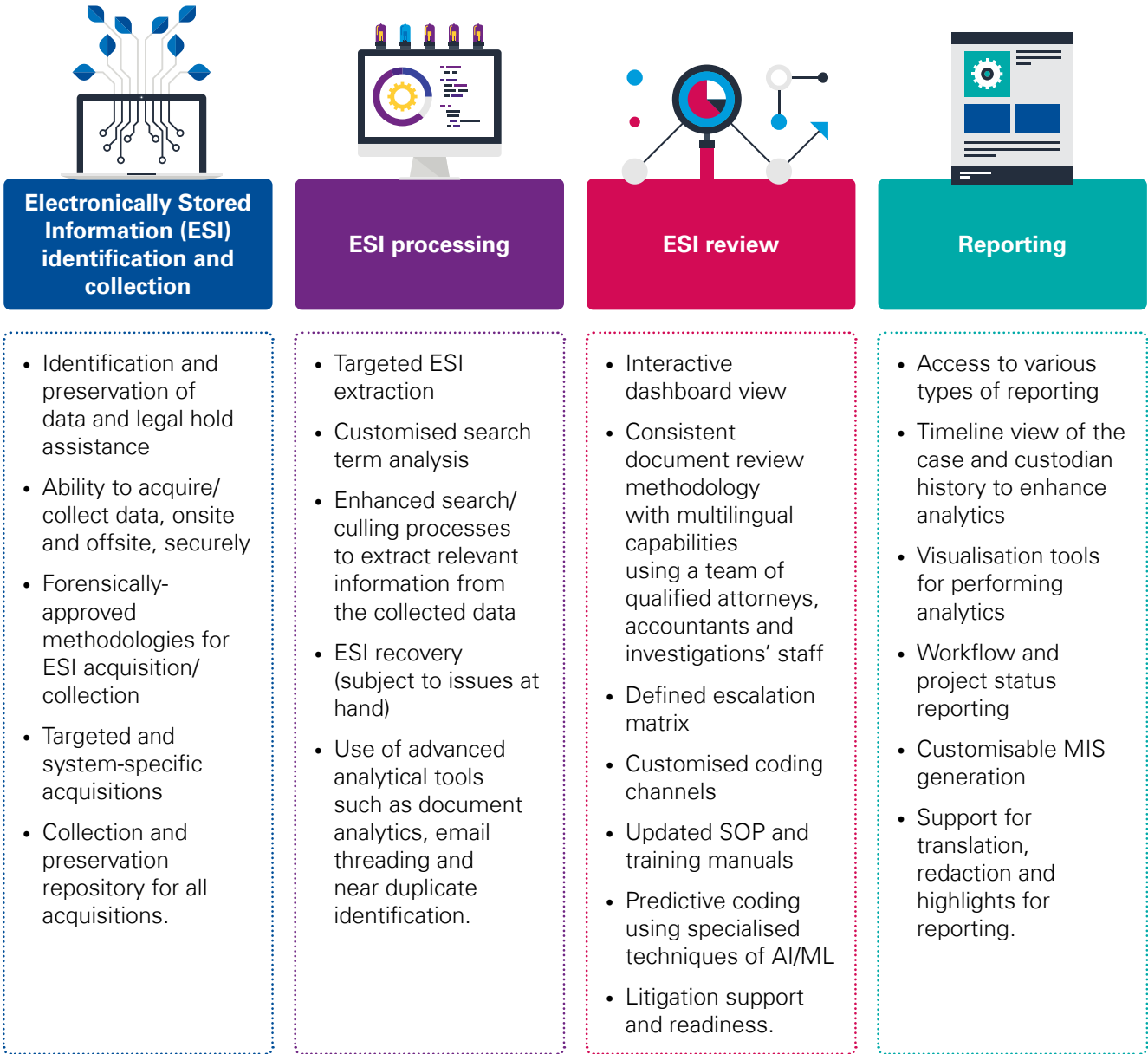
KPMG in India's eDiscovery hub provides:



EDRM reference model



eDiscovery hub — Core services



Engagement experiences

Client: A multidisciplinary consulting and engineering firm

Issue

- Allegation of funds being routed from the UAE entity to its Indian subsidiary for payments to government officials for obtaining permits
- Preservation of IT assets provided to the custodians.

What we did

- Identified and acquired potentially relevant sources of ESI including laptops, email servers, file server
- Provided access to reviewers from different locations and supported them around the clock
- Reviewed relevant data by applying filters and data culling methods.

Key output

- Identified payments that were processed towards agency fee potentially to soliciting business from government clients in the UAE
- Identified potential permit fees and facilitation charges to various authorities to obtain approvals relevant to projects
- Identified the extent of such practices and employees potentially involved.

Scope of work : Over 50 custodians More than 450 GB data

Client: A heavy machinery manufacturing company

Issue

- Allegation of potential involvement of employees of the central procurement department and accepting bribes for contracts awarded and other misconduct
- Additional suspected individuals identified through field enquiries.

What we did

- Identified and acquired devices allocated to 25 suspected individuals recognised during field enquiries
- Provided access to reviewers from different locations and support them around the clock
- Reviewed ESI for relevance and catalogued into various issues.

Key output

- Identified relevant evidence of quotation fabrication and vendor favouritism
- Identified the extent of such practices and employees potentially involved through review of ESI

Scope of work: Over 25 custodians More than 500 GB data

Why choose KPMG in India?



Data confidentiality and security

- Cybersecurity certifications
- Controlled access to data and enhanced anti-virus protections
- Disaster recovery mechanisms
- Highly secure infrastructure and data protection protocols
- All entities of KPMG in India stand certified for ISO 22301:2019. Awarded by British Standards Institution



Specialised skillsets

- Project management capability and process controls
- 125 lawyers/accountants with subject matter expertise
- Professionals formerly trained in Canada and U.S.A
- CEH, CHFI, CISA, MCSE, CCNA including Relativity certified professionals



Agile approach

- Excellent client service — short response times
- Ease of access and client interfacing
- Customised eDiscovery offerings
- Instant fulfilment of various in-house staffing and training needs
- Tools and technology used: Encase, Nuix, Relativity and Intella



Scalable, in-house capacity, linguistic skills

- No subcontractors or third parties
- Global reach with multi-linguistic capabilities
- Ability to review and benchmark litigation readiness
- Assistance with production of documents



Initiatives

- Adoption and investment in machine learning and artificial intelligence
- Continuous improvements in business and operational processes
- Innovations based on advanced technologies leading to enhanced analytical capabilities



KPMG in India contacts:

Vijay Chawla

Partner and Head

Risk Advisory

M: +91 80 6833 5509

E: vschawla@kpmg.com

Jagvinder S. Brar

Partner and Head

Forensic Services

T: +91 124 336 9469

E: jsbrar@kpmg.com

Kirit Amichandwala

Director

Forensic Services

M: +91 99205 22605

E: kirita@kpmg.com

home.kpmg/in

Follow us on:

home.kpmg/in/socialmedia



The information contained herein is of a general nature and is not intended to address the circumstances of any particular individual or entity. Although we endeavour to provide accurate and timely information, there can be no guarantee that such information is accurate as of the date it is received or that it will continue to be accurate in the future. No one should act on such information without appropriate professional advice after a thorough examination of the particular situation.

KPMG Assurance and Consulting Services LLP, Lodha Excelus, Apollo Mills Compound, NM Joshi Marg, Mahalaxmi, Mumbai - 400 011 Phone: +91 22 3989 6000.

© 2022 KPMG Assurance and Consulting Services LLP, an Indian Limited Liability Partnership and a member firm of the KPMG global organization of independent member firms affiliated with KPMG International Limited, a private English company limited by guarantee. All rights reserved.

The KPMG name and logo are trademarks used under license by the independent member firms of the KPMG global organization.

This document is meant for e-communication only. (021_BRO1119_RG)