



Cyber Security

An enterprise-wide risk



“

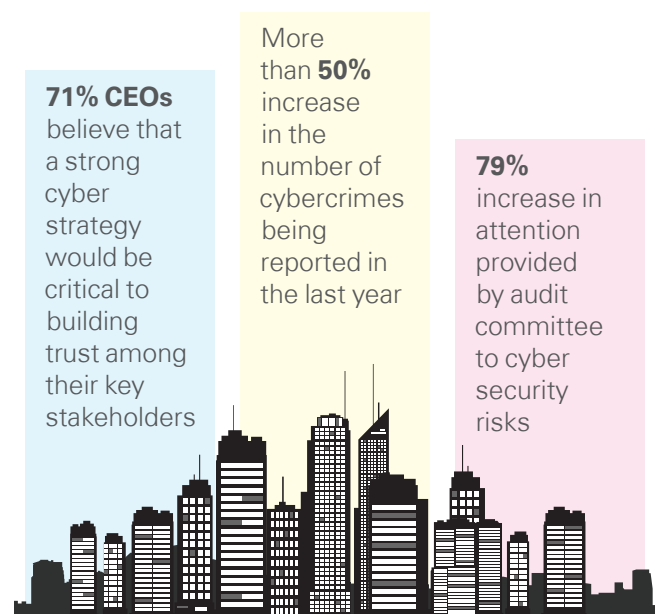
‘KPMG has the clearest, most direct vision’ - Forrester Research Inc. report*

Cyber security has emerged as a key enterprise-wide risk for organisations. The nature of cyber-attacks has been constantly evolving and the corresponding risk results in significant exposure for enterprises in various proportions.

Coupled with the digital transformation journey, this has resulted in cyber risk moving to the front end of the business. As businesses expose themselves to evolving technology and digital ecosystems, they need to ensure that their cyber risk exposure is effectively managed.

Cyberattacks in the current era have become more specialised and concentrated, targeting specific organisations and individuals. The impact due to incidents has resulted in significant damage, spanning from financial losses, disruption of operational services to erosion of shareholder value and trust.

There is a pressing need to understand this threat comprehensively and address it holistically.



Source: Growing pains — India CEO Outlook 2018 and KPMG in India's Cybercrime survey 2017

Our value proposition:

- Cyber services portfolio
- Addressing C-suite boardroom questions
- Our tools and resources
- Cyber - Centre of Excellence
- Access to expertise and professionals across geographies.

Cyber philosophy

KPMG in India is focused on providing holistic services to our clients to help them navigate through the ever-changing cyber risk landscape. Through constant innovation and deep knowledge, we provide our clients with service offerings that help them mitigate cyber risk while enabling them to pursue business opportunities. We are a part of a global network and have access to expertise and professionals across geographies.

*The Forrester Wave™: Information Security Consulting Services, Q1 2017

This is as per an announcement made by KPMG International, 10 October 2017.

The Forrester Wave™ is copyrighted by Forrester Research, Inc. Forrester and Forrester Wave are trademarks of Forrester Research, Inc. The Forrester Wave is a graphical representation of Forrester's call on a market and is plotted using a detailed spreadsheet with exposed scores, weightings, and comments. Forrester does not endorse any vendor, product, or service depicted in the Forrester Wave. Information is based on best available resources. Opinions reflect judgement at the time and are subject to change.

Cyber services portfolio

KPMG in India provides a broad suite of cyber security services, bringing a business context to cyber security for all levels of the organisation, from the boardroom to the back office.

We help organisations transform their security function into business-enabling platforms so they can understand, prioritise, and manage their cyber security risks, take control of uncertainty, increase agility, and convert risk into an advantage.



Strategy and governance

Services focus on aligning the cyber agenda with dynamic business requirements and compliance

- Cyber security framework/ compliance assessment
- Cyber strategy and target operating model
- Cyber Key Performance Indicator, Metrics and dashboarding
- Information and Data Governance
- Data privacy and protection
- Third-party security risk management
- Business resilience.



Cyber transformation

Enable organisations to transform cyber posture by driving cyber programmes

- Identity and Access Management (IAM)
- GRC (Governance, Risk and Compliance) integration and enablement
- Security Operation and Management (Next Gen SOC, Security Analytics)
- Technical integration and enablement – Data leakage, Next generation threat management.



Cyber defense

Provide greater visibility and understanding of changing technical risks

- Technical cyber security assessments (VA/ PT, Application and Mobility Security)
- Security review of components (firewalls, network devices, databases, etc)
- Industry specific operational technology security assessment and testing (Power, Energy, Telecom, Healthcare, payment channels)
- Cyber drills and red/ blue teaming.



Cyber response

Effective and efficient response to cyber incidents

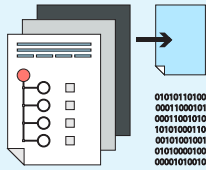
Forensic analysis and detailed investigations

- Incident response readiness and planning (Simulation, Tabletop exercises, Playbooks, Training and Awareness)
- Cyber incident investigations and remediation (Retainership, On-call services)
- Threat intelligence collection
- Data breach remediation.

Digital cyber security – Cloud | Mobile | Internet of things | Intelligent automation | Blockchain high value managed services



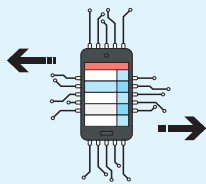
Our tools and resources



Digital insights platform

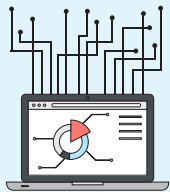
A platform that continuously monitors upcoming threats arising from cyber and digital and provides real time actionable insights

- Web analysis
- Dark web scanning
- Threat intelligence
- Deal advisory due diligence
- Third party risk management
- Brand infringement
- Digital reputation
- Social imposters.



Cyber KARE

- Mobile-based application
- Enables an enterprise to perform a self-assessment of its cyber security in a repeatable and measurable manner
- Designed to help senior management and CXOs to gain a quantitative view of their organisation's potential exposure to cyber threats and associated risks in an executive dashboard covering security and privacy.

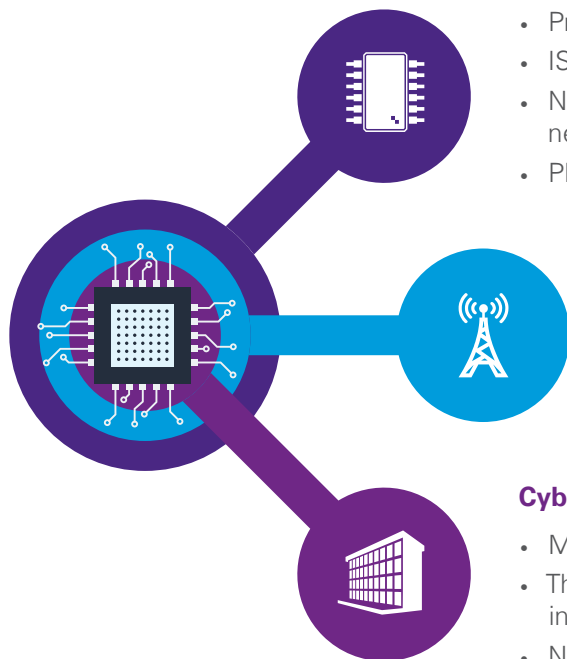


Third party risk management (TPRM)

- KPMG in India has developed a specific solution called TPRM to assess vendor risk
- Our value proposition:
 - 250+ assessments / year
 - Key geographical regulatory requirements
 - Hub and spoke model
 - Seasoned resources with service industry experience.



Cyber - Centre of excellence



Cyber lab

- Progressive security-testing lab across two locations
- ISO 27001 certified facility
- Network, bandwidth physically segregated from corporate network
- Physical access control restrictions.

Cyber enablement centre

- State of the art 24/7 centres with live cyber feeds
- Monitoring global cyber threats on a continuous basis
- Cloud-based technologies for managing security
- Physical access control restrictions.

Cyber forensics

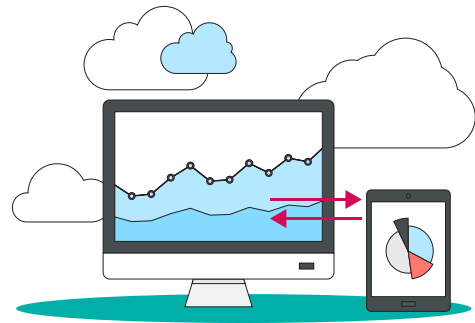
- Modern cyber forensic labs across two locations
- The laboratories are fully equipped with advanced forensics investigation tools and resources
- Network, bandwidth physically segregated from the corporate network
- Physical access control restrictions.



C suite - boardroom questions

We position cyber security as a priority on board room agendas and help ensure that the right perspectives are established across stakeholders.

We help answer the right questions for key executives to ensure that cyber security risks are completely understood and the right strategy is put in place.



- What is the state of my current cyber programme at a holistic level?
- How can I be sure that we have a comprehensive security strategy?
- Is our cyber programme struggling to demonstrate the value it provides?

Chief Executive Officer (CEO)



- Is my organisation evaluating the use of new cyber security solutions?
- Do I feel that our team is struggling to unlock the value from existing cyber investments in tools and technology?

Chief Information Officer (CIO)



- Is it more difficult to locate information because of disorganisation?

- As an organisation are we effectively utilising resources for organisational security?
- How do I get the comfort of having all my financial data secure and not compromised in terms of integrity?

Chief Financial Officer (CFO)



Chief Risk Officer (CRO)



- How comfortable am I with our third party risk management programme?
- How do I assess and manage all the regulatory risks and compliance levels?
- Am I aware of the digital technologies in the new age and its risks?



KPMG in India contacts

Akhilesh Tuteja

Partner and Head

Risk Consulting

Global Co-lead - Cyber Security

T: +91 98710 25500

E: atuteja@kpmg.com

Atul Gupta

Partner and Head

IT Advisory

Cyber Security Leader

T: +91 98100 81050

E: atulgupta@kpmg.com

Nitin Shah

Partner

Cyber Security - IT Advisory

T: +91 9560244888

E: nitinshah@kpmg.com

Amrit Sethi

Executive Director

Cyber Security - IT Advisory

T: +91 9818316910

E: amritsethi@kpmg.com

Kunal Pande

Partner

Cyber Security - IT Advisory

T: +91 9892600676

E: kpande@kpmg.com

Chandra Prakash

Partner

Cyber Security - IT Advisory

T: +91 9900020190

E: chandraprakash@kpmg.com

Srinivas Pothraju

Partner

Cyber Security - IT Advisory

T: +91 9845919740

E: srinivasbp@kpmg.com

Sony Anthony

Partner

Cyber Security - IT Advisory

T: +91 9845565222

E: santhony@kpmg.com

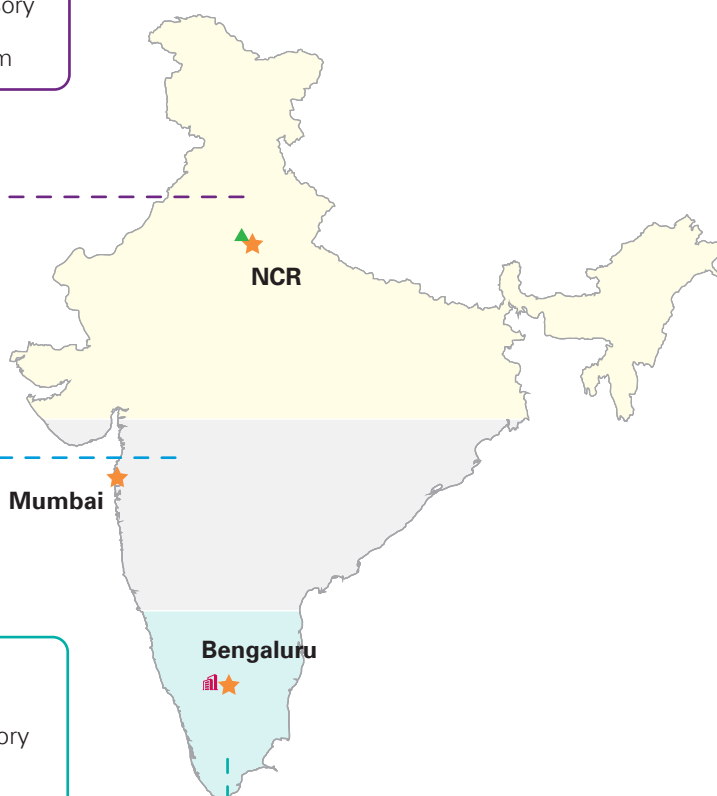
Merril Cherian

Partner

Cyber Security - IT Advisory

T: +91 9900525082

E: mcherian@kpmg.com



★ Cyber security lab

▲ KPMG Cyber
enablement center

ISO 27001 certified
cyber security lab

home.kpmg/in

#KPMGjosh

Follow us on:

home.kpmg/in/social-media



The information contained herein is of a general nature and is not intended to address the circumstances of any particular individual or entity. Although we endeavour to provide accurate and timely information, there can be no guarantee that such information is accurate as of the date it is received or that it will continue to be accurate in the future. No one should act on such information without appropriate professional advice after a thorough examination of the particular situation.

© 2020 KPMG, an Indian Registered Partnership and a member firm of the KPMG network of independent member firms affiliated with KPMG International Cooperative ("KPMG International"), a Swiss entity. All rights reserved.

The KPMG name and logo are registered trademarks or trademarks of KPMG International.

This document is for e-communication only. (025_FLY1218)