



# KPMG e-TDS & TCS Compliance Solution

Technology enabled tax managed services

2022

---

[home.kpmg/in](https://home.kpmg/in)

# KPMG e-TDS & TCS Compliance Solution - Technology enabled managed services

## Technology enabled managed services comprising:

- Blend of automation solutions and experienced tax professionals for seamless delivery of services
- End-to-end solution with complete compliance responsibility
- Process optimisation and TDS and TCS risks mitigation for clients
- Saves client tax team's time to focus on core business activities

## What it entails

Determination of appropriate **TDS/TCS rates** on domestic and foreign payments to mitigate future adjustments

Control over **Lower Deduction certificates** ("LDC") received from multiple vendors

Creation of year-end **provisions** and its subsequent utilization

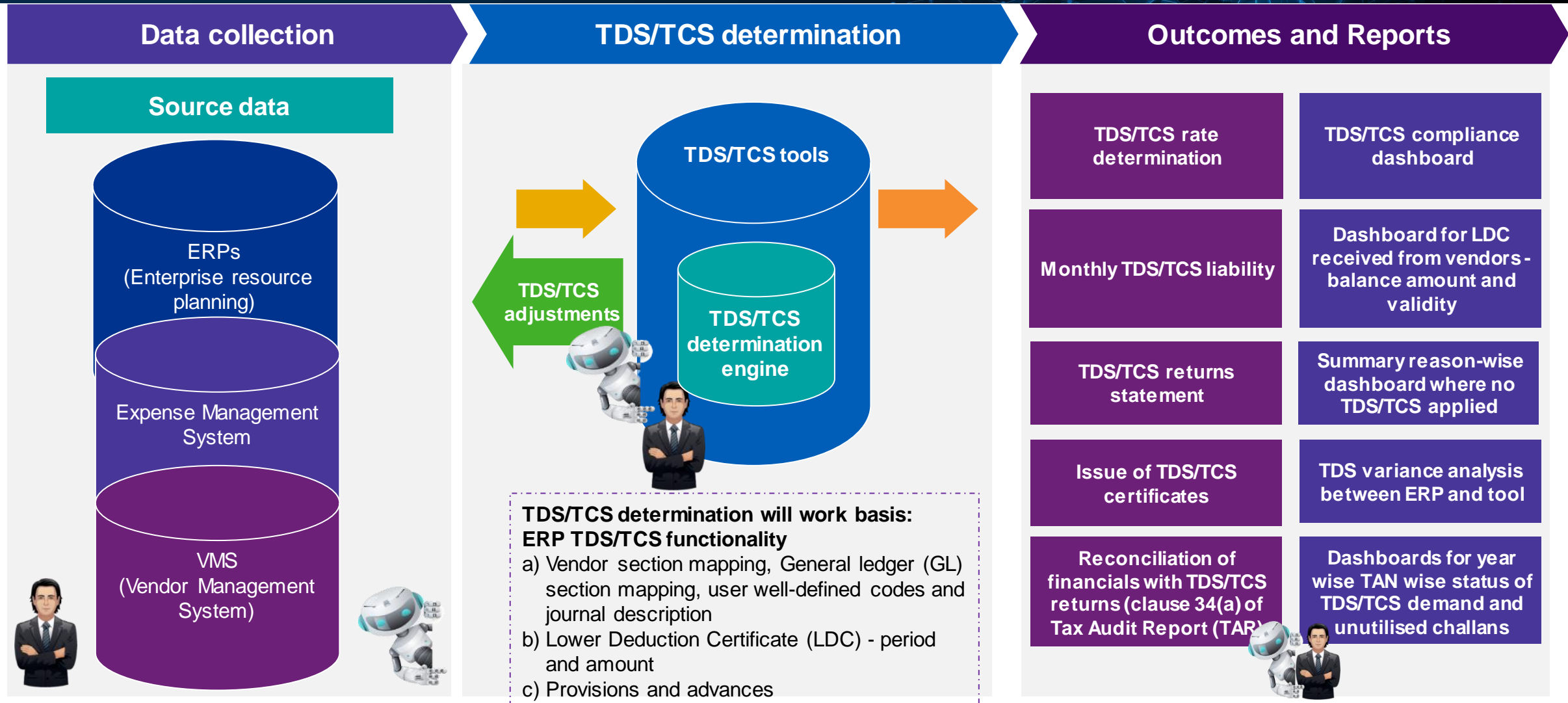
Extraction of required data from ERP and filing correct and complete **TDS/TCS return** to avoid further revision and notices

**Proactive reconciliation summaries** of Financials with TDS/TCS returns and other sources for possible future enquiries

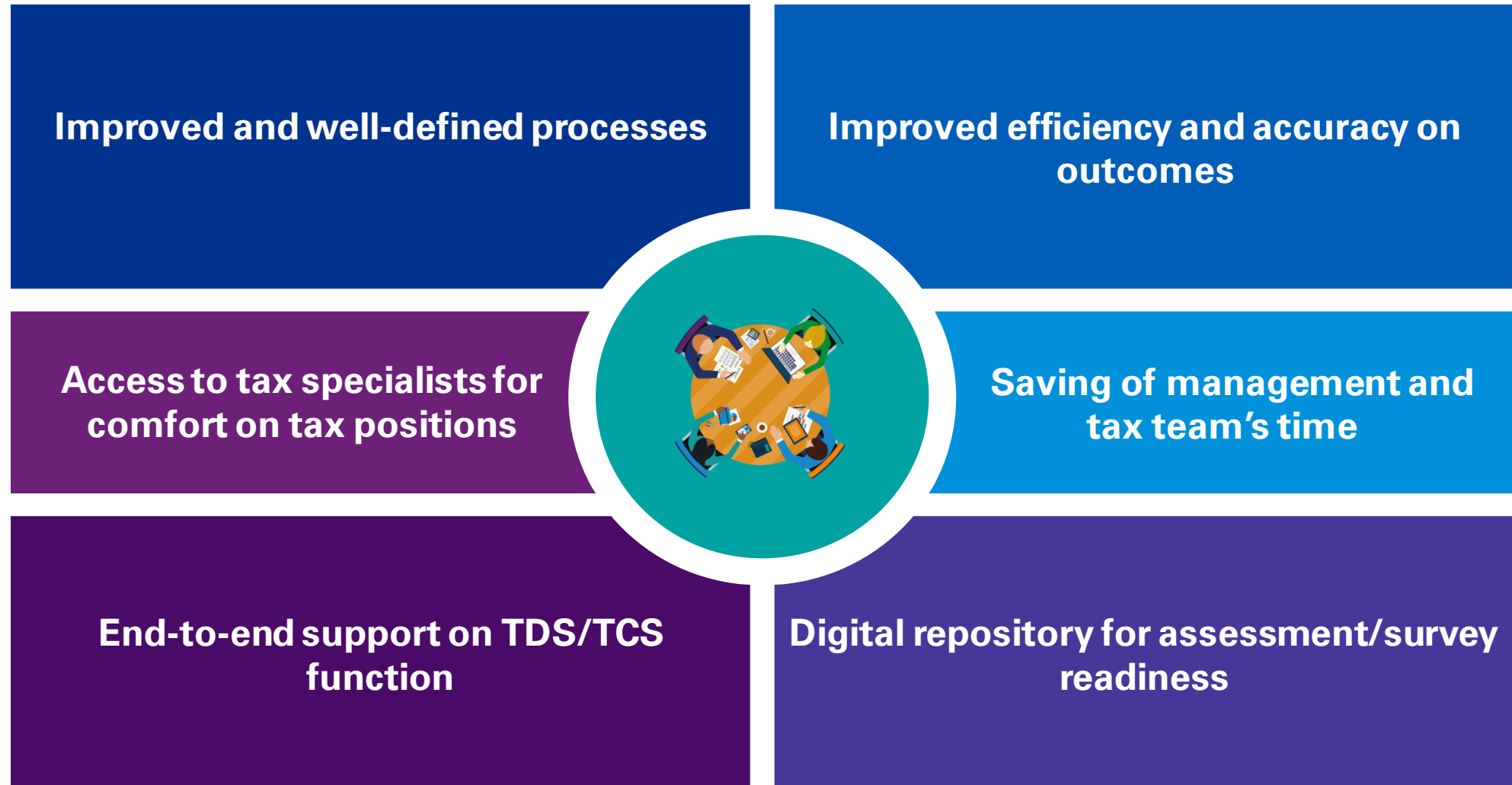
Automated workflows, digital repository and analytical dashboards for better **control and governance** for clients

A comprehensive technology enabled 'Outsourced Compliance Tax Service' to optimise resources and reduce operational issues

# KPMG e-TDS & TCS Compliance Solution - End-to-end process (illustrative)



# KPMG e-TDS & TCS Compliance Solution - What will it achieve?





**#KPMG josh**



**[home.kpmg/in/socialmedia](https://home.kpmg/in/socialmedia)**

The information contained herein is of a general nature and is not intended to address the circumstances of any particular individual or entity. Although we endeavour to provide accurate and timely information, there can be no guarantee that such information is accurate as of the date it is received or that it will continue to be accurate in the future. No one should act on such information without appropriate professional advice after a thorough examination of the particular situation.

KPMG Assurance and Consulting Services LLP, Lodha Excelus, Apollo Mills Compound, NM Joshi Marg, Mahalaxmi, Mumbai - 400 011 Phone: +91 22 3989 6000, Fax: +91 22 3983 6000.

© 2022 KPMG Assurance and Consulting Services LLP, an Indian Limited Liability Partnership and a member firm of the KPMG global organization of independent member firms affiliated with KPMG International Limited, a private English company limited by guarantee. All rights reserved.

The KPMG name and logo are trademarks used under license by the independent member firms of the KPMG global organization.

This document is for e-communication only.