



Transparency Report 2020

**for the Year Ended
30 September 2020**

KPMG Baltics, UAB

kpmg.com/lt



KPMG Values

Our Values represent what we believe in, and what's important to us as an organization. They guide our behaviors day-to-day, informing how we act, the decisions we make, and how we work with each other, our clients, companies that we audit, and all our stakeholders.

Our Values are:

- **Integrity:** We do what is right.
- **Excellence:** We never stop learning and improving.
- **Courage:** We think and act boldly.
- **Together:** We respect each other and draw strength from our differences.
- **For Better:** We do what matters.

KPMG's Values express the organization's long-standing core beliefs, and in 2020 the language was updated to make them bolder, simpler and more memorable to help each of us bring them to life every day.



Message from National Senior Partner

KPMG in Lithuania, through its offices in Vilnius and Klaipėda, provides a wide range of audit, tax and advisory services to private individuals, public and private companies and government organizations. The quality of our work and integrity of our people are paramount to everything we do.

KPMG provides its services in Lithuania through KPMG Baltics, UAB a registered audit firm. Reliable financial information is essential for capital markets and the auditor's role in ensuring the probity of such information is vital. It is for this reason that we believe that audit firms, entrusted with this responsibility, should be open about the quality and integrity measures that they adopt.

We are therefore pleased to present this Transparency Report for KPMG Baltics, UAB for the year ended 30 September 2020. We have included information about who we are, how we are organized, the structure of our audit quality framework and the procedures we have in place to enhance integrity and meet the quality standards expected of us.

Vilnius, 29 January 2021



Rokas Kasperavičius
National Senior Partner,
rkasperavicius@kpmg.com

This report complies with the requirements under Article 13 of the EU Audit Regulation and the Law on Audit of Financial Statements of the Republic of Lithuania.

Throughout this document, "KPMG" refers to the global organization or to one or more of the member firms of KPMG International Limited, each of which is a separate legal entity. KPMG International Limited is a private English company limited by guarantee and does not provide services to clients. No member firm has any authority to obligate or bind KPMG International Limited or any other member firm vis-à-vis third parties, nor does KPMG International Limited have any such authority to obligate or bind any member firm. Throughout this document, references to "Firm", "KPMG firm", "member firm" and "KPMG member firm" refer to firms which are either: members of KPMG International Limited; sublicensee firms of KPMG International Limited; or entities that are wholly or dominantly owned and controlled by an entity that is a member or a sublicensee. The overall governance structure of KPMG International and its associated entities is provided in the 'Governance and leadership' section of the 2020 KPMG International Transparency Report.



Audit quality is fundamental to maintaining public trust and is the key measure on which our professional reputation stands.

We define “audit quality” as the outcome when audits are executed consistently, in line with the requirements and intent of applicable professional standards, within a strong system of quality controls.

All of our related activities are undertaken in an environment of the utmost level of objectivity, independence, ethics and integrity.



Contents

1	KPMG Values	2
	Message from the local Senior Partner	3
	Audit quality definition	4
2	Who we are	6
	Our business	6
	Our strategy	6
3	Our structure and governance	7
	Legal structure	7
	Name, ownership and legal relationships	7
	Responsibilities and obligations of member firms	7
	Governance structure	8
4	System of quality control	9
	Tone at the top	9
	Leadership responsibilities for quality and risk management	10
	Association with the right clients	11
	Clear standards and robust audit tools	12
	Recruitment, development and assignment of appropriately qualified people	18
	Commitment to technical excellence and quality service delivery	20
	Performance of effective and efficient audits	21
	Commitment to continuous improvement	23
5	Financial information	25
6	Partner remuneration	26
7	Network arrangements	27
	Legal structure	27
	Responsibilities and obligations of member firms	28
	Professional indemnity insurance	28
	Governance structure	28
	Area quality, risk management leaders	29
8	Statement by the Board of KPMG Baltics, UAB on the effectiveness of quality controls and independence	30
A	Appendices	31
	Details of those charged with governance at KPMG [local entity name]	31
	Public interest entities	32
	Key legal entities and areas of operation	33



Who we are

Our business



KPMG Baltics, UAB is a professional services firm that delivers Audit, Tax and Advisory services. We operate out of 2 offices across Lithuania and had an average of 157 partners and employees in the year to 30 September 2020 (2019: 143).

Full details of the services offered by KPMG Baltics, UAB can be found on our website kpmg.com/LT.

Our strategy



KPMG strategy is set by KPMG International and then implemented in all KPMG network. In Lithuania, the KPMG strategy is implemented by KPMG Baltics, UAB where the supervision is implemented by the Board of KPMG Baltics, UAB. The strategy demonstrates firm commitment to quality and trust. Our focus is to invest significantly in priorities that form part of a multi-year collective strategy implementation that is taking place across our entire global organization.



Our structure and governance

Legal structure



Legal structure and ownership for the financial year ending 30 September 2020

KPMG Baltics, UAB is affiliated with KPMG International Cooperative ("KPMG International"). KPMG International is a Swiss cooperative which is a legal entity formed under Swiss law. Prior to 1 October 2020 it was the coordinating entity for the network and the entity with which all the member firms of the KPMG organization were required to be affiliated with. Further details about KPMG International and its business activities, including our relationship with it for the financial year ending 30 September 2020, are available in the 'Governance and leadership' section of the 2019 KPMGI Transparency Report.

Legal structure and ownership from 1 October 2020

On 1 October 2020, KPMG Baltics, UAB, and all other KPMG firms entered into new membership and associated documents, the key impact of which is that all KPMG member firms in the KPMG global organization became members in, or have other legal connections to, KPMG International Limited, an English private company limited by guarantee. KPMG International Limited acts as the coordinating entity for the overall benefit of the KPMG member firms. It does not provide professional services to clients. Professional services to clients are exclusively provided by member firms.

Further detail on the revised legal and governance arrangements for the KPMG global organization from 1 October 2020 can be found in section 'Governance and leadership' of the [2020 KPMG International Transparency Report](#).

KPMG International Limited and the KPMG member firms are not a global partnership, single firm, multinational corporation, joint venture, or in a principal or agent relationship or partnership with each other. No member firm has any authority to obligate or bind KPMG International Limited, any of its related entities or any other member firm vis-à-vis third parties, nor does KPMG International or any of its related entities have any such authority to obligate or bind any member firm. KPMG Baltics, UAB, is part of the KPMG global organization of professional services

firms providing Audit, Tax, and Advisory services to a wide variety of public and private sector organizations. The KPMG organization structure is designed to support consistency of service quality and adherence to agreed Values wherever its member firms operate.

KPMG Baltics, UAB is a Lithuanian Limited Liability Company, with its registered head office in Vilnius and a branch in Klaipėda. Up until 1 October 2020, its 100% shares were held by KPMG KÜB, LT, where the general partner rights were exercised by KPMG CEE Holdings Limited (Cyprus). As of 1 October 2020, the shares of KPMG Baltics, UAB were purchased by Swedish entity KPMG AB. From 1 October 2020, KPMG KÜB, LT is a dormant entity. KPMG Baltics, UAB is governed by Lithuanian legislation.

Name, ownership and legal relationships



KPMG is the registered trademark of KPMG International and is the name by which the member firms are commonly known. The rights of member firms to use the KPMG name and marks are contained within agreements with KPMG International.

Member firms throughout the world are generally locally owned and managed. Each member firm is responsible for its own obligations and liabilities. KPMG International and other member firms are not responsible for a member firm's obligations or liabilities.

Member firms may consist of more than one separate legal entity. If this is the case, each separate legal entity will be responsible only for its own obligations and liabilities, unless it has expressly agreed otherwise.

Responsibilities and obligations of member firms



As a sub-licensee, KPMG Baltics, UAB is required to comply with the policies, procedures and regulations of KPMG International, including quality standards governing how we operate and provide services to clients to compete effectively. This includes having a firm structure that ensures continuity and stability and being able to adopt global and regional strategies, share resources (incoming and outgoing), service multinational clients, manage risk, and deploy global methodologies and tools.



KPMG Baltics, UAB takes responsibility for its management and the quality of its work.

KPMG Baltics, UAB commits itself to a common set of KPMG Values (see page 2).

KPMG International's activities are funded by a annual payment paid to it by member firms. The basis for calculating such amounts is approved by the Global Board and consistently applied to the member firms. A firm's status as a KPMG member firm and its participation in the KPMG organization may be terminated if, among other things, it has not complied with the policies, procedures and regulations set by KPMG International or any of its other obligations owed to KPMG International.

Governance structure



The principal governance and oversight body of KPMG Baltics, UAB is the Board, which provides leadership to the organization and is responsible for the long-term growth and sustainability setting our strategy and overseeing its implementation, monitoring performance against our business plan and protecting and enhancing the KPMG brand.

As at 30 September 2020, the Board consisted of 3 Board members chaired by Rokas Kasperavičius, KPMG Baltics, UAB, National Senior Partner.

A schedule of matters to be monitored regularly by the Board includes matters of fundamental importance to the company such as its commitment to quality, operating and financial performance, annual business plans and budgets, new business proposals (considered individually), marketing, technology development, recruitment and retention, remuneration and risk management policies.

Appointments to the Board are made by the Shareholder after consultation with the Chairman of the company. The members of the Board of KPMG Baltics, UAB as at and for the year ended 30 September 2020 were:

- Rokas Kasperavičius, Chairman
- Domantas Dabulis
- Birutė Petrauskaitė.



System of quality control

Overview



Tone at the top, leadership and clear set of Values and conduct are essential to set the framework for quality. However, these are required to be backed up by a system of quality control that ensures our performance meets the highest professional standards.

To help all audit professionals concentrate on the fundamental skills and behaviors required to deliver a quality audit, KPMG has developed the Audit Quality Framework, based on International Standards on Quality Control (ISQC 1), issued by the International Auditing and Assurance Standards Board (IAASB) and on the Code of Ethics for Professional Accountants issued by the International Ethics Standards Board for Accountants (IESBA), which apply to professional services firms that perform audits of financial statements.

KPMG International has quality control policies that apply to all member firms. These are included in KPMG's Global Quality & Risk Management Manual (GQRMM) which applies to all KPMG personnel. KPMG Baltics, UAB is required to establish and maintain a system of quality control and design, implement, and test the operating effectiveness of quality controls.

KPMG Baltics, UAB is required to implement KPMG International policies and procedures and also adopts additional policies and procedures that are designed to address the rules and standards issued by the Lithuanian Chamber of Auditors, the Authority of Audit, Accounting, Property Valuation and Insolvency Management and other relevant regulators as well as applicable legal and regulatory requirements.

Quality control and risk management are the responsibility of all KPMG Baltics, UAB partners and employees. This responsibility includes the need to understand and adhere to member firm policies and associated procedures in carrying out their day-to-day activities. The system of quality control applies to all KPMG partners and employees wherever they are based.

We are implementing our program to adopt the new international standard on quality management (ISQM 1), which was [approved by the IAASB](#) in September 2020 and is expected to be effective from December 2022. ISQM 1 requires each KPMG firms to design, implement and operate a system of quality management to consistently deliver quality audits, and to evaluate the effectiveness of the system on an annual basis.

While this Transparency Report summarizes KPMG's approach to audit quality, it may also be useful for stakeholders interested in member firms' Tax and Advisory services, as many KPMG quality control procedures and processes are cross-functional and apply equally to all services offered.

Audit quality framework



At KPMG in Lithuania audit quality is not just about reaching the right opinion, but how we reach that opinion. It is about the processes, thought and integrity behind the auditors' report. The outcome of a quality audit is the delivery of an appropriate and independent opinion in compliance with relevant professional standards and applicable legal and regulatory requirements. To help all audit professionals concentrate on the fundamental skills and behaviors required to deliver quality audit, KPMG International has developed the Audit Quality Framework.

KPMG's audit quality framework introduces a common language that is used by all KPMG firms to describe what drives audit quality and to help highlight to their audit professionals how they contribute to its delivery.

Tone at the top sits at the core of the Audit Quality Framework's seven drivers of audit quality and helps ensure that the right behaviors permeate all KPMG firms. All of the other drivers create a virtuous circle, because each driver is intended to reinforce the others.

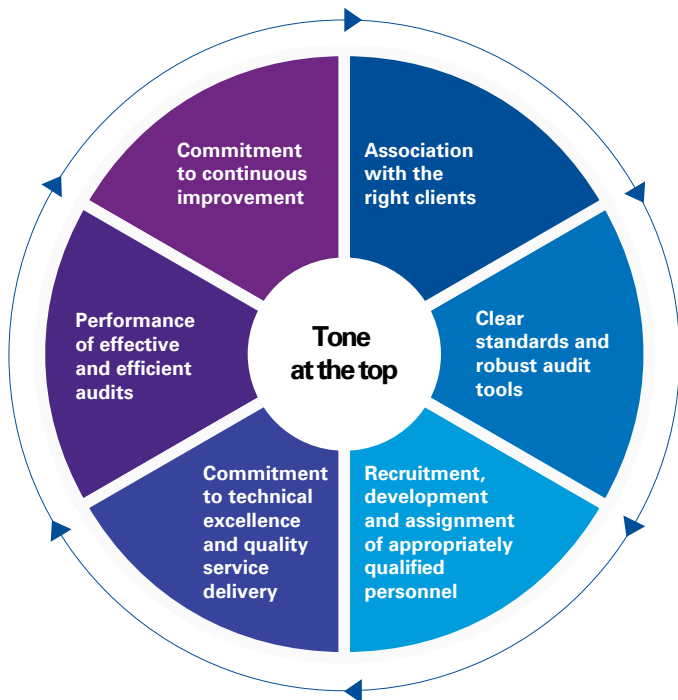
Tone at the top



KPMG global leadership, working with regional and member firm leadership, plays a critical role in establishing our commitment to quality and the highest standards of professional excellence. A culture based on quality, integrity and ethics is essential in an organization that carries out audits and other services on which stakeholders rely.

At KPMG Baltics, UAB we promote a culture in which consultation is encouraged and recognized as a strength.

Tone at the top means that KPMG Baltics, UAB leadership demonstrates commitment to quality, ethics and integrity and communicates its commitment to clients, stakeholders, and society at large to earn public trust.



The KPMG Values are set out on page 2.

Outlined in [KPMG’s Global Code of Conduct](#) are the responsibilities all KPMG personnel have to each other, our clients, and the public. It shows how our Values inspire our greatest aspirations and guide all of our behaviours and actions. It defines what it means to work at and be part of KPMG, as well as our individual and collective responsibilities.

Our Values lie at the heart of the way we do things. To do the right thing, the right way. Always. They drive our daily behaviours, guide our decisions, and shape our admissions. They form the foundation of a resilient culture ready to meet challenge with integrity, so we never lose sight of our principal responsibility to protect the public interest. And they propel us forward — through our work and the example we set — as we inspire confidence and empower change throughout the world.

Everyone at KPMG is required to comply with the Global Code of Conduct and to confirm their compliance with the Code. Everyone at KPMG is also required to take regular training covering the Code. We are committed to holding ourselves accountable for behaving in a way that is consistent with the Code. Individuals are encouraged to speak up if they see something that makes them uncomfortable or that is inconsistent with our Values.

Moreover, everyone at KPMG is responsible for reporting — and is required to report — any activity that could potentially be illegal or in violation of our Values, KPMG policies, applicable laws, regulations or professional standards.

To safeguard this, each KPMG firm is required to have procedures and established channels of communication so that anyone working there can report suspected ethical and quality issues or concerns.

In addition the [KPMG International hotline](#) is a mechanism for KPMG personnel, clients and other third parties to confidentially report concerns they have relating to certain areas of activity by any KPMG International entity, activities of KPMG firms or KPMG personnel.

All KPMG firms and personnel are prohibited from retaliating against individuals who have the courage to speak up in good faith. Retaliation is a serious violation of the Code, and any person who takes retaliatory action will be subject to their firm’s disciplinary policy.

At KPMG Baltics, UAB, we regularly monitor the extent to which our people feel that the firm lives the KPMG Values through the Global People Survey (refer to section *Insights from our people – Global People Survey (GPS)*).

Leadership responsibilities for quality and risk management



KPMG Baltics, UAB demonstrates commitment to quality, ethics and integrity, and communicates our focus on quality to clients, stakeholders, and society. Our leadership plays a critical role in setting the right tone and leading by example - demonstrating an unwavering commitment to the highest standards of professional excellence and championing and supporting major initiatives.

Our leadership team is committed to building a culture based on quality, integrity and ethics, demonstrated through their actions - written and video communications, presentations to teams and one-to-one discussions.

In accordance with the principles in ISQC1, our National Senior Partner, Rokas Kasperavičius, has assumed ultimate responsibility for KPMG Baltics, UAB system of quality control. He is responsible for firm-wide risk management, all professional practice matters, regulatory relationships, approval of all new service offerings and development of all methodologies and tools.

The Risk Management Partner (RMP), is responsible for setting overall professional risk management and quality control policies and monitoring compliance for KPMG Baltics, UAB. The RMP has a seat on the Board and has a direct reporting line to the Senior Partner. The RMP consults with the appointed Area Quality and Risk Management Leaders.

The fact that the role is a Board position, and seniority of the reporting lines, underlines the importance that the firm places on risk and quality issues. The RMP is supported by a team of partners and professionals in each of the functions.



The Ethics and Independence Partner has primary responsibility for the direction and execution of ethics and independence policies and procedures in KPMG Baltics, UAB and reports on ethics and independence issues to the Senior Partner.

Each of the functions, Audit, Tax and Advisory has a partner who has been given operational responsibility for the performance of that function, reporting to the National Senior Partner. They are responsible for the execution of the risk management, quality assurance and monitoring procedures for their specific functions within the framework set by the Risk Management Partner. These procedures all make it clear though that at engagement level risk management and quality control is ultimately the responsibility of all professionals in the firm.

KPMG Baltics, UAB Head of Audit is responsible for leading a sustainable high-quality Audit practice This includes:

- setting the right 'tone at the top' by demonstrating an unwavering commitment to the highest standards of professional excellence, including skepticism, objectivity, and independence;
- developing and implementing strategies to monitor and maintain knowledge and skills required of partners and employees to fulfil their professional responsibilities; and
- monitoring and addressing audit quality and risk matters as they relate to the audit practice, including an annual evaluation of activities considered to be key to audit quality.

Audit Leadership Team

The Audit Leadership Team of KPMG Baltics, UAB meets on a weekly basis. During the year, these meetings included regular discussions about current and emerging audit quality issues arising from external and internal quality review processes, queries being raised by engagement teams, root cause analysis procedures and other quality matters identified from a variety of sources. These were debated, other observations collected from client-facing teams were considered and actions agreed. Typically, most of these actions are short term, in which case they are developed and communicated through the regular technical briefings issued to the whole Audit function of KPMG Baltics, UAB and also, if considered of sufficient magnitude, included in the next mandatory training.

For more complex issues, the Department of Professional Practice (DPP) is addressed. If further escalation is needed (which might require amendments to KPMG's Global Audit methodology or audit tools), these will be raised with the KPMG International Global Audit groups for consideration and potential development of solutions by the KPMG Global Solutions Group (KGSG) and the International Standards

Group (ISG). For more information about the KGSG and the ISG refer to section *Culture of consultation*.

Investing in continuous improvement

KPMG continues to invest significantly in audit quality across the global organization. We are building on our sound audit quality foundations, both in terms of how we manage our firms and how we execute audit engagements.

This means ongoing investment in our system of quality management, global monitoring of audit quality, enhanced support, and providing best-in class technology and tools for engagement teams.

Our global audit quality program supports consistent deployment of investments to enhance and drive a common approach.

Association with the right clients

Acceptance and continuance of clients and engagements



Rigorous global client and engagement acceptance and continuance policies are vital to being able to provide high-quality professional services.

KPMG's client and engagement acceptance and continuance policies, and processes are designed to identify and evaluate any potential risks prior to accepting or continuing a client relationship or performing a specific engagement.

KPMG firms are required to evaluate whether to accept or continue a client relationship or perform a specific engagement. Where client/engagement acceptance (or continuance) decisions pose significant risks, additional approvals are required.

Client and engagement acceptance process

Client evaluation

KPMG Baltics, UAB undertakes an evaluation of every prospective client. This involves obtaining sufficient information about the prospective client, its key management and significant beneficial owners and then properly analyzing the information to be able to make an informed acceptance decision. This evaluation includes completion of a questionnaire to assess the client's risk profile and obtaining background information on the client, its key management, directors and owners. In addition, we obtain additional information required to satisfy our local legal and/or regulatory requirements.

Engagement evaluation

Each prospective engagement is also evaluated to identify potential risks in relation to the engagement.



A range of factors is considered as part of this evaluation including potential independence and conflict of interest issues (using Sentinel™ KPMG's conflicts and independence checking system), intended purpose and use of engagement deliverables, public perception, as well as a range of factors specific to the type of engagement. For audit services, these include the competence of the client's financial management team and the skills and experience of partners and employees assigned to staff the engagement. The evaluation is made in consultation with other senior member firm partners and includes review by quality and risk management leadership as required.

Where audit services are to be provided for the first time, the prospective engagement team is required to perform additional procedures, including a review of any non-audit services provided to the client and of other relevant business, financial and personal relationships.

Similar independence evaluations are performed when an existing audit client becomes a public interest entity or additional independence restrictions apply following a change in the circumstances of the client.

Depending on the overall risk assessment of the prospective client and engagement, additional safeguards may be introduced to help mitigate the identified risks. Any potential independence or conflict of interest issues are required to be documented and resolved prior to acceptance.

A prospective client or engagement will be declined if a potential independence or conflict issue cannot be resolved satisfactorily in accordance with professional standards and our policies, or if there are other risk issues that cannot be appropriately mitigated.

Continuance process

KPMG Baltics, UAB undertakes an annual re-evaluation of all its audit clients. The re-evaluation

identifies any issues in relation to continuing association and any mitigating procedures that need to be put in place (this may include the assignment of additional professionals such as an Engagement Quality Control (EQC) reviewer or the need to involve additional specialists on the audit).

Recurring or long running non-audit engagements are also subject to re-evaluation.

In addition, clients and engagements are required to be re-evaluated if there is an indication that there may be a change in their risk profile, and as part of the continuous independence evaluation process, engagement teams are required to identify if there have been any changes to previously identified threats or if there are new threats to independence. The threats are then evaluated and, if not at an acceptable level, are eliminated or appropriate safeguards are applied to reduce the threats to an acceptable level.

Withdrawal process

Where KPMG Baltics, UAB comes to a preliminary conclusion that indicates that we should withdraw from an engagement or client relationship, we consult internally and identify any required legal, professional and regulatory responsibilities. We also communicate as required with those charged with governance and any other appropriate authority.

Client portfolio management

KPMG Baltics, UAB leadership appoints engagement partners and audit directors who have the appropriate competence, capabilities, time and authority to perform the role for each engagement.

We review each audit partner's client portfolio in individual discussions with the audit partner. The reviews consider the industry, nature and risk of the client portfolio as a whole along with the competence, capabilities and capacity of the partner to deliver a quality audit for every client.

Clear standards and robust audit tools



All KPMG Baltics, UAB professionals are expected to adhere to KPMG International and KPMG Baltics, UAB policies and procedures including independence policies, and are provided with a range of tools and guidance to support them in meeting these expectations. The KPMG Baltics, UAB policies and procedures set for audit engagements incorporate the relevant requirements of accounting, auditing, ethical and quality control standards, and other relevant laws and regulations.

Our approach to audit

The KPMG organization has been investing significantly in evolving its audit capabilities and will continue to do so in the coming years including a new global electronic audit workflow delivered through KPMG Clara platform – KPMG's smart, modular audit platform – capable of continually integrating new and emerging technologies, with advanced capabilities embedded that leverage data, science, audit automation, data visualization and more. Digital audit is integral to the way how KPMG member firms obtain audit evidence and interact with clients in the digital era.

KPMG's high-quality audit process will continue to include:

- timely partner and manager involvement throughout the engagement
- access to the right knowledge including involvement of specialists, training and experience requirements and relevant industry expertise
- critical assessment of all audit evidence obtained during the audit, exercising appropriate professional judgment



- ongoing mentoring, supervision and review of the engagement team managing and documenting the audit.

KPMG's commitment to audit quality during the COVID-19 pandemic

The COVID-19 pandemic has forced us all to think differently, we continue to respond to and embrace this challenge. Most organizations are likely to be impacted by the COVID-19 pandemic, either directly or indirectly, and the increased economic uncertainty and risk may have significant financial reporting implications. Issues including going concern, asset impairments and valuations will require careful judgment as organizations deal with a high degree of uncertainty and market volatility. KPMG firms' role as auditors is to evaluate these judgements.

Since the start of the pandemic we have maintained an online COVID-19 | Financial reporting resource center to assist companies and other stakeholders understand potential accounting and disclosure implications.

KPMG International has issued extensive guidance to assist teams in addressing the various accounting, financial reporting and audit related matters arising from the impacts of the COVID-19 pandemic including going concern, asset impairments, valuations and related disclosures, materiality, risk assessment, group audits, inventory, subsequent events, audit evidence communications with Those Charged With Governance, and considerations for remote working environments.

KPMG's guidance has been continually updated throughout the pandemic as other significant auditing, accounting and reporting issues have been identified.

KPMG is a technology-enabled organization, with all audit technical accounting and auditing resources, guidance and audit platforms and tools available electronically, enabling the conversion to a remote working environment.

Communication has been increasingly important to everyone during the COVID-19 pandemic. We have leveraged our investments in technology to provide KPMG firms with more regular updates, including virtual meetings to share best practices and guidance

Consistent audit methodology and tools

Bringing consistency through our methodology.

Our audit methodology, tools and guidance are:

- globally consistent and fully compliant with the applicable standards, including International Standard on Auditing (ISA), Public Company Accounting Oversight Board (PCAOB) and the American Institute of CPAs (AICPA) and are supplemented to comply with local auditing standards and regulatory or statutory requirements by member firms;

- inclusive of KPMG methodology interpretations that drive consistency in areas where the applicable standards are not prescriptive in the approach to be followed;
- centered on identifying risk, focusing on risks of material misstatements and the necessary audit response;
- made available to all KPMG audit professionals and required to be used, where necessary;
- applied even where local auditing standards are less demanding than the ISAs.

The KPMG audit methodology is set out in KPMG's Audit Manual (currently used with eAudit) and the KPMG Audit (Execution Guide (for use with the KPMG Clara workflow) and includes additional requirements that go beyond the ISAs, which we believe enhance audit quality. The methodology emphasizes applying appropriate professional skepticism in the execution of audit procedures and requires compliance with relevant ethical requirements, including independence.

Enhancements to the audit methodology, guidance and tools are made regularly to maintain compliance with standards, and address emerging auditing areas of focus and audit quality results (internal and external). For example, as a result of the current COVID-19 pandemic, many companies are experiencing significant financial pressures and many of our auditors are now working remotely. We have issued guidance to our auditors conducting audit procedures in a remote-working environment, raising awareness of key audit risks such as going concern and impairments and provided reminders of the importance of exercising professional skepticism taking appropriate actions if information is identified that is unexpected or unusual and may be indicative of potential management bias, a fraud risk or fraud.

KPMG firms may add local requirements and/or guidance in the Audit manual to comply with additional professional, legal or regulatory requirements.

Delivering through our current audit workflow

The current KPMG audit is enabled through eAudit, an activity-based workflow and electronic audit file. eAudit is KPMG's audit documentation workflow that allows professionals to complete quality and consistent audits. eAudit integrates KPMG's audit methodology, guidance and industry specific, and the tools needed to execute and document the audit work performed.

eAudit can be "scaled" to present the relevant requirements and guidance, depending on the nature of the entity to be audited and in accordance with professional standards and applicable legal and regulatory requirements. It provides direct access to KPMG's audit guidance, professional standards and documentation templates.



Investing for the future

While our current audit workflow and methodology are robust and, consistent with all auditing standards' requirements, the changes we are making will enable us to continually drive audit quality and consistency upwards and provide us with the platform to build in continuous enhancements as the power of new technologies develops.

We have laid the platform for this already with the launch of our smart audit platform, KPMG Clara, in 2017.

Audit solutions for today's world

We recognize that in order to deliver quality audits, we must continually evolve and develop our technology solutions to keep pace with today's digital world.

That is why we embarked on a process of reimagining our audit platform, workflow and methodology to provide enhanced consistency and support to our audit engagement teams, deliver more detailed insights to our clients, and future-proof our systems for the expected continued development of new technologies such as robotic process automation, machine learning and cognitive technologies.

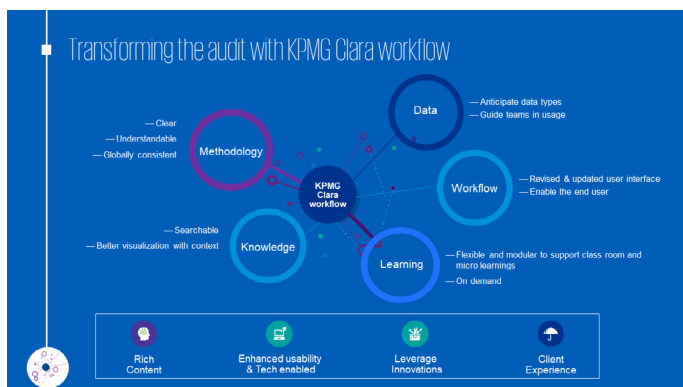
The continuation of this process will see a new workflow and revised audit methodology embedded into the KPMG Clara platform. Limited deployment of the new KPMG Clara Workflow, took place during 2019, and full deployment globally started in 2020 and is expected to be completed by the end of 2022.

The release of the KPMG Clara workflow and revised audit methodology is an important milestone in KPMG's journey to innovate, digitalize and transform the audit experience for our people.

It is a significant investment that underlines our commitment to audit quality, consistency and innovation.

Bringing it all together in KPMG Clara

The KPMG Clara smart audit platform brings together KPMG's Audit Data & Analytics (D&A) capabilities, innovative new technologies, collaboration capabilities and our new KPMG Clara workflow.



Creating the new KPMG Clara Workflow

The new KPMG Clara, workflow will be used by our audit teams to execute and document KPMG audits. It will guide audit teams through a series of steps in a logical sequence aligned to the applicable auditing standards, with a clear display of information visuals, and guidance available at the moment of need, and with embedded advanced digital audit capabilities. The workflow and revised audit methodology will also be scalable – adjusting the requirements to the size and complexity of the audit engagement. This globally-driven project will significantly overhaul and redesign the execution of an audit by KPMG professionals and clearly drive audit quality and global consistency.

Through the use of data mining and tracking of relevant engagement level data indicators, the KPMG Clara workflow will also facilitate member firms' monitoring of audit execution at the engagement level.

Once the KPMG Clara workflow has been fully deployed our predecessor audit workflow tool, eAudIT, will be retired.

Strategically embedding the use of data through digital audit capabilities

KPMG Clara also allows us to more seamlessly build digital audit capabilities into our audits. Digital audit routines are capable of interrogating and analysing vast quantities of data.

KPMG's audit, is designed to:

- enhance audit quality; by providing a deeper understanding of data populations, giving focus to higher risk transactions;
- be secure; by restricting access to data both in transit and within KPMG's IT environments; and
- be transparent; by facilitating detailed analysis to uncover the reasons behind, and root causes of, outliers and anomalies and provide increased visibility into higher risk transactions and process areas.

Digital audit capabilities and routines are built on principles and professional standards underlying an audit and do not relieve auditors of their responsibilities.

Current capabilities in this area facilitate the performance of planning and risk assessment activities and substantive procedures, and include capabilities that:

- enable the analysis of account balances and journal entry data
- automate 'period on period' balances comparison and 'time series' evolution information
- enable the analysis of sub-ledger, transactional data over certain business processes and accounts.



Together with our KPMG Clara platform, we are significantly investing in D&A capabilities and paving the way for the increasing use of emerging technologies such as robotic process automation and machine learning — which will take the power of technology applied in the audit to an even greater level.

Independence, integrity, ethics and objectivity

Overview

Auditor independence is a cornerstone of international professional standards and regulatory requirements.

KPMG International has detailed independence policies and procedures, incorporating the requirements of the IESBA Code of Ethics. These are set out in KPMG's GORMM Manual, which applies to all KPMG firms. Automated tools, which are required to be used for every prospective engagement to identify potential independence and conflict of interest issues, facilitate compliance with these requirements.

These policies are supplemented by other processes to ensure compliance with the standards issued by the Lithuanian Chamber of Auditors and the Authority of Audit, Accounting, Property Valuation and Insolvency Management. These policies and processes cover areas such as firm independence (covering, for example, treasury and procurement functions), personal independence, firm financial relationships, post-employment relationships, partner rotation and approval of audit and non-audit services.

The Partner-in-Charge of the Global Independence Group, who is supported by a core team of specialists to help ensure that robust and consistent independence policies and procedures are in place at KPMG firms, and that tools are available to help the firms and their personnel to comply with these requirements.

KPMG Baltics, UAB has a designated Ethics and Independence Partner (EIP) who has primary responsibility for the direction and execution of ethics and independence policies and procedures in KPMG Baltics, UAB. The EIP is responsible for communicating and implementing KPMG global policies and procedures and ensuring that local policies and procedures are established and effectively implemented when they are more stringent than the global requirements. The EIP fulfils this responsibility through:

- implementing/monitoring the ethics and independence quality control process and structure within the firm;
- approving/appointing partners responsible for ethics and independence within the firm;
- overseeing the processes related to the evaluation of specific independence threats in connection with clients and prospective clients;

- participating in the development and delivery of training materials;
- monitoring compliance with policies;
- implementing procedures to address non-compliance; and
- overseeing the disciplinary process for ethics and independence matters.

Amendments to KPMG International's ethics and independence policies in the course of the year are included in regular quality and risk communications with all KPMG firms. KPMG firms are required to implement changes as specified in the communications, and this is checked through the internal monitoring programs described in chapter *Internal monitoring and compliance programs*.

KPMG Baltics, UAB partners and employees are required to consult with the EIP on certain matters as defined in the GORMM Manual. The EIP may also be required to consult with the Global Independence Group, depending upon the facts and circumstances.

Personal financial independence

KPMG International policies require that KPMG firms and KPMG professionals are free from prohibited financial interests in, and prohibited financial relationships with, KPMG firm assurance and audit clients (by definition, 'audit client' includes its related entities or affiliates), their management, directors, and, where required, significant owners. All KPMG partners — irrespective of their firm or function — are generally prohibited from owning securities of any audit client of any KPMG firm.

KPMG firms use a web-based independence compliance system (KICS) to assist KPMG professionals in their compliance with personal independence investment policies. This system contains an inventory of publicly available investments and provides a tracking mechanism for required users to report acquisitions and disposals of their financial interests. The system facilitates monitoring by identifying and reporting impermissible investments and other non-compliant activity (i.e., late reporting of an investment acquisition).

All partners and all manager grade and above client-facing employees are required to use the KICS system prior to entering into an investment to identify whether they are able to do so. They are also required to maintain a record of all of their investments in publicly traded entities in KICS, which automatically notifies them if any investment subsequently becomes restricted. Newly restricted investments are required to be disposed of within 5 business days of the notification. KPMG monitors partner and manager compliance with this requirement as part of our program of independence compliance audits of professionals.



The Global Independence Group provides guidance and required procedures relating to the audit and inspection by KPMG firms of personal compliance with KPMG's independence policies. This includes sample criteria including the minimum number of professionals to be audited annually.

Employment relationships

Any KPMG Baltics, UAB professional providing services to an audit client irrespective of function is required to notify the Ethics and Independence Partner if he or she enters into employment negotiations with that audit client. For partners, this requirement extends to any audit client of any KPMG firm that is a public interest entity.

Former members of the audit team or former partners of KPMG Baltics, UAB are prohibited from joining an audit client in certain roles unless they have disengaged from all significant connections to KPMG Baltics, UAB, including payments which are not fixed and predetermined and/or would be material to KPMG Baltics, UAB, and ceased participating in KPMG Baltics, UAB business and professional activities.

Key audit partners and members of the chain of command for an audit client that is a public interest entity are subject to time restrictions (referred to 'cooling-off' periods) that preclude them from joining that client in certain roles until a defined period of time has passed.

We communicate and monitor requirements in relation to employment and partnership of KPMG Baltics, UAB professionals by audit clients.

Firm financial independence

KPMG firms are required to also be free from prohibited interests in, and prohibited relationships with, audit clients, their management, directors and, where required, significant owners.

In common with other KPMG firms, KPMG Baltics, UAB uses KICS to record its own, direct and material indirect investments in listed entities and funds (or similar investment vehicles) as well as in non-listed entities or funds. This includes investments held in associated pension, and employee benefit plans.

Additionally, KPMG Baltics, UAB is required to record in KICS all borrowing and capital financing relationships, as well as custodial, trust and brokerage accounts that hold firm assets.

On an annual basis, KPMG Baltics, UAB confirms compliance with independence requirements as part of the Risk Compliance Program.

Business relationships/suppliers

KPMG Baltics, UAB has policies and procedures in place

that are designed to ensure its business relationships with audit clients are maintained in accordance with the IESBA Code of Ethics and other applicable independence requirements, such as those promulgated by the SEC.

Independence clearance process

KPMG Baltics, UAB follows specific procedures to identify and evaluate threats to independence related to prospective audit clients that are public interest entities; these procedures, also referred to as 'the independence clearance process,' required to be completed prior to accepting an audit engagement for these entities.

Independence training and confirmations

All KPMG Baltics, UAB partners and client service professionals, as well as certain other individuals, are required to complete independence training that is appropriate to their grade and function upon joining KPMG Baltics, UAB and on an annual basis thereafter.

New partners and client service employees who are required to complete this training should do so by the earlier of (a) thirty days after joining KPMG Baltics, UAB, or (b) before providing any services to, or becoming a member of the chain of command for, any audit client.

We also provide all partners and employees with annual training on:

- the Global Code of Conduct and ethical behavior, including KPMG's anti-bribery policies, compliance with laws, regulations, and professional standards; and
- reporting suspected or actual non-compliance with laws, regulations, professional standards, and KPMG's policies.

New partners and employees are required to complete this training within three months of joining KPMG Baltics, UAB.

All KPMG partners and employees are required to sign, upon joining KPMG Baltics, UAB and thereafter, an annual confirmation stating that they have remained in compliance with applicable ethics and independence policies throughout the year.

Non-audit services

All KPMG firms are required, at a minimum, to comply with the IESBA Code of Ethics and applicable laws and regulations related to the scope of services that can be provided to audit clients.

KPMG Baltics, UAB is required to establish and maintain a process to review and approve all new and modified services that are developed by KPMG Baltics, UAB. KPMG Baltics, UAB's EIP is involved in the review of potential independence issues related to these new or modified services.



In addition to identifying potential conflicts of interest Sentinel™, facilitates compliance with independence requirements. Certain information on all prospective engagements including detailed service descriptions deliverables and estimated fees must be entered into Sentinel™ as part of the engagement acceptance process. When the engagement is for an audit client, an evaluation of potential independence threats and safeguards is also required to be included in the Sentinel™ submission.

Lead audit engagement partners (LAEPs) are required to maintain group structures for their publicly traded and certain other audit clients including as their related entities or affiliates in Sentinel™. They are also responsible for identifying and evaluating any independence threats that may arise from the provision of a proposed non-audit service and the safeguards available to address those threats. For entities for which group structures are maintained, Sentinel enables LAEPs to review and request revision, approve, or deny, any proposed service for those entities worldwide. For approved proposed services, Sentinel designates a timeframe during which the approval remains valid. Upon expiration of the established timeframe, the services are required to be complete or be re-evaluated for permissibility; otherwise, the services are required to be exited.

KPMG global independence policies prohibit member firm audit partners from being evaluated on, or compensated based on, their success in selling non-assurance services to their audit clients.

Fee dependency

KPMG International's policies recognize that self-interest or intimidation threats may arise when the total fees from an audit client represent a large proportion of the total fees of the KPMG firm expressing the audit opinion. These policies require firms to consult with their Area Quality & Risk Management Leader where it is expected that total fees from an audit client will exceed 10% of the annual fee income of the member firm for two consecutive years. In the event that the total fees from a public interest entity audit client and its related entities were to represent more than 10% of the total fees received by a particular member firm for two consecutive years these policies further require that:

- this be disclosed to those charged with governance at the audit client; and
- a partner from another KPMG member firm be appointed as the Engagement Quality Control (EQC) reviewer.

No audit client accounted for more than 10% of the total fees received by KPMG Baltics, UAB over the last two years.

Resolving conflicts of interest

Conflicts of interest can arise in situations where KPMG partners or employees have a personal connection with the client which may interfere, or be perceived to interfere, with their ability to remain objective, or where they are personally in possession of confidential information relating to another party to a transaction. Consultation with the Risk Management Partner (RMP) or the Ethics and Independence Partner (EIP) is required in these situations.

KPMG International policies are also in place to prohibit KPMG partners and staff from offering or accepting inducements, including gifts and hospitality to or from audit clients, unless the value is trivial and inconsequential, is not prohibited by relevant law or regulation and is not deemed to have been offered with the intent to improperly influence the behavior of the recipient or which would cast doubt on the individual's or the member firm's integrity, independence, objectivity or judgment.

All KPMG firms and personnel are responsible for identifying and managing conflicts of interest, which are circumstances or situations that have, or may be perceived to have an impact on a firm's and/or its partners' or employees' ability to be objective or otherwise act without bias.

All KPMG firms are required to use Sentinel™ for potential conflict identification so that these can be addressed in accordance with legal and professional requirements.

KPMG Baltics, UAB has a risk management resources who are responsible for reviewing any identified potential conflict and working with the affected member firms to resolve the conflict, the outcome of which are required to be documented.

Escalation and dispute resolution procedures are in place for situations in which agreement cannot be reached on how to manage a conflict. If a potential conflict issue cannot be appropriately mitigated, the engagement is declined or terminated.

Independence breaches

All KPMG Baltics, UAB personnel are required to report an independence breach as soon as they become aware of it to the EIP. In the event of failure to comply with the firm's independence policies, whether identified in the compliance review, self-declared or otherwise, professionals are subject to an independence disciplinary policy. All breaches of independence rules are required to be reported to those charged with governance as soon as possible except where alternative timing for less significant breaches has been agreed to with those charged with governance.

KPMG Baltics, UAB has a documented and communicated disciplinary policy in relation to breaches of independence policies incorporating incremental sanctions reflecting the seriousness of any violations.



Matters arising are factored into our promotion and compensation decisions and, in the case of engagement leaders and managers, are reflected in their individual quality and risk metrics.

Compliance with laws, regulations, anti-bribery and corruption

Compliance with laws, regulation and standards is a key aspect for everyone at KPMG Baltics, UAB. In particular, we have zero tolerance of bribery and corruption.

We prohibit involvement in any type of bribery — even if such conduct is legal or permitted under applicable law or local practice. We also do not tolerate bribery by third-parties, including by our clients, suppliers or public officials.

Further information on KPMG International anti-bribery and corruption policies can be found on the [anti-bribery and corruption site](#).

Partner rotation

KPMG International partner rotation policies are consistent with the requirements of the IESBA Code of Ethics and require all member firms to comply with any stricter applicable rotation requirements.

KPMG Baltics, UAB partners are subject to periodic rotation of their responsibilities for audit clients under applicable laws, regulations, independence rules and KPMG International policy. These requirements place limits on the number of consecutive years that partners in certain roles may provide audit services to a client, followed by a “time-out” period during which time these partners may not:

- participate in the audit;
- provide quality control for the audit;
- consult with the engagement team or the client regarding technical or industry-specific issues;
- in any way influence the outcome of the audit;
- lead or coordinate professional services at the client;
- oversee the relationship of the firm with the audit client; or
- have any other significant or frequent interaction with senior management or those charged with governance at the client.

As to the Law on Audit of Financial Statements of the Republic of Lithuania, an audit engagement leader shall not be a part of an audit team on all public interest entities for more than 5 consecutive years and take 3 years “time-out” period.

KPMG Baltics, UAB monitors the rotation of audit engagement leaders (and any other key roles, such as the Key Audit Partner and Engagement Quality Control (EQC)

Reviewer, where there is a rotation requirement) and develops transition plans to enable allocation of partners with the necessary competence and capability to deliver a consistent quality of service to clients.

Recruitment, development and assignment of appropriately qualified people



One of the key drivers of quality is ensuring that KPMG professionals have the appropriate skills and experience, passion and purpose, to deliver high quality audits. This requires the right of recruitment, development, reward, promotion, retention and assignment of professionals.

Recruitment

KPMG Baltics, UAB is committed to building an extraordinary people experience for all current and prospective KPMG partners and employees.

Our recruitment strategy is focused on drawing entry-level talent from a broad talent base, including relationships with established universities, colleges and business schools.

All candidates submit an application and are employed following a variety of selection processes, which may include application screening, competency-based interviews, psychometric and ability testing, and qualification/ reference checks. These leverage fair and job-related criteria to ensure that candidates possess the appropriate skills and experience to perform competently, are suitable and best placed for their roles.

Where individuals are recruited for senior grades, a formal independence discussion is conducted with them by the Ethics and Independence Partner or a delegate. KPMG Baltics, UAB does not accept any confidential information belonging to the candidate’s former firm/employer.

Personal development

KPMG Baltics, UAB approach to performance development, ‘Open Performance Development’ is built around the Everyone a Leader performance principles, and includes:

- Global role profiles(including role profiles specific to audit quality accountabilities and responsibilities);
- a goal library(including audit quality content); and
- standardized review forms(with provision for audit quality ratings).

Open Performance Development is linked to the KPMG Values and designed to articulate what is required for success — both individually and collectively. We know that by being clear and consistent about the behavior we’re looking for and rewarding those who demonstrate them, we will continue to drive a relentless focus on audit quality.



At the same time, we are driving a shift in our performance-driven culture, supported by and enacted through leading technology that allows us to embed audit quality into the assessment of performance and the decisions around reward as well as drive consistency across the global organization.

KPMG Baltics, UAB monitors quality and compliance incidents and maintains quality and compliance metrics in assessing the overall evaluation, promotion and remuneration of partners and directors and managers. These evaluations are conducted by performance managers and partners who are in a position to assess performance.

Inclusion and diversity programs

KPMG Baltics, UAB is committed to fostering an inclusive culture for all. Being inclusive enables us to bring together successful teams with the broadest range of skills, experiences and perspectives.

Our leadership and management teams also need to reflect the diversity within our firm and the diversity of our clients.

We believe that the established KPMG Global Inclusion and Diversity strategy provides the framework to drive the actions that are necessary to promote inclusion and diversity at KPMG Baltics, UAB and across all KPMG firms.

Reward and promotion

KPMG has compensation and promotion policies that are informed by market data, clear, simple, and linked to the performance review process. This helps our partners and employees understand what is expected of them and what they can expect to receive in return. The connection between performance and reward is achieved through calibration/moderation meetings where relative performance across a peer group is discussed and used to inform reward decisions.

Reward decisions are based on consideration of both individual and firm performance.

The extent to which our people feel their performance has been reflected in their reward is measured through the Global People Survey, with action plans developed accordingly.

Promotion

The results of performance evaluations directly affect the promotion and remuneration of partners and employees and, in some cases, their continued association with KPMG.

Partner admissions

Our process for admission to partnership is rigorous and thorough, involving appropriate members of leadership. Our criteria for admission to the partnership are consistent with our commitment to professionalism and integrity, quality, and being an employer of choice.

Assignment of professionals

KPMG Baltics, UAB has procedures in place to assign both engagement partners and other professionals to a specific engagement on the basis of his or her skill sets, relevant professional and industry experience, and the nature of the assignment or engagement. Function heads are responsible for the partner assignment process. Key considerations include partner experience, and capacity, based on an annual partner portfolio review, to perform the engagement in view of the size, complexity and risk profile of the engagement and the type of support to be provided (i.e., the engagement team composition and specialist involvement).

Audit engagement partners are required to be satisfied that their engagement teams have appropriate competencies, training and capabilities, including time, to perform audit engagements in accordance with our audit methodology, professional standards and applicable legal and regulatory requirements. This may include involving specialists from our own firm, other KPMG member firms or external experts.

When considering the appropriate competence and capabilities expected of the engagement team as a whole, the engagement partner's considerations may include the following:

- an understanding of, and practical experience with, audit engagements of a similar nature and complexity through appropriate training and participation
- an understanding of professional standards and legal and regulatory standards requirements
- appropriate technical skills, including those related to relevant information technology and specialized areas of accounting or auditing
- knowledge of relevant industries in which the client operates
- ability to apply professional judgment,
- an understanding of KPMG's quality control policies and procedures; and
- Quality Performance Review (QPR) results and results of regulatory inspections.

Insights from our people — Global People Survey (GPS)

Annually KPMG Baltics, UAB measures its people's attitudes and their overall level of engagement through the Global People Survey (GPS). This survey runs (annually for Global Board countries) and provides an overall measure of our people's engagement through an Engagement Index as well as insights into areas driving engagement which may be strengths or opportunities. Results can be analyzed by functional or geographic area, grade, role, gender to provide additional focus for action. Additional insight is provided on how we are faring on categories known to impact employee engagement .



We also cover areas of focus which are directly relevant to audit quality; the survey includes specific audit quality related questions that all individuals who participated in audit respond to, giving us a particular data set for audit quality related matters.

The survey also specifically provides KPMG Baltics, UAB leadership and KPMG global leadership with results related to quality and risk behaviors, audit quality, upholding the KPMG Values, employee and partner attitudes to quality, leadership and tone at the top.

KPMG Baltics, UAB participates in the GPS, monitors results and takes appropriate actions to communicate and respond to the findings of the survey. The results of the GPS are also aggregated for the entire global organization and are presented to the Global Board each year and appropriate follow-up actions agreed.

Commitment to technical excellence and quality service delivery



We provide all professionals with the technical training and support they need to perform their roles. This includes access to internal networks of specialists and professional practice departments (DPP), either to provide resources to the engagement team or for consultation. Where the right resource is not available within KPMG Baltics, UAB, the firm accesses a network of highly skilled KPMG professionals in other KPMG firms.

At the same time audit policies require all KPMG audit professionals to have the appropriate knowledge and experience for their assigned engagements.

Lifetime learning strategy

Formal training

Annual training priorities for development and delivery are identified by the Audit Learning and Development steering groups at global, regional and where applicable, at a local level. Training is delivered using a blend of learning approaches and performance support to assist auditors on the job.

Mentoring and on the job training

Learning is not confined to single approach — rich learning experiences are available when needed through coaching and just in time learning, available at the click of a mouse and aligned with job specific role profiles and learning paths.

Mentoring and on-the-job experience play key roles in developing the personal qualities important for a successful career in auditing, including professional judgment, technical excellence and instinct.

We support a coaching culture throughout KPMG as part of enabling KPMG professionals to achieve their full potential and in still that every team member is responsible for

building the capacity of the team, coaching other team members and sharing experiences.

The continuing education of statutory auditors

Based on the Law on Audit of Financial Statements of the Republic of Lithuania, auditors must continuously develop their professional qualifications (to complete, every three consecutive years, at least 120 hours of courses in professional development courses organized by the Chamber of Auditors or in courses other than those organized by the Chamber of Auditors or to complete an equivalent course of development of professional qualifications).

All KPMG partners and professionals devote to relevant professional development activities at least 20 hours minimum per year and at least 120 hours over a three-year period.

Licensing and mandatory requirements for IFRS and US GAAP engagements

Licensing

All KPMG Baltics, UAB professionals are required to comply with applicable professional license rules and satisfy the Continuing Professional Development (CPD) requirements in the jurisdiction where they practice. KPMG International policies and procedures are designed to facilitate compliance with license requirements. We are responsible for ensuring that audit professionals working on engagements have appropriate audit, accounting and industry knowledge and experience in the local predominant financial reporting framework – Business Accounting Standards of the Republic of Lithuania.

Mandatory requirements – IFRS and U.S. GAAP engagements

In addition, KPMG has specific requirements for partners, managers and Engagement Quality Control (EQC) reviewers working on IFRS engagements in countries where IFRS is not the predominant financial reporting framework.

Similar policies apply to engagements performed outside the U.S. to report on financial statements or financial information prepared in accordance with U.S. GAAP and/or audited in accordance with U.S. auditing standards, including reporting on the effectiveness of the entity's internal control over financial reporting (ICOFR). These require that at a minimum, all partners, managers, and, if appointed, the EQC reviewers (and for engagements conducted in accordance with US GAAP and/or US auditing standards engagements, the engagement partner, engagement team members and, if appointed the EQCR reviewers) assigned to the engagement have completed relevant training and that the engagement team, collectively, have sufficient experience to perform the engagement or have implemented appropriate safeguards to address any shortfalls.



Access to specialist networks

Our engagement teams have access to a network of local KPMG specialists either within their firm or in other KPMG firms. These specialists receive the training they need to ensure they have the competencies, capabilities and objectivity to appropriately fulfill their role.

The need for specialists to be assigned to an audit engagement in an areas such as information, technology, tax, treasury, actuarial, forensic and valuations is considered as part of the audit engagement acceptance and continuance process, as well as during the conduct of the engagement.

Culture of consultation

Encouraging a culture of consultations

KPMG encourages a strong culture of consultation that supports engagement teams at KPMG firms throughout their decision-making processes and is a fundamental contributor to audit quality. KPMG Baltics, UAB promotes a culture in which consultation is recognized as a strength and that encourages all KPMG professionals to consult on difficult or contentious matters.

To, help with this, firms are required to have established protocols for consultation and documentation of significant accounting and auditing matters, including procedures to facilitate resolution of differences of opinion on engagement issues. In addition, the GQRMM includes mandatory consultation requirements on certain matters.

Technical consultation and global resources

Technical auditing and accounting support are available to member firms through the Global Audit Methodology Group (GAMG), KPMG Global Solutions Group (KGSG) the ISG and the PCAOB Standards Group (PSG).

Global Audit Methodology Group (GAMG)

KPMG's audit methodology is developed and maintained by the Global Audit Methodology Group (GAMG) (formally the KGSG Audit Methodology). The GAMG develops our audit methodology based on the requirements of the applicable auditing standards – International Standards on Auditing, PCAOB and AICPA.

KPMG Global Solutions Group (KGSG)

The KGSG and GAMG work collaboratively to drive support member firms practices through collaboration, innovation and technology. We have made significant investment in our audit methodology and tools with the core focus of improving audit quality and global consistency.

Key areas of work performed include:

- developing innovative audit capabilities (i.e. technology solutions) and deploying and using advanced audit solutions;

- deploying KPMG Clara — our smart audit platform, incorporating advanced technologies, data science, audit automation, data visualization and more;
- enhancing KPMG's audit methodology, workflow and knowledge used by member firms' audit professionals.

With locations, in each of the three KPMG regions (Americas, EMA and ASPAC), the KGSG and GAMG teams comprise professionals with backgrounds in audit, IT, data science, mathematics, statistics, and more from around the world who bring diverse experiences and innovative ways of thinking to further evolve KPMG's audit capabilities.

International Standards Group (ISG)

The ISG works with Global IFRS topic teams with geographic representation from around the world and the IFRS Panel and ISA Panel to promote consistency of interpretation of IFRS and auditing requirements between member firms, identify emerging issues, and develop global guidance on a timely basis.

PCAOB Standards Group (PSG)

The PCAOB Standards Group (PSG) comprises a dedicated group of professionals with background in PCAOB auditing standards who promote consistency of interpretation of PCAOB auditing standards applied globally in audits of foreign private issuers and non-US components of issuers. The PSG also develops and facilitates trainings for auditors who work on PCAOB audit engagements.

Member firm professional practice resource

Member firms provide consultation support on auditing and technical accounting matters to their audit professionals through professional practice resources (referred to as Department of Professional Practice or DPP). This resource also assists engagement teams where there are differences of opinion either within teams or with the EQC reviewer. Unresolved differences are required to be escalated to senior partners for final resolution. KPMG's International Standards Group and PCAOB Standards Group are also available for consultation support when required.

Performance of effective and efficient audits



How an audit is conducted is as important as the final result. KPMG Baltics, UAB partners and employees are expected to demonstrate certain key behaviors and follow certain policies and procedures in the performance of effective and efficient audits.

Embedding ongoing mentoring, supervision and review

To invest in the building of skills and capabilities of our professionals, KPMG Baltics, UAB promotes a continuous learning environment and supports a coaching culture.



Ongoing mentoring, coaching and supervision during an audit involves:

- engagement partner participation in planning discussions;
- tracking the progress of the audit engagement;
- considering the competence and capabilities of the individual members of the engagement team, including whether they have sufficient time to carry out their work, whether they understand their instructions, and whether the work is being carried out in accordance with the planned approach to the engagement;
- helping engagement team members address any significant matters that arise during the audit and modifying the planned approach appropriately; and
- identifying matters for consultation with more experienced team members during the engagement.

A key part of effective mentoring and supervision is timely review of the work performed so that significant matters are promptly identified, discussed and addressed.

Engagement quality control (EQC) reviewers

The EQC is an important part of KPMG's framework for quality. An EQC reviewer is required to be appointed for audits, including any related review(s) of interim financial information, of all listed entities, non-listed entities with a high public profile, engagements that require an EQC review under applicable laws or regulations, and other engagements as designated by the Risk Management Partner or country Head of Audit.

An EQC review provides reasonable assurance that the team has appropriately identified significant risks, including fraud risks, and has designed and executed audit procedures to address them.

EQC reviewers must meet training and experience criteria to perform a quality control review for a particular engagement. Reviewers are independent of the engagement team and audit clients and have the appropriate experience and knowledge to perform an objective review of the more critical decisions and judgments made by the engagement team and the appropriateness of the financial statements.

The audit is completed only when the EQC reviewer is satisfied that all significant questions raised have been resolved, though the engagement partner is ultimately responsible for the resolution accounting and auditing matters,

KPMG is continually seeking to strengthen and improve the role that the EQC review plays in member firms audits, and have taken a number of actions to reinforce this including issuing leading practice guidance, incorporating specific review requirements into our audit workflow, and developing policies relating to recognition, nomination and development of EQC reviewers.

Reporting

Auditing standards and the regulations of Lithuanian Chamber of Auditors largely dictate the format and content of the auditors' report that includes an opinion on the fair presentation in all material respects of the client's financial statements in all material respects. Experienced engagement partners arrive at all audit opinions based on the audit performed.

In preparing auditors' reports, engagement partners have access to extensive reporting guidance and technical support through consultations with our DPP, especially where there are significant matters to be reported to users of the auditors' report, either as a qualification to the audit report or through the inclusion of an 'emphasis of matter' paragraph, as well as key audit matters to be communicated).

Engagement Documentation

Our audit documentation is completed and assembled according to the timeline established by KPMG policy, auditing standards and we have implemented administrative, technical and physical safeguards to protect the confidentiality and integrity of client and firm information.

Insightful, open and honest two-way communication

Two-way communications with those charged with governance, often identified as the audit committee, is key to audit quality and is a key aspect of reporting and service delivery.

At KPMG Baltics, UAB we stress the importance of keeping those charged with governance informed of issues arising throughout the audit. We achieve this through a combination of reports and presentations, attendance at audit committee or board meetings, and, when appropriate, ongoing informal discussions with management and members of the Audit Committee.

Client confidentiality, information security, and data privacy

The importance of maintaining client confidentiality is emphasized through a variety of mechanisms including the KPMG Global Code of Conduct, training, and the annual affidavit / confirmation process, that all KPMG professionals are required to complete.

We have a formal document retention policy concerning the retention period for audit documentation and other records relevant to an engagement in accordance with the relevant IESBA requirements as well as other applicable laws, standards and regulations.

We have clear policies on information security that cover a wide range of areas. Data Privacy policies are in place governing the handling of personal information, and associated training is required for all KPMG Baltics, UAB personnel.



Commitment to continuous improvement



KPMG commits to continually improve the quality, consistency and efficiency of KPMG audits.

Integrated quality monitoring and compliance programs enable member firms to identify quality deficiencies, to perform root cause analysis and develop, implement and report remedial action plans, both in respect of individual audit engagements and the overall system of quality control.

The quality monitoring and compliance programs (see section *Internal monitoring and compliance programs* for details) are globally administered and consistent in their approach across all member firms, including the nature and extent of testing and reporting. KPMG Baltics, UAB compares the results of its internal monitoring programs with the results of those of any external inspection programs and takes appropriate action.

Internal monitoring and compliance programs

KPMG Baltics, UAB monitoring programs evaluate both:

- engagement performance in compliance with the applicable standards, applicable laws and regulation and KPMG International key policies and procedures; and
- KPMG Baltics, UAB compliance with KPMG International key policies and procedures and the relevance, adequacy and effective operation of key quality control policies and procedures.

Our internal monitoring program also contributes to the assessment of whether our system of quality control has been appropriately designed, effectively implemented, and operates effectively. These include:

- Quality Performance Reviews (QPR) and Risk Compliance Programs (RCP), which are conducted annually across the Audit, Tax, and Advisory functions; and
- A cross-functional Global Compliance Review (GCR) program with firms selected for review at various intervals based on identified risk criteria.

The results and lessons from the integrated monitoring programs are communicated internally and appropriate action is taken at local, regional and global levels.

Audit Quality Performance Reviews (QPRs)

The QPR program assesses engagement level performance and identifies opportunities to improve engagement quality.

Risk-based approach

Each engagement leader is reviewed at least once in a 3-year cycle. A risk-based approach is used to select engagements.

KPMG in Lithuania conducts the annual QPR program in accordance with KPMG International QPR instructions.

The reviews are performed at KPMG Baltics, UAB level and are monitored regionally and globally. firm Audit QPR reviews are overseen by a senior experienced lead reviewer independent from the firm.

Reviewer selection, preparation and process

There are robust criteria for selection of reviewers. Review teams include senior experienced lead reviewers that are independent of the member under review.

Training is provided to review teams and others overseeing the process, with a focus on topics of concern identified by audit oversight regulators and the need to be as rigorous as external reviewers.

Evaluations from Audit QPR

Consistent criteria are used to determine engagement ratings and member firm Audit practice evaluations.

Audit engagements selected for review are rated as 'Satisfactory', 'Performance Improvement Needed' or 'Unsatisfactory'.

Reporting

Findings from the QPR program are disseminated to firm professionals through written communications, internal training tools, and periodic partner, manager and staff meetings.

These areas are also emphasized in subsequent inspection programs to gauge the extent of continuous improvement.

Lead Audit Engagement Partners (LAEPs) are notified of less than satisfactory engagement (defined as 'Performance Improvement Needed' or 'Unsatisfactory') ratings on their respective cross-border engagements. Additionally, LAEPs of parent companies/head offices are notified where a subsidiary/affiliate of their client group is audited by a member firm where significant quality issues have been identified during the QPR.

Partners and audit directors in KPMG Baltics, UAB were subject to Quality Performance review in 2019.

Risk Compliance Program (RCP)

KPMG International develops and maintains quality control policies and processes that apply to all KPMG firms. These policies and processes, and their related procedures, include the requirements of ISQC 1. During the annual RCP, we perform a robust assessment program consisting of documentation of quality controls and procedures, related compliance testing and reporting of exceptions, action plans and conclusions.

The objectives of the RCP are to:

- document, assess and monitor the extent of compliance of KPMG Baltics, UAB system of quality control with Global Quality & Risk Management (GQ&RM) policies and key legal and regulatory requirements relating to the delivery of professional services; and



- provide the basis for KPMG member firm to evaluate that the firm and its personnel comply with relevant professional standards and applicable legal and regulatory requirements.

Where deficiencies are identified, we are required to develop appropriate action plans and monitor the status of each action item.

Global Compliance Review (GCR) Program

Each KPMG firm is subject to a GCR conducted by KPMG International’s GCR team, independent of the member firm, at various intervals based on identified risk criteria.

The GCR team performing the reviews is independent of the firm and is objective and knowledgeable of GQ&RM policies. GCRs assess compliance with selected KPMG International policies and procedures and share best practices among member firms. The GCR provides an independent assessment of:

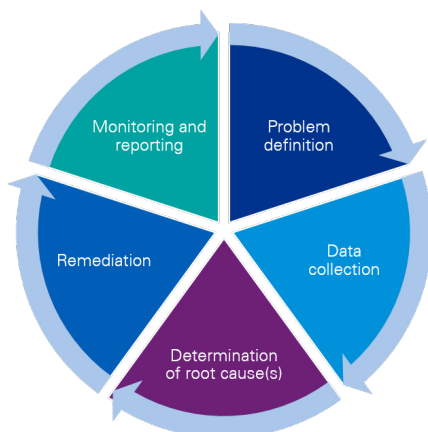
- a firm’s commitment to quality and risk management (tone at the top) and the extent to which its overall structure, governance and financing support and reinforce this commitment;
- a firm’s compliance with KPMGI policies and procedures; and
- the robustness with which the member firm performs its own compliance program (RCP).

KPMG Baltics, UAB develops action plans to respond to all GCR findings and agrees these with the GCR team. Our progress on action plans is monitored by the GCR central team. Results are reported to the GQ&RM Steering Group and, where necessary, to appropriate KPMG International and regional leadership,

Root Cause Analysis (RCA)

KPMG Baltics, UAB performs root cause analysis to identify and address audit quality issues in order to prevent them from recurring and help identify good practices as part of continuous improvement.

The Global RCA 5 Step Principles are as follows:



It is the responsibility of all KPMG firms to perform RCA and thereby identify and subsequently develop appropriate remediation plans for the audit quality issues identified.

KPMG Baltics, UAB, Head of Audit is responsible for the development and implementation of action plans as a result of RCA including identification of solution owners. Our Risk Management Partner monitors their implementation.

Recommendations for improvements

At a global level, through the Global Audit Quality Council and the GQ&RM Steering Group, KPMG International reviews the results of the quality monitoring programs, reviews firm root causes and planned remedial actions and develops additional global remediation actions as required.

Global remediation actions developed by KPMG International are aimed at changing culture and behavior across the global organization and at driving consistent engagement team performance within KPMG firms. The remediation actions have been implemented through the development of global training, tools and guidance to drive consistency, ensure the fundamentals are right and that best practice is shared across the global organization.

External feedback and dialogue

Regulators

In Lithuania the Lithuanian Chamber of Auditors and the Authority of Audit, Accounting, Property Valuation and the Insolvency Management have been carrying out independent inspections for a number of years. The most recent quality assurance review conducted by the Authority of Audit, Accounting, Property Valuation and Insolvency Management was in June 2018, the scope of which included a review of KPMG Baltics, UAB, being a registered audit firm, and a review of the individual Lithuanian certified auditors employed by the company.

Client feedback

We proactively seek feedback from clients through in-person conversations and third-party surveys to monitor their satisfaction with services delivered. We endeavor to take this feedback and make dynamic changes at both the engagement level and firm level to meet clients’ needs.

Monitoring of complaints

We have procedures in place for handling complaints received from clients relating to the quality of our work. These procedures include the identification on many engagements of a more senior partner who is responsible for the specific client relationships and is the individual who is responsible to address any complaints raised. In most other cases, the Senior Partner of KPMG Baltics, UAB is responsible for handling complaints and concerns.



Financial information

Revenue for the year ended 30 September 2020 is as follows and is unaudited at the date of this report:

Revenue	30 Sep 2020 EUR thousand
Statutory audit of annual and consolidated financial statements of public-interest entities and entities belonging to a group of undertakings whose parent undertaking is a public-interest entity	2 039
Statutory audit of annual and consolidated financial statements of other entities	2 367
Total audit revenue	4 436
Non-audit services to audit clients	532
Non-audit services to other clients	2 967
Total revenue	7 935



Partner remuneration

Partners are remunerated out of the distributable profits of the firm and are personally responsible for funding pensions and other benefits. The Senior Partner monitors the allocation of profits between partners to ensure that a consistent approach is adopted, and that remuneration is determined by objectives set for each partner on a number of matters relevant to their role in the group. These include

quality of work, performance in client service, growth in revenue and profitability, leadership and living the values of the firm. Audit partner remuneration setting takes no account of the level of non-audit services provided to the partner's audit clients. The Senior Partner reports to the Chairman of the KPMG CEE region in respect of all remuneration allocations to partners in KPMG Baltics, UAB.



Network arrangements

Legal structure



Legal structure for the Financial Year ending 30 September 2020

KPMG Baltics, UAB, is affiliated with KPMG International Cooperative (“KPMG International”). KPMG International is a Swiss cooperative which is a legal entity formed under Swiss law. Prior to 1 October 2020 it was the coordinating entity for the network and the entity with which all the member firms of the KPMG organization were required to be affiliated with. Further details about KPMG International and its business activities, including our relationship with it for the financial year ending 30 September 2020, are available in the ‘Governance and leadership’ section of the [2019 report](#).

KPMG is the registered trademark of KPMG International and is the name by which the member firms are commonly known. The rights of member firms to use the KPMG name and marks are contained within agreements with KPMG International.

Pursuant to their membership agreements with KPMG International, member firms are required to comply with KPMG International’s policies, procedures and regulations including quality standards governing how they operate and how they provide services to clients to compete effectively. This includes having a firm structure that ensures continuity and stability and being able to adopt global strategies, share resources (incoming and outgoing), service multi-national clients, manage risk, and deploy global methodologies and tools.

KPMG International is an entity that is legally separate from each member firm. KPMG International and the member firms are not a global partnership, joint venture or partnership with each other. No member firm has any authority to obligate or bind KPMG International or any other member firm vis-à-vis third parties, nor does KPMG International have any such authority to oblige or bind any member firm.

The name of each audit firm that is a member of the organization and the EU/EEA countries in which each firm is qualified as a statutory auditor or has its registered office, central administration or principal place of business are available on <https://assets.kpmg/content/dam/kpmg/xx/pdf/2021/01/list-of-kpmg-audit-entities-located-in-eu-eea.pdf> or in Appendix 3.

Legal structure from 1 October 2020

On 1 October 2020, KPMG Baltics and all other KPMG firms entered into new membership and associated documents, the key impact of which is that all KPMG member firms in the KPMG global organization became members in, or have other legal connections to, KPMG International Limited, an English private company limited by guarantee. From 1 October 2020, KPMG International Limited acts as the coordinating entity for the overall benefit of the KPMG member firms. It does not provide professional services to clients. Professional services to clients are exclusively provided by member firms. Professional services to clients are exclusively provided by member firms.

Further detail on the revised legal and governance arrangements for the KPMG global organization from 1 October 2020 can be found in section ‘Governance and leadership’ of the [2020 KPMG International Transparency Report](#).

KPMG International Limited and the KPMG member firms are not a global partnership, single firm, multinational corporation, joint venture, or in a principal or agent relationship or partnership with each other. No member firm has any authority to obligate or bind KPMG International Limited, any of its related entities or any other member firm vis-à-vis third parties, nor does KPMG International Limited or any of its related entities have any such authority to obligate or bind any member firm.

Total turnover achieved by EU/EEA audit firms resulting from the statutory audit of annual and consolidated financial statements*

Aggregated revenues generated by KPMG firms, from EU and EEA Member States resulting from the statutory audit of annual and consolidated financial statements was EUR 2.8 billion during the year ending 30 September 2020. The EU/EEA aggregated statutory audit revenue figures are presented to the best extent calculable and translated at the average exchange rate prevailing in the 12 months ended 30 September 2020.

* The financial information set forth represents combined information of the separate KPMG firms from EU and EEA Member States that perform professional services for clients. The information is combined here solely for presentation purposes. KPMG International performs no services for clients nor, concomitantly, generates any client revenue.



Responsibilities and obligations of member firms



Under agreements with KPMG International, member firms are required to comply with KPMG International's policies and regulations including quality standards governing how they operate and how they provide services to clients to compete effectively. This includes having a firm structure that ensures continuity and stability and being able to adopt global strategies, share resources (incoming and outgoing), service multinational clients, manage risk, and deploy global methodologies and tools.

Each KPMG firm takes responsibility for its management and the quality of its work. Member firms commit to a common set of KPMG Values (as set out in the Appendices to this document).

KPMG International's activities are funded by amounts paid by member firms. The basis for calculating such amounts is approved by the Global Board and consistently applied to the firms. A firm's status as a KPMG member firm and its participation in the KPMG global organization may be terminated if, among other things, it has not complied with the policies set by KPMG International or any of its other obligations owed to KPMG International.

Professional indemnity insurance



Insurance cover is maintained in respect of professional negligence claims. The cover provides a territorial coverage on a worldwide basis and is principally written through a captive insurer that is available to all KPMG member firms.

Governance structure



The key governance and management bodies of KPMG International are the Global Council, the Global Board, and the Global Management Team.

Global Council

The Global Council focuses on high-level governance tasks and provides a forum for open discussion and communication among member firms.

Among other things, the Global Council elects the Global Chairman) and also approves the appointment of Global Board members. It includes representation from 61 KPMG firms that are "members" of KPMG International as a matter of Swiss law. Sublicensee firms are generally indirectly represented by a member.

Global Board

The Global Board is the principal governance and oversight body of KPMG International. The key responsibilities of the

Global Board include approving global strategy, protecting and enhancing the KPMG brand and reputation overseeing the Global Management Team, and approving policies with which KPMG firms are required to comply

The Global Board includes the Global Chairman, the Chairman of each of the three regions (the Americas; Asia Pacific (ASPAC); and Europe, the Middle East, and Africa (EMA)) and a number of senior partners of member firms.

It is led by the Global Chairman and also includes the Chairman of each of the regions and a number of other member firms senior partners. The list of current Global Board members, is available at <https://home.kpmg/xx/en/home/about/who-we-are/our-leadership.html>.

One of the other Global Board members is elected as the lead director by those Global Board members who are not also members of the Executive Committee of the Global Board ("non-executive" members). A key role of the lead director is to act as liaison between the Global Chairman and the "non-executive" Global Board members.

Global Management Team

The Global Board has delegated certain responsibilities to the Global Management Team. These responsibilities include developing the global strategy by working together with the Executive Committee and jointly recommending the global strategy to the Global Board for its approval. The Global Management Team also supports the member firms in their execution of the global strategy and is responsible for holding them accountable against their commitments.

It is led by the Global Chairman and includes the Global Chief Operating Officer, Global Chief Administrative Officer, global function and infrastructure heads the Global Head of Quality, Risk and Regulatory and the General Counsel.

The list of current Global Management Team members, is available in the Leadership section of KPMG.com.

Global Steering Groups

There is a Global Steering Group for each key function and infrastructure area, chaired by the relevant member of the Global Management Team, and together they assist the Global Management Team in discharging its responsibilities. In particular the Global Audit Steering Group, and Global Quality & Risk Management Steering Group work closely with regional and member firm leadership to:

- Establish and ensure communication of appropriate audit and quality/risk management policies;
- Establish and support effective and efficient risk processes to promote audit quality;
- promote and support strategy implementation in member firms' audit functions, including standards of audit quality; and



- assess and monitor audit quality issues, including those arising from quality performance and regulatory reviews, and focus on best practices that reduce audit quality findings.

The roles of the Global Audit Steering Group and the Global Quality & Risk Management Steering Group are detailed in section “Governance and leadership” of the [2019 KPMG International Transparency Report](#).

Each firm is part of one of three regions (the Americas, ASPAC, and EMA). Each region has a Regional Board comprising a regional chairman, regional chief operating officer, representation from any sub-regions, and other members as appropriate. Each Regional Board focuses specifically on the needs of member firms within their region and assists in the implementation of KPMG International’s policies and processes within the region.

Further details about KPMG International including the governance arrangements for the year ending 30 September 2020, can be found in section “Governance and leadership” of the [2019 KPMG International Transparency Report](#)

Area quality, risk management leaders

The Global Head of Quality, Risk and Regulatory appoints Area Quality & Risk Management Leaders (ARL) who serve a regular and ongoing monitoring and consultation function to assess the effectiveness of a member firm’s efforts and processes to identify, manage and report significant risks that have the potential to damage the KPMG brand. Significant activities of the ARL, including member firm issues identified and related member firm response/remediation, are reported to Global Quality & Risk Management (GQ&RM) leadership.

The objectives of the ARL role are to:

- assist GQ&RM leadership in the monitoring of member firms’ quality and risk activities;
- work with GQ&RM leadership and the International Office of General Counsel (IOGC) when significant brand and legal risk issues occur to assist in ensuring that matters are properly handled; and
- assist in monitoring the effectiveness of firm remediation of significant issues, including identification of the root cause(s) of serious quality incidents.



Statement by the Board of KPMG Baltics, UAB on the effectiveness of quality controls and independence

The measures and procedures that serve as the basis for the system of quality control for KPMG Baltics, UAB outlined in this report aim to provide a reasonable degree of assurance that the statutory audits carried out by our firm complies with the applicable laws and regulations. Because of its inherent limitations, the system of quality controls is not intended to provide absolute assurance that non-compliance with relevant laws and regulations would be prevented or detected.

The Board of KPMG Baltics, UAB has considered:

- the design and operation of the quality control systems as described in this report;
- the findings from the various compliance programs operated by our firm (including the KPMG International Review Programs as described in section *Internal monitoring and compliance programs* and our local compliance monitoring programs); and
- findings from regulatory inspections and subsequent follow up and/or remedial actions.

Taking all of this evidence together, the Board of KPMG Baltics, UAB confirms with a reasonable level of assurance that the systems of quality control within our firm have operated effectively in the year to 30 September 2020.

Further, the Board of KPMG Baltics, UAB confirms that an internal review of independence compliance within our firm has been conducted in the year to 30 September 2020.

Vilnius, 29 January 2021

Members of the Board:

Rokas Kasperavičius, Chairman

Domantas Dabulis

Birutė Petrauskaitė



Appendices

A1

Details of those charged with governance at KPMG Baltics, UAB



Rokas Kasperavičius
National Senior Partner

Rokas Kasperavičius is a Partner of our firm and National Senior Partner starting from 2 October 2015. He has been a partner within KPMG for thirteen years and has served on our board for twelve years.



Domantas Dabulis
Partner

Domantas Dabulis is a Partner of our firm. He has been a partner within KPMG for thirteen years and has served on our board for twelve years.



Birutė Petrauskaitė
Partner

Birutė Petrauskaitė is a Partner of our firm. She has been a partner within KPMG since for 1 October 2017 and has served on our board since 1 January 2018.



Toma Jensen
Partner

Toma Jensen is a Partner of our firm. She has been a partner within KPMG since 1 October 2019.



Appendices

A2

Public Interest Entities

The list of public interest entity audit clients for which KPMG Baltics, UAB has signed an audit opinion in the year ended 30 September 2020 is given below. The definition of public interest for this purpose is that given under the provisions of the Law on Audit of Financial Statements of the Republic of Lithuania.

All audit opinions for below specified public interest entities were issued in respect to the financial statements for the year ended 31 December 2019.

Funds

Lords LB Baltic Fund III
Lords LB Opportunity Fund II
Lords LB Private Equity Fund I
INVL Baltijos Fondas
INVL specialusis sudėtinis fondas
INVL sudėtinis fondas
INVL APDAIRUS
INVL DRASUS
INVL EXTREMO III 16+
INVL MEDIO III 47+
NVL STABILO III 58+
INVL pensijų turto išsaugojimo fondas
INVL pensija 1954-1960
INVL pensija 1961-1967
INVL pensija 1968-1974
INVL pensija 1975-1981
INVL pensija 1982-1988
INVL pensija 1989-1995
INVL pensija 1996-2002
Vitality
Synergy Finance turto taktinio paskirstymo fondas
Nextury Technology Fund

Fund managing companies

Lords LB Asset Management UAB
INVL Asset Management UAB

Entities listed on Vilnius Stock Exchange

Grigeo AB
Invalda INVL AB
Klaipėdos Nafta AB
Vilniaus baldai AB

Financial sector

Compensa Vienna Insurance Group UADB
ERGO Life Insurance SE
PZU Lietuva gyvybės draudimas UAB
Lietuvos draudimas AB

Government entities

Vilniaus šilumos tinklai AB
Lietuvos geležinkeliai AB
Klaipėdos valstybinio jūrų uosto direkcija, VĮ
Lietuvos oro uostai VĮ

Financial brokerage firm

INVL Finasta FMĮ UAB



Appendices

A3

List of KPMG audit entities located in EU & EEA As of 1 October 2020

This is a list of KPMG audit firms as defined in Article 2 (3) of EU Directive 2006/43/EC which are located in EU/EEA countries. It has been prepared solely for the purpose of compliance by KPMG member firms with Regulation (EU) No 537/2014 on specific requirements regarding statutory audit of public-interest entities and repealing Commission Decision 2005/909/EC.

It is prepared on behalf of KPMG International Limited, a company limited by guarantee incorporated in England and Wales, which provides no professional services to clients. To the best of our knowledge, the list is accurate as of 1 October 2020. However, we cannot and do not warrant its accuracy at any given time.

Location	Firm name
Austria	KPMG Austria GmbH Wirtschaftsprüfungs- und Steuerberatungsgesellschaft (Wien)
Austria	KPMG Alpen-Treuhand GmbH Wirtschaftsprüfungs- und Steuerberatungsgesellschaft (Wien)
Austria	KPMG Austria GmbH Wirtschaftsprüfungs- und Steuerberatungsgesellschaft (Linz)
Austria	KPMG Niederösterreich GmbH Wirtschaftsprüfungs- und Steuerberatungsgesellschaft
Belgium	KPMG Bedrijfsrevisoren / KPMG Réviseurs d'Entreprises
Bulgaria	KPMG Audit OOD
Croatia	KPMG Croatia d.o.o. za reviziju
Cyprus	KPMG
Cyprus	KPMG Limited
Czech Republic	KPMG Česká republika Audit, s.r.o.
Denmark	KPMG P/S
Estonia	KPMG Baltics OÜ
Finland	KPMG Oy Ab
Finland	KPMG Julkistarkastus Oy

Location	Firm name
France	KPMG Associés S.A.
France	KPMG Audit Est S.A.S.
France	KPMG Audit FS I S.A.S.
France	KPMG Audit ID S.A.S.
France	KPMG Audit IS S.A.S.
France	KPMG Audit Nord S.A.S.
France	KPMG Audit Ouest S.A.S.
France	KPMG Audit Paris et Centre S.A.S.
France	KPMG Audit Rhône Alpes Auvergne S.A.S.
France	KPMG Audit Sud-Est S.A.S.
France	KPMG Audit Sud-Ouest S.A.S.
France	KPMG Fiduciaire de France
France	KPMG SA
France	SALUSTRO REYDEL S.A.



Appendices

Location	Firm name
Germany	KPMG AG Wirtschaftsprüfungsgesellschaft
Germany	KPMG Bayerische Treuhandgesellschaft Aktiengesellschaft Wirtschaftsprüfungsgesellschaft Steuerberatungsgesellschaft
Gibraltar	KPMG Limited
Greece	KPMG Certified Auditors A.E.
Greece	KPMG Auditing A.E.
Hungary	KPMG Hungária Kft./KPMG Hungary Ltd.
Iceland	KPMG ehf.
Ireland	KPMG
Italy	KPMG S.p.A.
Italy	KPMG Audit S.p.A.
Latvia	KPMG Baltics AS
Liechtenstein	KPMG (Liechtenstein) AG
Lithuania	'KPMG Baltics' UAB
Luxembourg	KPMG Luxembourg
Malta	KPMG
Netherlands	KPMG Accountants N.V.

Location	Firm name
Norway	KPMG Holding AS
Norway	KPMG AS
Poland	KPMG Audyt Services Sp z.o.o.
Poland	KPMG Audyt Sp. Z ograniczoną odpowiedzialnością
Poland	KPMG Audyt Sp. Z ograniczoną odpowiedzialnością Spółka Komandytowa
Portugal	KPMG & Associados - Sociedade de Revisores Oficiais de Contas, S.A.
Romania	KPMG Audit SRL
Slovakia	KPMG Slovensko spol. s r.o.
Slovenia	KPMG Slovenija, podjetje za revidiranje, d.o.o.
Spain	KPMG Auditores, S.L.
Sweden	KPMG AB
United Kingdom	KPMG LLP
United Kingdom	KPMG Audit Holdings Limited
United Kingdom	KPMG Audit Plc
United Kingdom	KPMG Holdings Limited
United Kingdom	KPMG Overseas Services Limited

home.kpmg

home.kpmg/socialmedia



© 2021 "KPMG Baltics", UAB, a Lithuanian limited liability company and a member firm of the KPMG global organization of independent member firms affiliated with KPMG International Limited, a private English company limited by guarantee. All rights reserved.

The information contained herein is of a general nature and is not intended to address the circumstances of any particular individual or entity. Although we endeavor to provide accurate and timely information, there can be no guarantee that such information is accurate as of the date it is received or that it will continue to be accurate in the future. No one should act on such information without appropriate professional advice after a thorough examination of the particular situation.

The KPMG name and logo are registered trademarks or trademarks of KPMG International.