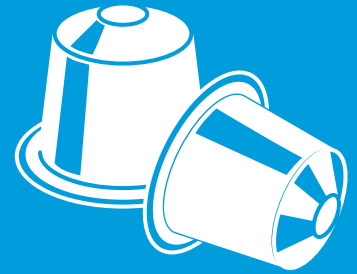




# Digital labour (Robotic process automation) services



A technology-powered service catering to all types of alternative investments

## Automate human activities, partially or fully.



### Privacy and compliance: Limit human exposure to sensitive corporate data

- 🔒 Reduce human error in compliance tasks.



### Quality and accuracy

- 🔒 Reduce quality issues associated with manual data entry.
- 🔒 Deploy new “no-labour” data integrity routines.
- 🔒 Increase security and governance tasks without adding new human labour.



### Process improvement and efficiency

- 🔒 Leverage digitalised data to improve efficiency.
- 🔒 Allow workers to focus on higher value-added activities.



### Speed

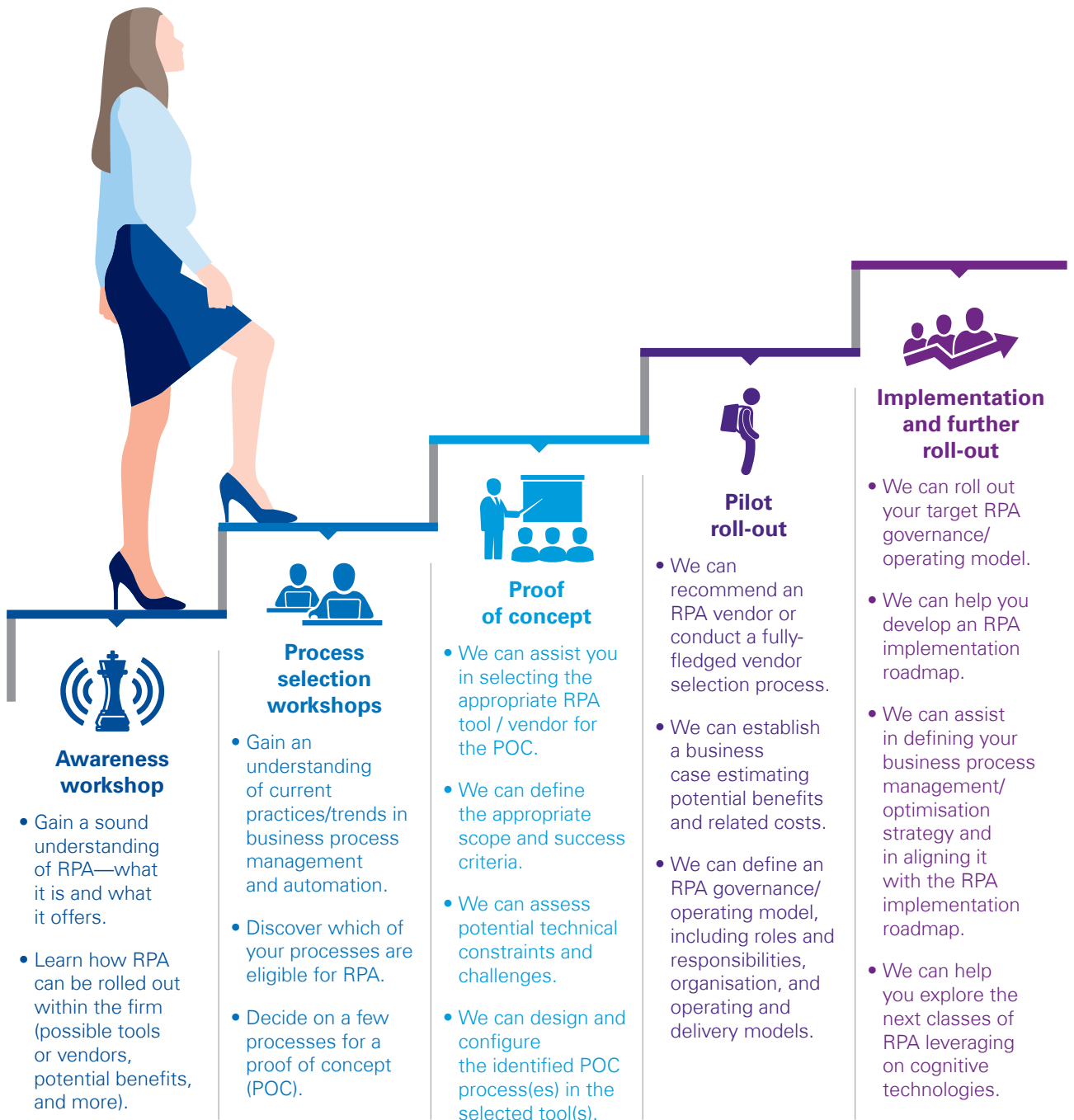
- 🔒 Benefit from work done 365 days a year at 24/7 availability.
- 🔒 Accelerate completion rates of certain tasks, compared to human labour speeds.



### Cost reduction

- 🔒 Manage labour costs more effectively.
- 🔒 Decouple correlation between labour and revenue growth.

# Detailed overview - How we can help you on your RPA journey



We would be happy to discuss a feasibility study with you.

**Feel free to contact us!**

For contact details please go to: [www.kpmg.lu/alternativeinvestments](http://www.kpmg.lu/alternativeinvestments)

