



# Anticipate. Innovate. Deliver.

An Introduction to KPMG in Myanmar



The background of the slide is dark. On the left side, there is a vertical row of several glowing incandescent light bulbs, creating a strong light source and lens flare effects. On the right side, there is a faint, light-colored silhouette of a world map, showing the continents. The overall composition suggests a global or innovative theme.

# Our Promise

With passion and purpose,  
we work shoulder-to-shoulder with you,  
integrating innovative approaches  
and deep expertise to deliver real results.



# About KPMG



**Myanmar**

KPMG is a global network of professional firms providing Audit, Tax and Advisory services across a wide range of industries. KPMG professionals anticipate, innovate and deliver in more than 150 countries. We have more than 189,000 people working in member firms around the world.

KPMG in Myanmar provides a wide range of Tax and Advisory services. Our Myanmar team brings international experiences to solve local problems. The team is supported by the technical and industry knowledge of our global network. This gives us the tools and knowledge to gain a deep understanding of our clients' businesses. It enables our professionals to turn knowledge into value for the benefit of our clients, our people and the capital markets.

At  
KPMG  
We



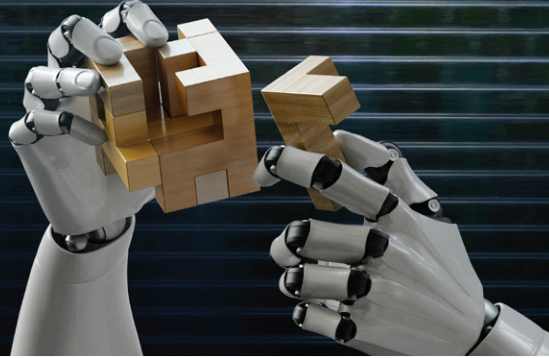
Anticipate



Anticipating tomorrow to deliver the best results today is our philosophy. Ongoing economic uncertainty, the evolving role of government in the marketplace, prospects of a more complex regulatory environment, combined with rapid changes in industries, huge strides in the advancement of digital technology and consumers' rising expectations mean that to be at the forefront of each industry, companies must constantly anticipate change.

In such a fluid economic climate, we believe in anticipating and understanding the changes before they take place. We are ready for tomorrow, and our goal is to make our clients find the best solutions today.

# Innovate



At KPMG, we believe that despite the recent advances in technology, ultimately what still makes the difference to our clients is the experience of working with KPMG people. We work hard to develop and retain the best professionals in the field to best serve our clients. Our people understand both the local and global contexts of business and have a deep understanding of our clients' diverse industries and the complex environment in which they operate.

This, combined with a conscious and calculated expansion of innovation and technology in our Tax and Advisory services, allows us to make the best decisions for our clients. We tailor our services and solutions to suit each client's unique needs and businesses.

# Deliver



What we do is simple. We understand the business climate and industries, we know our clients and we deliver tailor-made services to best serve each client's individual needs using experts in the field and innovative tools.

We are constantly expanding our capabilities as a firm, developing our people and innovating our tools to allow us to stay ahead. We bring long term added value through our real world experience and technical know-how. Our forward looking vision and deep expertise ultimately lead to one goal: Delivering real results to you.



# Our Services

---

## **Specialized Industries**

- Automotive
- Banking
- Construction and Real Estate
- Consumer and Retail
- Energy and Natural Resources
- Government and Public Sector
- Industrial Markets
- Infrastructure
- Insurance
- Life Sciences and Healthcare
- Media
- Private Equity
- Technology
- Telecommunications
- Transport and Logistics

# Tax

---

As a leading tax network, we believe that we – as individual tax professionals and as member firms – have a duty to engage in the discussion and debate surrounding Tax Transparency and Responsibility. As the tax strategies of multinational and domestic companies continue to be examined by both tax authorities and the public alike, we work with our clients to develop tax strategies that are fit for purpose in the tax system of tomorrow.

## **Our Tax services include:**

- Domestic tax advisory
- International tax advisory
- Mergers & Acquisitions
- Tax compliance
- Trade & Customs
- Personal income tax advisory and compliance
- Immigration services

# Advisory

---

KPMG Advisory professionals work with you to navigate the complexities of today's rapidly changing marketplace. We leverage the knowledge and skills across our global network of firms to develop practical recommendations designed to help you work smarter, grow faster and compete better.

We are trusted advisors to many organizations across the globe. They choose us because we are known for our talented people, technical expertise, deep industry insights and our ability to get the job done.

## **Our Advisory services include:**

### **Management Consulting**

- Digital transformation
- Business performance services
- IT assurance services
- Cyber security
- HR transformation

### **Risk Consulting**

- Accounting advisory services
- Enterprise risk management services
- Financial risk management
- Forensic services
- Internal audit, risk and compliance services
- Internal control reviews and advice

### **Deal Advisory**

- Buying a business
- Selling a business
- Post-merger integration services
- Market entry
- Partnering
- Funding a business
- Fixing a business

## Contact us

KPMG in Myanmar  
Kantharyar Office Tower, Unit 03,04,05, Level 19  
Corner of Kan Yeik Thar Road & U Aung Myat Road,  
Mingalar Taung Nyunt Township, Yangon, Myanmar

T: +95 1 937 7200 to 02  
E: [myanmar@kpmg.com](mailto:myanmar@kpmg.com)



Twitter: @KPMG\_MM  
Facebook: [facebook.com/KPMGinMyanmar](https://facebook.com/KPMGinMyanmar)  
LinkedIn: [linkedin.com/company/kpmg-myanmar](https://linkedin.com/company/kpmg-myanmar)  
Instagram: [instagram.com/kpmgmyanmar](https://instagram.com/kpmgmyanmar)



**[home.kpmg/mm](https://home.kpmg/mm)**

The information contained herein is of a general nature and is not intended to address the circumstances of any particular individual or entity. Although we endeavor to provide accurate and timely information, there can be no guarantee that such information is accurate as of the date it is received or that it will continue to be accurate in the future. No one should act on such information without appropriate professional advice after a thorough examination of the particular situation.

© 2017 KPMG Advisory (Myanmar) Ltd., a Myanmar limited liability company and a member firm of the KPMG network of independent member firms affiliated with KPMG International Cooperative (“KPMG International”), a Swiss entity.

The KPMG name and logo are registered trademarks of KPMG International.