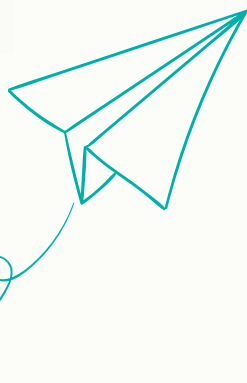




KPMG Myanmar Trainee Program 2018



KPMG Myanmar Trainee Program



South-East Asia is changing rapidly. The countries of ASEAN are experiencing rapid growth, and the new breed of accounting, advisory and tax professionals need to be conversant and comfortable with working across cultures and borders.

.....

Process

Process	Period
Application	15 th to 31 st Jan 2018
Assessment/ Interview	1 st to 9 th Feb 2018
Trainee award	19 th Feb 2018

KPMG has always believed in investing in people at an early stage of their professional development. KPMG Myanmar trainees will have early exposure through a structured program as part of their award.

Targeted students

- Currently studying CPA (MM) or ACCA having already completed ACCA F1 to F3.
- Strong interest to pursue career in Consulting
- Good academic results
- Good command of English
- Possessing global mindset
- Strong interpersonal skills
- Committed to the KPMG Values

Program benefits

- One year trainee program
- Mentorship by KPMG management
- Monthly financial support
- Study leave, exam leave, annual leave
- Involvement in firm projects and activities
- Opportunity for permanent employment after trainee period is completed

Frequently Asked Questions for KPMG Myanmar Trainees (FAQs)

1) What is KPMG Myanmar trainee program about?

South-East Asia is changing rapidly. The countries of ASEAN are experiencing rapid growth, and the new breed of accounting, advisory and tax professionals need to be conversant and comfortable with working across cultures and borders.

KPMG has always believed in investing in people at an early stage of their professional development. KPMG Myanmar trainees will have early professional level exposure through a structured programme as part of their award.

2) Who are the targeted students?

We want our trainees to go through a robust training plan during their trainee period with us. Hence, the targeted students are current ACCA and CPA students who wish to pursue a career in KPMG and complete their ACCA or CPA.

3) What are the qualities you are looking for in the trainees?

Our trainees are those with a strong focus to make their mark in a professional services firm.

The successful trainees will have good academic results and be actively pursuing ACCA or CPA. We are also looking at candidates who display strong leadership with excellent interpersonal skills and have a regional mindset.

4) What will I receive if I am given the trainee award?

We will provide financial support for one year.

We will also ensure you receive strong support by way of constant coaching and mentoring from experienced managers and partners during the entire duration of your studies and when you commence your employment with us. We will mentor you closely and help you plan your path to achieve your personal and professional goals and aspirations.

5) Is there a penalty if I withdraw from the program?

No, however 14 days notice is required if you choose to withdraw.

6) Where will I be working after completion?

If your trainee period is successful you will be offered a permanent Associate position at KPMG Myanmar.

7) What will my career path be like as a trainee in KPMG?

You can look forward to career advancement in the firm. At every step of the way, we will provide the necessary learning and guidance through structured learning and milestone programmes, excellent industry exposure and mentoring to ensure that you obtain the maximum benefits of our trainee programme.

8) How can I apply for the trainee and what is the application process like?

Apply with CV and cover note to tmccrum@kpmg.co.th

Process	Period
Application	15 th to 31 st Jan 2018
Shortlisting and interview process	1 st to 9 th Feb 2018
Confirmation of trainee	15 th Feb 2018

Shortlisted candidates will be invited for a face to face interview at the local office and go through an assessment process.





kpmg.com/mm

STAY CONNECTED >>>



Twitter: @KPMG_MM

Facebook: facebook.com/KPMGinMyanmar

The information contained herein is of a general nature and is not intended to address the circumstances of any particular individual or entity. Although we endeavor to provide accurate and timely information, there can be no guarantee that such information is accurate as of the date it is received or that it will continue to be accurate in the future. No one should act on such information without appropriate professional advice after a thorough examination of the particular situation.

© 2018 KPMG Advisory (Myanmar) Ltd., a Myanmar limited liability company and a member firm of the KPMG network of independent member firms affiliated with KPMG International Cooperative ("KPMG International"), a Swiss entity.

The KPMG name and logo are registered trademarks of KPMG International.