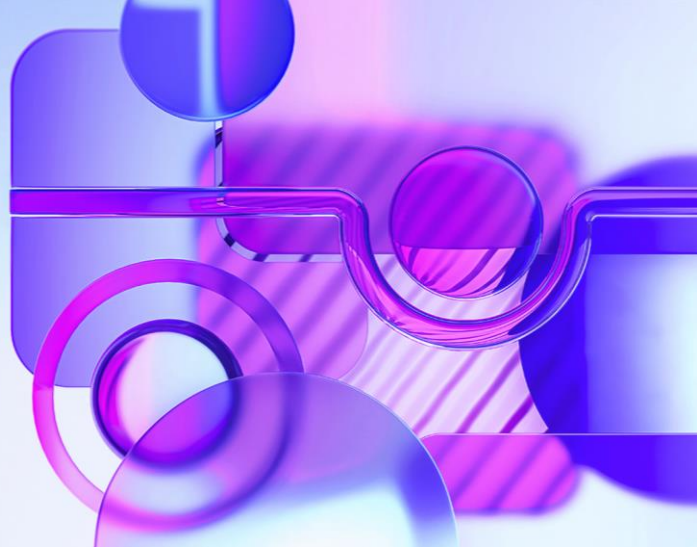


# International and domestic tax

[kpmg.com.my/internationaltax](https://kpmg.com.my/internationaltax)

KPMG in Malaysia



We bring together a team of experienced professionals dedicated to advising clients who are undertaking a variety of domestic and international transactions as part of corporate exercises that often have tax ramifications.

We leverage on the global KPMG network to access specialized expertise and experience in cross-border transactions to help clients manage the complexities of multiple tax systems and supranational regulation. Our clients can enjoy the convenience of dealing with the Malaysia team as a central point of contact for large international exercises.

## Our scope of services:



### Inbound and Outbound Investments, and International Tax Advice

Clients seeking business opportunities in overseas markets need to consider many aspects of their investment, such as corporate structuring, repatriation of profits to Malaysia, taxability of foreign source income, to name a few. We advise clients on potential tax implications to consider when undertaking various cross border transactions. Foreign taxes can be very different from Malaysian taxes and part of our services is to assist clients in asking the right questions.

We are also able to advise foreign clients looking to invest in Malaysia on the Malaysian tax system, repatriation considerations, incentives, entry and exit strategies, etc.



### Mergers and Acquisitions

Our advice encompasses tax issues relevant to clients undertaking merger and acquisition exercises so that they become aware not only of transaction tax costs, but can also obtain a clearer tax perspective of their new corporate structure and how this could integrate with the existing structure. We provide both buy and sell-side assistance.



### Liaison with Authorities

We could assist in liaising with regulatory authorities on new tax developments and contentious tax issues.



### Tax Due Diligence

We are involved in providing tax due diligence services, not only for local transactions, but also in liaising with KPMG offices overseas to provide advice on cross border or international transactions. In conjunction with due diligence work, we advise on structuring the investment and review of transaction documents.



### Tax Diagnostic Review

Our assistance includes assisting clients to review their business operations and structure to facilitate tax efficiency. We also provide implementation support to assist clients in the transition to the new structure or operating model.



### Tax Incentives

We could assist clients in applying for tax incentives (including customized tax incentive packages). Our assistance includes feasibility evaluation and engaging with the relevant authorities to obtain their feedback in respect of the incentive application prior to the formal application.



### Ad Hoc Advice

We also provide tax advisory services of a general nature relating to various income tax matters such as tax deductibility of expenses, taxation of income, withholding tax, real property gains tax, capital gains tax, stamp duty and etc.

# Contact Us

For more information on our core service offerings, please contact:

## Soh Lian Seng

Executive Director – Head of Tax  
Phone: +60 (3) 7721 7019 / 012-630 1903  
Email: [lsoh@kpmg.com.my](mailto:lsoh@kpmg.com.my)

## Tai Lai Kok

Executive Director  
Phone: +60 (3) 7721 7020 / 016-718 3533  
Email: [ltai1@kpmg.com.my](mailto:ltai1@kpmg.com.my)

## Ong Guan Heng

Executive Director  
Phone: +60 (3) 7721 7027 / 012-297 1805  
Email: [guanhengong@kpmg.com.my](mailto:guanhengong@kpmg.com.my)

## Northern Region (Penang Office)

### Evelyn Lee

Executive Director  
Phone: +60 (4) 2382 288 / 017-473 2185  
Email: [evewflee@kpmg.com.my](mailto:evewflee@kpmg.com.my)

## Northern Region (Ipoh Office)

### Neoh Beng Guan

Executive Director  
Phone: +60 (3) 7721 7025 / 012-313 8230  
Email: [bneoh@kpmg.com.my](mailto:bneoh@kpmg.com.my)

## Crystal Chuah

Associate Director  
Phone: +60 (5) 253 1188 / 016-505 9448  
Email: [ycchuah@kpmg.com.my](mailto:ycchuah@kpmg.com.my)

## Southern Region (Johor Office)

### Ng Fie Lih

Executive Director  
Phone: +60 (7) 266 2213 / 016-223 8521  
Email: [flng@kpmg.com.my](mailto:flng@kpmg.com.my)

## Neoh Beng Guan

Executive Director  
Phone: +60 (3) 7721 7025 / 012-313 8230  
Email: [bneoh@kpmg.com.my](mailto:bneoh@kpmg.com.my)

## Lim Wai Yin

Executive Director  
Phone: 7721 7202 / 012-325 2737  
Email: [wylim@kpmg.com.my](mailto:wylim@kpmg.com.my)

## Steven Solomon

Executive Director  
Phone: +60 (3) 7721 3778 / 018-207 5799  
Email: [stevensolomon2@kpmg.com.my](mailto:stevensolomon2@kpmg.com.my)

## Sarawak Region (Kuching & Miri Office)

### Regina Lau

Executive Director  
Phone: +60 (82) 268 308 / 011-1078 0383  
Email: [reglau@kpmg.com.my](mailto:reglau@kpmg.com.my)

## Sabah Region (Kota Kinabalu Office)

### Titus Tseu

Executive Director  
Phone: +60 (88) 363 020 / 012-833 3298  
Email: [titustseu@kpmg.com.my](mailto:titustseu@kpmg.com.my)

## KPMG Tax Services Sdn Bhd

Level 10, KPMG Tower  
8, First Avenue, Bandar Utama  
47800 Petaling Jaya, Selangor

Phone: +60 (3) 7721 3388  
Fax: +60 (3) 7721 7288 / 7388

Some or all of the services described herein may not be permissible for KPMG audit clients and their affiliates or related entities.



[kpmg.com.my/internationaltax](https://kpmg.com.my/internationaltax)

© 2024 KPMG Tax Services Sdn. Bhd., a company incorporated under Malaysian law and a member firm of the KPMG global organization of independent member firms affiliated with KPMG International Limited, a private English company limited by guarantee. All rights reserved.

The information contained herein is of a general nature and is not intended to address the circumstances of any particular individual or entity. Although we endeavor to provide accurate and timely information, there can be no guarantee that such information is accurate as of the date it is received or that it will continue to be accurate in the future. No one should act on such information without appropriate professional advice after a thorough examination of the particular situation.

The KPMG name and logo are trademarks used under license by the independent member firms of the KPMG global organization.