



# ESG Platform Solutions

Your gateway to streamlined  
ESG reporting



KPMG in Malaysia

---

[kpmg.com.my/esg](https://kpmg.com.my/esg)

# Leverage on KPMG's ESG expertise and tools

Our comprehensive suite of tools are designed to meet your organization's needs in ESG reporting.



## Corporate Sustainability Reporting Directive (CSRD) Data Collection and Quality Monitoring

Bring data from a variety of sources together and automatically identify incomplete, incorrect or duplicate data through real-time monitoring.

- Collect data from multiple sources
- Expand data collection
- Improve data quality



## Double Materiality & Data Readiness

KPMG's ESG maturity assessment supports you in conducting Double Materiality and Data Readiness assessments effortlessly.

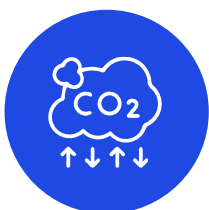
- Holistic ESG assessment
- Strategic alignment for sustainability
- Transparency and accountability



## ESG Policy Compliance

Easily manage your organization's policies and procedures in a coordinated and centralized manner.

- Real-time compliance reporting
- Integrated policy management
- See control effectiveness



## Carbon Calculator

Easily monitor and report on Environmental, Social and Governance performance.

- Automate tasks
- Scenario Analysis
- Transparent and uniform reporting

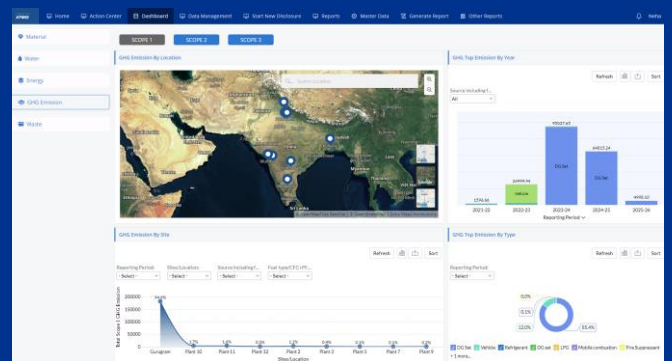
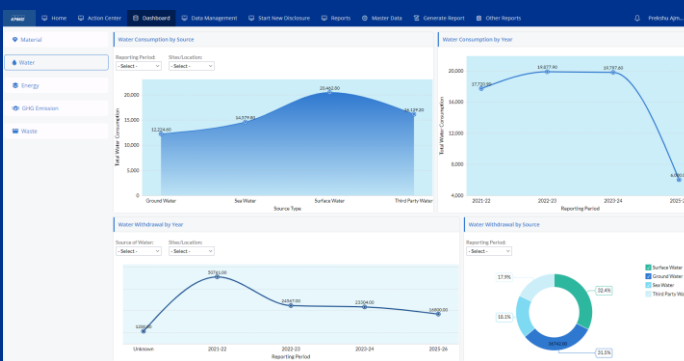
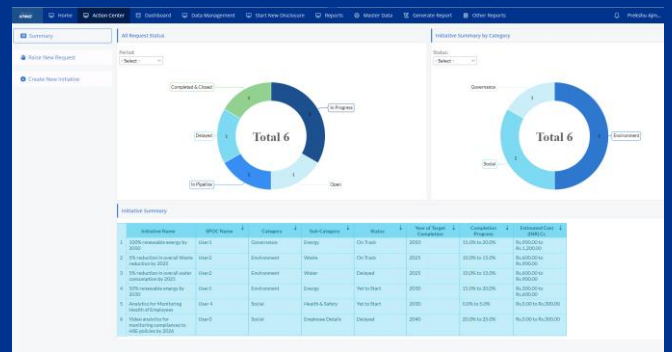
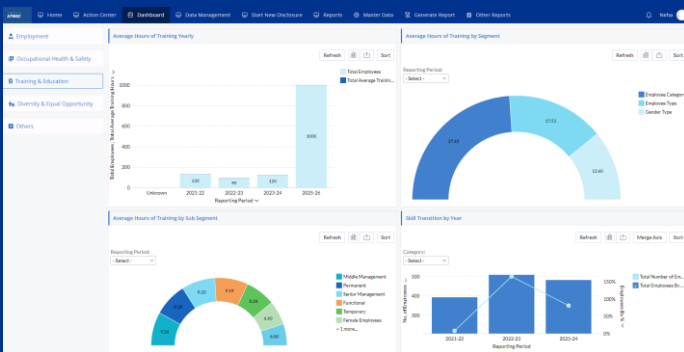
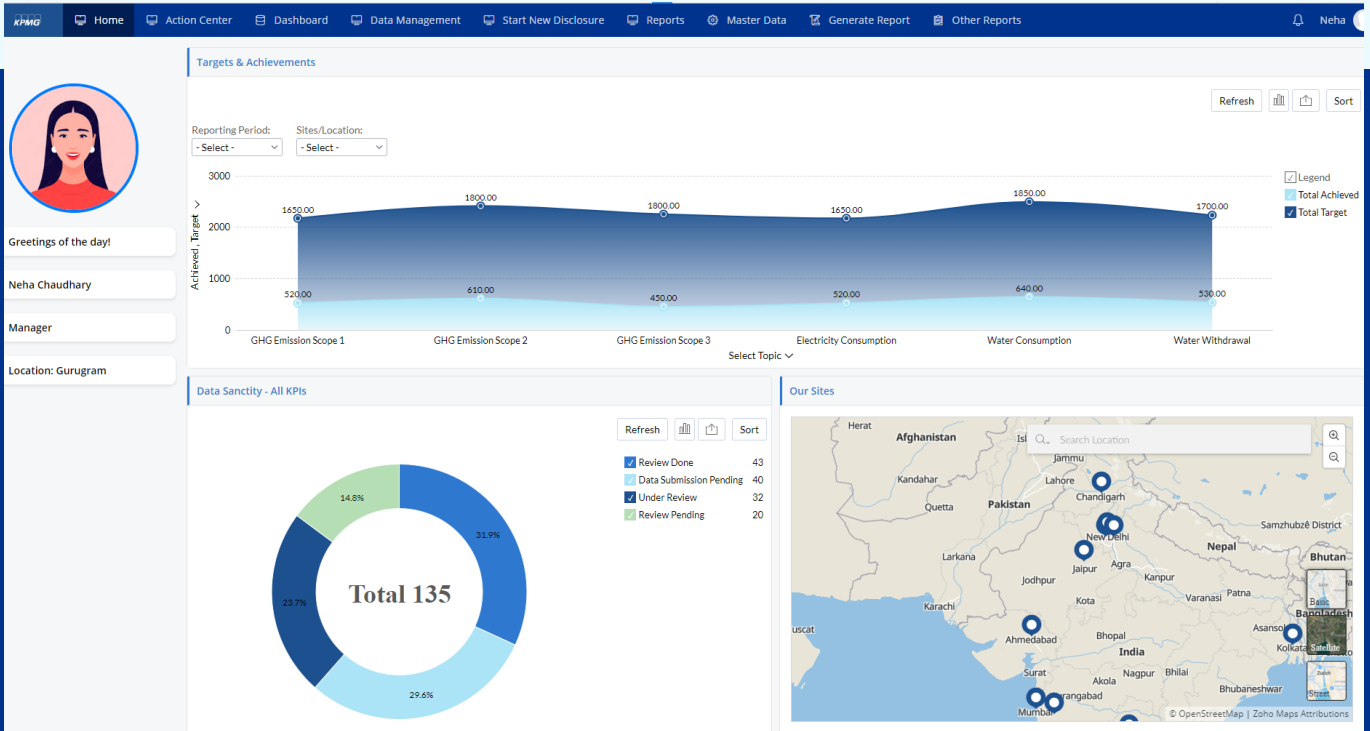
# ESG reporting tools in the spotlight

Can be utilized collectively or as stand-alone modules. Reach out to KPMG's ESG specialists for bespoke guidance.

# 1

## ESG Command Center: A unified platform

This tool provides enterprise-wide governance related to ESG programs and initiatives and leverages sustainability reporting framework to help organizations report their economic, environmental, social, and governance performance.



## Capabilities



### Create ESG data conduit

Consolidate your ESG data in a single platform from multiple sources



### Manage your vendors

Consolidate data, evaluate performance and ensure compliance to ESG KPIs for your vendors



### Monitor emissions

Monitor your environmental footprint with ease by keeping track of the different types of emissions



### KPI monitoring

ESG Tool for overviewing of performance metrics relevant for the sector/industry. It collects, organize and visualize KPIs important for the company's growth.



### Report whenever you want

Report in any standard of your choice, whenever your want in the standard reporting templates



### ESG AI bot

Chat with the bot to generate trends, benchmark with peers and understand your performance



### Monitor data sanctity

Ensure data accuracy and transparency with the ESG Command Center

## Value generated



### Resource optimization

Automated workflows and centralized data management free up valuable resources



### Enhanced credibility

Ensure data accuracy to boost your trust and reputation



### Risk mitigation

Minimize risk associated with compliance and inaccurate reporting



### Improved decision-making

Data-driven insights optimize ESG performance

## KPMG's approach

You may be facing ESG data management challenges, such as:

- Inaccurate data
- Lack of standardization and uniformity
- Data in silos
- Limited visibility

Alignment is critical between sustainability experts, technology specialists and your operational teams to ensure a holistic reporting lifecycle capability is enabled.

KPMG provides comprehensive support from strategic alignment to solution implementation:

### Sustainability Advisory

### ESG reporting tools

Reporting Scope and Boundaries

Double Materiality Assessment

Data and Operational readiness assessment

Re-visit sustainability goals and strategy

Design Future State & Initiatives

Collect Data and Implement Systems

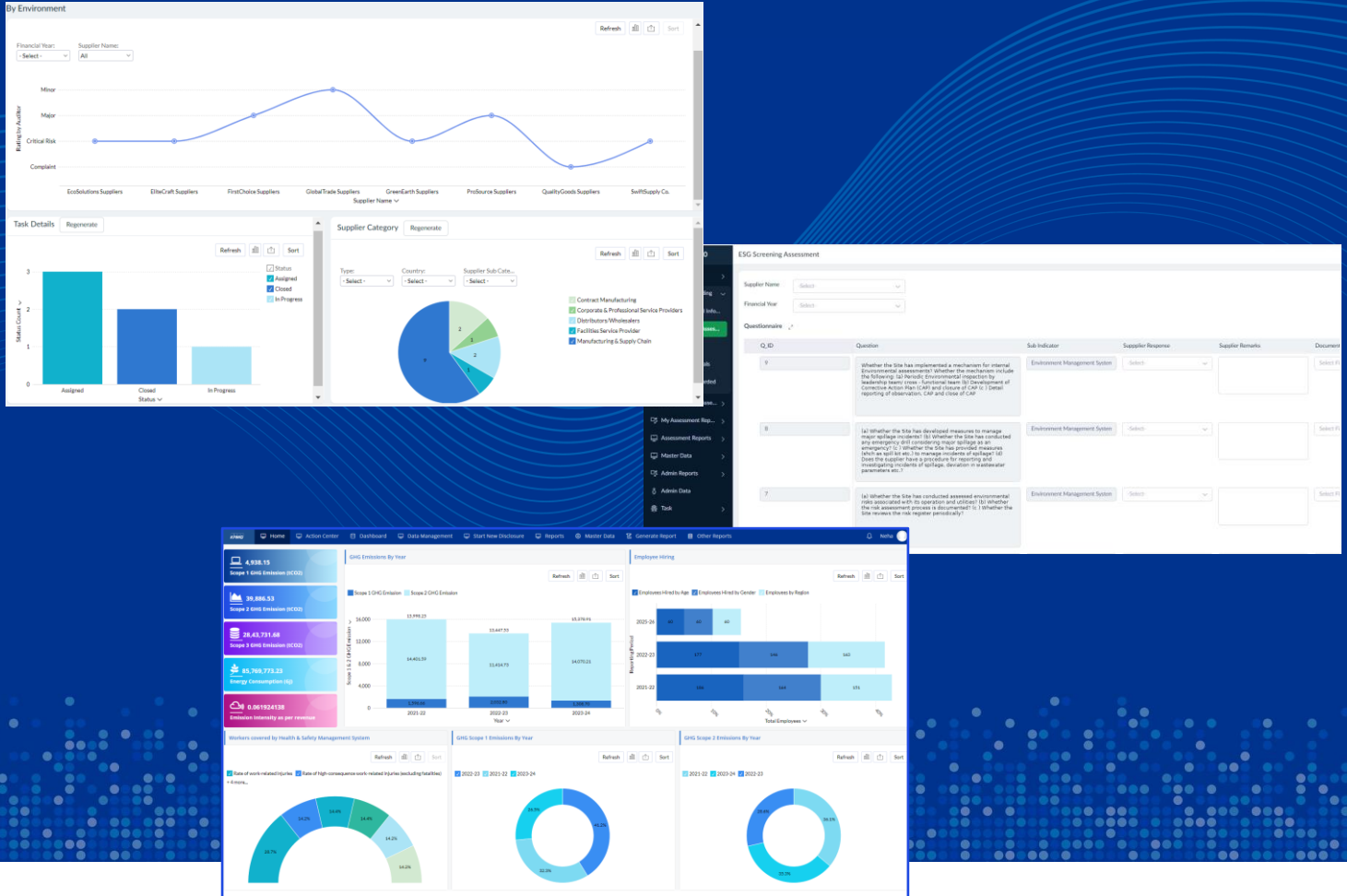
Reporting

Assurance

# 2

# SustChain: Vendor data consolidation, evaluation and compliance

KPMG works closely with the client to curate customized on-line digital platform to conduct supplier's ESG assessment. The platform is highly customizable to client's requirements and compatible to existing IT systems.



## Capabilities

**Robust questionnaire**

Customizable questionnaire on Environment, Labor Rights, Climate Change, Governance etc.

Coverage: Regulatory Compliance, Sector Risk, International Standards & Guidelines, Good Industry Practices

Dedicated access to Suppliers, Assessors and Client through unique Log in and Password.

**Customizable**

Customizable to Client's requirement; Compatible to Client's System.

User-friendly interface, Capability to collect ESG-specific data.

Supplier Specific Report indicating Risk Profile (High-Medium-Low)

**Insights**

Capability to conduct ESG Screening - pre-onboarding stage and on-boarded suppliers.

Real-time progress tracking and insights, Supplier ESG data, web-crawling feature to pull data from public domain.

Dashboard, Analytics, Corrective & Preventive Action (CAPA) tracking

## Value generated



### Platform Design and Usability:

One unified platform with real-time dashboard capabilities for managing and monitoring multiple suppliers.



### Assessment Content and Methodology:

Customized Supplier's Sustainability Risk assessment questionnaire that aligns with sector-specific ESG material topics, regulatory requirements, and best practices.



### Performance Evaluation and Tracking:

An evaluative tool for assessing and tracking suppliers' ESG performance, including clear risk level identification and summarization of observations.



### Gap Analysis and Actionable Insights:

In-depth analysis of suppliers' ESG gaps coupled with actionable recommendations for improvement.



### Support and Continuous Improvement:

Ongoing post-assessment support and follow-up for continual supplier ESG performance enhancement.

## KPMG's approach

1

Consolidate data for all your vendors in a single repository

2

Identify and map ESG risks within your supply chain

3

Actively track the ESG risks of your suppliers to streamline your ESG processes

4

Strengthen your ESG goals

# 3

## ESG AI Bot: ChatGPT for ESG

KPMG's ESG AI Bot is a low code platform which imparts capability to create multiple Generative AI-based applications for business use cases with great ease and speed.

### What does it do?

Leverage Generative AI to perform comparative analysis across different companies and years based on environmental, social, and governance (ESG) metrics, emission data, and other key performance indicators (KPIs).

### How does it work?

It is based on structured data such as excel file containing key KPIs such as emissions, gross wages paid, ESG governance, material sourcing from MSME suppliers, etc. or unstructured data as PDF, text, etc.

#### Predictive AI

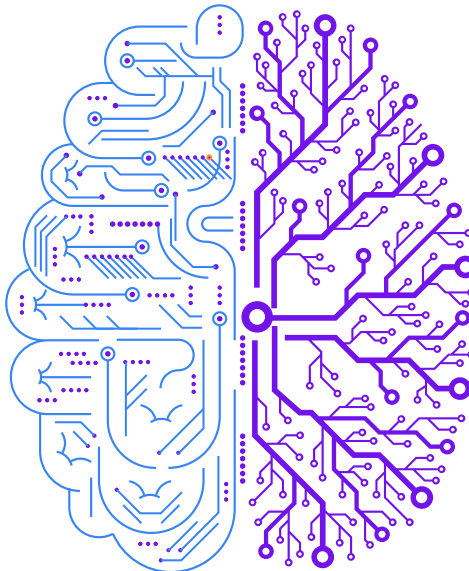
Logic

Probabilities

Patterns

Predictions

Algorithms that can study patterns, categories, assign probabilities and support decision-making



#### Generative AI

Creativity

Generativity

Algorithms that can create content like text and images of humanlike quality in response to prompts or requests for synthesis

Hacking knowledge of the world and yours through interrogation

### Value generated

#### For companies

Suggest actionable steps for companies to improve ESG compliance, reduce emissions, and enhance material sourcing strategies.

#### For investors

Provide insights on which companies are leading in sustainability practices, helping investors make informed decisions.

#### For regulators

Highlight areas where companies need to improve compliance with environmental regulations.

# Industry-wide application

KPMG's focus on industry and sector-specific knowledge helps us deliver real results for our clients. We have applied our ESG expertise and tools across multiple sectors.



Metal & Mining



Private Equity



Banking



Chemicals & Pharmaceuticals



Cement



Technology



Oil & Gas



FMCG

Our suite of services are designed to provide you with comprehensive support at every stage of your ESG journey.

## Advisory

**Sustainability Advisory**  
Climate Change and  
Sustainability Services

**Social Advisory**  
Services

**Technology Consulting**  
ESG Reporting  
platforms

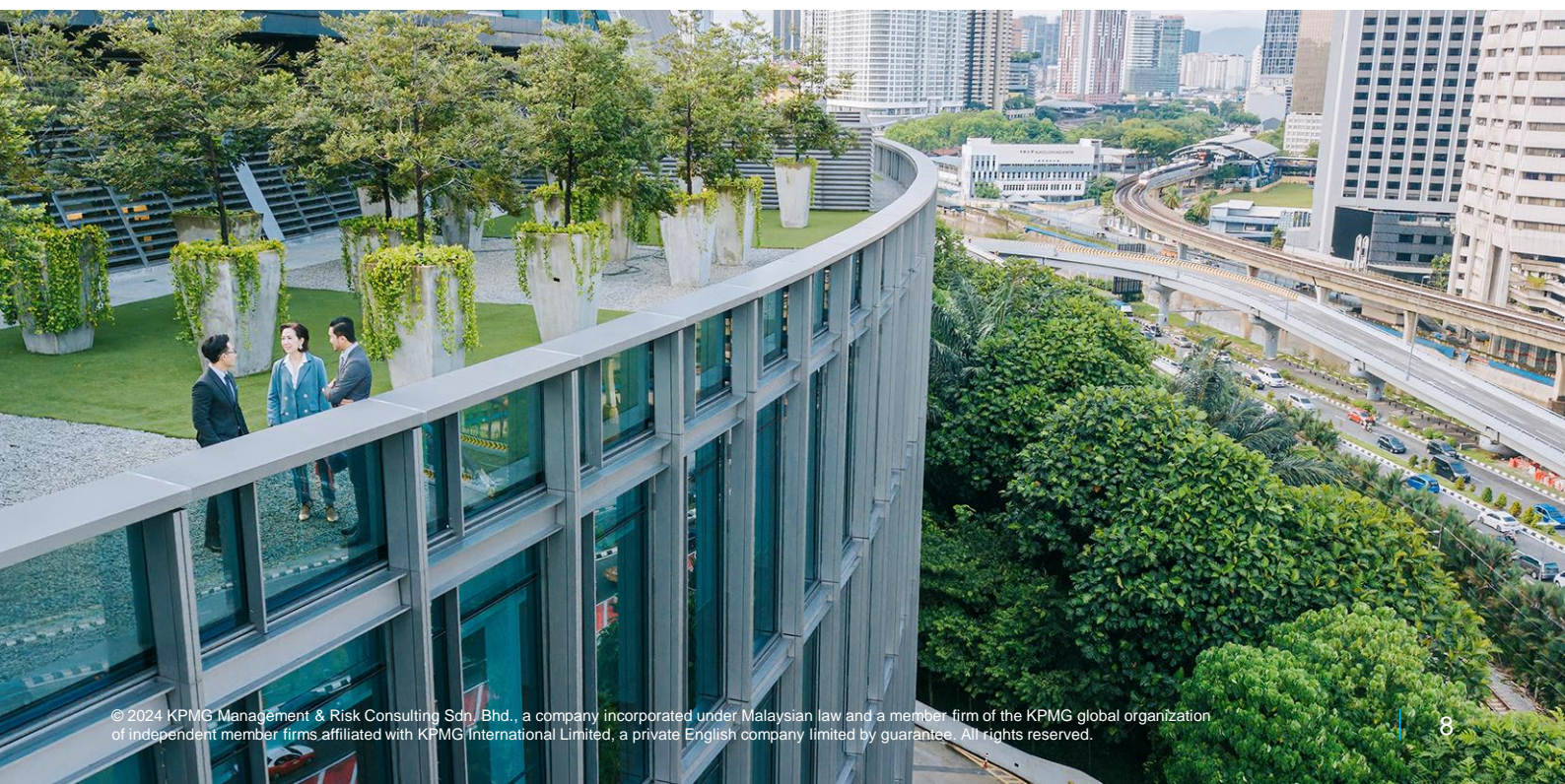
**Technology Consulting**  
Cyber Security

## Audit

**ESG Assurance**  
Helping to drive insights that has an  
impact.

## Tax

**ESG in Tax**  
Helping you on your tax and regulatory  
ESG journey.





# Connect with KPMG



## Alvin Gan

Partner, Head of Management  
Consulting and Technology Consulting  
KPMG in Malaysia

T: +603 7721 7090

E: [alvingan@kpmg.com.my](mailto:alvingan@kpmg.com.my)



## Phang Oy Cheng

Partner, Head of Sustainability  
Advisory  
KPMG in Malaysia

T: +603 7721 7771

E: [oychengphang@kpmg.com.my](mailto:oychengphang@kpmg.com.my)

Some or all of the services described herein may not be permissible for KPMG audit clients and their affiliates or related entities.



[kpmg.com.my/esg](https://kpmg.com.my/esg)

The information contained herein is of a general nature and is not intended to address the circumstances of any particular individual or entity. Although we endeavor to provide accurate and timely information, there can be no guarantee that such information is accurate as of the date it is received or that it will continue to be accurate in the future. No one should act on such information without appropriate professional advice after a thorough examination of the particular situation.

© 2024 KPMG Management & Risk Consulting Sdn. Bhd., a company incorporated under Malaysian law and a member firm of the KPMG global organization of independent member firms affiliated with KPMG International Limited, a private English company limited by guarantee. All rights reserved.

The KPMG name and logo are trademarks used under license by the independent member firms of the KPMG global organization.