



Invest
JOHOR
ADVANCED ECONOMY STATE

JOHOR

Unlocking Potential, A Gateway To the World



ADNY JAFFEDON BIN AHMAD

Advisor – Investment

ORGANIZATION

INVEST JOHOR

ISKANDAR REGIONAL
DEVELOPMENT AUTHORITY
(IRDA)

EMAIL:

adny@investjohor.gov.my

adny@irda.com.my

Short Biography

Adny Jaffedon Bin Ahmad, Advisor – Investment with Invest Johor and concurrently holding a position as Senior Vice President at Iskandar Regional Development Authority (IRDA). A key member of Invest Johor and IRDA responsible for the planning, promotion, and facilitation of investments into Johor and Iskandar Malaysia.

He has played a key role in Invest Johor, IRDA and previous organizations to develop strategies and project implementation in the space of domestic and international businesses.

Graduated from Drexel University, Philadelphia USA in the field of Business Administration (Finance) and currently pursuing various online courses to further enhance his knowledge and keep up with the latest trend. Accomplished corporate professional with more than 28 years' experience in various corporate and public sectors including Economic, Investment, Business Development, Marketing and Corporate Planning. He had the opportunity to serve in various challenging industry namely Aviation, Automotive, Financial and Logistics.

Overview of Johor

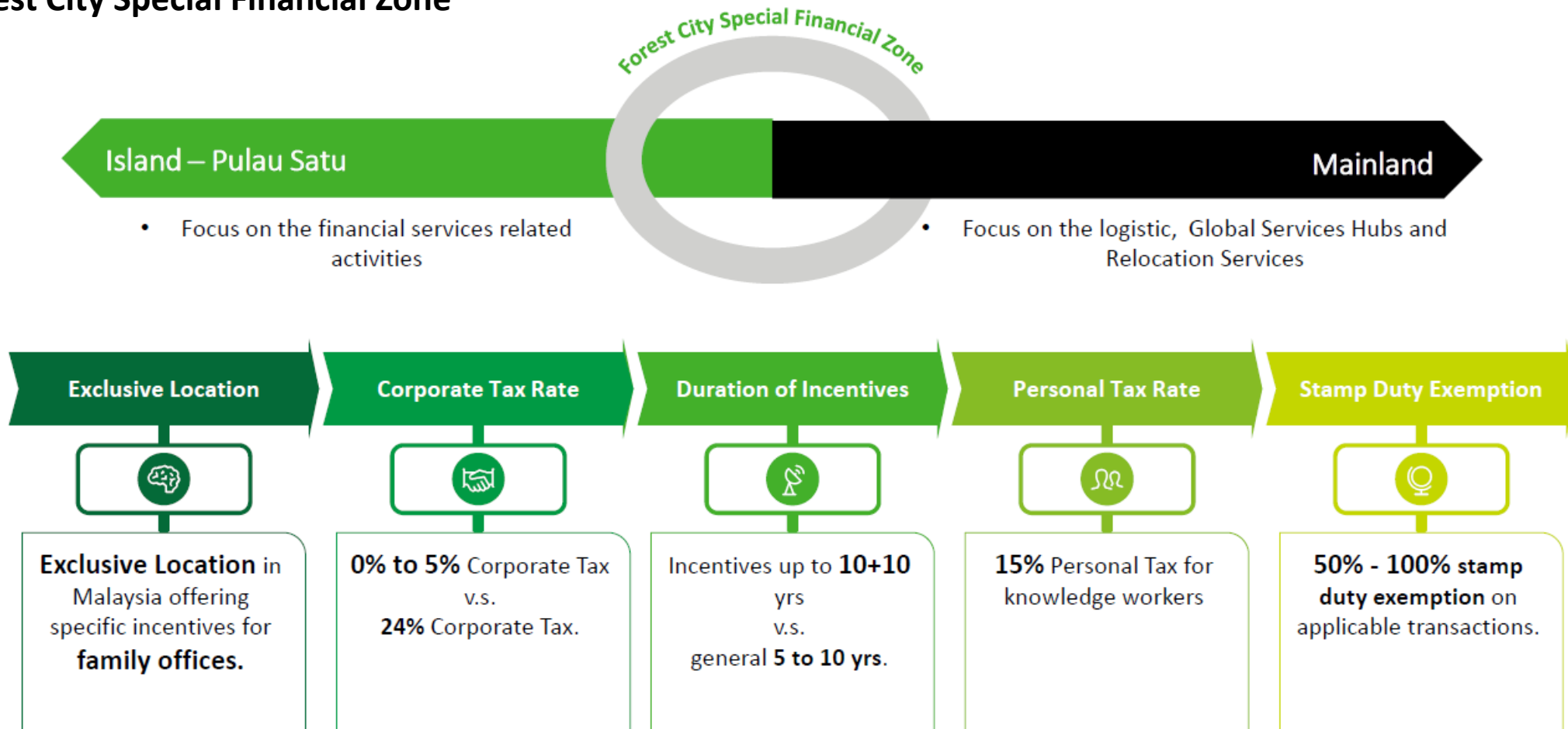


 Area 19,210 sq km	 No. of Local Authority 16 Local Authorities	 Workforce 1.841 million
 No. of District 10 Districts	 Population 3.77 million	 GDP RM 148.2 billion (6.5% - 7.1%)

Forest City – Special Financial Zone



Overview of Tax Incentive Package Granted to Forest City Special Financial Zone














What Is JS-SEZ

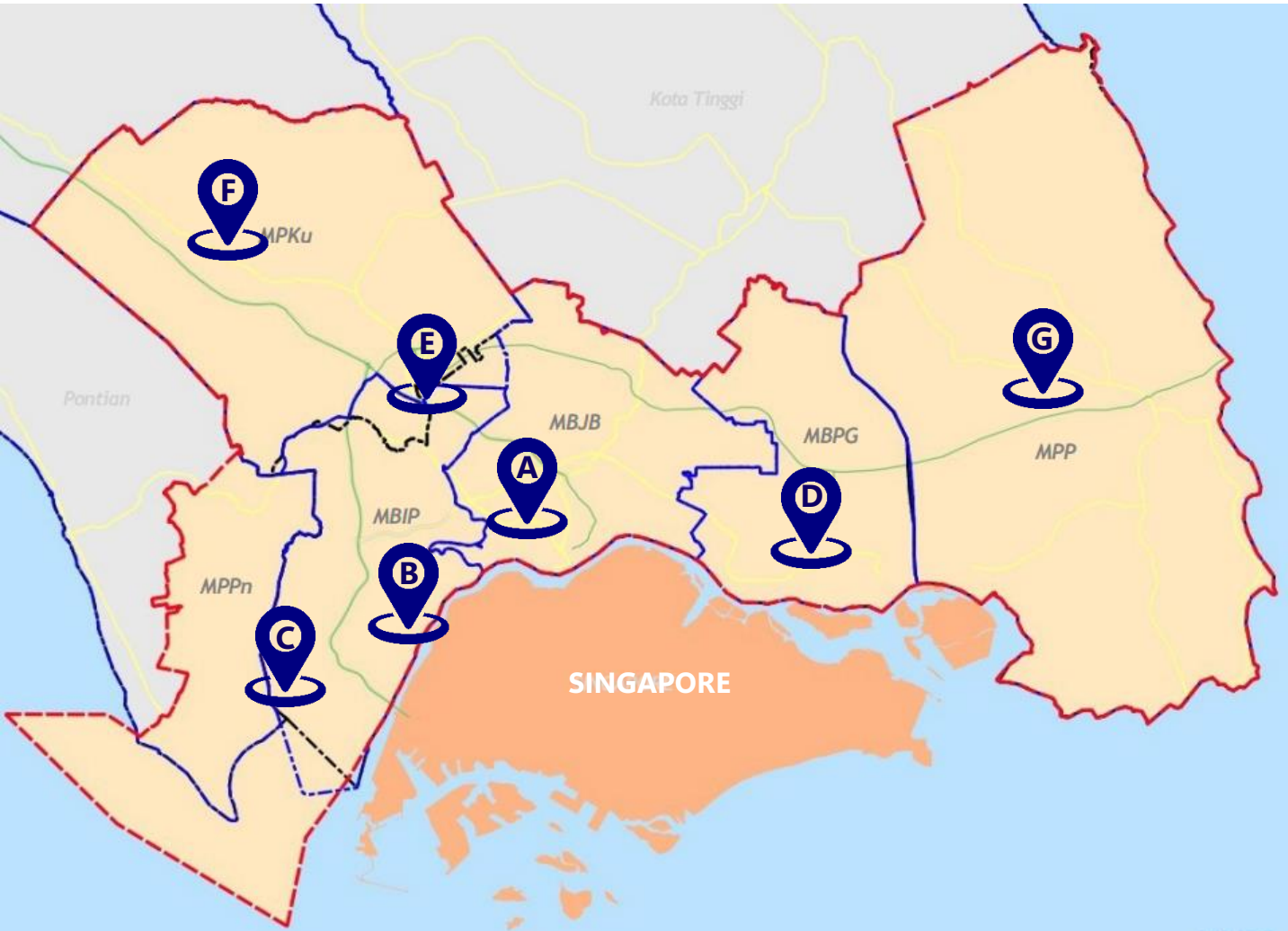
The formation of the JS-SEZ adjacent to the Singaporean border is to foster stronger business connections and improve connectivity between the two countries, towards attracting investments into the region.

- ### Why do we need focused sectors at JS-SEZ?
- 1 **Align with national strategies** and regional goals.
 - 2 **Co-create investment opportunities** for high-end and high-value sectors.
 - 3 **Foster synergies and collaboration** among investors in the area.
 - 4 **Efficiently allocate resources**, including infrastructure, tailored to industry needs.
 - 5 **Foster innovation and competitiveness** through the creation of specialized ecosystem.

Proposed Key Economic Sectors for JS-SEZ

 Logistics	 Financial Services
 Business Services	 Tourism
 Food Security	 Education
 Healthcare	 Digital Economy
 Energy	 Manufacturing

Johor-Singapore Special Economic Zone (JS-SEZ)



A Johor Bahru City Center

- Financial Service
- Hospitality & Medical
- Commerce & Business
- Halal Products & Food Industry
- Arts & Culture Hub
- General Manufacturing

B Iskandar Puteri

- Biotech Manufacturing
- Government Administration
- Tourism & Entertainment
- Institution & Research
- High-End Property Development

C Tanjung Pelepas – Tanjung Bin

- Power Generation & Engineering
- Warehouse & Logistic
- Hi-Tech Manufacturing Industry
- Port & Marine Service

D Pasir Gudang – Tanjung Langsat

- Plastic Manufacturing
- Palm Oil Refining & Processing
- Petrochemical & Oleochemical
- Manufacturing
- Heavy Industry

E Skudai - Senai

- Power Generation & Engineering
- Warehouse & Logistic
- Hi-Tech Manufacturing Industry
- Port & Marine Service

F Ibrahim Technopolis








G Kota Tinggi - Pengerang



JS-SEZ | Sharing of Current Initiatives Underway



Significant efforts have been outlined to enhance connectivity and financial infrastructure, key to establishing a robust foundation for the JS SEZ

	RTS Link	QR Code Clearance	IMFC – Johor	Forest City SFZ	Talent Development Council
INITIATIVES					
COMPLETION DATE (Estimated)	Q1 2027	Q4 2024	Q4 2024	Q4 2024	Q4 2024
DIFFERENTIATING FACTOR	Complemented by the local public transportation network in Johor Bahru and various locations	Target to reduce immigration clearance time by up to 75%	First outside of Kuala Lumpur and with participation from state government agencies	Regional financial hub complementing Singapore, focusing on middle and back-office and digital solutions	Dedicated body on talent development programs in JS-SEZ, serving as a bridge between industry and academia

Why Johor



Good Governance



Political Stability



**Investor Friendly
Policy**



Talent Availability



**Attractive
Incentives**



Cost-Competitive



**Extensive
Connectivity**



**Attractive Facility
& Reliable Utility**



Strategic Location



**Fast Track
Approval**

JOHOR SUPER LANE

Definition

Johor Super Lane (JSL) is an accelerated development process that swiftly progresses from pre-approval of plans to building completion on-site, and subsequently to operating authorization, through a combination of plan approval, on-site construction, CCC (Certificate of Completion and Compliance), and operational licensing processes.



- i. INTERNAL AND EXTERNAL TECHNICAL AGENCIES
- ii. PRINCIPLE SUBMITTING PERSON (PSP)
- iii. OWNER / OPERATOR

Together in planning the development project to be carried out.

Involvement

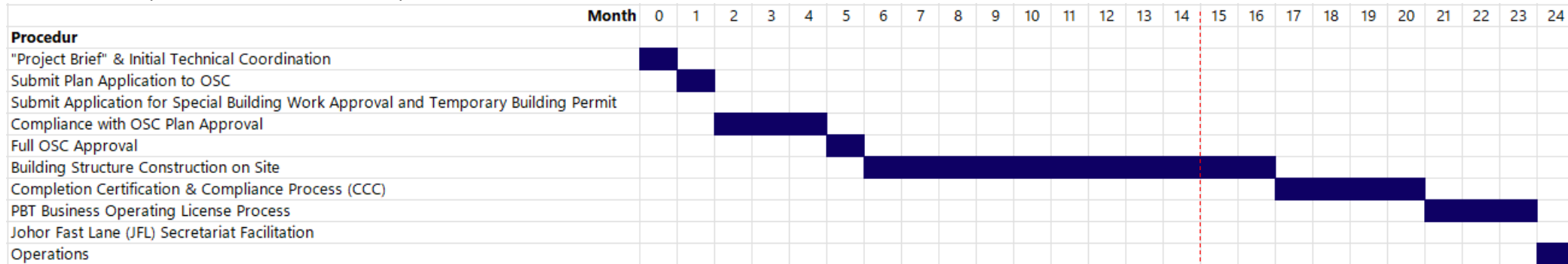


Johor Super Lane | Implementation

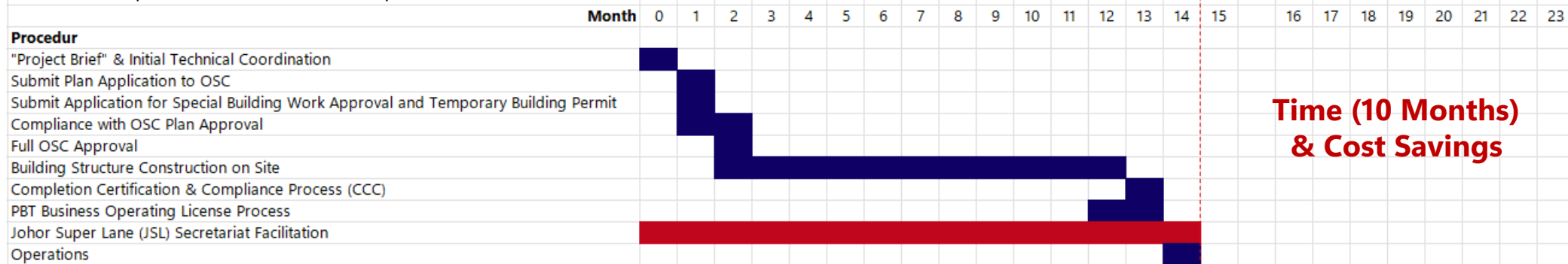


Comparison of Johor Super Lane Implementation

BEFORE the implementation of the Johor Super Lane initiative



AFTER the implementation of the Johor Super Lane initiative



**Time (10 Months)
& Cost Savings**



Well Established Multimodal Linkages



Major highways

- North South Expressway
- Senai Desaru Expressway
- Malaysia-Singapore Causeway Link & Malaysia-Singapore Second Link



Seaports

- Port of Tg. Pelepas
- Johor Port
- Tanjung Langsat Port



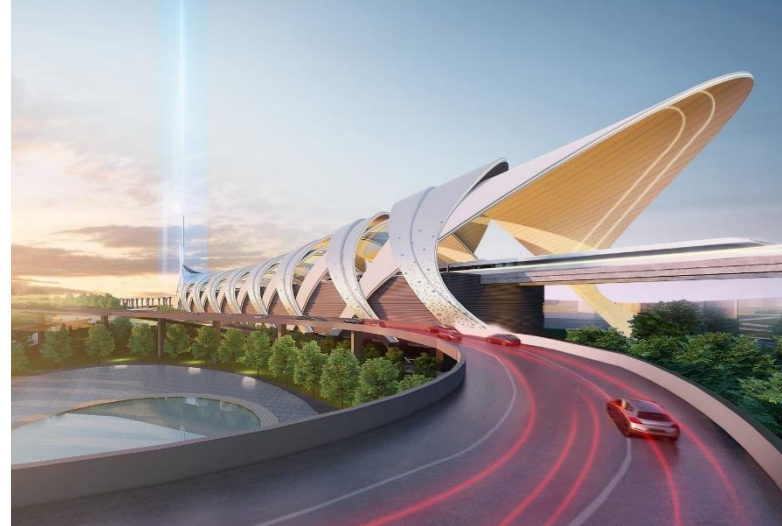
International Airports

- Senai International Airport
- Kuala Lumpur International Airport
- Singapore Changi Airport



Rail Network

- KL-Singapore High Speed Rail
- Gemas – Johor Bahru Electrified Double Track (EDT)
- Johor Bahru–Singapore Rapid Transit System (RTS)





Thank You



Scan for E-Brochures



Scan To Reach Us