



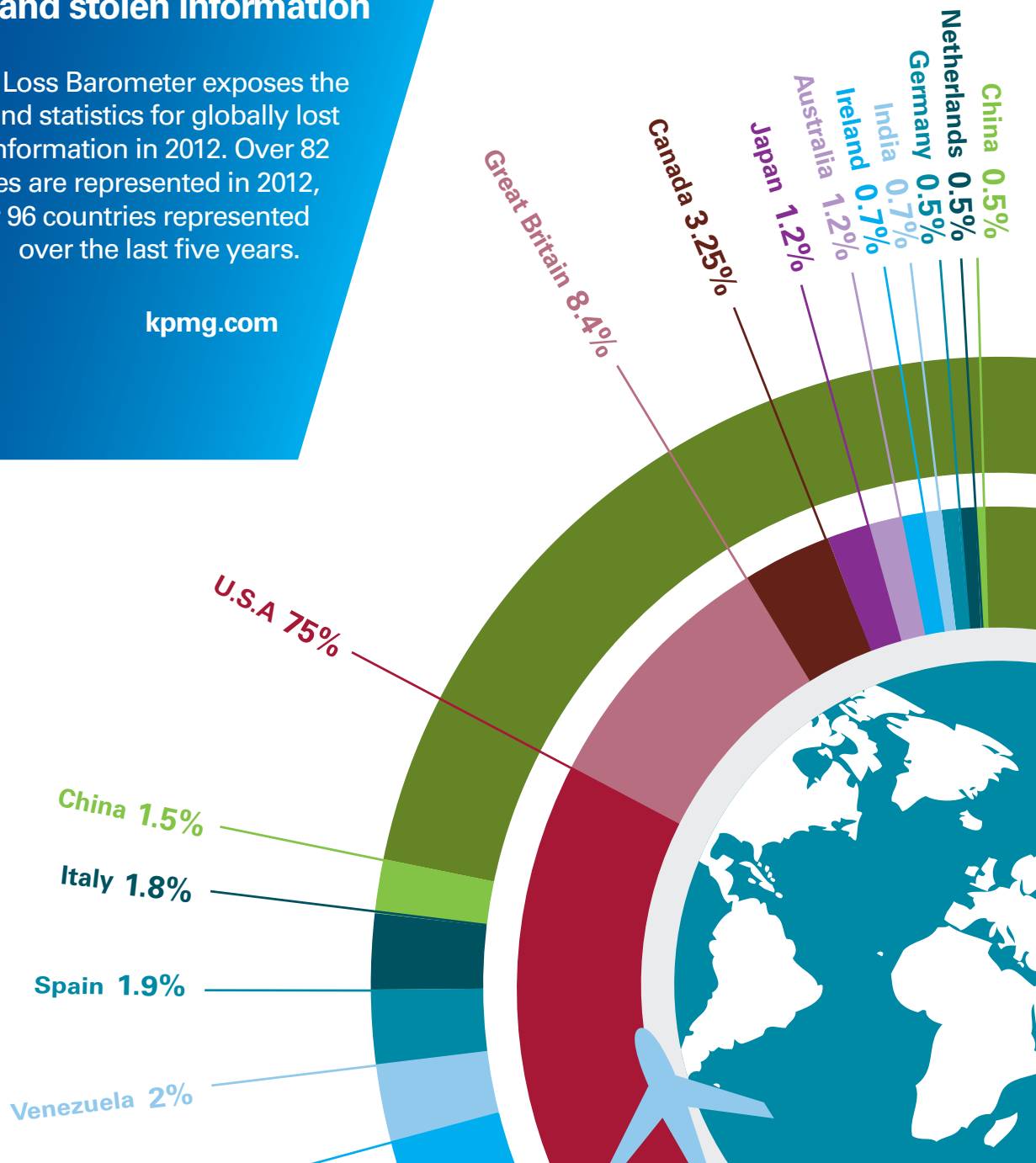
cutting through complexity

DATA LOSS BAROMETER

A global insight into lost and stolen information

KPMG's Data Loss Barometer exposes the latest trends and statistics for globally lost and stolen information in 2012. Over 82 countries are represented in 2012, with over 96 countries represented over the last five years.

kpmg.com



CONTENTS

KEY FINDINGS	3
<u>SECTION ONE</u> OVERVIEW	5
2012 DATA LOSSTRENDS	6
2012 SECTOR TRENDS	8
2008 – 2012 A FIVE YEAR VIEW	10
<u>SECTION TWO</u> CHARTS	12
2012 DATA LOSSTRENDS	13
2008 – 2012 A FIVE YEAR VIEW	17
GLOBAL CHARTS	19

ACKNOWLEDGEMENTS

We would like to thank Risk Based Security for providing the data used in the Data Loss Barometer. In addition, we would like to thank the following project team members for their contribution:

Bona Boralio
Charmaine Servado

Lissa Mitchell
Martin Tyley

KEY FINDINGS



Hacking number one data loss threat

Over the past five years, more than one billion people globally have been affected by data loss incidents. In the last two years, there has been a jump of 40% in the number of publicly disclosed data loss incidents. Over the last five years, 60% of all incidents reported were due to Hacking.



Healthcare sector shows significant improvement

The Healthcare sector, which previously struggled between 2010 and 2011 with the highest number of data loss incidents has shown dramatic improvement in 2012. The percentage of data loss incidents that affected the Healthcare sector has fallen from a high of 25% in 2010, to just 8% in 2012.



Technology sector number one worst performing sector by number of people affected

Over the last five years, the Technology sector, had fewer incidents than the Top Five worst performing sectors (Government, Healthcare, Education, Financial Services, and Retail) however, the percentage of people affected by incidents in that industry remains the highest; accounting for 26% of the total number of people affected.





Insurance sector number one at risk from Social Engineering and System/Human Error

In the first half of 2012, the Insurance sector appears to be at **greatest risk** from Social Engineering attacks and System/Human Error incidents.



First time in five years that insider threat has decreased and is at an all-time low

Surprisingly, for the first time over the last five years, **the threat from malicious insiders has dropped from an average from previous years of 25% of total number of incidents**, to an all-time low of 6.5% in 2012. Conversely, we see a dramatic rise of double the number of incidents from external sources in 2012 from 2010, accounting for 81% of total number of incidents. This could be because the rise in hacking has taken people's eyes off the insider threat – KPMG has not seen an improvement in controls to prevent or detect insiders in the period.



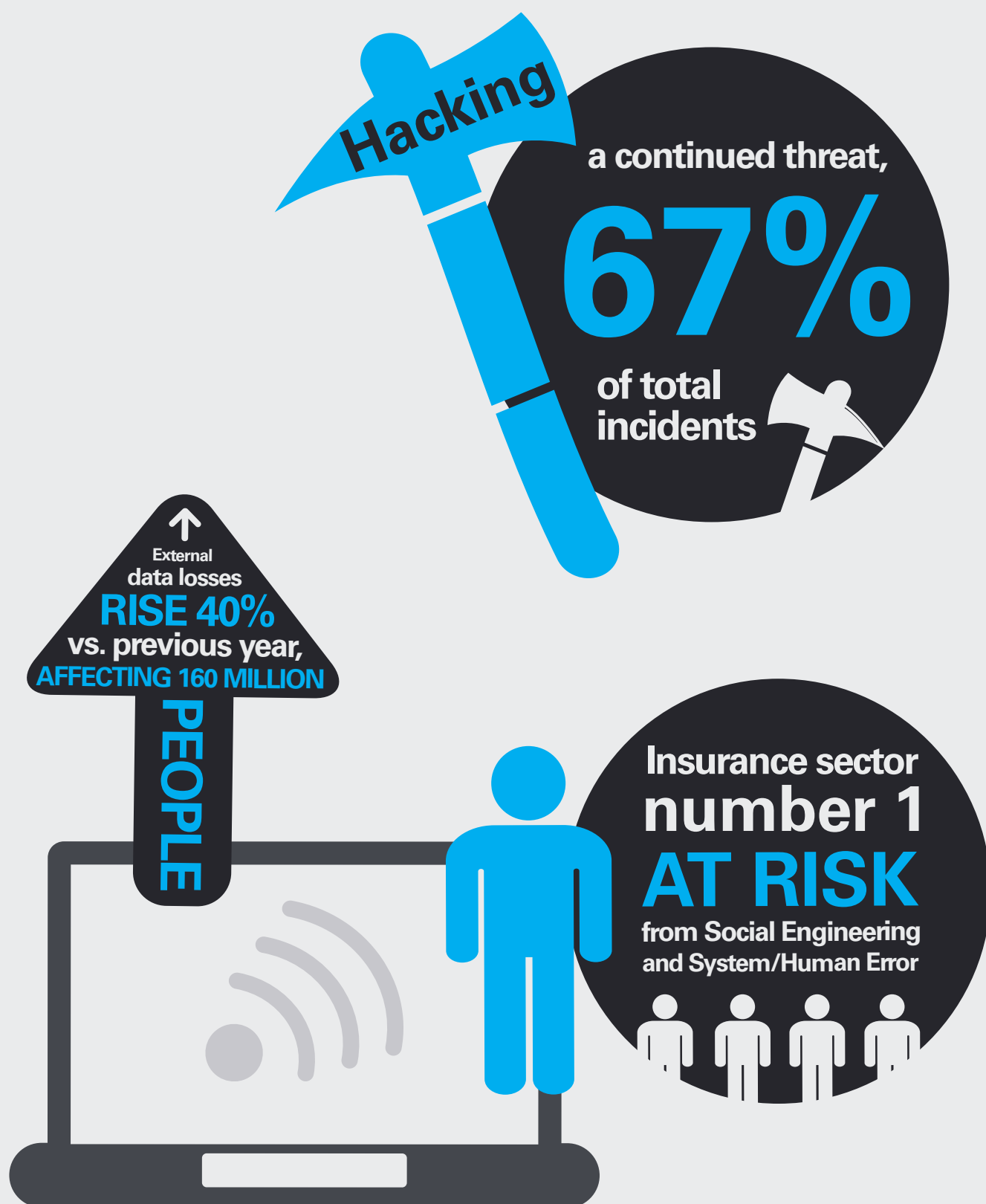
Overall data loss incidents return to similar levels as 2008

Following a fall in reported incidents in 2009-2010 when compared to 2008, the trend has reversed with a higher number of incidents reported in 2011, and total incident numbers in 2012 almost **returning to 2008 levels**. This could be accounted for by a maturing regulatory environment where incidents are being identified and monitored more thoroughly, but is also likely to be a result of the dramatic increase in the sophistication and variety of attacks we have seen in the last 18 months.

SECTION ONE: OVERVIEW

2012 DATA LOSS TRENDS

* January – June 2012





Government,
Education,
& Technology
WORST
affected sectors
for data loss



3 Data loss incidents
involving
third parties
are more
commonplace
in the
Technology
sector



Personally identifiable
information remains
the number

1 data
loss
type)))

2012 SECTOR TRENDS

1

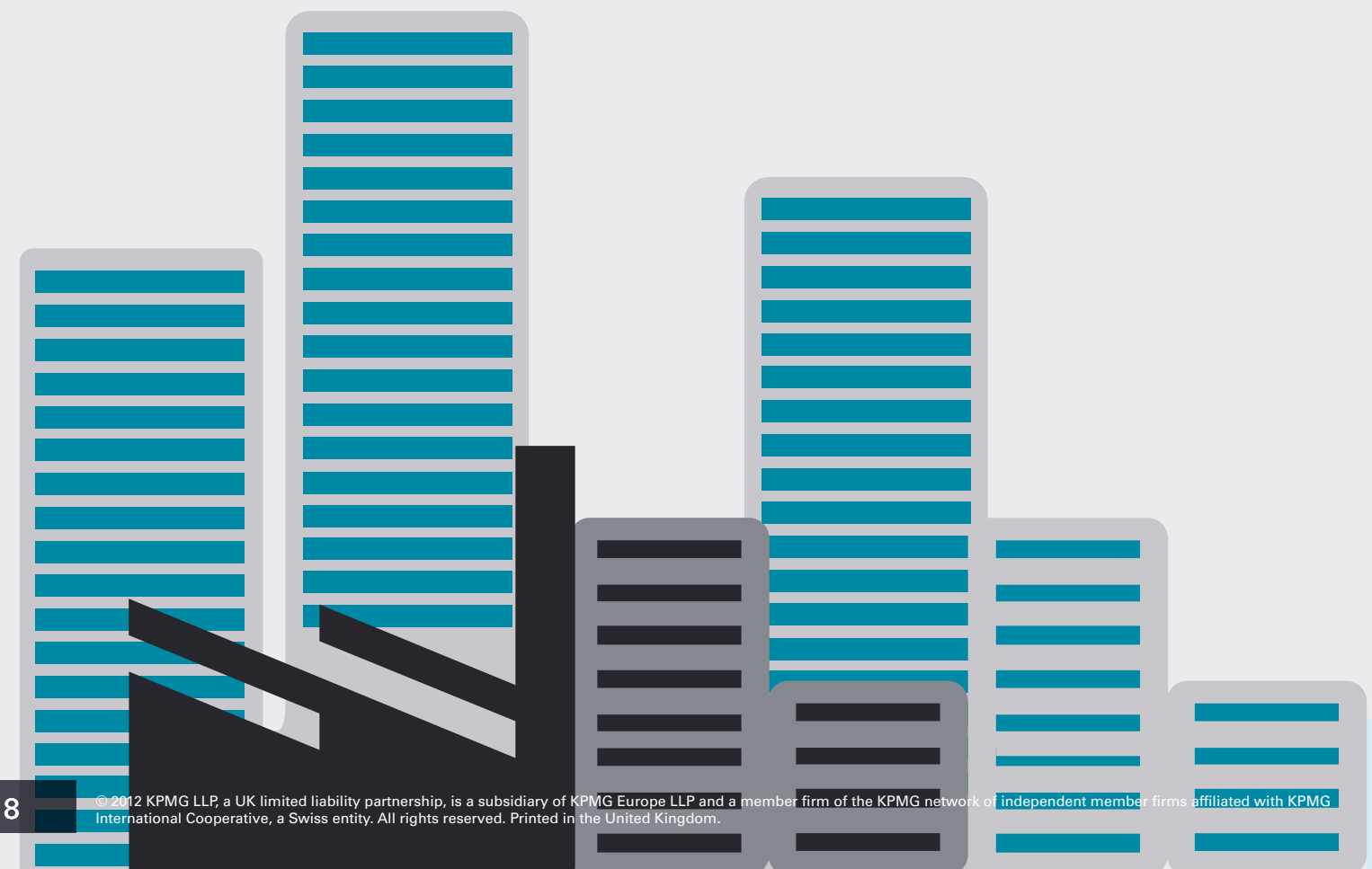
Over 96% of data loss incidents in Media were attributed to Hacking in the first half of 2012.

2

Insurance sector **number one at risk** from Social Engineering and System/Human error in the first half of 2012.

3

Financial services have seen an **80% reduction** in data loss by number of incidents in the last five years, but is still **the fifth worst performing sector** in the first half of 2012.



4

Government has maintained **relatively flat rates** of data loss incident numbers since 2008, ranking either **number one** or **number two** as overall worst performing sector by total number of incidents over the last five years.

5

75% of data loss incidents in Retail were attributed to Hacking in the first half of 2012.

6

18.5 million people have been affected by PC theft. It represents around **1/3 of all data loss incidents** in the Healthcare and Professional Services sectors in the first half of 2012.

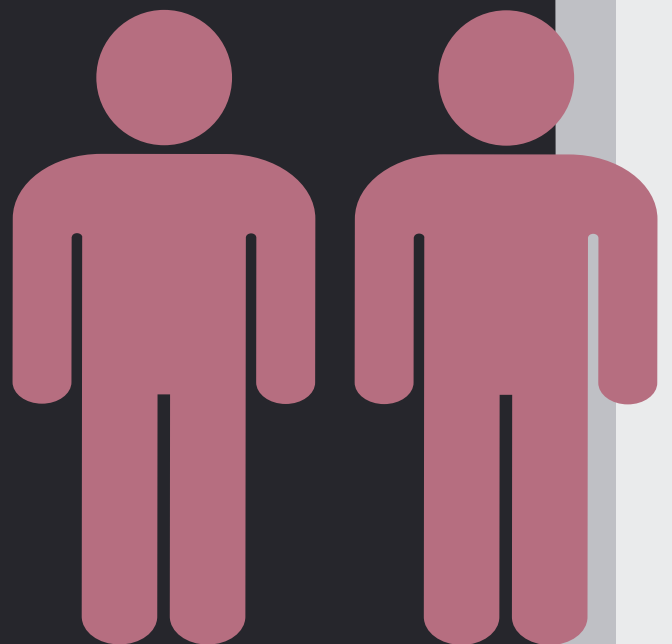
2008 – 2012

A 5 YEAR VIEW

Total number of incidents show Technology, Financial services, Retail and Media as the worst performing sectors



681 million records/people affected by Hacking as number one cause of data loss

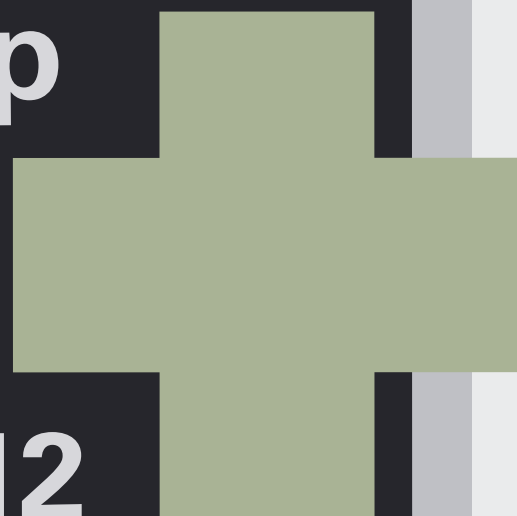


2008	2009	2010	2011	2012
J F M A	J F M A	J F M A	J F M A	J F M A
M J J A	M J J A	M J J A	M J J A	M J J A
S O N D	S O N D	S O N D	S O N D	S O N D

Hard Drive
number one
portable media
incident, but a growth
in DVD/CD incidents



Healthcare sector
shows a sharp
drop in the
number of
breaches in 2012

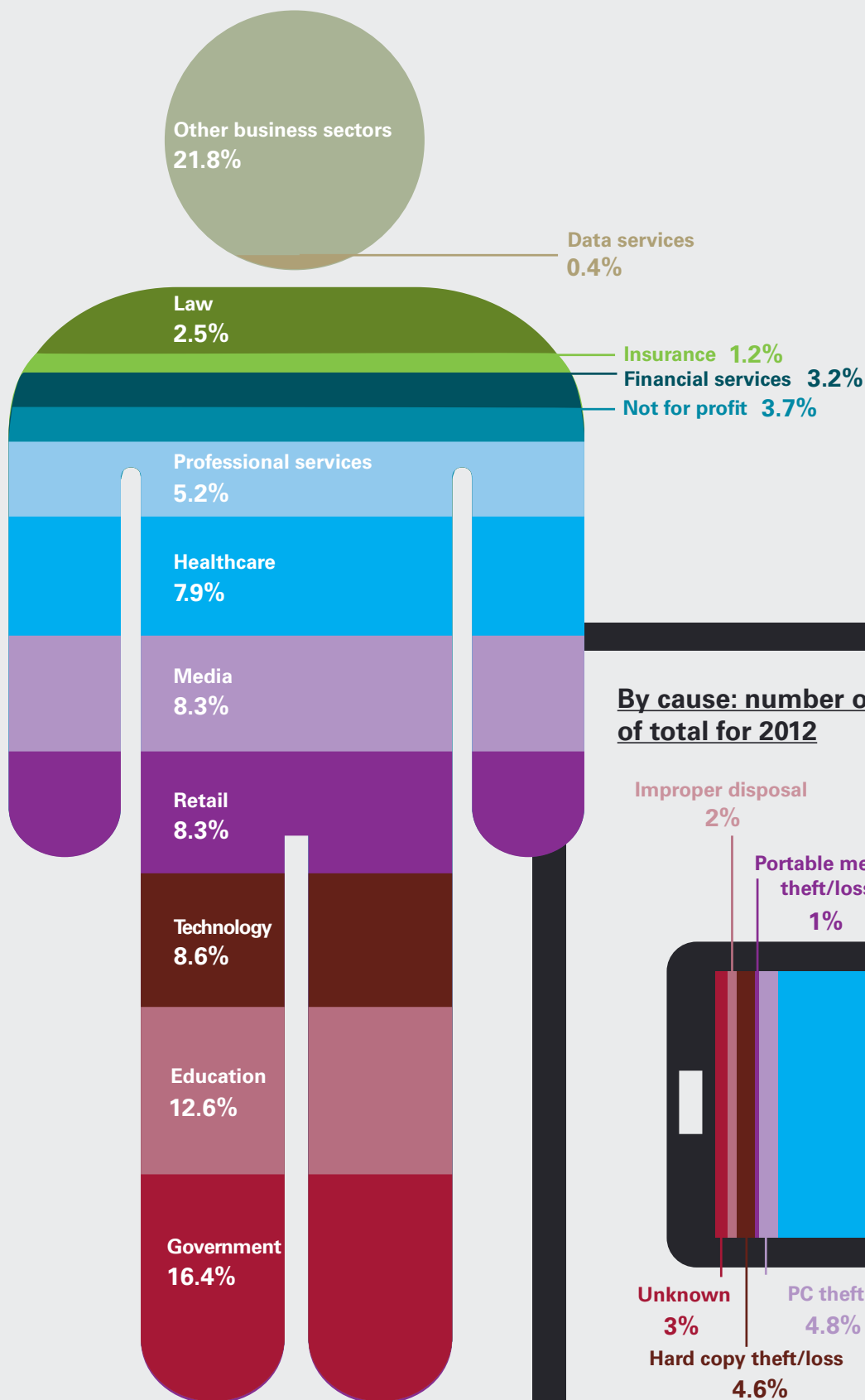


SECTION TWO: CHARTS

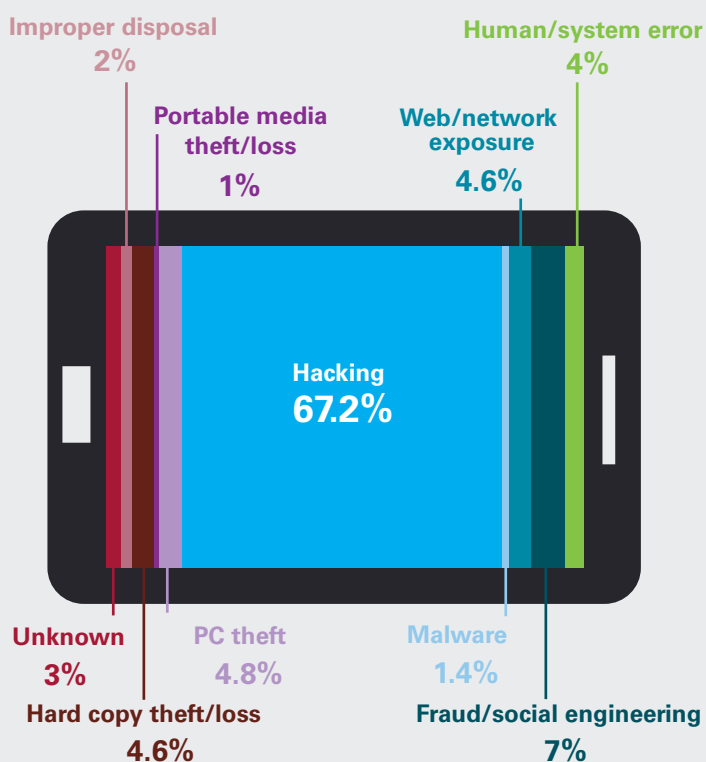
2012 DATA LOSS TRENDS

* January – June 2012

By sector: number of incidents as a percentage of total for 2012

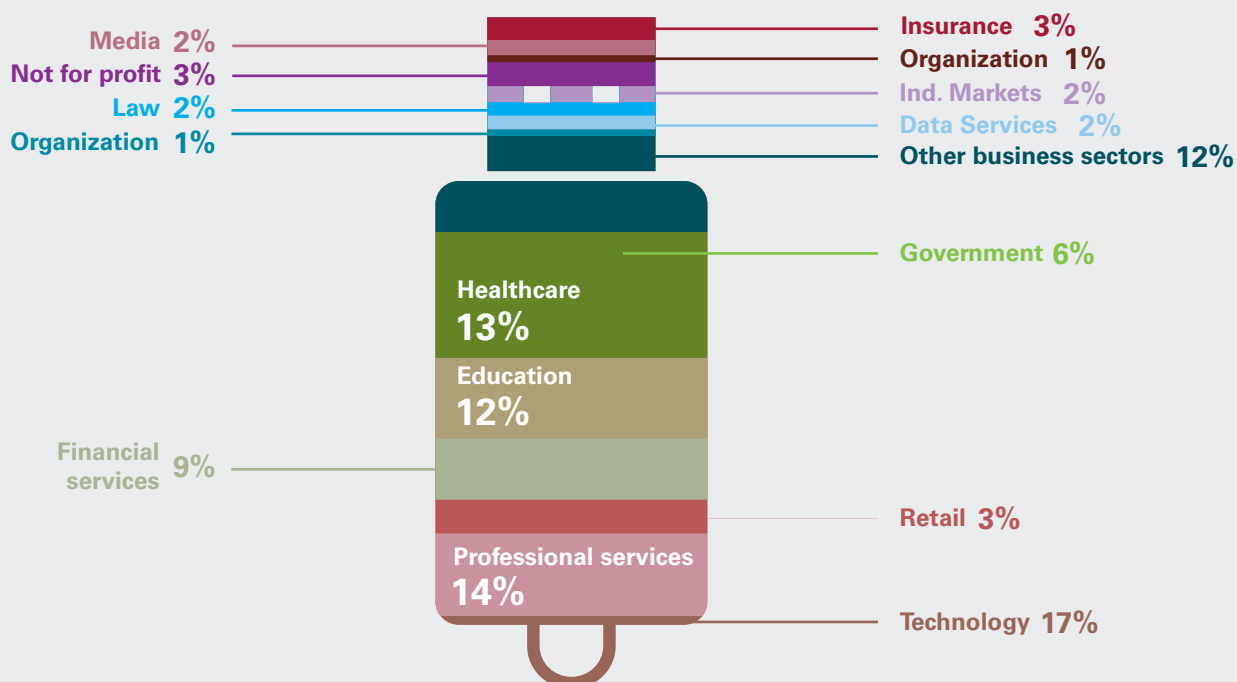


By cause: number of incidents as a percentage of total for 2012

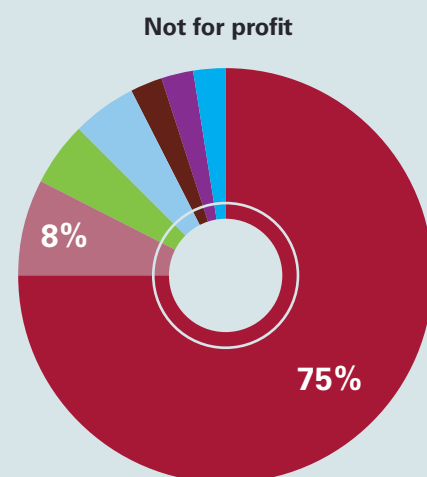
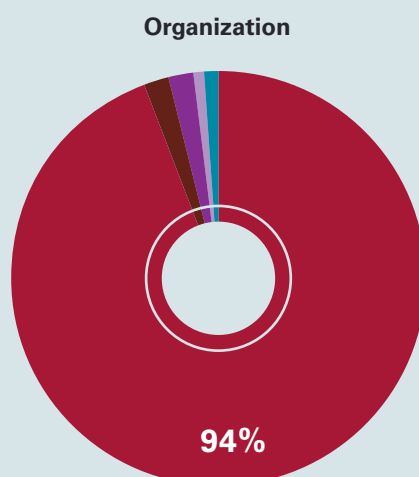
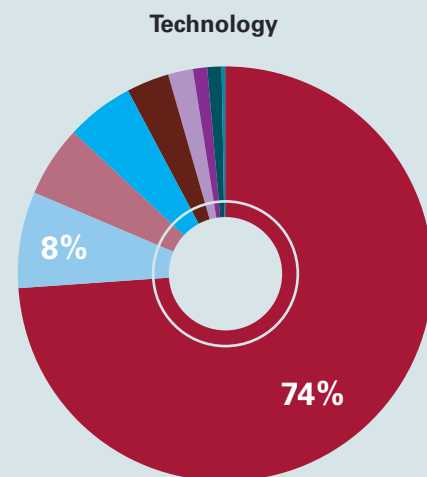
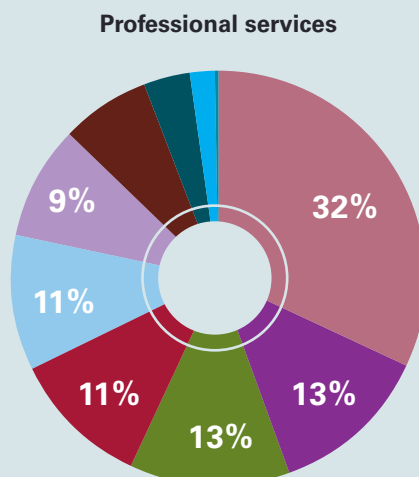
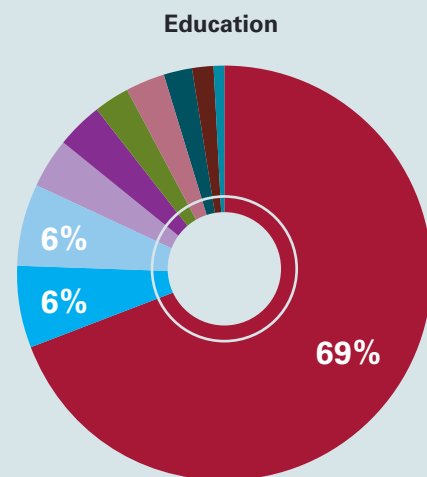
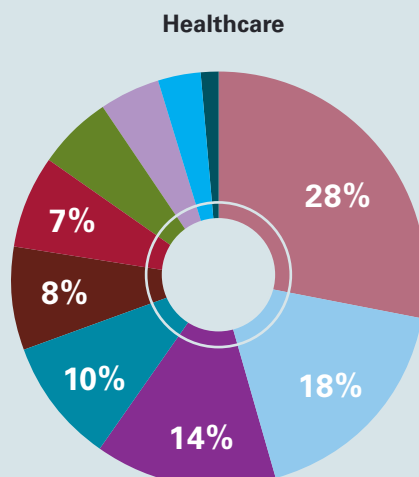
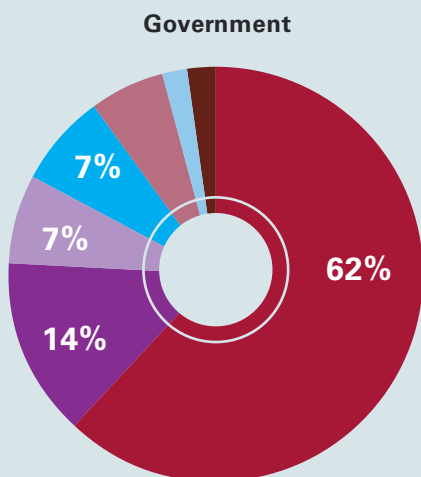




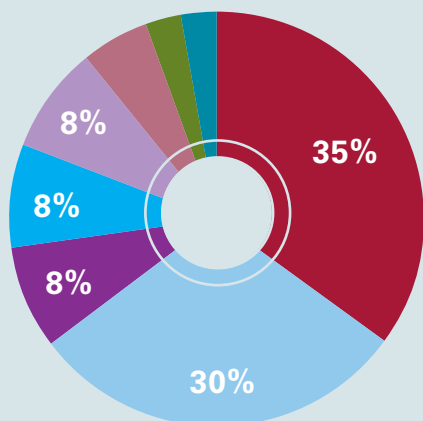
By sector: number of incidents as a percentage where a third-party was involved for 2012



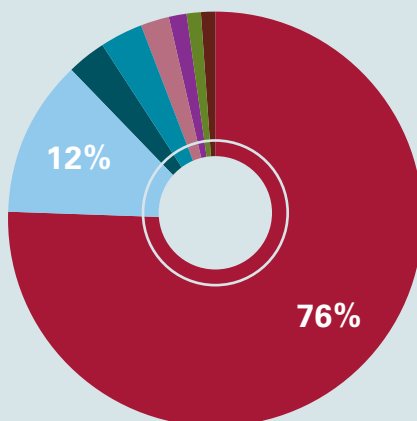
Cause of data loss vs. Industry: number of incidents as a percentage of total for 2012 (January – June)



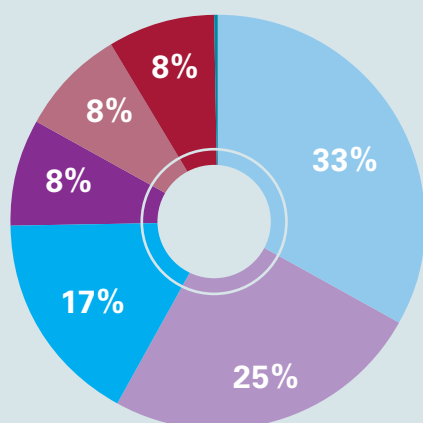
Financial services



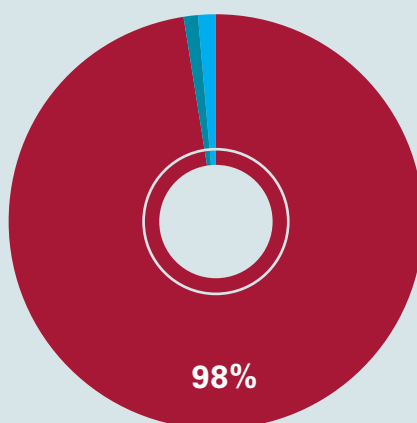
Retail



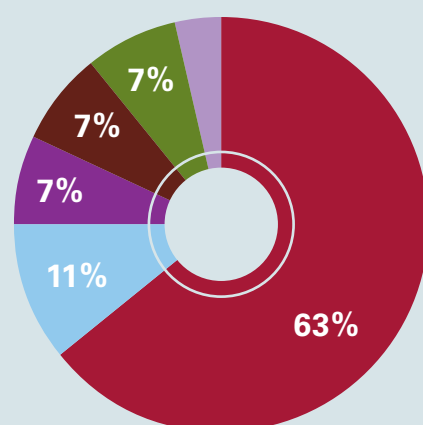
Insurance



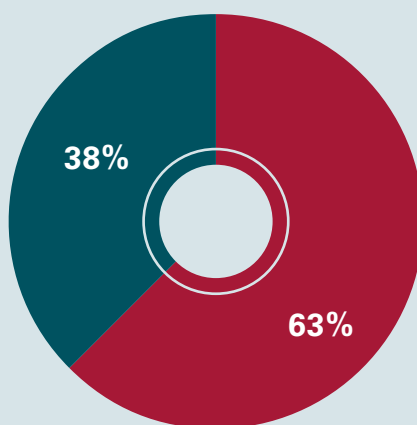
Media



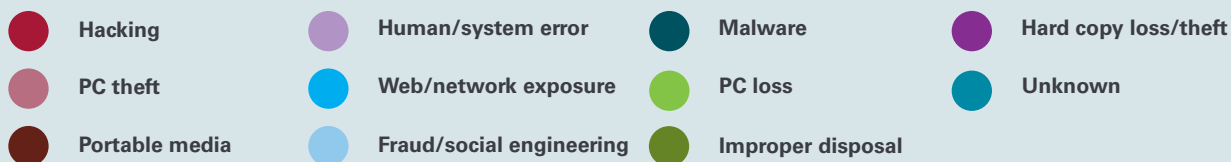
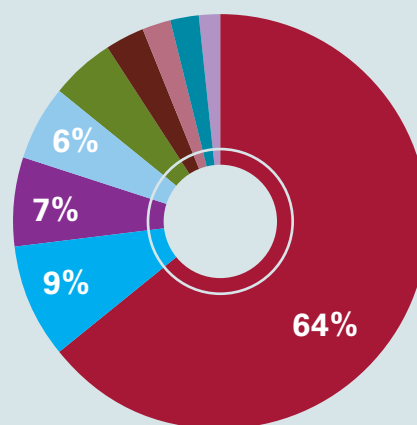
Law firms



Industrial markets

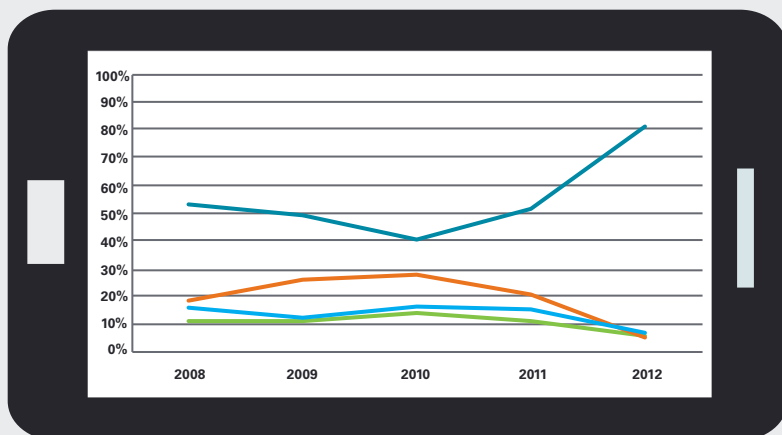


Other business sectors



2008 – 2012

A FIVE YEAR VIEW

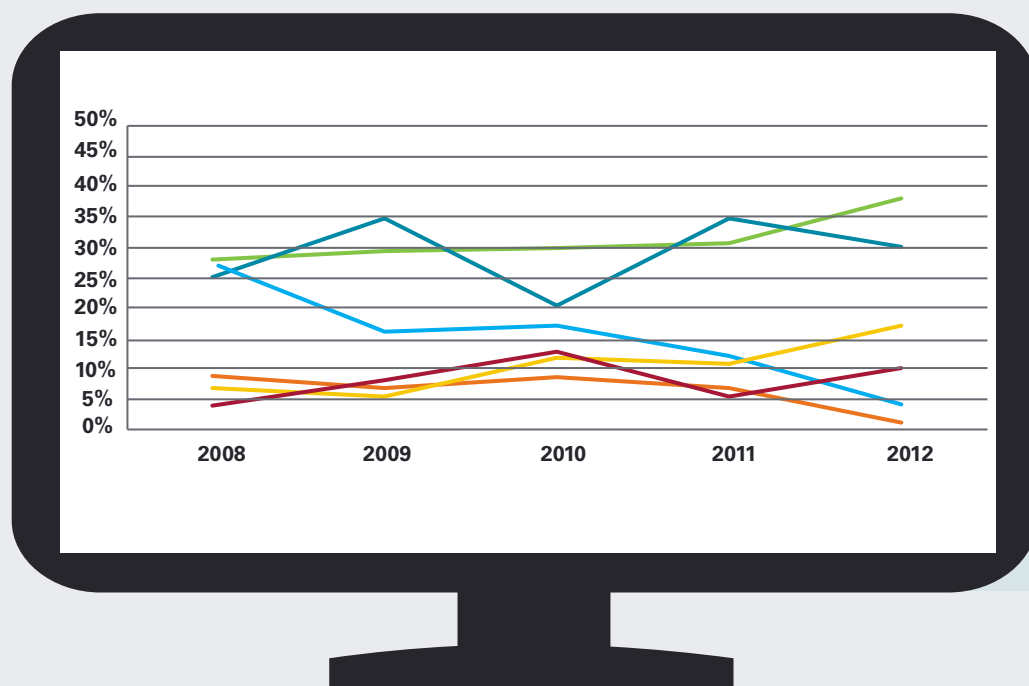
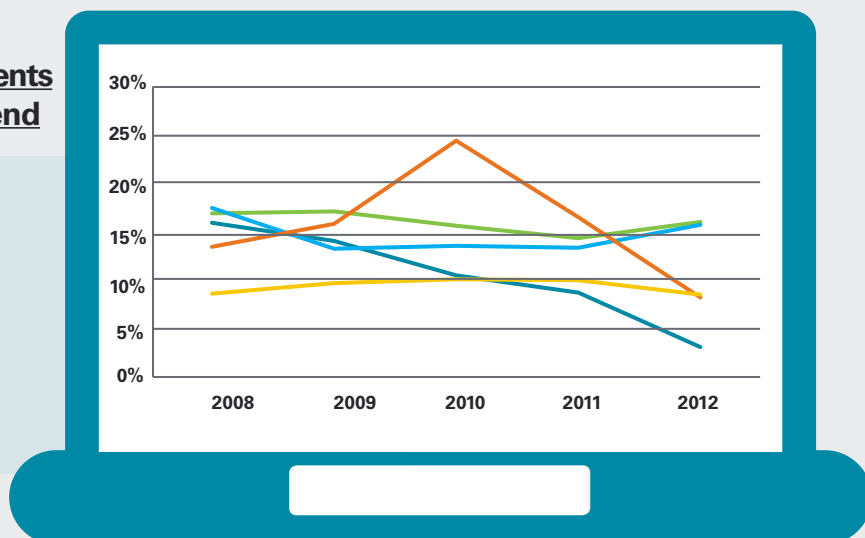


By cause: number of external incidents as a percentage of total – five year trend

- Insider – malicious
- External
- Insider – accidental
- Insider – unknown

By sector (Worst five): number of incidents as a percentage of total – five year trend

- Government
- Financial services
- Education
- Healthcare
- Retail

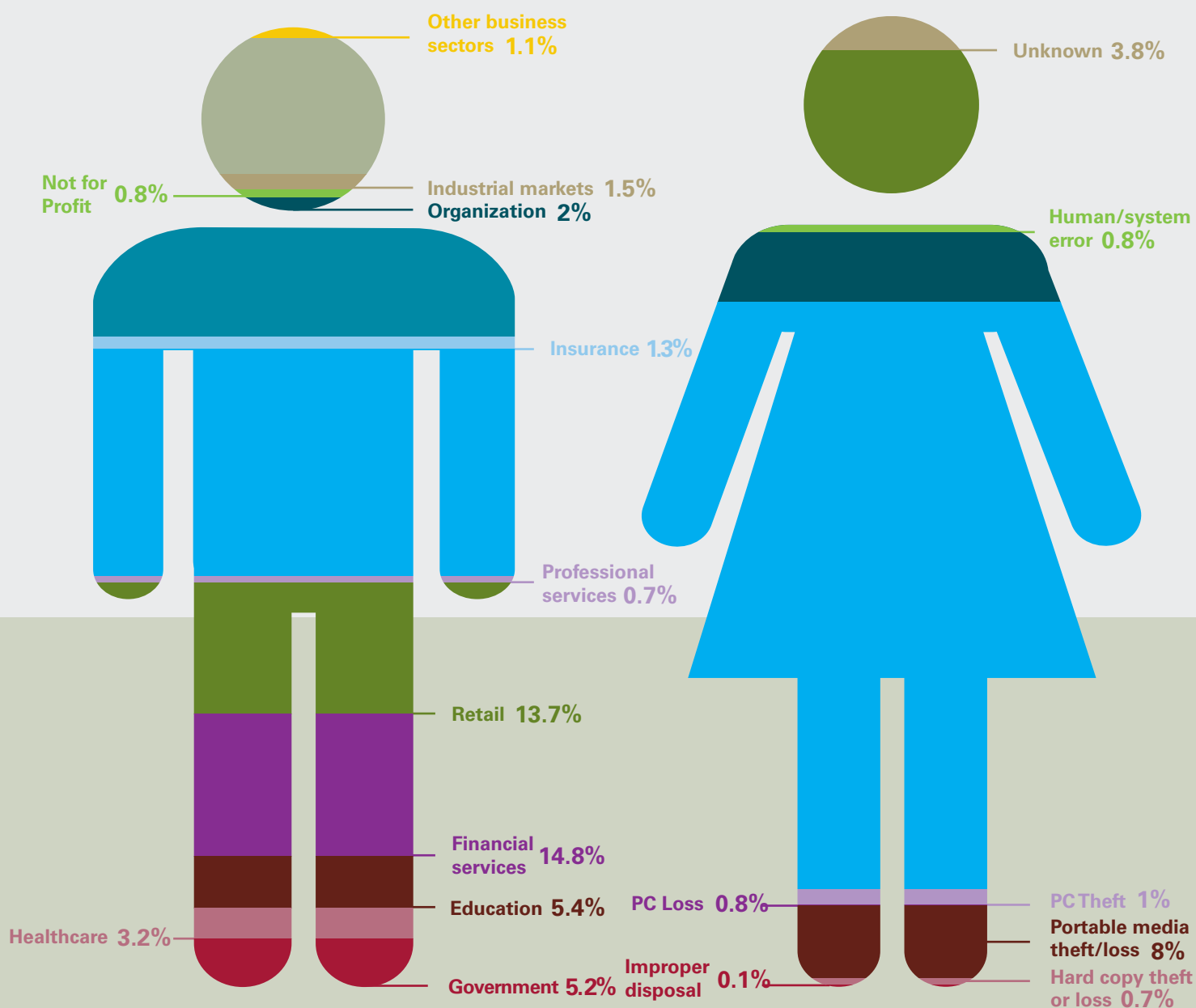


By portable media: number of portable media incidents as a percentage of total – five year trend

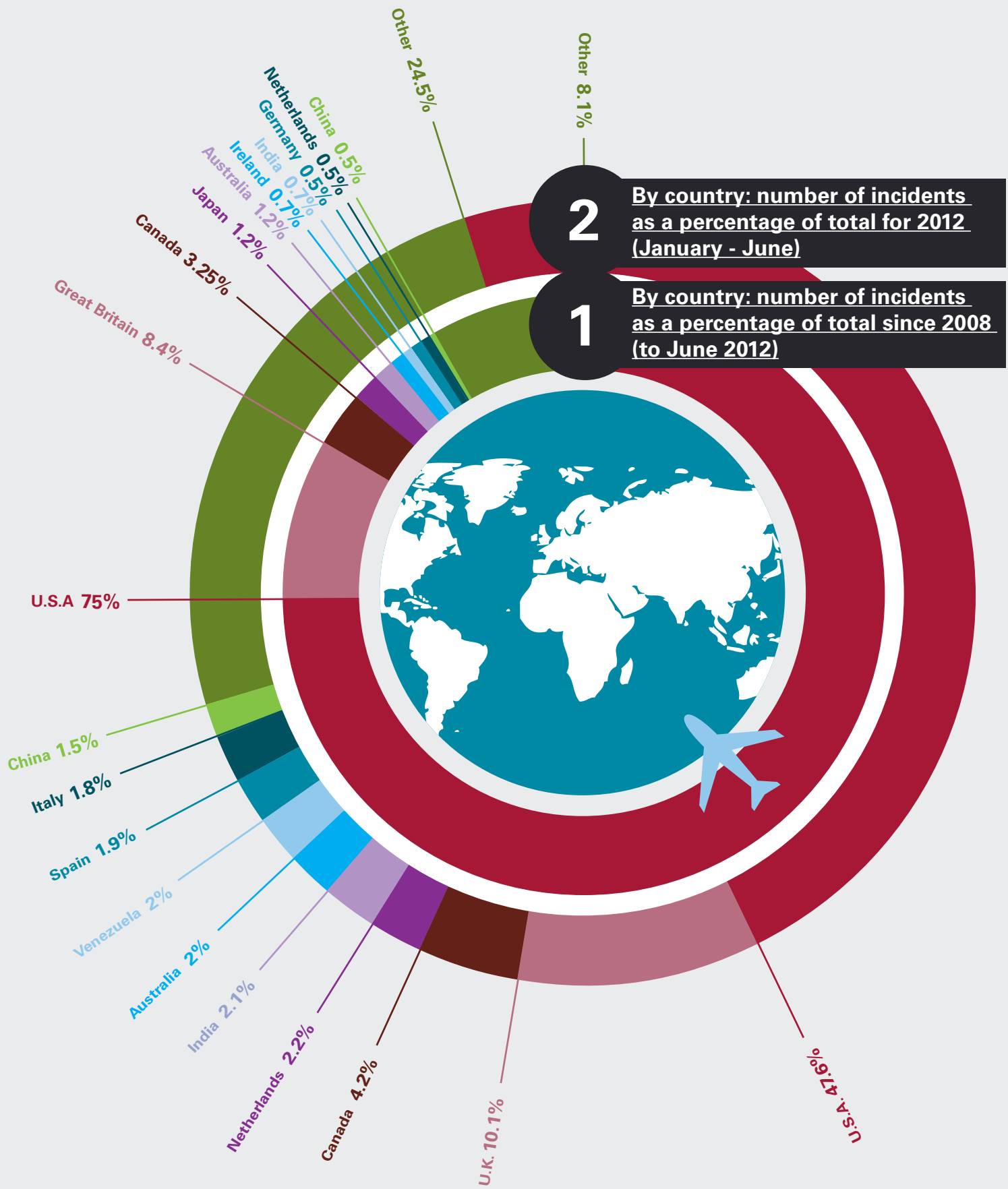
- Hard drive
- USB memory
- Tape
- Other
- DVD/CD
- Mobile device

By sector: number of records/people affected as a percentage of total since 2008 (to June 2012)

By cause of data loss: number of records/people affected since 2008 (to June 2012)

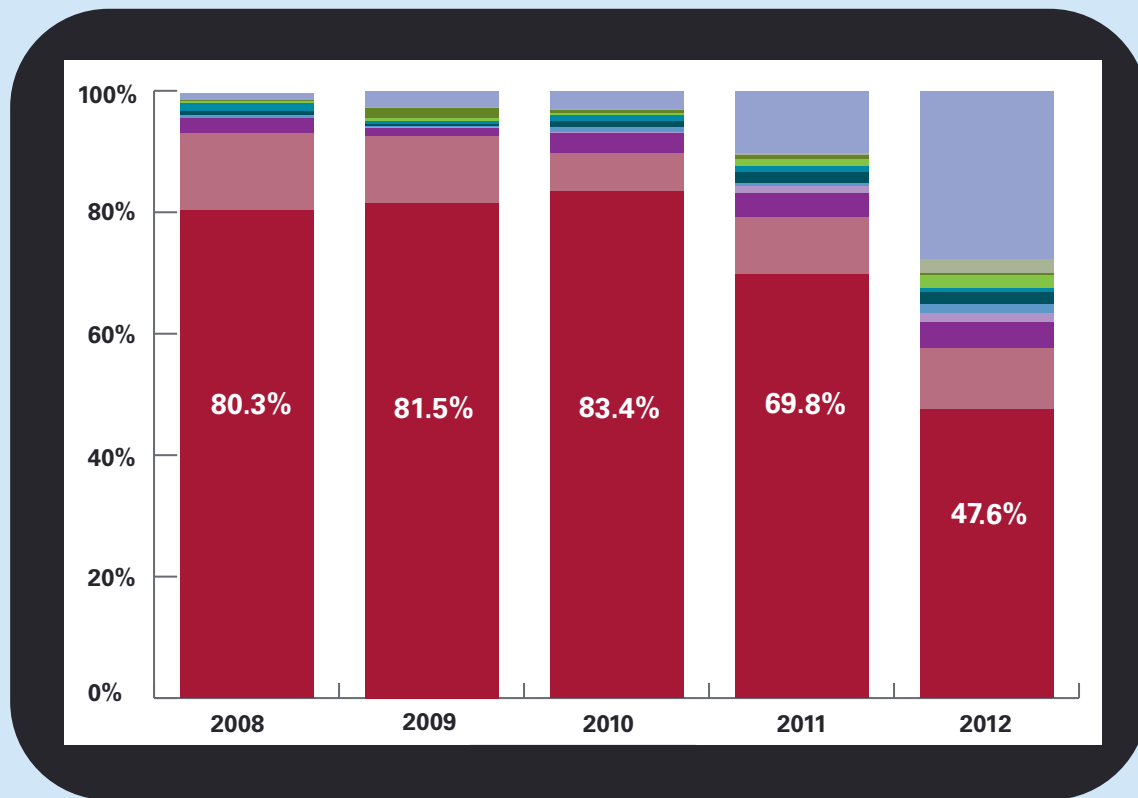


GLOBAL CHARTS





By country: number of incidents as a percentage of total
- five year trend



KPMG Contacts

Contact Us

Malcom Marshall

Partner, UK and Global Leader, Information
Protection and Business Resilience

020 73115456

malcolm.marshall@kpmg.co.uk

Stephen Bonner

Partner, Financial Services, Information
Protection and Business Resilience

020 76941644

stephen.bonner@kpmg.co.uk

Charlie Hosner

Partner, Sectors, Information
Protection and Business Resilience

020 76945801

charles.hosner@kpmg.co.uk

The Data Loss Barometer is being replaced by KPMG's Cyber Vulnerability Index, the first edition of which was published in July 2012, and is available at:

www.kpmg.com/uk/security

The information contained herein is of a general nature and is not intended to address the circumstances of any particular individual or entity. Although we endeavour to provide accurate and timely information, there can be no guarantee that such information is accurate as of the date it is received or that it will continue to be accurate in the future. No one should act on such information without appropriate professional advice after a thorough examination of the particular situation.

© 2012 KPMG International Cooperative ("KPMG International"), a Swiss entity. Member firms of the KPMG network of independent firms are affiliated with KPMG International. KPMG International provides no client services. No member firm has any authority to obligate or bind KPMG International or any other member firm vis-à-vis third parties, nor does KPMG International have any such authority to obligate or bind any member firm. All rights reserved. Printed in U.K.

The KPMG name, logo and "cutting through complexity" are registered trademarks or trademarks of KPMG International.

RR Donnelley I RRD-276985 I November 2012 I Printed on recycled material.