

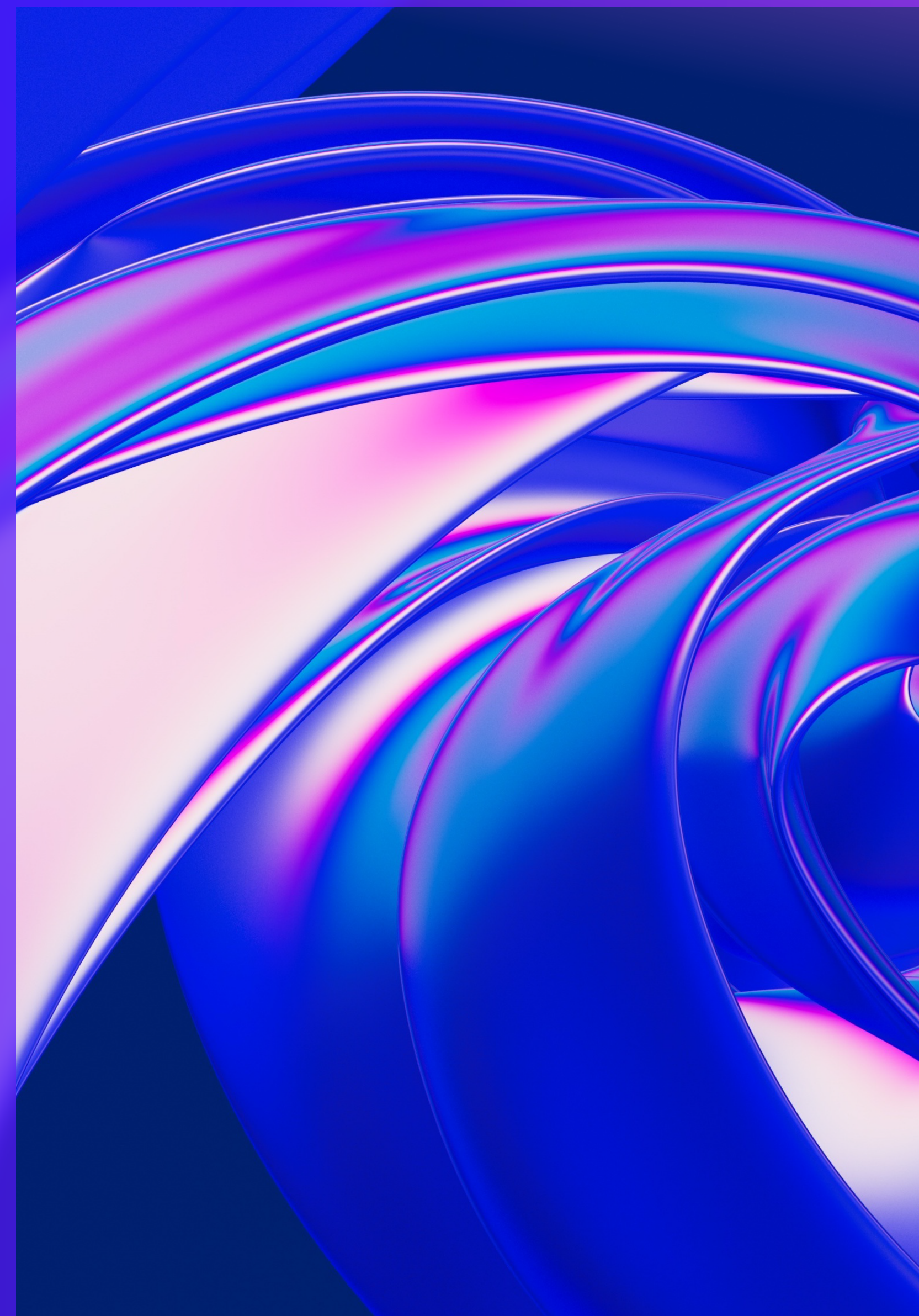


# Timisoara Tax Team

2023

---

[kpmg.ro](https://kpmg.ro)





KPMG in Romania’s Timisoara Tax Team is our largest tax team outside of Bucharest. This is the result of our continued efforts over more than 16 years in developing our business for clients in the Timisoara area.

We are well positioned to provide an integrated and tailored approach, as our team of dedicated professionals cover a wide area of expertise. We are passionate about everything we do, whether we are working shoulder to shoulder with our clients located in the

Western part of Romania, organizing seminars in our Timisoara office or on clients’ premises, working together with local universities, or being involved in local social events. You can find below more details of our Timisoara Tax Team’s capabilities.

Our culture extends beyond good business practice. This has allowed us to develop a consolidated team, bringing together the technical knowledge and expertise of our consultants who have worked together for more than 10 years and the passion and enthusiasm of our younger colleagues. And because we know that working together brings out the best in everyone, we constantly team up with our KPMG Legal colleagues to maximize the value brought to our clients.

Our local expertise includes:

- Tax advisory on direct and indirect taxes
- International taxation
- Bookkeeping services
- Payroll services
- Tax compliance and reviews of tax returns
- Certification of tax returns
- Tax audit support, assistance with administrative complaints and in the following stages
- Tax reviews
- Tax services related to Mergers & Acquisitions; Due diligence and transaction assistance
- Tax structuring and planning
- Global Mobility Services - for expats assigned to/working in Romania and Romanian employees assigned/travelling for business outside Romania
- Preparation of documentation of technological losses for tax purposes
- Transfer pricing services
- Country-by-Country reporting
- R&D incentives
- Review of tax provision
- Assistance related to contributions due to the Environmental Fund, including reviews and tax audit support
- Temporary secondments
- Tax representation services for foreign companies
- Seminars/Webinars
- In-house training courses on tax
- Corporate Tax Manager App

Contact us



Alin Negrescu

Partner,  
Taxation Services  
vnegrescu@kpmg.com



Adina Bănici

Associate Director,  
Taxation Services  
aman@kpmg.com



Corina David

Senior Manager,  
Taxation Services  
cdavid@kpmg.com



Vlad Foica

Senior Manager,  
Taxation Services  
vfoica@kpmg.com



Alina Negoită

Manager,  
Taxation Services  
acristoiu@kpmg.com



Raluca Radosav

Associate Manager,  
Taxation Services  
rradosav@kpmg.com



Timisoara Office

ISHO Offices  
Take Ionescu blv. no. 50,  
Building A, 7th floor