



Establishing a family office in Singapore

**Structuring considerations
and tax incentive schemes**

May 2021



What is a family office?

The idea of a family office is a flexible one. Fundamentally, a family office is an entity that has been established to provide services to high-net-worth ('HNW') families.

A key function of the typical family office is the management of the assets of one or more HNW families. These assets may be held by captive investment vehicles which form part of a broader wealth planning structure. A family office may also provide concierge services. These can range from routine matters of family administration through to the management of luxury assets and properties.

A single family office ('SFO') is one that provides services to members of the same family. This may be contrasted with a multi-family office which provides services to members of different families. SFOs in particular are becoming an increasingly important part of the wealth planning landscape. It is estimated that there are over 200 SFOs operating in Singapore which have in excess of S\$27 billion in assets under management.



Why establish a family office?

The services that may be provided by a family office are almost infinitely varied. They are loosely grouped as follows:



INVESTMENT MANAGEMENT

Managing accumulated wealth. This may be on a discretionary basis or supervising external managers



LUXURY ASSETS

Managing the administration of luxury assets such as residential properties, aircraft and yachts

FAMILY ADMINISTRATION



Providing administration services to individual family members

FAMILY GOVERNANCE



Centralising and formalising decision-making

PHILANTHROPY



Furthering philanthropic objectives through direct initiatives or grant-making

FUNCTIONS OF A FAMILY OFFICE



Single Family Offices in Singapore



Why Singapore?

Singapore is a leading financial services hub and is regarded as a gateway to the region.

It is renowned for having an open and well-regulated economy that is well served by a vibrant ecosystem of bankers, fiduciaries and advisors.

Singapore has low rates of both personal and corporate taxation.

It has a measured approach to regulation with agencies such as the Monetary Authority of Singapore ('MAS') and the Economic Development Board ('EDB') adopting a pro-business approach.

Singapore is a place where many HNW individuals and their trusted advisors are happy to live and work.

It is well connected internationally with direct flights to most investment and lifestyle destinations.

A Singapore SFO can be used as part of the personal planning of HNW family members.

A Singapore SFO may sponsor employment passes and may even be used as part of an application for permanent residency by HNW family members under the Global Investor Programme which is administered by the EDB.

What are the different SFO structures to consider?

The SFO structures in Singapore are typically designed to be exempt from regulation under local securities law. This avoids the need for the SFO to obtain a license or become registered to provide fund management services to the investment vehicles held by a HNW family.

There are two exemptions which are typically relied upon:

- 1. Exemption for 'related corporations' which applies automatically**
- 2. Application to the MAS for an exemption from regulation**

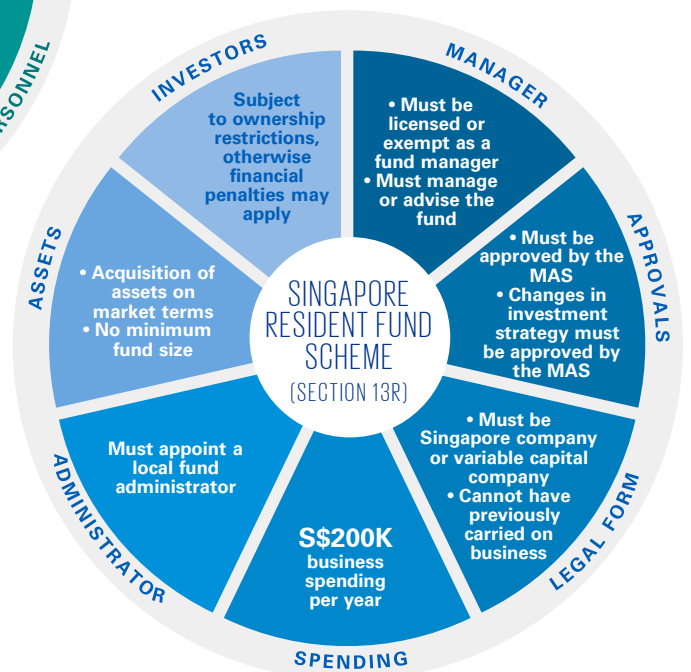
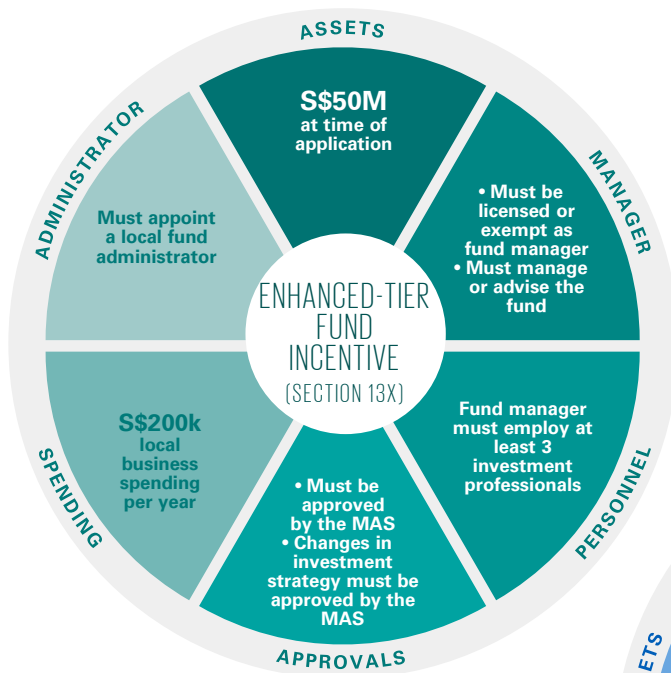
The MAS may grant this exemption where a SFO only manages assets which are held by members of the same family.

A SFO which is either licensed to provide fund management services, or is exempt from licensing, is considered to be a fund manager for the purposes of Singapore's fund tax incentives. These are established by specific provisions in the Singapore Income Tax Act (Cap. 134) ('ITA').

The suite of fund tax incentives provide an exemption from Singapore tax on income and gains made in relation to most types of financial assets. Notably, this tax exemption does not apply to income or gains from Singapore real estate and certain other financial assets which confer an indirect ownership interest in Singapore real estate.

Tax incentive schemes for SFOs

The Enhanced-Tier Fund Tax Incentive of Section 13X of the ITA and the Singapore Resident Fund Scheme of Section 13R of the ITA are commonly used as part of the establishment of a SFO-based structure. These tax incentives are sought by the investment vehicles themselves which are managed by a SFO.



Singapore’s fund tax incentives are complimented by an exemption on interest withholding tax which can be relied upon by qualifying funds. These qualifying funds are also able to reclaim most of the Singapore Goods and Services Tax (‘GST’) charged by local suppliers which includes GST which may be charged by a Singapore SFO.

The combination of an exemption from

regulation and Singapore’s fund tax incentives means that a Singapore SFO structure can be highly tax-efficient with a relatively low regulatory burden. Where a Singapore company is used to hold the accumulated wealth of a HNW family, this tax efficiency can be further enhanced by the ability to claim benefits under Singapore’s extensive network of double taxation agreements.

Why are Singapore SFOs becoming popular amongst HNW families?

A key advantage of a Singapore SFO structure is that it may be easily integrated into almost any type of wealth planning structure.

Singapore is a well-regarded jurisdiction for the establishment and administration of trusts.

It is common for a Singapore SFO and the investment funds that it manages to be held as part of a family trust. The use of the trust provides a number of advantages. Structured correctly, the assets in the trust are not considered to be owned by a HNW individual and are therefore much more difficult for a creditor or other adverse party to claim. These assets also do not form part of the estate of a HNW when they pass away. This can have a number of succession planning benefits.

Trusts in Singapore are generally administered by professional trustees. Either an institutional trustee or a private trust company is appointed as trustee. A Singapore SFO may also be used as part of an international wealth planning structure which is ultimately owned by foreign succession vehicles. These include foreign trusts and civil law entities such as foundations.

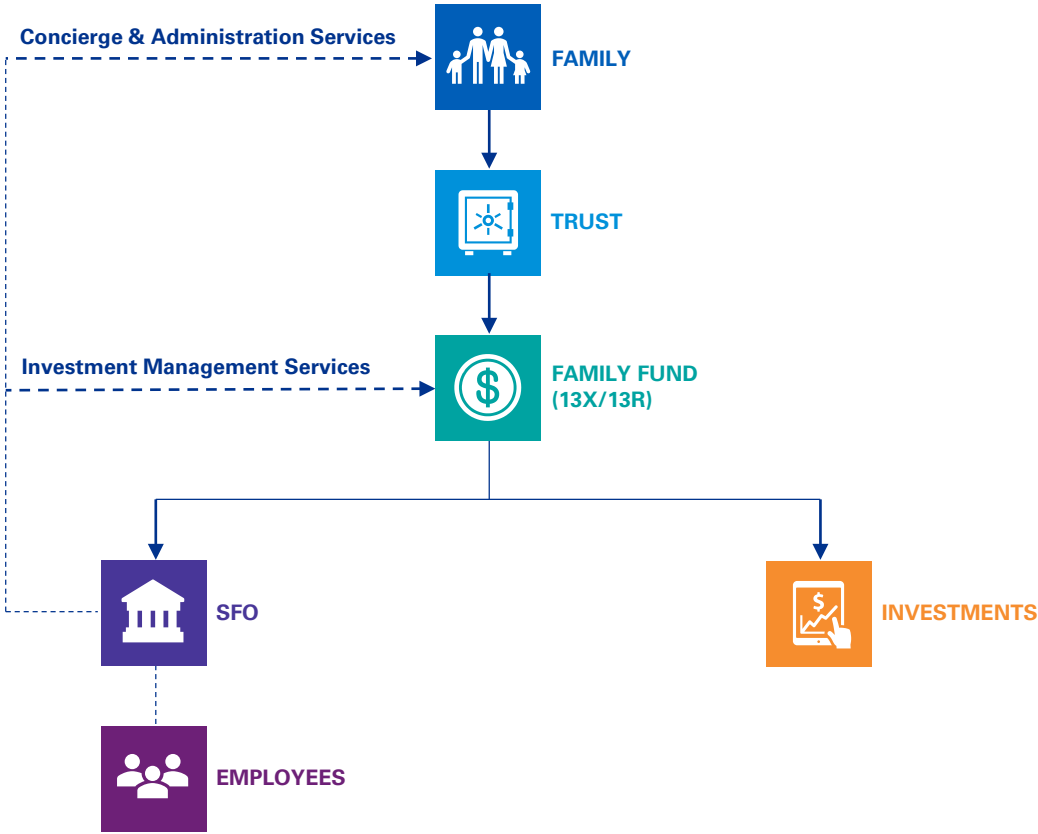
A Singapore SFO may be used as a key part of the philanthropic objectives of a HNW family.

It may be appointed to manage the assets of a HNW family which have been allocated to charitable or philanthropic objectives. These assets may be held in a separate vehicle such as a charitable trust or company limited by guarantee. A SFO may also employ the staff who are responsible for identifying grant-making opportunities and for implementing projects.

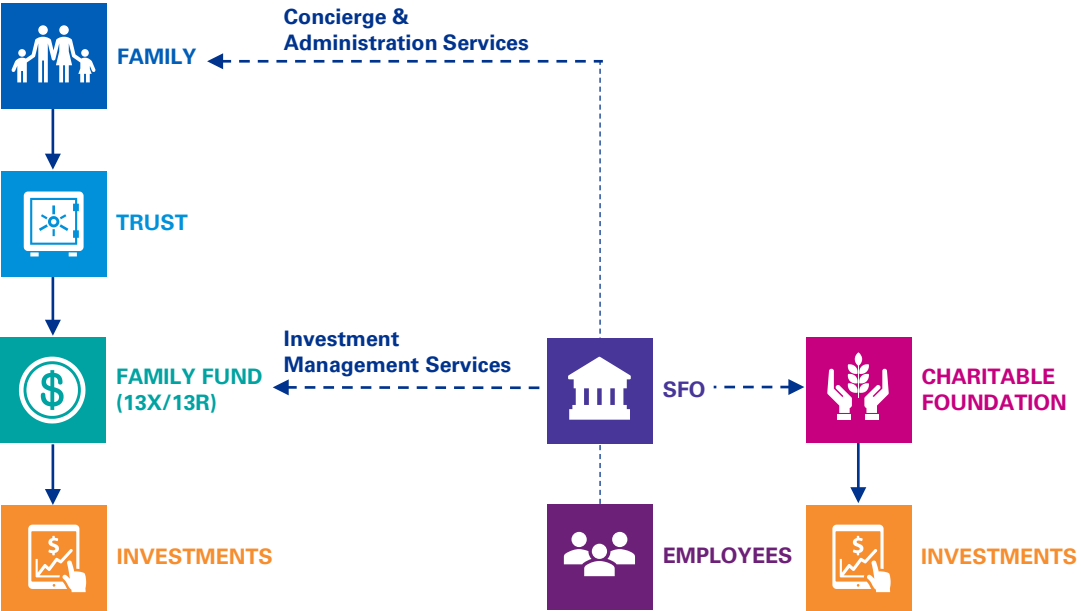
There is a wide variety of structuring possibilities and this flexibility is one of the reasons why Singapore SFO structures have become so popular amongst HNW families.



SFO structure example 1



SFO structure example 2



*SFO requires a license or an exemption from the MAS



How we can help

Our services:

- Structuring and tax advisory
- Singapore fund tax incentives such as Section 13X and Section 13R
- Corporate governance, regulatory and compliance advisory
- Corporate finance and deal advisory
- Dispute advisory
- Due diligence and transaction support
- Philanthropy consulting
- Corporate secretarial
- Virtual family office – accounting, bookkeeping and payroll
- Statutory and non-statutory audit
- Accounting advisory, including forensic accounting
- Licensing and regulatory compliance
- CRS and FATCA advisory and compliance
- Income tax and GST compliance
- Personal tax and immigration
- Transfer pricing analysis and documentation

Contact us

REAL ESTATE & ASSET MANAGEMENT, TAX

Teo Wee Hwee

Partner
Head of Real Estate & Asset Management, Tax
T: +65 6213 2166
E: weehweeteo@kpmg.com.sg

Stephen Banfield

Partner
Head of Family Office & Private Client
T: +65 6213 3399
E: stephenbanfield@kpmg.com.sg

Nandini Navale

Director
T: +65 6213 3070
E: nandininavale@kpmg.com.sg

Pearlyn Chew

Director
T: +65 6213 2282
E: pchew@kpmg.com.sg

R&D & GRANTS CONSULTING

Ho Kah Chuan

Director
T: +65 6213 7303
E: kahchuanho@kpmg.com.sg

PERSONAL TAX & GLOBAL MOBILITY SERVICES

Anna Low

Partner
T: +65 6213 2547
E: alow@kpmg.com.sg

Lee Yiew Hwa

Principal Advisor
T: +65 6213 2866
E: yiewhwalee@kpmg.com.sg

KPMG

16 Raffles Quay
#22-00 Hong Leong Building
Singapore 048581
T: +65 6213 3388
F: +65 6220 9419
E: tax@kpmg.com.sg

kpmg.com.sg



The information contained herein is of a general nature and is not intended to address the circumstances of any particular individual or entity. Although we endeavour to provide accurate and timely information, there can be no guarantee that such information is accurate as of the date it is received or that it will continue to be accurate in the future. No one should act on such information without appropriate professional advice after a thorough examination of the particular situation.

© 2021 KPMG Services Pte. Ltd. (Registration No: 200003956G), a Singapore incorporated company and a member firm of the KPMG global organisation of independent member firms affiliated with KPMG International Limited, a private English company limited by guarantee. All rights reserved.