



KPMG Apollo Program

Manage cyber threats with the beacon of Threat Hunting

At a glance: Key challenges

Emerging tech like AI and machine learning are revolutionising the way businesses operate and communicate with clients and customers. In the face of persistent and emerging cyber trends, business leaders are increasingly having to navigate new challenges in digital security. These include:



Demand for process excellence

As the global economy evolves, businesses are constantly looking for smart solutions to enhance their cyber posture while maximising productivity and efficiency.



Talent gap

Even as the demand for trained cybersecurity professionals grows, scarcity in talent supply is creating potential gaps in security.



Increased regulatory frameworks

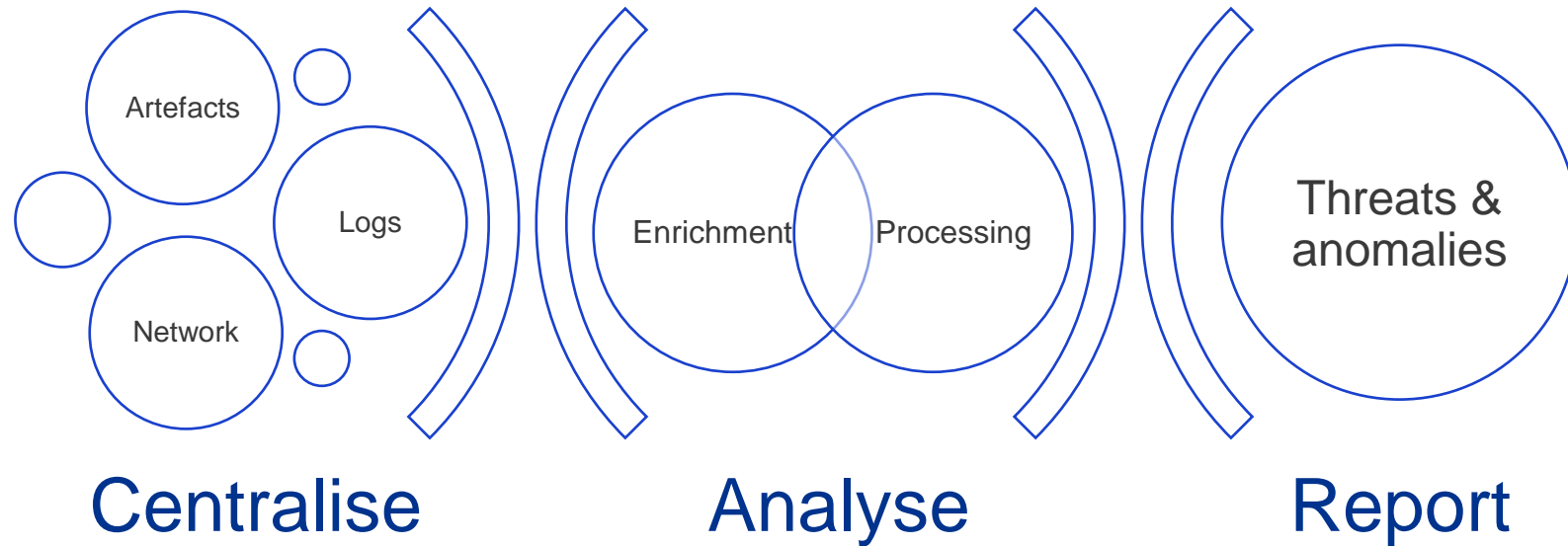
The increasing frequency and sophistication of cyber threats is driving the demand in regulation and compliance.



Apollo is a cyber security strategy, that provides visibility, data centralisation and risk control.

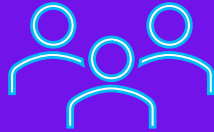
By bringing essentials of Cyber Threat Hunting. Now, not after.

What is Cyber Threat Hunting?



Cyber Threat Hunting (CTH), or Compromised Assessment is a proactive, mature process designed to identify **hidden threats** in an organization's environment before they cause damage.

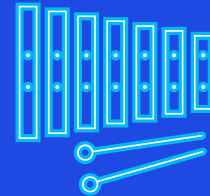
The challenges of CTH



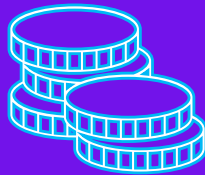
Specialised skills



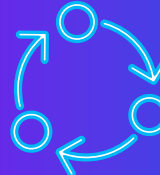
Significant manhours



Advanced infrastructure
& visibility



Funds



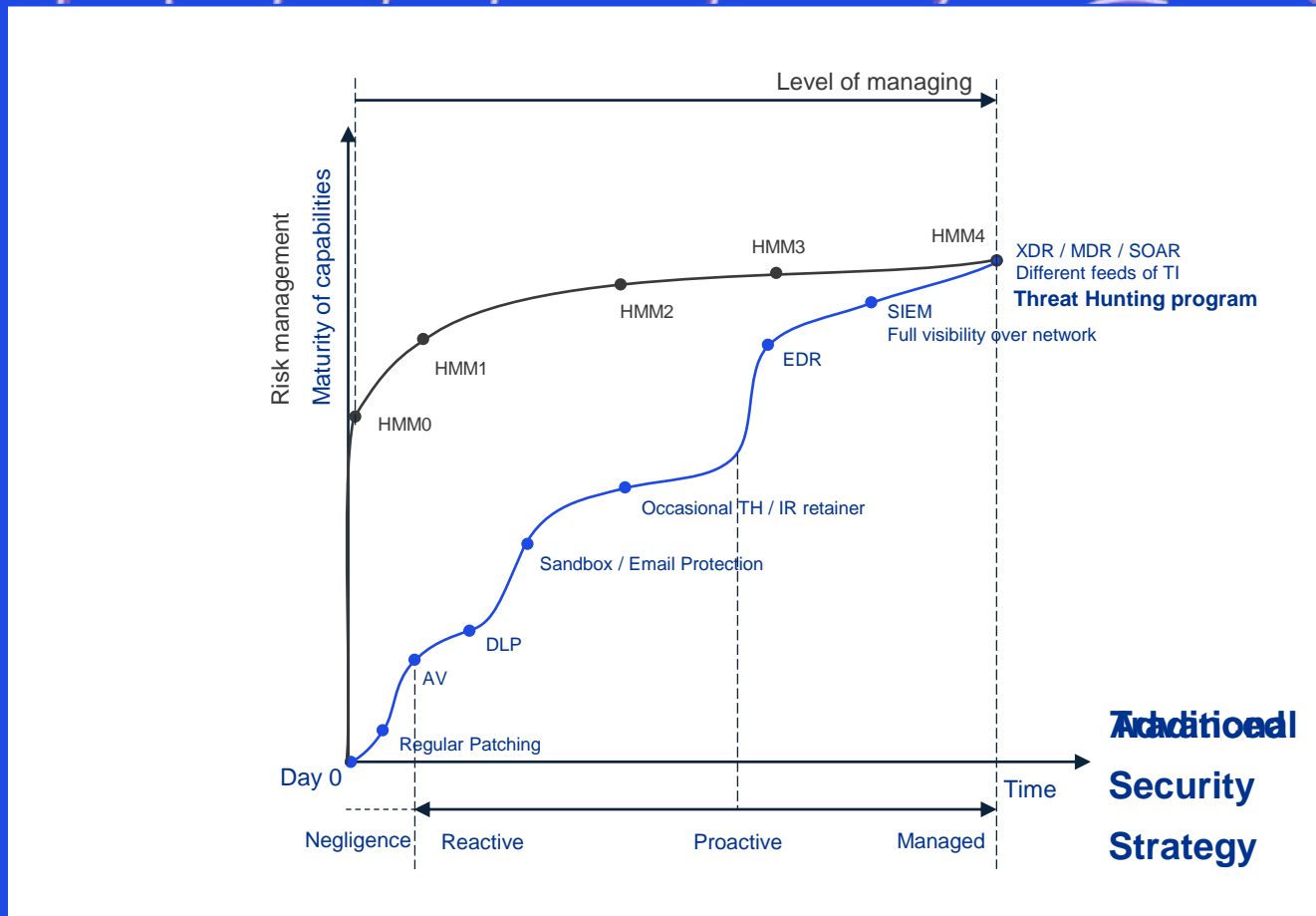
Complexity of the process

Without any part, CTH risks being inefficient or incomplete. Many organizations struggle to scale threat hunting due to the complexity of maintaining both the technical capabilities and skilled professionals needed to effectively manage and interpret the data.



Attackers won't wait. So do you. Have risk management before capabilities.

HMM – Hunting Maturity Model

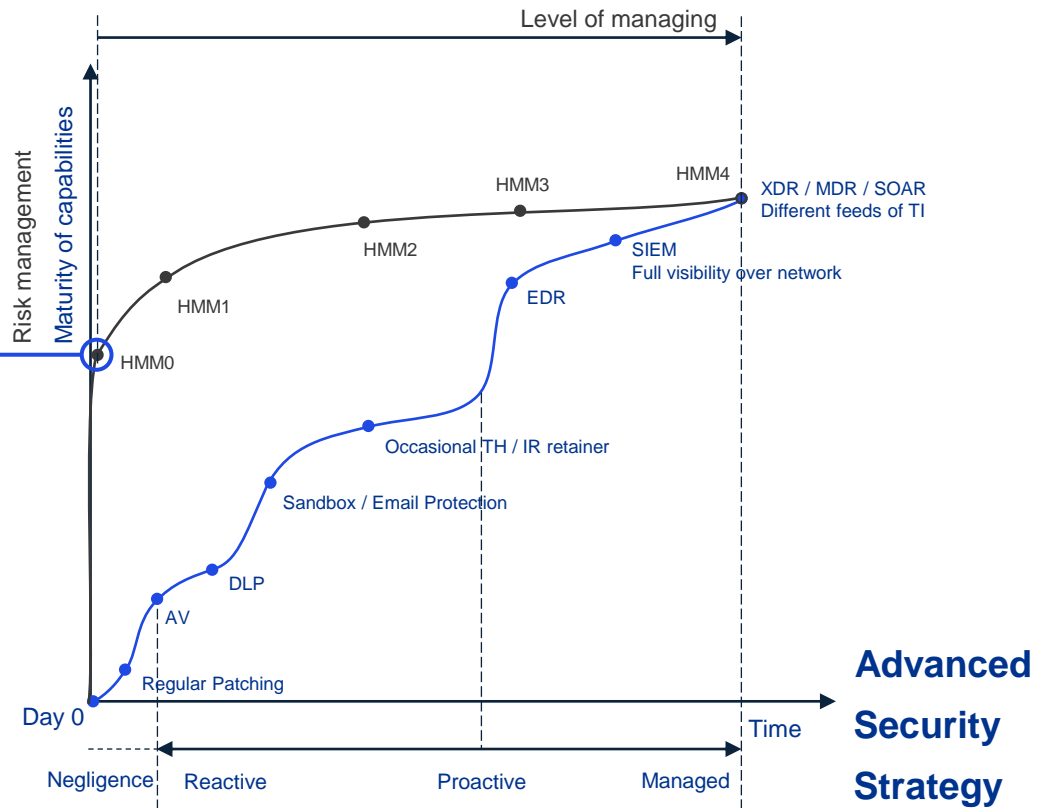


Apollo gives you the beacon of CTH

Or takes you on a journey

Apollo provides you with robust visibility and control over the network to manage risks, even before you've fully built out your security infrastructure.

It rapidly strengthens your security posture with a bespoke foundation tailored to your unique environment. Apollo also plans your full cybersecurity journey, ensuring your network isn't just secure now but fully prepared for what's to come — never leaving you in the dark.



Starting small, mature with us

Report

- Report on the result of each cycle

Apollo's core

Integration

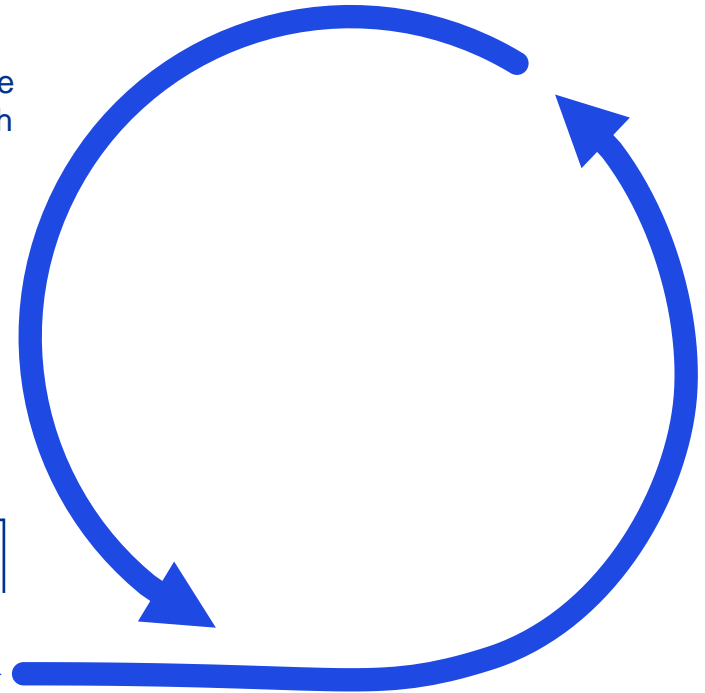
- Understanding of scope
- Setting up MSFT Sentinel

Fine-tuning

- Fine-tuning the set
- Report on the current state

Managed CTH

- Recurrent cycle of CTH
- Updating and maintain of the set



Traditional vs KPMG

A more effective solution

Traditional

Unpredictable costs, unpredictable outcomes

Product and niche company led service provider

Data logging off-prem via physical device

Struggle to analyze and prioritize threats

Reactive threat analysis, outsourced IR



Predictable, fixed outcome-based pricing

Scalable, on-demand access to security experts

Cloud native, 100% in the client tenant

Clear prioritization and remediation guidance based on MITRE

Proactive threat hunting, orchestrated in-house IR

Together, we're creating a trusted digital world, so you can push the limits of what's possible



Securing a protected world



Tailored managed services



Scalable outcomes



Best of human, best of tech

Are you ready to focus on your business's priorities?

Our team of leading cybersecurity experts will help you achieve the best possible outcome when threats are detected, allowing you to focus on what matters.





Contact us

Reach out to learn how we can support you on your cyber security compliance journey.

Eddie Toh

Partner

Cyber, Advisory

KPMG in Singapore

T: +65 6213 3028

E: eddietoh@kpmg.com.sg

[kpmg.com.sg](https://www.kpmg.com.sg)



The information contained herein is of a general nature and is not intended to address the circumstances of any particular individual or entity. Although we endeavor to provide accurate and timely information, there can be no guarantee that such information is accurate as of the date it is received or that it will continue to be accurate in the future. No one should act on such information without appropriate professional advice after a thorough examination of the particular situation.

The KPMG name and logo are trademarks used under license by the independent member firms of the KPMG global organization.

© 2024 KPMG Services Pte. Ltd. (Registration No: 200003956G), a Singapore incorporated company and a member firm of the KPMG global organization of independent member firms affiliated with KPMG International Limited, a private English company limited by guarantee. All rights reserved.

The KPMG name and logo are registered trademarks or trademarks of KPMG International.