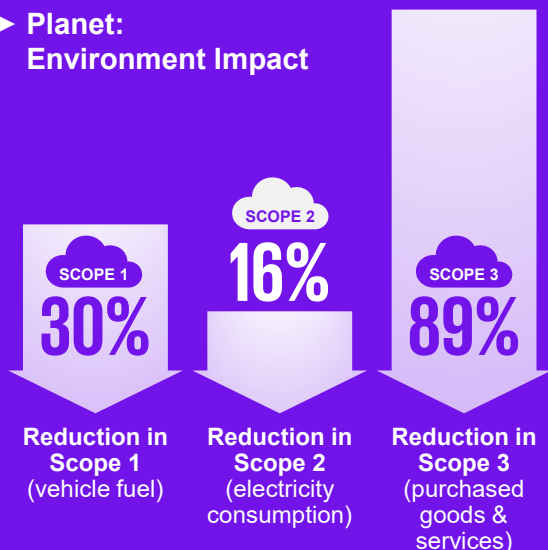


# Highlights

## ► Planet: Environment Impact



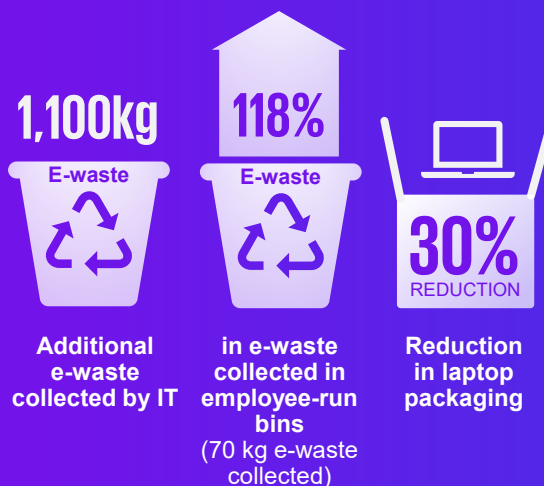
## ► People: Firmwide Key Drivers



## ► Tech & AI Integration



## ► Planet: Recycling Initiatives



## ► Value to Clients: ESG & Sustainability



- Sustainability strategy and reporting
- Carbon monitoring, reporting, and verification framework for Singapore
- ESG Impact assessments and Biodiversity risk assessments
- Greenhouse gas (GHG) accounting
- ESG reporting playbook launched with the Asia Pacific Real Assets Association (APREA) for the real assets sector
- ESG related training curriculums developed for institutes of higher learning
- ESG pre-assurance and assurance engagements

# Highlights

## ► Diversity: Gender Gap & Equality



**52%**

FEMALE LEADERSHIP

**38%**

FEMALE PARTNERS

- 52% of leadership roles held by women
- 38% of partners were female at the end of FY 24 (upward trend)



**1000 New Hires**  
in FY 24

- 57% Female
- 43% Male

## ► Formal Training and Learning



of such training  
per individual, an  
increase of 11.6%



tracked and certified  
for sustainability  
related learning

## ► Strong Community Contribution



total community  
investment



Increase of **36.7%**

## ► Governance

COMPLETED

**100%**

INTEGRITY TRAINING  
FIRM-WIDE

integrity training  
completion firm-  
wide in FY2024



WE DO WHAT  
IS RIGHT TRAINING

"We Do What Is  
Right" training  
conducted every year



ACRA PRACTICE  
MONITORING

Aligned with SSQM1 &  
SSQM2 and Accounting  
and Corporate  
Regulatory Authority's  
(ACRA) Practice  
Monitoring Programme