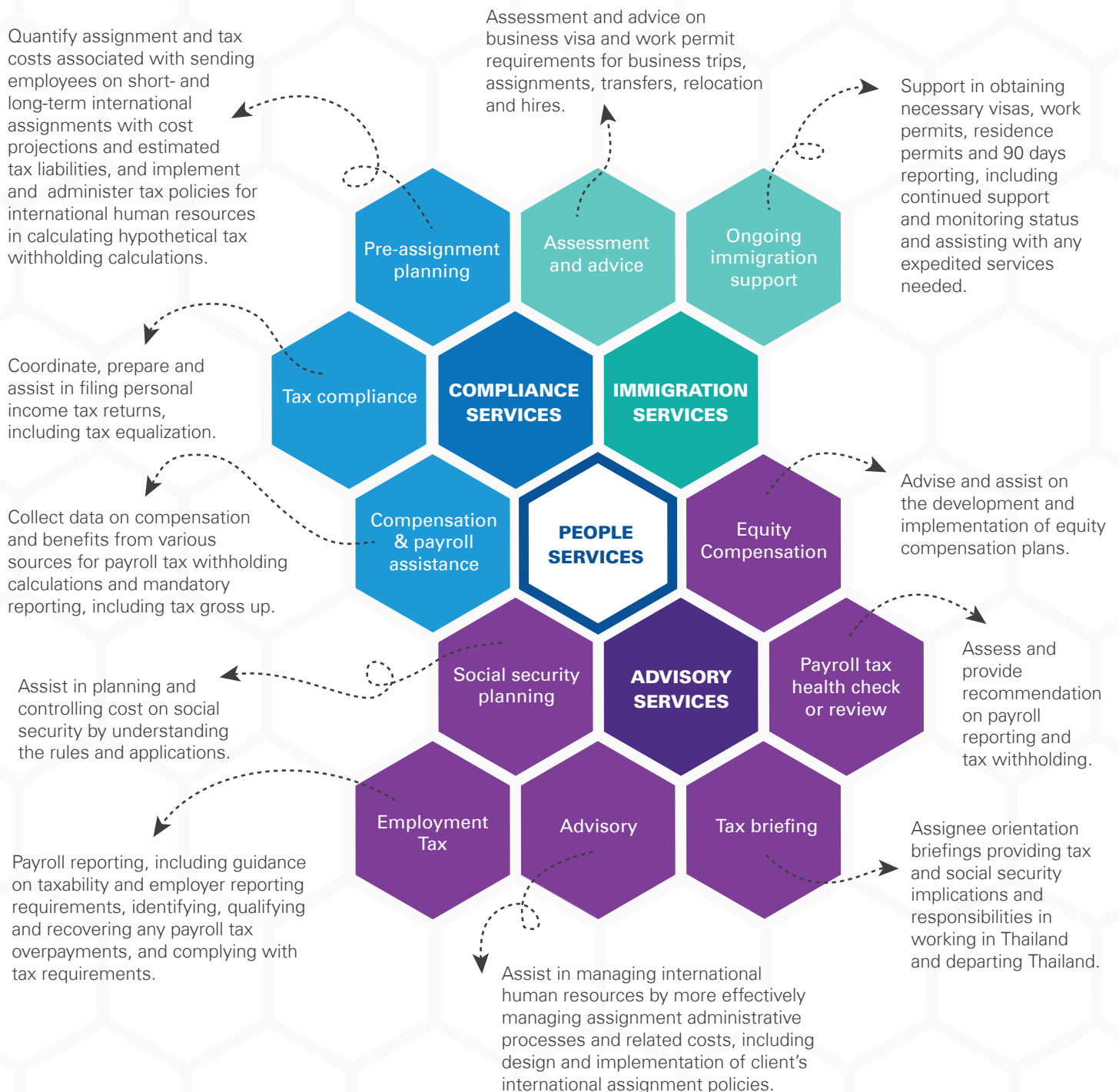




PEOPLE SERVICES at KPMG in Thailand is a dedicated practice in helping global and domestic companies better manage their workforce. When sending employees into or outside of Thailand on assignments, or considering acquisitions, mergers or downsizing, tax professionals at KPMG in Thailand provide proactive PEOPLE SERVICES covering tax, human resources and immigration advice, and compliance related matters affecting your workforce.

PEOPLE SERVICES





Contact us



Lynn Tastan

Partner

T: +66 2677 2477

E: ltastan@kpmg.co.th



Panisa Srihera

Associate Director, Tax

T: +66 2677 2544

E: panisa@kpmg.co.th



Sa-angluk Sarobol

Associate Director, Tax

T: +66 2677 2542

E: saangluk@kpmg.co.th



Tanittha Cha-Um

Associate Director, Immigration

T: +66 2677 2466

E: tanittha@kpmg.co.th



Wanpratueng Ramgomut

Associate Director, Immigration

T: +66 2677 2565

E: wanpratueng@kpmg.co.th

KPMG Phoomchai Tax Ltd.

49th Floor, Empire Tower,
1 South Sathorn Road,
Bangkok 10120
Tel: +66 2677 2000



www.kpmg.com/th

STAY CONNECTED



Twitter: @KPMG_TH

Facebook: facebook.com/KPMGinThailand

LinkedIn: linkedin.com/company/kpmg-thailand

© 2017 KPMG Phoomchai Tax Ltd., a Thai limited liability company and a member firm of the KPMG network of independent firms are affiliated with KPMG International Cooperative ("KPMG International"), a Swiss entity. All right reserved.

The KPMG name and logo are registered trademarks or trademarks of KPMG international.

The information contained herein is of a general nature and is not intended to address the circumstances of any particular individual or entity. Although we endeavor to provide accurate and timely information, there can be no guarantee that such information is accurate as of the date it is received or that it will continue to be accurate in the future. No one should act on information without appropriate professional advice after a thorough examination of the particular situation.