



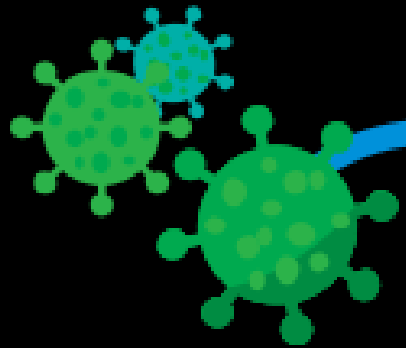
COVID-19-driven: Digital shift

29 May 2020

KPMG in Thailand



Preparing for the Future



Shock

What is happening?
Moving forward: Define the problem

Fear

Is everything going to be OK?
Moving forward: Creating a sense of comfort

Crisis Management

What do I take care of next?
Moving forward: Instilling trust and moving forward

Inaction

Doing nothing is ok. Inaction is part of the process.
Taking a moment: Recharge for a stronger outcome

Realization

How do I make a difference?
Regress vs. progress
Emerging from Inaction: Learning and adapting
Embracing Realization: Hit the restart button

Validation

How can I continue to do the right thing?
The first steps to actionable validation
Future ready mobility insight
Focusing on analytics

Engagement

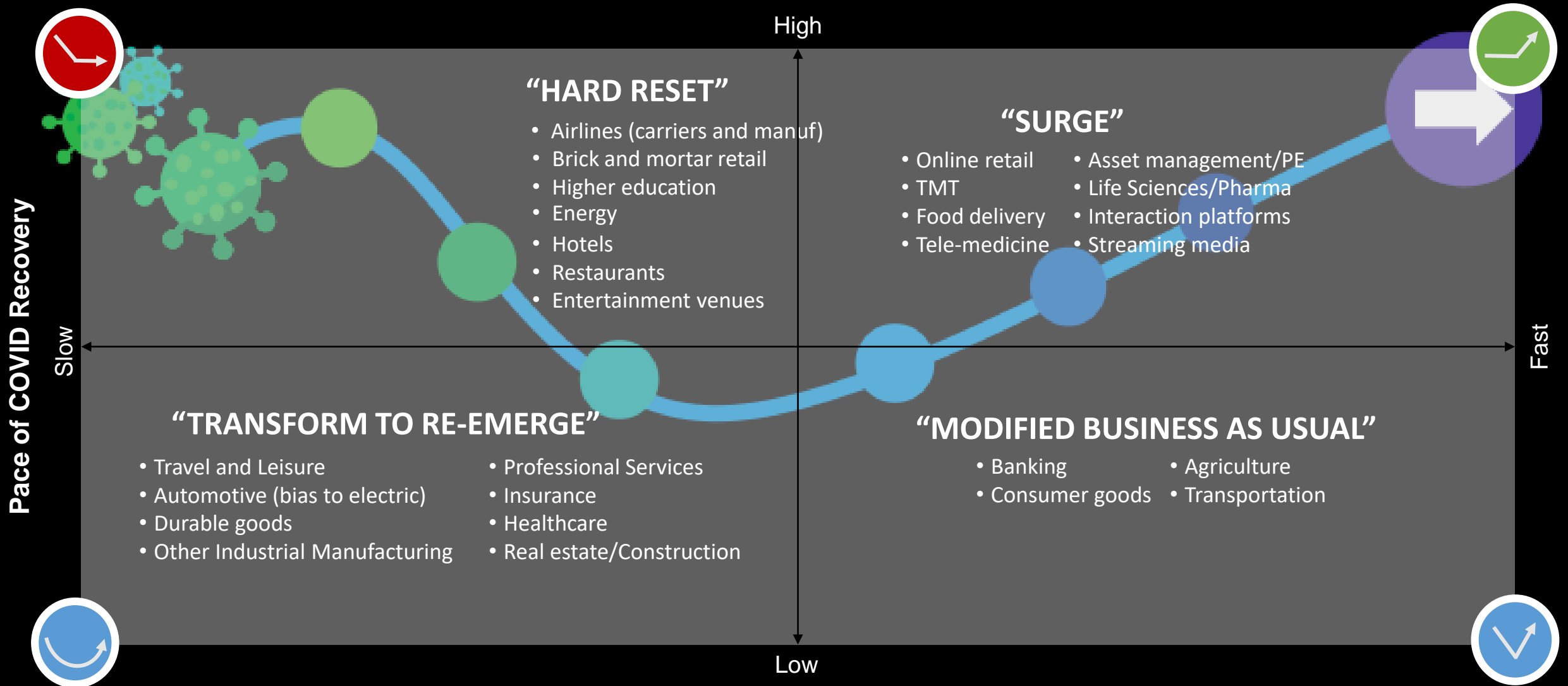
How can I continue to make a difference?
Continuing to learn and adapt

- Change for the better
- Reframe the value for the employee
- Prepare workers for the future: Collaboration and fulfillment

Emerge stronger



Preparing for the Future



Digital Minimalist

การใช้ Digital
ขั้นพื้นฐาน เพื่อเพิ่ม
ความคล่องตัว ใน
การทำงาน และ
สื่อสารกับลูกค้าใน
บางส่วนงาน



Collaboration tools and
Social Network

Digital Balancer

การใช้ Digital แบบ
ประยุกต์ ในหลาย
ส่วนเพื่อเพิ่ม
ประสิทธิภาพการ
ทำงานในองค์กรรวม
ขององค์กร



ERP Solution connected with
communication channel

Digital Extremem

การใช้ Digital
ขั้นสูง เพื่อสร้าง
รูปแบบธุรกิจ หรือ
Revenue Stream
ใหม่



Emerging Technology



Contact us



Siraporn Chulasatpakdy

CTO and Advisory Partner

T: +66 2 677 2678

E: siraporn@kpmg.co.th



Ruangsak Laiwetpitaya

Advisory Director

T: +66 2 677 2719

E: ruangsak@kpmg.co.th



Soraya Chaovanasoonthorpong

Advisory Director

T: +662 677 2752

E: sorayac@kpmg.co.th



home.kpmg/th



Twitter: @KPMG_TH

LinkedIn: linkedin.com/company/kpmg-thailand

Facebook: facebook.com/KPMGinThailand

YouTube: youtube.com/kpmginthailand

Instagram: Instagram.com/kpmgthailand

The information contained herein is of a general nature and is not intended to address the circumstances of any particular individual or entity. Although we endeavor to provide accurate and timely information, there can be no guarantee that such information is accurate as of the date it is received or that it will continue to be accurate in the future. No one should act on such information without appropriate professional advice after a thorough examination of the particular situation.

© 2020 KPMG Phoomchai Business Advisory Ltd., a Thailand limited liability company and a member firm of the KPMG network of independent member firms affiliated with KPMG International Cooperative, a Swiss entity. All rights reserved.

The KPMG name, logo are registered trademarks or trademarks of KPMG International.