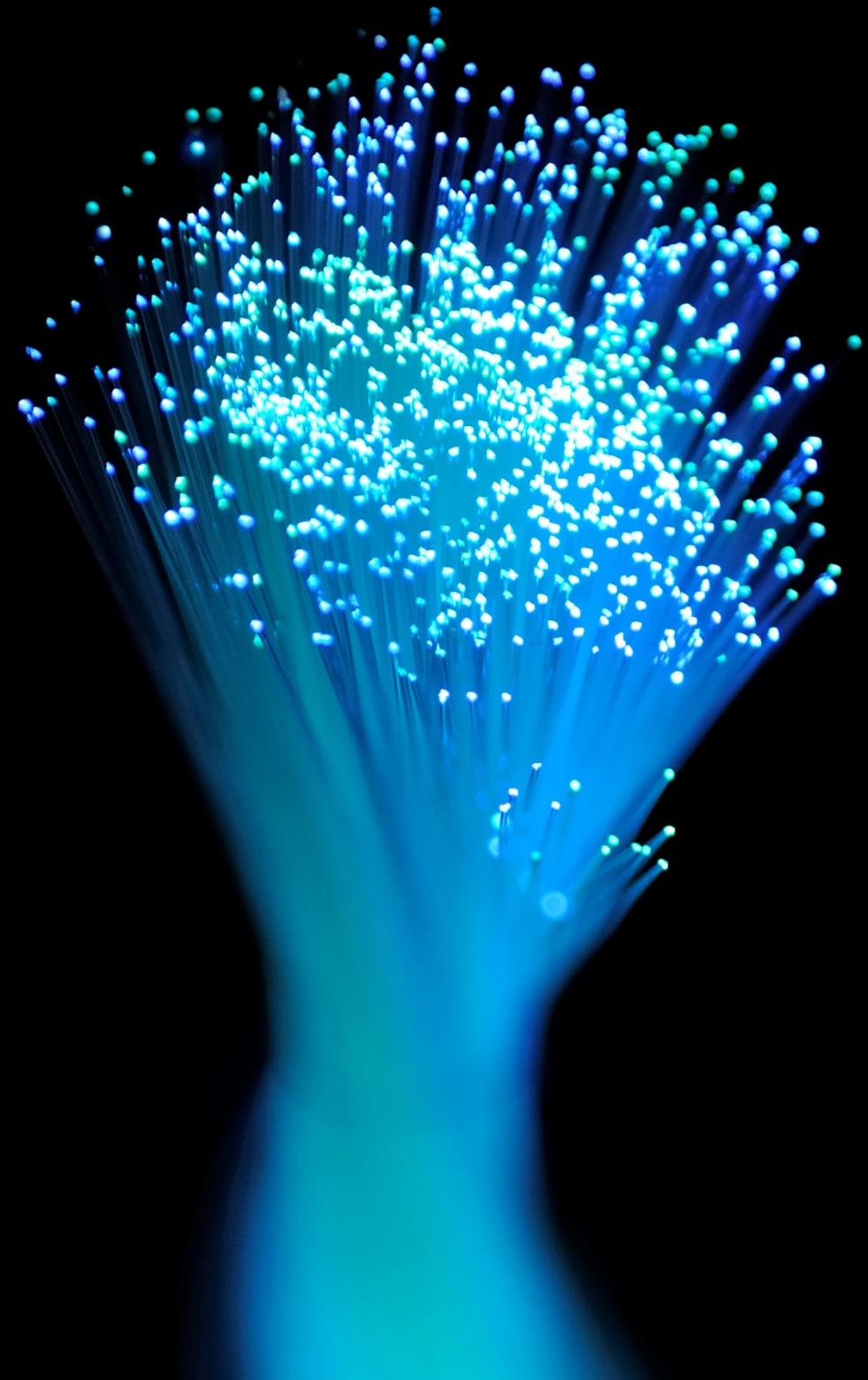




Forensic Technology & Electronic Discovery Services

KPMG Türkiye



Forensic Technology and Electronic Discovery Services

In investigation and litigation processes, it is frequently necessary to have quick access to data. Electronic discovery services are essential in internal investigations and judicial procedures since they are made to locate, secure, compile, scan, and quickly evaluate datasets. The data structure, regulatory requirements, and the systems where the data is stored are all considered during the discovery process. The following are commonly sought-after areas for electronic discovery services in the legal field:

- **White-Collar Crimes:** Collecting evidence related to suspicions of fraud, bribery, money laundering, and malpractice
- **Competition Law:** Collecting evidence related to bid rigging, unfair market/territory/customer sharing, obstructing competitors' activities/preventing new entrants, deceptive advertising, and pricing suspicions
- **IT Law:** Investigating system disruptions, tampering with data, unauthorized use of prohibited devices or programs, unauthorized sharing of personal data under Personal Data Protection Law (KVKK), security issues arising during data transfers and conducting cyber investigations into data breaches

If you encounter any of the situations mentioned above or a combination of them among your clients, we are ready to provide you with support through our experienced team of multidisciplinary experts.

Solutions Provided Within the Scope of Forensic Technology and Electronic Discovery Services

In the modern world, where interactions between individuals and legal entities have grown significantly, data size and complexity have also increased. Tracking financial and operational activities has become increasingly challenging.

As Forensic Technology and Electronic Discovery Services unit, we help our clients take preventative measures against any potential unauthorized or illegal activities that might take place within their company. We also assist in locating any previous incidents that have already occurred.

Electronic Discovery Services

Our team combines KPMG's globally recognized approaches to Forensic Technology and Electronic Discovery Services with customized state-of-the-art technology solutions to provide services tailored to the unique nature of each case.

Digital Document Reviews and Electronic Evidence Collection

Within the scope of Electronic Discovery Services, the examination can be carried out on many different devices and platforms:

- Laptop and desktop computers
- Smartphones
- Tablets
- SIM cards
- Corporate e-mail archives

Our Electronic Discovery Services team can conduct investigations on various data such as e-mail archives, chat correspondence, worksheets, video recordings, and audio

recordings obtained from all kinds of digital sources.

Cyber Threat and Incident Response

Cyber threats are actions that aim to damage the standard functioning of an organization's processes by accessing its systems or data without permission. These actions may take different forms, such as phishing and malicious software, from outside the company or from within the company-by-company officials. In this direction, KPMG detects data leakage and possible system vulnerabilities with its expert staff on cyber investigations. It applies many different examination methods for the detection of potential vulnerabilities and data leaks:

- Log analysis (data related to data leak prevention and detection systems such as EDR and DLP)
- RAM analysis
- Windows artifact analysis (Various data such as event logs, and system files)
- Analysis of Jumplist and .LNK files
- Malware analysis
- Hard disk investigation

Why Should You Choose KPMG in Forensic Technology?

Our team, which draws its strength from the KPMG brand possesses deep knowledge, experience, and cutting-edge software and latest hardware technology in Technology and Electronic Discovery.

Our team provided services to numerous companies across diverse sectors, combining analytical intelligence with multidisciplinary competence in interpreting findings. Our investigations utilize KPMG's globally accepted methods and are conducted in high-security forensic IT laboratories, ensuring the utmost safety of our customers' sensitive data.

Oytun Önder

Forensic Services

Partner

oonder@kpmg.com



Batuhan Tellioglu

Forensic Services

Director

btellioglu@kpmg.com



KPMG's Global-Scale Forensic Technology and Electronic Discovery Methodology

