



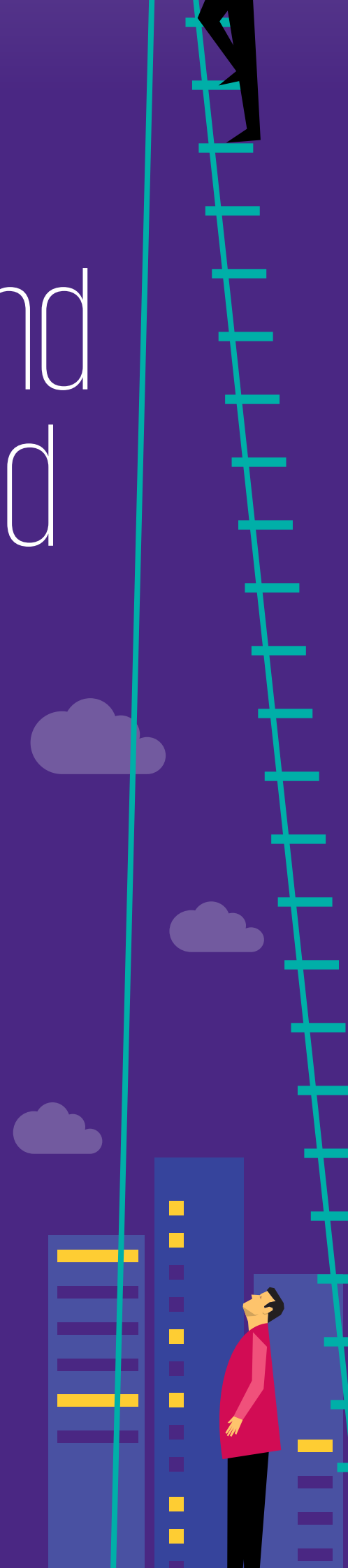
Forewarned and now forearmed

TIS for Brexit

KPMG's Indirect Tax Impact Assessment Tool

January 2017

kpmg.com/uk



Do you know which steps to take when preparing your company for Brexit?

A key area that we already know will be impacted by Brexit will be the movement of goods into and out of the UK and the additional costs which may be incurred post-Brexit on changes in Customs Duty and VAT. We have designed a tool to help you put some real numbers and detail around the potential impact of Brexit. We can also use the tool as the basis for providing you with an analysis of the different scenarios for a potential exit (EEA, Swiss option, no deal (WTO) etc.).

Brexit has given rise to a great deal of uncertainty for business, our tool helps to bring certainty in respect of Customs Duty and VAT.

Our Deliverable: Our team will use easily accessible data to produce a bespoke report setting out the key Customs Duty and VAT impacts from Brexit based on your actual data for the last 12 months. We will then meet with you to talk through the analysis and identify the matters which you should give priority.



Planning for Brexit

Our tool will help you to:

- Identify what supply chains will be impacted by Brexit
- Quantify the amount of increased duty post-Brexit
- Determine where your key areas of risk are and where you should be focusing any efforts to minimise that risk
- Understand what the impact looks like under the different exit 'options'



Supply Chain Visibility

The tool maps the flow of goods into and out of the UK giving clients greater visibility not only over what they are importing and to where, but what elements of the supply chain are most exposed to risk as a result of Brexit.



Interactive

The tool allows us to interrogate data from different angles, enabling us to focus on different issues for different clients. For example, if a client is focused on the loss of access to EU Free Trade Agreements, the tool allows us to isolate the data relevant to that issue.





For advice on how KPMG's tool
can work for you, or if you'd like a
demonstration please get in touch:



Bob Jones
Director, Trade and Customs
T +44 (0) 7802 844 650
E bob.jones@kpmg.co.uk



Matthew Fleming
Director, Legal Services
T +44 (0) 7825 120 312
E matthew.fleming@kpmg.co.uk



Claire Andrews
Senior Manager, Trade and Customs
T +44 (0) 7827 955 580
E claire.andrews@kpmg.co.uk



Rebecca Okuda
Senior Manager, Trade and Customs
T +44 (0) 7795 450 554
E rebecca.okuda@kpmg.co.uk

kpmg.com/uk

The information contained herein is of a general nature and is not intended to address the circumstances of any particular individual or entity. Although we endeavour to provide accurate and timely information, there can be no guarantee that such information is accurate as of the date it is received or that it will continue to be accurate in the future. No one should act on such information without appropriate professional advice after a thorough examination of the particular situation.

© 2017 KPMG LLP, a UK limited liability partnership and a member firm of the KPMG network of independent member firms affiliated with KPMG International Cooperative ("KPMG International"), a Swiss entity. All rights reserved.

The KPMG name and logo are registered trademarks or trademarks of KPMG International.

OLIVER for KPMG | CRT068891A | January 2017

