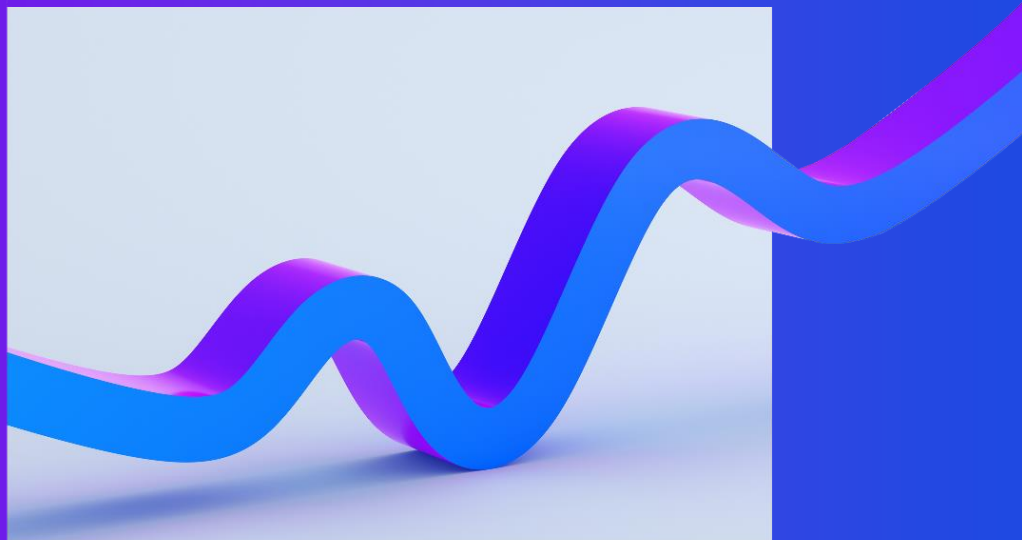




Time for change: Complex Project Ecosystem Assurance (CPEA)



Project assurance

How do we build back better, when an average of £114m is wasted for every £1bn spent on construction projects in the UK due to poor project performance?

Between 45-50% of construction projects are already not delivered on time or within budget and projects are only becoming ever more complex.

Traditional project assurance methods are quickly losing relevance in a world of increasing diverse work packages, higher digital dependence, more intricate asset-people interfaces and increased corporate responsibility demands.

Deliver dynamic progress

What if you could set your sights on better outcomes and ensure sustainable, powerful progress whatever the complexity of a project?

At KPMG, we have developed a market-leading, proven **Complex Project Ecosystem Assurance (CPEA)** model that works across all sectors, is scalable and based on real insights.

Designed to match the systems-based nature of today's and tomorrow's projects, it gives project owners, financiers, investors, delivery teams and end-users the tools, integrated intelligence and confidence to deliver benefits on schedule and on budget.

How does CPEA work?

The Complex Project Ecosystem Assurance (CPEA) model uses three lenses to plan and execute world-class assurance

1. Lifecycle Stage

Contextualises project performance, objectives and delivery strategy.. This stage uses intelligence and data from other projects that have progressed through these stages.

2. Ecosystem Components

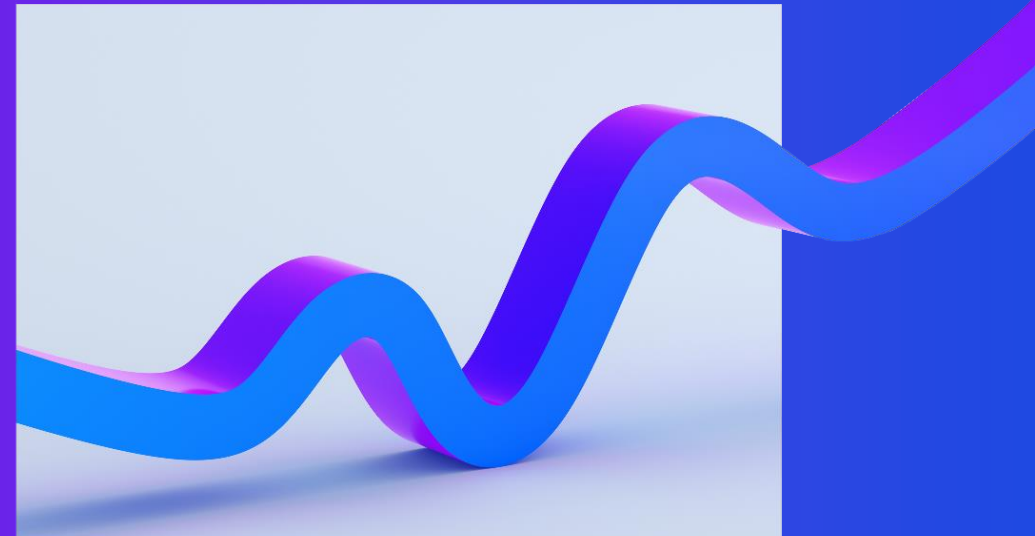
Provides an assurable holistic and whole project framework, relevant in all Lifecycle Stages and across all sectors and project typologies.

3. Assurance Tools

Provides efficient and integrated project health scanning, symptom checking, diagnosis and intervention planning & evaluation. Use is guided by Stage and Components.

What does this mean for projects?

- Control processes are designed and operated with the level of integration a complex projects with many interfaces demands
- Project assurance frameworks are designed effectively from the start giving leadership the management intelligence they need
- Operational readiness is considered at the right time avoiding compromises in time, cost and quality in the capital and operational organisations
- Leadership and management have increased capacity to focus on the big picture, not distracted by fire fighting



Complex Project Ecosystem Assurance



System Health

Comprehensiveness, efficiency and effectiveness of the full project system.



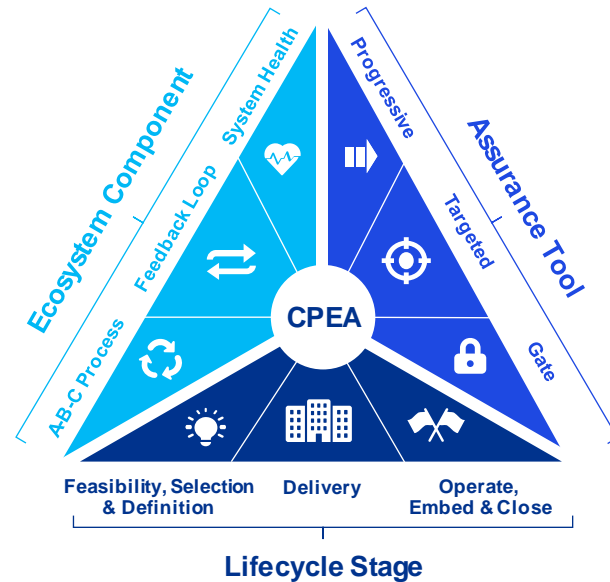
Feedback Loop

How work is delegated to create informed and aligned packages; how issues are escalated expeditiously; and how work packages are integrated with other packages.



A-B-C Process

The project's fundamental processes of performing work, monitoring that performance, and undertaking corrective action. These underpin each individual work package.



Progressive Assurance

Continuous monitoring and evaluation of performance, providing objective assessment of the delivery context and identifying areas of concern for other action (including Targeted Assurance).



Targeted Assurance

Specific and focussed activity to deep-dive into areas of concern. Subject matter experts are brought in to diagnose and identify treatment options.



Gate Assurance

Pre-determined Go/No-Go control gates, where progression onto the next delivery stages is permissible only on satisfactory compliance with criteria.

Contact our experts



Richard Powell

Partner, Infrastructure
Advisory Group
KPMG in the UK
richardfa.powell@kpmg.co.uk



Joe Manning

Director, Infrastructure
Advisory Group
KPMG in the UK
joe.manning@kpmg.co.uk



Liam Hewitt

Manager, Infrastructure
Advisory Group
KPMG in the UK
liam.hewitt@kpmg.co.uk



Holly Davis

Associate Director,
Infrastructure Advisory Group
KPMG in the UK
holly.davis@kpmg.co.uk