

# ICS Intelligence Function

**KPMG point of view**

November 2022

## What is an Intelligent Function?

An Intelligence Function is a well-structured multidisciplinary team from across the ICS organisations working together to support informed decision making and a Population Health Management (PHM)-based approach to planning and delivering care. Its purpose is to ensure that ICS decisions are routinely informed by evidence that is tailored to the local context, including a detailed understanding of health inequalities between population groups.

By bringing together the combined strength and diverse expertise of the ICS organisations, including NHS Providers, Local Authority care services, public health teams and voluntary sector partners, the work of the Intelligence Function is based on a comprehensive understanding of the local population, essential for the first stage of the PHM cycle, but also the other stages that depend on this understanding.

## What are the benefits of an Intelligence Function?

The primary benefit of an Intelligence Function is the provision of actionable insight to support leaders across an ICS in making better, data-driven, and evidence-based decisions. This enables leaders to have more insight about their populations to identify their needs and deliver targeted services and interventions, leading to more effective use of resources, as well as better outcomes and experience for patients.

Leaders also have the insight to focus on cohorts of the population experiencing greater health and care inequalities, allowing them to tackle these inequalities and support broader social and economic development. In other words, the key objectives of an ICS.

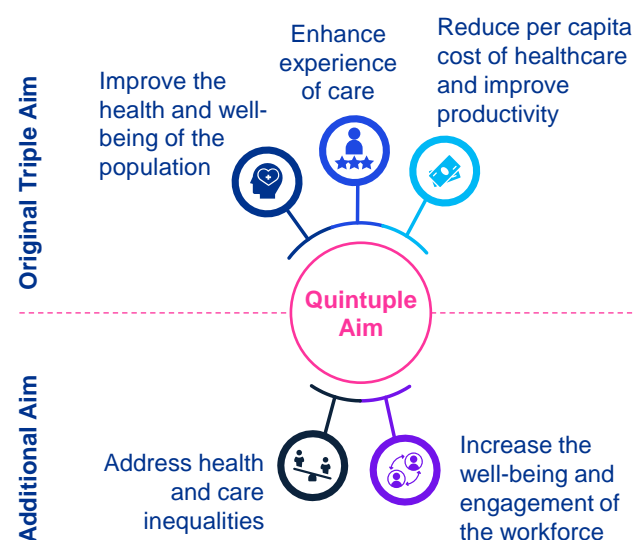
Additionally, an Intelligence Function would provide the appropriate data sharing to promote research and foster collaboration with academia and private sector.

## Background

Integrated Care Boards (ICBs) were established as statutory bodies in July 2022. An ICB brings the NHS together across an Integrated Care System (ICS) to improve population health and establish shared strategic priorities within the NHS. The purpose of ICSs according to NHS England is to bring partner organisations together to:

- Improve outcomes in population health and healthcare
- Tackle inequalities in outcomes, experience and access
- Enhance productivity and value for money
- Help the NHS support broader social and economic development

ICSs can achieve this through population health management (PHM) and its quintuple aim, which is aligned almost perfectly, as shown in NHS England<sup>(a)</sup>'s diagram below.



Note: (a) [PowerPoint Presentation \(imperialcollegehealthpartners.com\)](#)

PHM is achieved through a cycle of continuous improvement, where:

The health needs of a population are assessed

Groups with similar needs are identified (segmentation and stratification)

Appropriate interventions are designed and implemented

Outcomes are monitored and evaluated

Successful interventions are scaled and incentivised while unsuccessful ones are stopped

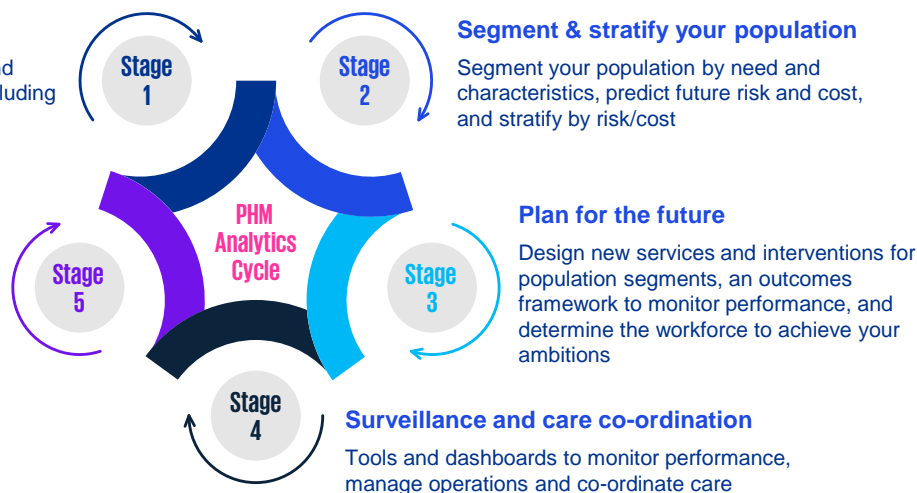
## PHM analytics cycle

### Understand your population

Understand and assess the needs and characteristics of your population, including health inequalities

### Evaluate performance

Evaluate the effectiveness of your new services and interventions



Data and analytics are intrinsic to every step in this process and are used to effectively shepherd resources. It is therefore critical that each ICS has an Intelligence Function to enable this.

## What foundations are needed?

An Intelligence Function needs to have the following foundations to support the ICS in delivering PHM, alongside a co-developed and prioritised plan that builds on the positives and has demonstrable quick wins.

### Systems to lay the groundwork

- Infrastructure to collect, store and curate data
- Governance and data management
- Self service functionality
- Tools and dashboards to monitor outcomes & performance

### Data to surface the key insights

- Linked datasets that provide a single source of truth
- Segmented and risk stratified
- Automated processes to free up analysts to do more strategic work
- Trust in the data

### Skills – to extract insights and take action

- Statistics and advanced analytics
- Population Health Management core concepts including intervention planning and evaluation
- A multidisciplinary approach to problem solving and a shift in mindset moving away from restrictive task-based thinking
- Data literacy to enable clinicians to make decisions based on data
- User-centred design of PHM products and services

## How can we help?

We can help with systems, data and skills. We have developed an Analytics Learning Programme that gives attendees a holistic view of analytics and introduces innovative approaches and real-world problem-solving skills. Learning is provided via live interactive classrooms and hands on technical labs making an immersive and applied experience. The programme is aligned to national competency frameworks, to improve the technical and non-technical skills of the analytics and intelligence workforce.

We also work alongside our clients to:

- Set up system-wide Intelligence Functions or analytical Centres of Excellence
- Assess their BI capabilities and the maturity of their PHM function
- Develop a data strategy and roadmap, and provide implementation support including fostering a data culture, and establishing best-practice data management
- Design and implement cloud-based data platforms and intelligence products in line with the latest technologies





### **Tom Binstead**

Head of Population Health Analytics  
tom.binstead@kpmg.co.uk

Tom is a statistician by background and an expert in population health analytics, with 22+ years of experience working in healthcare data and analytics, including 16 years developing and delivering population health solutions for the NHS. Tom holds a diploma in Health Information Science and a degree in Mathematical Statistics & Operational Research



### **Dr Janak Gunatilleke**

Head of healthcare data and analytics  
janak.gunatilleke@kpmg.co.uk

Janak a qualified doctor with 17 years of healthcare experience across digital health, health data, programme management, and healthcare operations. Janak holds an executive MBA and a master's degree in data science, Technology & Innovation.

[kpmg.com/uk](https://kpmg.com/uk)



The information contained herein is of a general nature and is not intended to address the circumstances of any particular individual or entity. Although we endeavour to provide accurate and timely information, there can be no guarantee that such information is accurate as of the date it is received or that it will continue to be accurate in the future. No one should act on such information without appropriate professional advice after a thorough examination of the particular situation.

© 2023 KPMG LLP, a UK limited liability partnership and a member firm of the KPMG global organisation of independent member firms affiliated with KPMG International Limited, a private English company limited by guarantee. All rights reserved.

The KPMG name and logo are trademarks used under license by the independent member firms of the KPMG global organisation.

**Document Classification: KPMG Confidential**

CREATE: CRT145730A