

ITAM Tooling Support

Take your ITAM solution to the next level...

An IT Asset Management (ITAM) tool is a powerful way to automate the management of technology assets and to drive efficiency but, without careful configuration and continuing management, it can be hard to ensure that your solution is complete and accurate. We provide highly experienced ITAM practitioners capable of developing and maintaining your tool to accelerate time to value.

The role of ITAM Tools...

ITAM involves using financial, contractual, and inventory, data to track IT assets and make smart decisions about their future use. ITAM helps organisations know which IT resources are being used and whether that use is as efficient and effective as possible. An important role for ITAM, then, is understanding the total cost of ownership and finding ways to optimize that cost. ITAM can help optimise costs by identifying whether the assets in use are needed and rightsized.

In large organisations it is virtually impossible to effectively manage IT assets without a specialised tool. ITAM tools help reduce the overall cost of running an ITAM capability by reducing the overhead of gathering and analysing data and by introducing volume analytics that human practitioners cannot easily perform: for example, metering software usage or simulating alternative architectural scenarios.

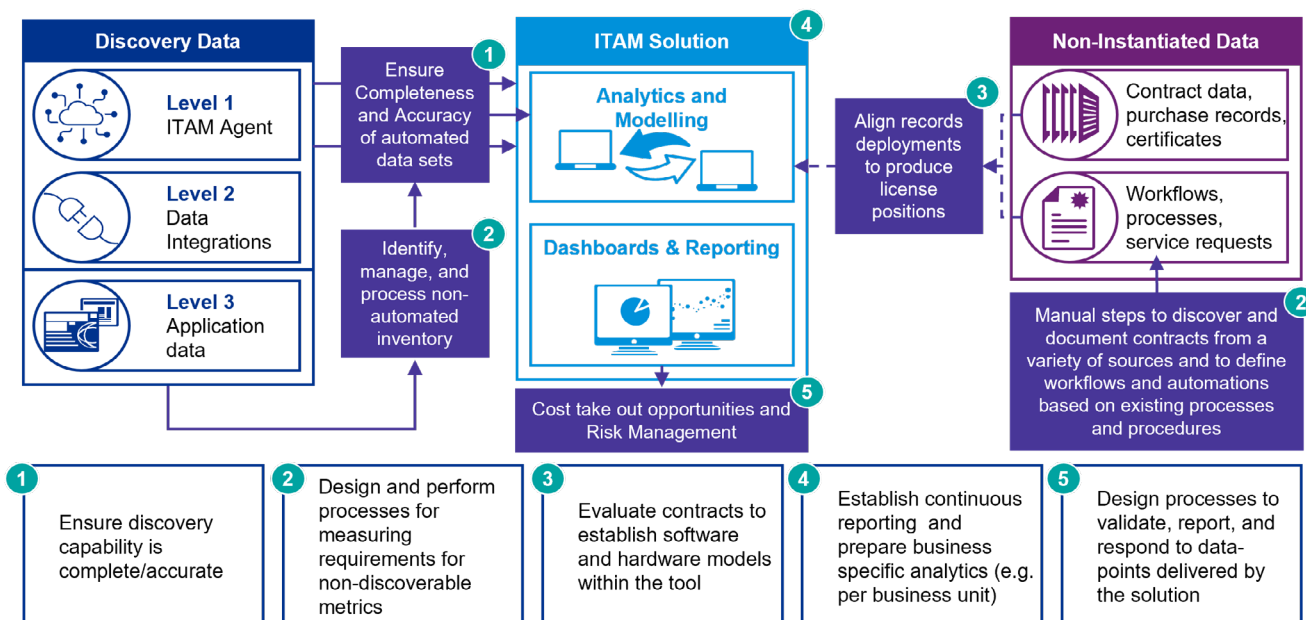
ITAM tools can serve a variety of purposes, for example: automated detection of assets, software license management, version and patch management, or request management.

...and how to level up

Hybrid IT environments - composed of software, hardware and cloud solutions from a multitude of providers - are increasingly challenging to manage. How can you confidently manage your IT environment if you don't understand what you have, where, or how its used? We help our clients drive value from their ITAM tooling by:

- Ensuring the current System Configuration is aligned to the IT landscape and to business needs
- Ensuring that Data Integrations remain fit for purpose and deliver complete and accurate data to the ITAM tool
- Enabling advanced analytics to reduce cost and risk of software licensing
- Using accurate information to calculate future demand
- Identifying? software vulnerable to exploitation, for example aging, unpatched, and end of life, deployments
- Improving? business continuity procedures though knowledge of specific machine builds and inter-dependencies

A tailored, step by step, approach:



Get real value from you ITAM tooling

Most ITAM tools offer targeted solutions for managing the software major publishers like Microsoft, IBM, Oracle, and SAP. But, these features can require specialist licensing knowledge to properly interpret and take advantage of.

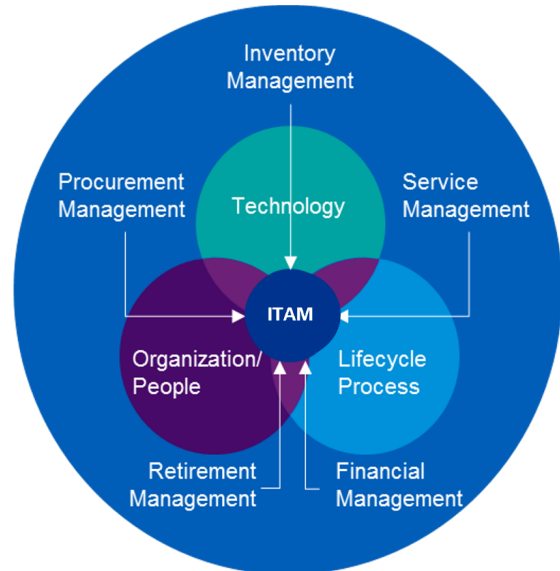
At its core, ITAM is all about data. The information that a mature ITAM program creates, enriches, and maintains, across the lifecycle process is a fuel to power a business and exposes opportunities from a financial and contractual perspective as well as enabling other areas like ITSM and DR / BC through alignment to the CMDB:

KPMG specialises in making sure you get value from your ITAM tooling investment.

Technology is constantly evolving and your ITAM system needs to stay abreast of the latest technologies available to your organisation. We can help you need to develop integrations for bespoke integrations or to adopt latest solutions – like moving from SCCM to Intune. Similarly we can help you improve supporting tools and prevent data errors in your inventory tools from proliferated into your ITAM system.

We help our clients configure ITAM tools for a range of environment specific levers and dials. For example, have set your tool to scan all of the necessary file locations on your machines? How are you incorporating meta data like production status or lifecycle status? Are you effectively triaging error messages that the system presents?

KPMG's ITAM Framework



Things to think about

	Yes	No
Do you have tooling that provides "Trustworthy" data for all of your strategic IT Assets?		
Are your software licence entitlements collated and clearly documented in a single repository?		
Do your current processes and controls for prevent wasted expense and reduces compliance risk?		
Are you able to align licensing of perpetual 'on-premise' software with related 'Cloud' bring your own license?		
Have you established supporting license management for Software as a Service alongside your perpetual licenses?		

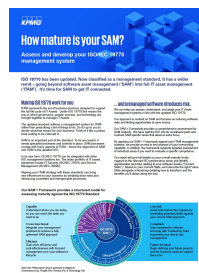
Did you respond 'no' to any of these questions? Would you like to turn them into 'yes'?

Our ITAM tooling support services are just one part of a larger portfolio of services designed to help you connect capabilities across your IT and business functions. Our expert consultants are on hand now to help you achieve and exceed your ambitions. Get in touch to discuss more ways we can support your journey, such as:



SAM as a Service

Software is a major part of IT spend, but it's difficult to track and manage. KPMG has teamed up with Flexera to provide a transformative, end to end, SAM managed service that combines Flexera's market leading tooling for technology asset management and KPMG's expertise in software licencing.



SAM Maturity Assessment

ISO 19770 has been updated. Now classified as a management standard, it has a wider remit – going beyond software asset management ('SAM') into full IT asset management ('ITAM'). We can help you assess, understand, and adapt your IT management systems in line with the updated ISO 19770.



kpmg.com/uk

Some or all of the services described herein may not be permissible for KPMG audited entities and their affiliates or related entities. The information contained herein is of a general nature and is not intended to address the circumstances of any particular individual or entity. Although we endeavour to provide accurate and timely information, there can be no guarantee that such information is accurate as of the date it is received or that it will continue to be accurate in the future. No one should act on such information without appropriate professional advice after a thorough examination of the particular situation.

© 2023 KPMG LLP, a UK limited liability partnership and a member firm of the KPMG global organisation of independent member firms affiliated with KPMG International Limited, a private English company limited by guarantee. All rights reserved. The KPMG name and logo are trademarks used under license by the independent member firms of the KPMG global organisation.