



Accounting Advisory Services

Accounting Advisory Services – what we do

Greg Stinson
Lead Partner, Head of AAS
greg.stinson3@kpmg.co.uk



Kelly Martin
kelly.martin@kpmg.co.uk



Deals

- Acquisition accounting/ PPA
- Diligence
- Deal structuring
- Model reviews
- Carve outs
- Post deal support
- IPO support



Sarah Hughes
sarah.hughes@kpmg.co.uk



Group Reorgs

- Restructurings
- Entity rationalisations & group optimisation
- Distributable reserves analysis (BEIS)
- Accounting for intra-group transactions
- Cash extraction



Ian Greenwood
ian.greenwood@kpmg.co.uk



On Call Accounting

- Ad-hoc technical advisory
- Implementing new standards
- Secondments
- Preparation of accounts & policy manuals
- Topical & tailored trainings
- US GAAP

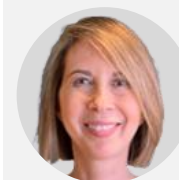


Danny Clark
danny.clark@kpmg.co.uk



Insurance

- IFRS 17 implementation and readiness
- Industry-specific reporting transformation advisory
- Advisory services on insurance regulations
- Accounting support



Hilary Eastman
hilary.eastman@kpmg.co.uk



ESG Reporting

- ESG framework advisory and training
- Guidance on climate accounting annual report
- TCFD disclosures
- SECR reporting
- ESG data quality

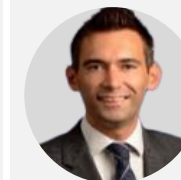


Manisha Santchurn
manisha.santchurn@kpmg.co.uk



Corporate Reporting

- Advice on annual reports
- GAAP conversion
- First-time listing support
- Change in reporting framework
- Disclosures
- Regulatory impacts on accounts (BEIS)

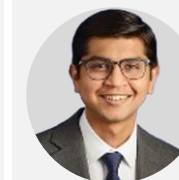


Stewart Hagell
stewart.hagell@kpmg.co.uk



Treasury

- Treasury transformation
- Hedge accounting
- Treasury documentation
- Cash management & TMS systems selection
- Powered Treasury architects



Pratik Vora
pratik.vora@kpmg.co.uk



Transformation

- IFRS in ERP implementations
- Powered Accounting
- Accounting assistance for systems & processes
- Digital, Finance, & Internal Controls transformation
- Last mile reporting & recon implementation (Workiva, Blackline)

Sector Leads

Energy and
natural
resources



Kelly Martin
kelly.martin@kpmg.co.uk

Consumer
markets



Ian Greenwood
ian.greenwood@kpmg.co.uk

Telco,
media and
technology



Greg Stinson
greg.stinson3@kpmg.co.uk

Transport



Steve Creasy
steve.creasy@kpmg.co.uk

Private
Equity



Insurance



Danny Clark
danny.clark@kpmg.co.uk

Healthcare
and life
sciences



Greg Stinson
greg.stinson3@kpmg.co.uk

Defence &
manufacturing



Simon Cooper
(Head of Regions)
simon.cooper@kpmg.co.uk

Business
services



Sarah Hughes
sarah.hughes@kpmg.co.uk

Infrastructure,
building, and
construction



Ian Greenwood
ian.greenwood@kpmg.co.uk

Leisure



Brendon Stansfield
brendon.stansfield@kpmg.co.uk

AAS Regional Footprint

Greg Stinson
Partner, AAS Head of Regions
simon.cooper@kpmg.co.uk



Location	Office Lead
Aberdeen	Kelly Martin (Kelly.Martin@kpmg.co.uk) Nana Yaw Owusu (NanaYaw.Owusu@kpmg.co.uk)
Glasgow & Edinburgh ('The Central Belt')	Brendon Stansfield (Brendon.Stansfield@KPMG.co.uk) Heenali Shah (Heenali.Shah@kpmg.co.uk)
Manchester & Liverpool ('NW')	Simon Cooper (Simon.Cooper@KPMG.co.uk) Natalie Hall (Natalie.Hall@kpmg.co.uk)
Leeds & Newcastle ('NE')	Simon Cooper (Simon.Cooper@KPMG.co.uk) Natalie Hall (Natalie.Hall@kpmg.co.uk) Faizan Khan (Faizan.Khan@kpmg.co.uk)
The Midlands	Simon Cooper (Simon.Cooper@KPMG.co.uk) Faizan Khan (Faizan.Khan@kpmg.co.uk)
Cardiff, Bristol & Plymouth ('SW')	Simon Cooper (Simon.Cooper@KPMG.co.uk) Shuk Fan Chan (Shuk.Chan@KPMG.co.uk)
Reading & Southampton ('South')	Simon Cooper (Simon.Cooper@KPMG.co.uk) Jayesh Gajare (Jayesh.Gajare@kpmg.co.uk) Joe Kalloushi (Joseph.Kalloushi@kpmg.co.uk)
London Regions	Sarah Hughes (Sarah.Hughes@KPMG.co.uk) Ian Greenwood (Ian.Greenwood@KPMG.co.uk) <ul style="list-style-type: none"> MK: Brendon Stansfield (Brendon.Stansfield@KPMG.co.uk) Watford: Danny Clark (Danny.Clark@KPMG.co.uk) Cambridge/Norwich: Greg Stinson (Greg.Stinson3@kpmg.co.uk) Gatwick: Rebecca Wilson (Rebecca.Wilson@KPMG.co.uk)



Some or all of the services described herein may not be permissible for KPMG audited entities and their affiliates or related entities.



kpmg.com/uk

The information contained herein is of a general nature and is not intended to address the circumstances of any particular individual or entity. Although we endeavour to provide accurate and timely information, there can be no guarantee that such information is accurate as of the date it is received or that it will continue to be accurate in the future. No one should act on such information without appropriate professional advice after a thorough examination of the particular situation.

© 2023 KPMG LLP, a UK limited liability partnership and a member firm of the KPMG global organisation of independent member firms affiliated with KPMG International Limited, a private English company limited by guarantee. All rights reserved.

The KPMG name and logo are trademarks used under license by the independent member firms of the KPMG global organisation.

Document Classification: KPMG Public

CREATE: CRT152875A | November 2023