

# Disputes, litigation, and expert valuations



## Valuating a complex business environment

The rapid globalisation of the world economy amongst other factors has created both opportunities and challenges for organisations. Operating in multiple jurisdictions, gaining access to economies at different stages of development, and understanding cultural differences are all adding new complexities to the business agenda. At the same time, the business environment is becoming increasingly litigious and investors are increasingly seeking growth through joint ventures and partnerships.

Therefore, there has been a rapid increase in both the number and the complexity of commercial disputes. In almost every commercial dispute, it is the valuation of certain assets –or the value of the business itself –that is often the greatest point of contention between parties. As a result, many organisations are now seeking robust and well-reasoned valuation analysis prepared by appropriately qualified and independent specialists, to help them better prepare for pending or potential disputes.

Our expert valuations team brings an in-depth understanding of commercial valuations, and is able to draw on our forensic accounting specialists where required. We have extensive experience of producing well-reasoned valuation analysis and real-world deal advice to deliver robust and reliable valuation opinions.

## Products/services

**Our strong network of valuation experts across sector specialisms and geographies enables us to deliver robust and reliable expert valuation opinions, including through an expert advisory role. The key areas we can assist throughout the dispute and litigation process are:**



### Independent expert determinations

When acting as the expert, we have a tried and tested process that is both fair and transparent.

- A robust and objective valuation opinion;
- Reduced likelihood of the opinion being challenged, providing closure to both parties.



### Expert witness services

We have extensive experience of providing expert witness evidence across a range of dispute resolution processes. In addition, we can offer a combination of technical forensic accounting and valuation expertise, and real-world deal experience.

- Understanding of and adherence to the requirements of a range of dispute resolution processes;
- A more credible expert who can draw on and quote experience of advising Boards, investors and other stakeholders on pricing and valuation;
- A robust combination of technical forensic accounting and valuation expertise.



### Expert advisory services

We can also perform an advisory role, ranging from assistance with the drafting of valuation clauses in shareholder agreements, through to supporting with the selection of experts and preparation of submissions.

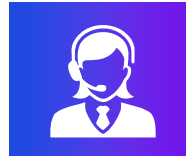
- Ability to draw on KPMG's global experience and expertise to bring credibility to your submissions to the appointed expert;
- Ability to leverage our tried and tested process to assist you with agreeing the scope and nature of the appointed experts role;
- Providing guidance and support through what can be a complex and challenging process.



## Key issues to be considered

There are many factors impacting valuations in a commercial dispute or litigation setting. KPMG brings practical real-world support to address complexities you may be facing around:

- 01 **Basis and date of valuation, and use of hindsight**
- 02 Selecting an **appropriate valuation methodology** that reflects the real-world deal environment
- 03 Ensuring a **fair and unbiased process**
- 04 Consideration of **control premiums and minority discounts**
- 05 **Nuisance value**
- 06 Realistic and viable **buyer universe**
- 07 Restrictions or requirements set out under **shareholder agreements, articles of association or other legal agreements**



## Triggers – when to call us

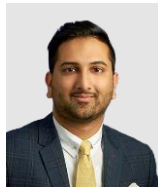
There are numerous potential triggers for valuation support, and KPMG can support you throughout the dispute and litigation process under the following, amongst other, situations:

- ? Does the dispute involve an exiting shareholder or partner?
- ? Could the dispute result in the transfer of assets?
- ? Has the dispute been triggered by investment/divestment activity?
- ? Are you seeking a settlement to a matrimonial dispute?
- ? Does the dispute relate to a compulsory purchase order?
- ? Are you drafting a valuation clause in a shareholder, partnership or other agreement?
- ? Is your quantum case linked to the value of an asset or business?
- ? Are you contemplating a transaction or transfer of assets which could be challenged in the future?

## Connect with us



**Caroline Bott**  
**Partner** - Transaction Advisory Services,  
Valuations  
KPMG in the UK  
T: +44 (0)7717 301790  
E: [caroline.bott@kpmg.co.uk](mailto:caroline.bott@kpmg.co.uk)



**Farhaz Magan**  
**Partner** - Transaction Advisory Services,  
Valuations  
KPMG in the UK  
T: +44 (0)7818 588576  
E: [farhaz.magan@kpmg.co.uk](mailto:farhaz.magan@kpmg.co.uk)



**Lyuda Sokolova**  
**Partner** - Transaction Advisory Services,  
Valuations  
KPMG in the UK  
T: +44 (0)7974 308598  
E: [lyudmila.sokolova@kpmg.co.uk](mailto:lyudmila.sokolova@kpmg.co.uk)

[kpmg.com/uk](https://www.kpmg.com/uk)



The information contained herein is of a general nature and is not intended to address the circumstances of any particular individual or entity. Although we endeavour to provide accurate and timely information, there can be no guarantee that such information is accurate as of the date it is received or that it will continue to be accurate in the future. No one should act on such information without appropriate professional advice after a thorough examination of the particular situation.

KPMG Law is part of KPMG LLP, a multi-disciplinary practice authorised and regulated by the Solicitors Regulation Authority. SRA ID: 615423. For full details of our professional regulation please refer to 'Regulatory information' under 'About' at [www.kpmg.com/uk](https://www.kpmg.com/uk)

© 2024 KPMG LLP, a UK limited liability partnership and a member firm of the KPMG global organisation of independent member firms affiliated with KPMG International Limited, a private English company limited by guarantee. All rights reserved.

The KPMG name and logo are trademarks used under license by the independent member firms of the KPMG global organisation.

CREATE: CRT157360A | August 2024