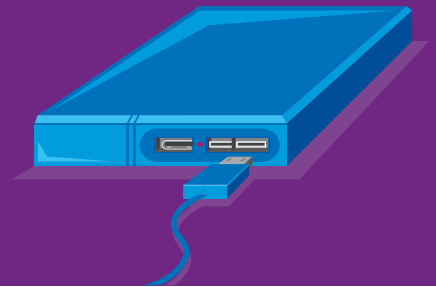


# Cloud Cyber Defense

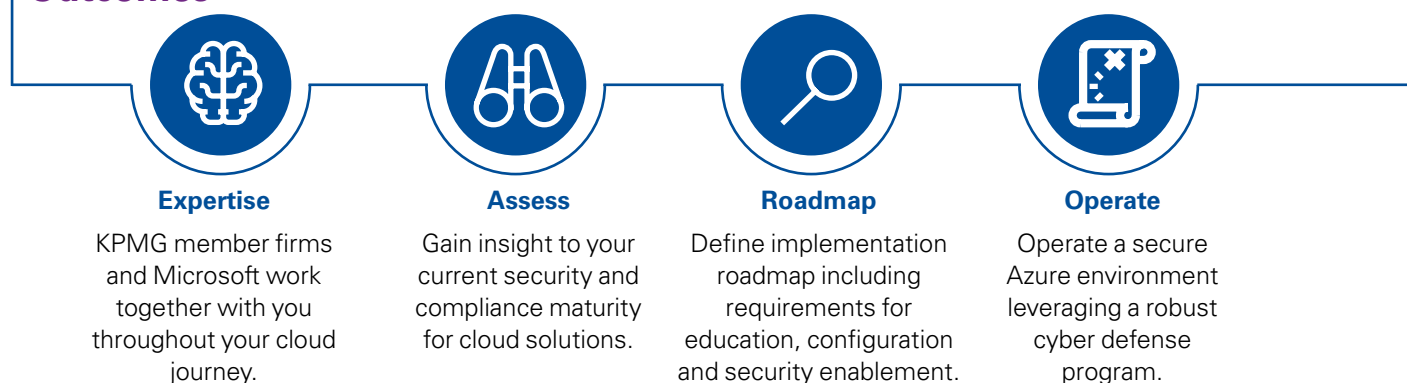
**Is your sensitive data adequately protected and appropriately managed and monitored in the cloud?**



As the world continues on its digitization revolution, the protection of sensitive data (i.e. PII, IP) is becoming a core business requirement. The market for cloud services has matured, and it is being deployed well beyond serving as a utility for storage and servers. IaaS, PaaS, and SaaS solutions enable the business to become more self-sufficient, reducing demand and freeing up additional resources to work on more complex and high-value initiatives.

While compliance and overall security and privacy responsibility cannot be outsourced to cloud service providers, there are scalable and flexible solutions that allow data owners to protect their data while outsourcing the day-to-day operations of their IT environments. KPMG and Microsoft are working together to build an approach that accelerates the customer's cloud transformation journey using security and compliance as an accelerator and enabler.

## Outcomes



## Capabilities

### Cyber Defense Program

The Cyber Defense Program enables organizations to understand and enhance their security visibility. Through an enabled Azure environment, organizations are presented with capabilities to operate and monitor secure environments in Azure. The current state is compared against your organization's target future state of security and compliance during the assessment phase. The architecture design, the operational model, and supporting security operations processes are aligned to support the future state. The strengths of Microsoft technology in Azure Security Center is then combined with the expertise of KPMG security professionals to enable the Cyber Defense Program resulting in people, process and technology recommendations map advising how to overcome identified gaps to maintain adequate security posture.

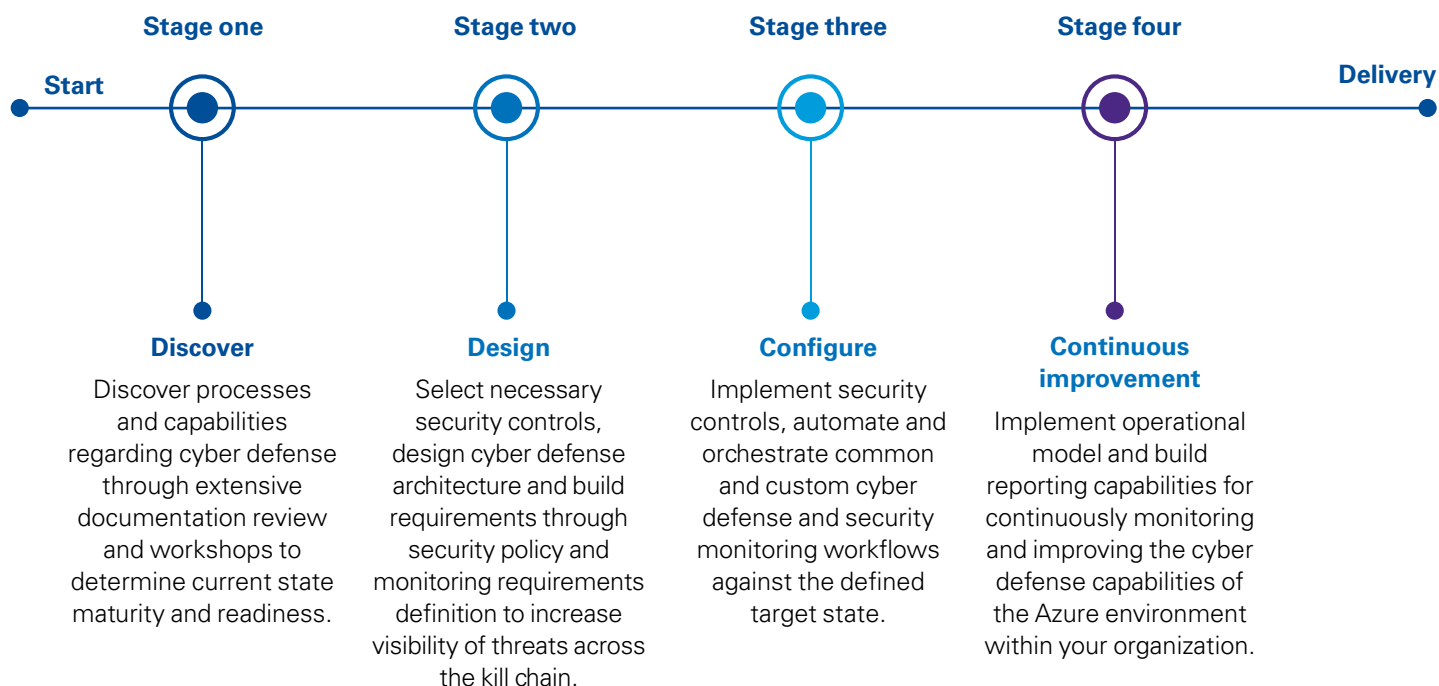
### KPMG: Cyber Defense model

The model focuses on advanced security operations and defense to design, implement, operate, and validate security and compliance to establish a program that supports the cyber defense strategy.

### Microsoft Azure Security Center

Azure Security Center offers a platform to monitor connected solutions and services, providing trust and security to meet business and regulatory requirements.

## Scope



## Why is cyber defense important?



Extending the security expertise of KPMG professionals with Microsoft technologies enables us to deliver broad ranging security solutions to clients that aim to contribute to both the security of their organizations, as well as their organizational business goals. ”

**Greg Bell**  
Global Cyber Security Co-Leader  
KPMG



KPMG's experience in security increase the value of Microsoft technology for our customers, by enabling them better security visibility through monitoring and response capabilities. By joining forces with KPMG in delivering solutions, we can better secure customers across the globe. ”

**Mandana Javaheri**  
Strategic, Enterprise and Cybersecurity  
Microsoft



The move to cloud impacts an organizations ability to monitor security risks and threats from traditional means. By combining Microsoft technology with KPMG security expertise, we enable clients to increase their visibility of security risks and threats and their ability to monitor and respond to meet organizational needs. ”

**Koos Wolters**  
Cyber Security Advisory Partner  
KPMG

## Why Microsoft and KPMG?

### People

Our respective security teams include recognized industry leaders and highly experienced professionals.

### Experience

Both Microsoft and KPMG member firms have supported clients on solving niche security challenges to delivering end-to-end cyber defense programs in complex and highly-regulated industries.

### Global, local

Between Microsoft and KPMG's world-wide reach, we are able to work in a consistent manner with global organizations and their entities across multiple territories at a local level.

### Approach

Using a tried and tested proprietary approach, Microsoft and KPMG professionals can help cut through complexity and expedite your cloud cyber defense activities.

[kpmg.com](https://kpmg.com)

[kpmg.com/socialmedia](https://kpmg.com/socialmedia)



The information contained herein is of a general nature and is not intended to address the circumstances of any particular individual or entity. Although we endeavor to provide accurate and timely information, there can be no guarantee that such information is accurate as of the date it is received or that it will continue to be accurate in the future. No one should act on such information without appropriate professional advice after a thorough examination of the particular situation.

© 2018 KPMG International Cooperative ("KPMG International"), a Swiss entity. Member firms of the KPMG network of independent member firms affiliated with KPMG International. KPMG International provides no client services. No member firm has any authority to obligate or bind KPMG International or any other member firm vis-à-vis third parties, nor does KPMG International have any such authority to obligate or bind any member firm. All rights reserved.

The KPMG name and logo are registered trademarks or trademarks of KPMG International.

Designed by Evalueserve. Publication name: Cloud Cyber Defense  
Publication number: 135465b-G. Publication date: June 2018