

# GMS Flash Alert

2020-064 | March 17, 2020



## Ireland - COVID-19: Delays in Employment Permit Processing Times

Ireland's Department of Business Enterprise and Innovation (DBEI) has announced that it will be prioritising the processing of all applications for employment permits for medical staff.<sup>1</sup> Consequently, there will be an impact on the processing of all other employment permit applications.

In the event of a slow down or shut down of the DBEI, your Employment Law team with the KPMG International member firm in Ireland understands that the processing of employment permit applications will continue, however hard copy employment permits may not be issued. The DBEI will be advising on contingency plans, if necessary, in due course. (KPMG in Ireland will endeavour to update readers of *GMS Flash Alert* should any significant developments occur.)

---

### WHY THIS MATTERS

Immigration counsel and clients need to be aware of these changes as it is likely that all non-medical staff employment permit applications that have already been submitted or are due to be submitted will be delayed. As a consequence of this, employees may not be able to start their employment on their intended date, and employers, therefore, will have to make provision for this possibility so that there is minimal disruption to the pursuit of their business objectives and their operations.

---

### Delay in Employment Permit Processing Times

As a result of the outbreak of COVID-19, the Employment Permits service of the DBEI will be affected. The DBEI has announced that it has begun the process of expediting all applications for employment permits for medical staff in the processing queue. Therefore, the timing of all other employment permit applications will be impacted, and employers and employees may need to plan for this.

The DBEI has contingency plans in place to deal with the developing situation of the outbreak of COVID-19 and is currently operating as normal.<sup>2</sup> However, there is a possibility of a slowdown in processing times or a complete shutdown of the Employment Permits service. In this event, the Employment Permits service will continue to carry out its priority work.

---

## KPMG NOTE

As this is a developing situation, it is important that employers and employees keep up to date with any notifications from the DBEI. At some stage it may not be possible to print and distribute employment permits, and should this happen the DBEI will be advising of the appropriate steps.

Should you have any concerns, please contact your usual labor/employment law or immigration specialist or the Corporate Immigration and Employment Law Team with KPMG in Ireland.

---

## FOOTNOTES:

1 For more information, see the DBEI's "Employment Permits" [webpage](#).

2 For insights into the DBEI's plans, and its response generally to the COVID-19 crisis, see the "Department News" [webpage](#).

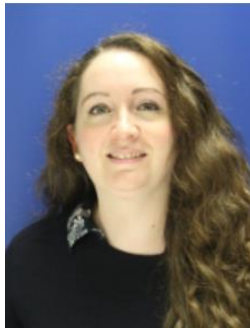
\* \* \* \*

## Contact us

For additional information or assistance, please contact your local GMS or People Services professional\* or one of the following professionals with the KPMG International member firm in Ireland:



**Aoife Newton**  
Tel. +353 1 700 4285  
[Aoife.newton@kpmg.ie](mailto:Aoife.newton@kpmg.ie)



**Elaine Norton**  
Tel. +353 1 700 4037  
[elaine.norton@kpmg.ie](mailto:elaine.norton@kpmg.ie)

*\* Please note that KPMG LLP (U.S.) does not offer immigration services or labour law services. However, KPMG Law LLP in Canada can assist clients with U.S. immigration matters.*

**The information contained in this newsletter was submitted by the KPMG International member firm in Ireland.**

© 2020 KPMG, an Irish partnership and a member firm of the KPMG network of independent member firms affiliated with KPMG International Cooperative ("KPMG International"), a Swiss entity. All rights reserved.

[www.kpmg.com](http://www.kpmg.com)

[kpmg.com/socialmedia](http://kpmg.com/socialmedia)



© 2020 KPMG LLP, a Delaware limited liability partnership and the U.S. member firm of the KPMG network of independent member firms affiliated with KPMG International Cooperative ("KPMG International"), a Swiss entity. All rights reserved. Printed in the U.S.A. NDPPS 530159

The KPMG name and logo are registered trademarks or trademarks of KPMG International.

The KPMG logo and name are trademarks of KPMG International. KPMG International is a Swiss cooperative that serves as a coordinating entity for a network of independent member firms. KPMG International provides no audit or other client services. Such services are provided solely by member firms in their respective geographic areas. KPMG International and its member firms are legally distinct and separate entities. They are not and nothing contained herein shall be construed to place these entities in the relationship of parents, subsidiaries, agents, partners, or joint ventures. No member firm has any authority (actual, apparent, implied or otherwise) to obligate or bind KPMG International or any member firm in any manner whatsoever. The information contained in herein is of a general nature and is not intended to address the circumstances of any particular individual or entity. Although we endeavor to provide accurate and timely information, there can be no guarantee that such information is accurate as of the date it is received or that it will continue to be accurate in the future. No one should act on such information without appropriate professional advice after a thorough examination of the particular situation.

Flash Alert is a GMS publication of KPMG LLP's Washington National Tax practice. To view this publication or recent prior issues online, please click [here](#). To learn more about our GMS practice, please visit us on the Internet: click [here](#) or go to <http://www.kpmg.com>.