



Managing through challenging times: tax and legal impacts

Managing tax compliance through and beyond COVID-19

Keeping Connected Global Tax, Legal & Mobility Virtual Meeting Series — Part 4

—

April 2020

Topics for discussion

Agenda



1 **The big picture**

2 **Optimizing tax teams**

3 **The role of technology**

4 **Virtual panel discussion**

5 **Q&A**

Administration

Polling questions

- Polling questions will appear as we proceed through the presentation.
- As mentioned, in order to receive the certificate of attendance, we require participants to take part in at least five of the eight polling questions.
- If you qualify for the certificate of attendance, it will be sent to you following the webcast.



Attendee questions

- You may submit questions in the *Ask a question* button on the left. We will answer as many questions as we can during Q&A. If we are unable to answer your question during the webcast, someone from KPMG may reply via phone or email following the webcast.
- For technical issues, please use the *Question Mark* button in the upper-right hand corner of the media player.



Your feedback

- When the webcast is over, the webcast player will automatically refresh to display an exit survey. Feel free to complete the survey, as your comments are very valuable to us.



Today's presenters



Michelle Quest

Head of Tax and Legal Services
KPMG in the UK

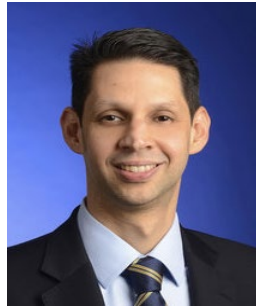
E: Michelle.Quest@KPMG.co.uk



Sean Bloodwell

Head of Global Compliance
Management Services, KPMG
International and Partner,
KPMG in the US

E: sbloodwell@kpmg.com



Jay Ayrton

EMA Head of Global
Compliance & Transformation,
KPMG International and
Partner, KPMG in the UK

E: jay.ayrton@kpmg.co.uk



Lachlan Wolfers

Head of Global Indirect Tax
Services
KPMG International

E: Lachlan.Wolfers@kpmg.com



Jenny Clarke

ASPAC Leader of Tax
Transformation and Compliance
KPMG Australia

E: jeclarke@kpmg.com.au



Brad Brown

Global Head of Tax Technology
& Innovation, KPMG International
and Partner, KPMG in the US

E: bradbrown@kpmg.com



The big picture



Michelle Quest
Head of Tax and Legal Services
KPMG in the UK
E: Michelle.Quest@KPMG.co.uk



Sean Bloodwell
Head of Global Compliance Management
Services, KPMG International, and Partner,
KPMG in the US
E: sbloodwell@kpmg.com



The big picture



Legislative
relief



Working remote-technology
& best practices



Team spirit & morale



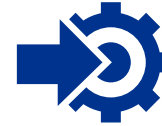
Supporting the
business



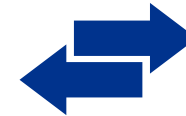
Backup plans



Budget impact



Integration with the rest
of the organization



Shifting priorities



Accounting/tax
issues



Best laid plans... the
need to be flexible



Risk
management



Managing my
vendors/suppliers



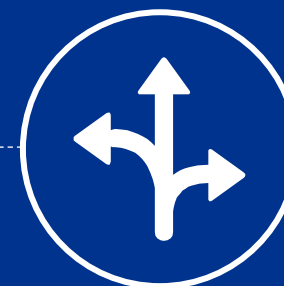
Optimizing tax teams



Jay Ayrton
EMA Head of Global Compliance
& Transformation, KPMG
International and Partner, KPMG
in the UK
E: jay.ayrton@kpmg.co.uk



Lachlan Wolfers
Head of Global Indirect Tax Services
KPMG International
E: Lachlan.Wolfers@kpmg.com



Optimizing your tax team



Tax team

- ✓ Who is your tax team these days?
- ✓ How you can lead your tax team from behind a screen?
- ✓ Do you need to look beyond Group Tax to get the job done?
- ✓ Can you use this opportunity to expand your global reach and improve communication?
- ✓ Is your outsource provider the backstop you never knew you needed?

Ways of working

- ✓ What are new core hours to meet business demands?
- ✓ What are reasonable Protocols – video cams, meetings discipline?
- ✓ What does the new team calendar look like?
- ✓ How do you keep your team well, safe and engaged?
- ✓ How do you accommodate the new elements of diversity & inclusion which come with virtual working?

Tax risk

- ✓ Is your business continuity fit for purpose?
- ✓ What does the new tax risk landscape look like?
- ✓ What do you need to do to maintain good compliance including new rules, relaxations, dispensations?
- ✓ Are there calls you can make now about how you manage tax reporting?
- ✓ How can you be a business partner for these times?

Technology

- ✓ What tools can you mobilize quickly?
- ✓ What are your core technology dependencies?
- ✓ Are these dependencies secured?
- ✓ What knowledge and information sources do you have on hand to keep up to date and to share with your tax and finance teams?
- ✓ Potential to overwhelm with technology including multiple intrusions?



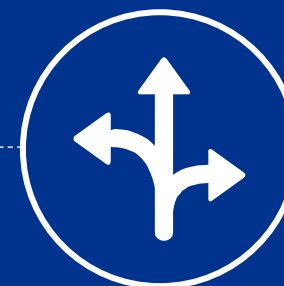
The role of technology

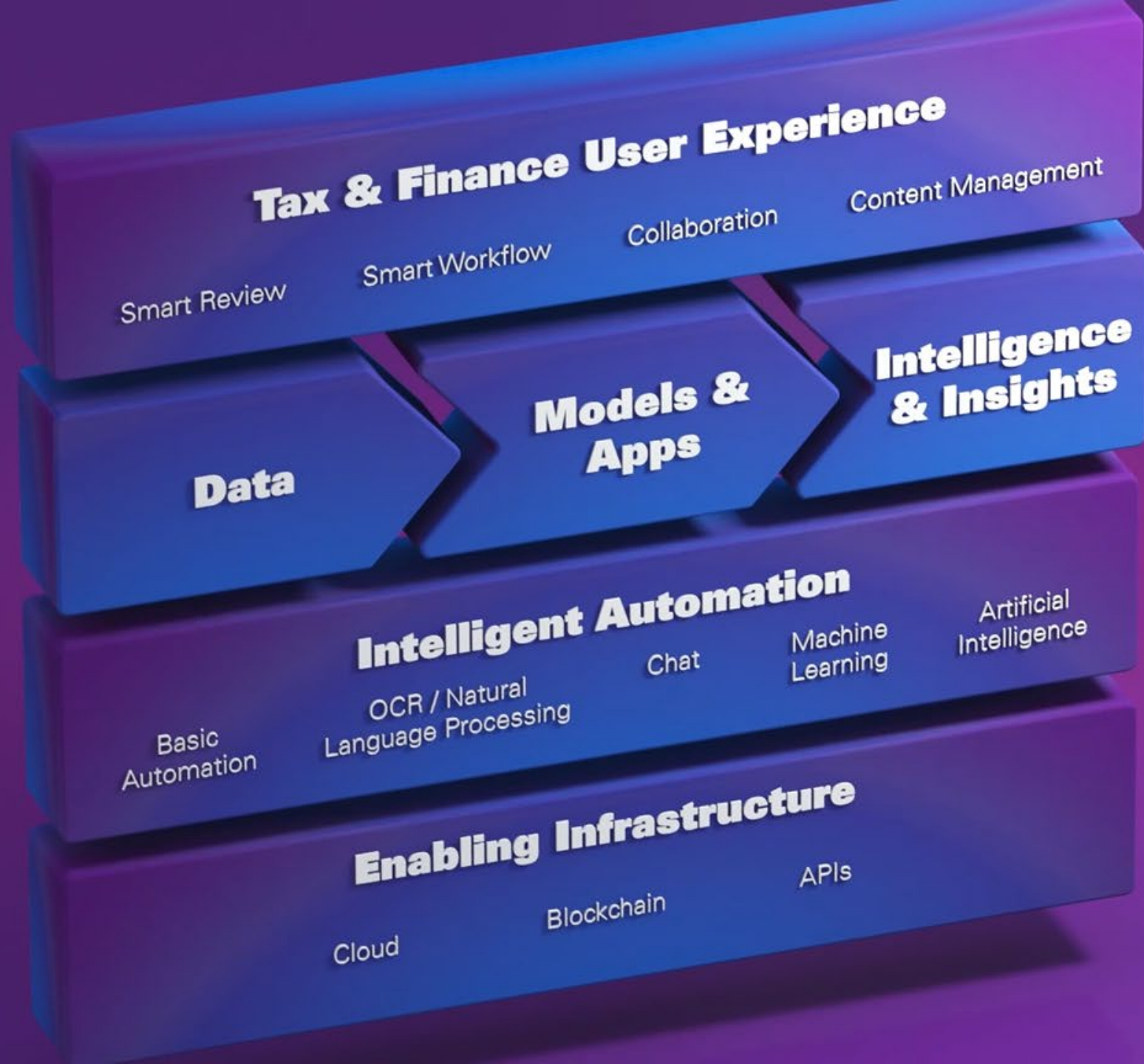


Brad Brown
Global Head of Tax Technology & Innovation, KPMG International, and Partner, KPMG in the US
E: bradbrown@kpmg.com



Jenny Clarke
ASPAC Leader of Tax Transformation and Compliance
KPMG Australia
E: jeclarke@kpmg.com.au





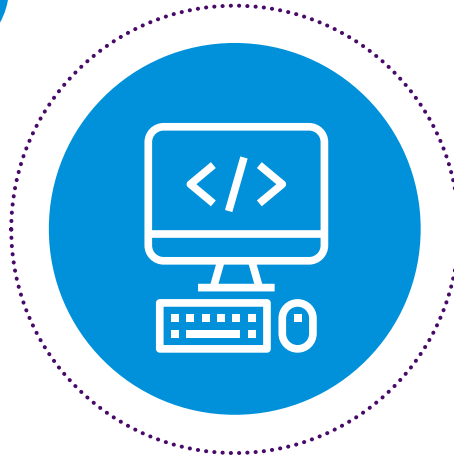
Technology Building Blocks

The technology building blocks are leading us quickly to...

Data convergence



API driven integration



Human-in-the-Loop



Virtual panel discussion



Michelle Quest

Head of Tax and Legal Services
KPMG in the UK

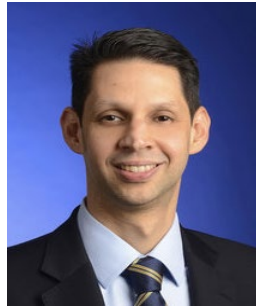
E: Michelle.Quest@KPMG.co.uk



Sean Bloodwell

Head of Global Compliance
Management Services, KPMG
International and Partner,
KPMG in the US

E: sbloodwell@kpmg.com



Jay Ayrton

EMA Head of Global
Compliance & Transformation,
KPMG International and
Partner, KPMG in the UK

E: jay.ayrton@kpmg.co.uk



Lachlan Wolfers

Head of Global Indirect Tax
Services
KPMG International

E: Lachlan.Wolfers@kpmg.com



Jenny Clarke

ASPAC Leader of Tax
Transformation and Compliance
KPMG Australia

E: jeclarke@kpmg.com.au



Brad Brown

Global Head of Tax Technology
& Innovation, KPMG International
and Partner, KPMG in the US

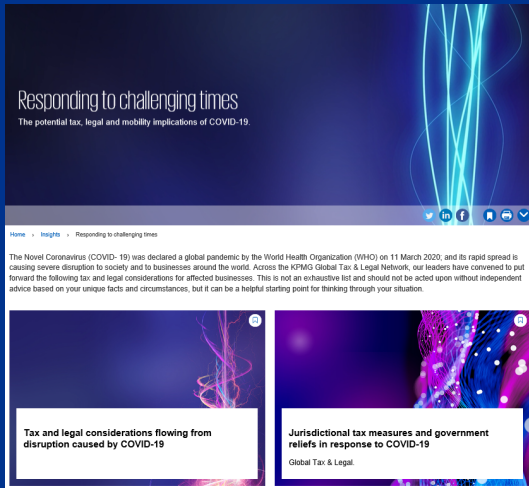
E: bradbrown@kpmg.com



Questions?



Resources



Responding to challenging times

KPMG site dedicated to business implications of COVID-19 on a global scale — tax, legal and mobility focus

<https://home.kpmg/xx/en/home/insights/2020/03/responding-in-a-crisis.html>



Tax News Flash — COVID-19

KPMG's ongoing roundup of COVID-19 measures taken around the world in response to the situation

<https://home.kpmg/us/en/home/insights/2020/04/taxnewsflash-coronavirus-covid-19-developments.html>



Connect with us

**Michelle Quest**

Head of Tax and Legal Services
KPMG in the UK

E: Michelle.Quest@KPMG.co.uk

**Sean Bloodwell**

Head of Global Compliance
Management Services, KPMG
International and Partner,
KPMG in the US

E: sbloodwell@kpmg.com

**Jay Ayrton**

EMA Head of Global
Compliance & Transformation,
KPMG International and
Partner, KPMG in the UK

E: jay.ayrton@kpmg.co.uk

**Lachlan Wolfers**

Head of Global Indirect Tax
Services
KPMG International

E: Lachlan.Wolfers@kpmg.com

**Jenny Clarke**

ASPAC Leader of Tax
Transformation and Compliance
KPMG Australia

E: jeclarke@kpmg.com.au

**Brad Brown**

Global Head of Tax Technology
& Innovation, KPMG International
and Partner, KPMG in the US

E: bradbrown@kpmg.com



Thank you



Kindly note that some or all of the services described herein may not be permissible for KPMG audit clients and their affiliates or related entities. KPMG LLP (U.S. member firm) does not provide legal services.

home.kpmg/socialmedia



© 2020 KPMG International Cooperative ("KPMG International"), a Swiss entity. Member firms of the KPMG network of independent firms are affiliated with KPMG International. KPMG International provides no client services. No member firm has any authority to obligate or bind KPMG International or any other member firm vis-à-vis third parties, nor does KPMG International have any such authority to obligate or bind any member firm. All rights reserved.

The information contained herein is of a general nature and is not intended to address the circumstances of any particular individual or entity. Although we endeavor to provide accurate and timely information, there can be no guarantee that such information is accurate as of the date it is received or that it will continue to be accurate in the future. No one should act on such information without appropriate professional advice after a thorough examination of the particular situation.

The KPMG name and logo are registered trademarks or trademarks of KPMG International.