



# GMS Flash Alert

Immigration Edition

2020-248 | May 22, 2020



## Ireland - COVID-19: Temporary Arrangements for Irish Residence Permit Registrations

As previously reported (see GMS [Flash Alert 2020-235](#) (15 May 2020)), the Burgh Quay Registration Office in Dublin and all local Registration offices are currently closed. The reopening of the offices will be kept under review as the situation develops. In light of the uncertainties caused by COVID-19 and the difficulties some people can encounter as a result of not having an Irish Residence Permit (IRP) card, the authorities have introduced certain temporary measures for between now and 20 July 2020.<sup>1</sup> Certain individuals in Ireland awaiting their first IRP registration, can apply to the Burgh Quay Registration Office to request a letter confirming their permission to remain in Ireland.

### WHY THIS MATTERS

Employers should note that individuals who have recently entered Ireland and have been unable to register and obtain an IRP card will be eligible, in certain circumstances, to obtain a letter which will confirm their legal status in Ireland. This should help alleviate any concerns about what to do for non-European Economic Area (EEA) employees with only entry stamps as evidence of their legal right to be in Ireland.

### Temporary Arrangements for Individuals Awaiting First-Time Registration for Irish Residence Permits

The Burgh Quay Registration Office in Dublin and all local Registration offices remain closed and will only reopen when it is safe to do so. To address the uncertainties regarding COVID-19 and the difficulties of not having a valid IRP card, the Immigration Service Delivery Function has implemented a temporary measure for between now and 20 July 2020.

Non-EEA individuals currently in Ireland awaiting their first-time registration for certain categories of stamps (as listed below) and who hold a valid permission to remain, i.e., a valid entry stamp, can apply to the Burgh Quay Registration Office to request a letter confirming their permission to remain in Ireland and the conditions attaching to their permission.

Stamp 1	Employment Permit Stamp 1 (General and Critical Skills)
	Hosting Agreements
Stamp 1A	Trainee Accountant
Stamp 1G	Spouse/Partner of Critical Skills Employment Permit Holder
Stamp 2	Student
Stamp 4	Spouse of an Irish National
	Family Reunification Beneficiaries

The application and all required documentation must be submitted electronically to the Burgh Quay Registration Office in Dublin. There will be no changes to eligibility for permissions; all usual criteria will continue to apply.

Should permission be granted, individuals will still be required to register their permission in the normal manner once the registration offices reopen. When the registration offices do reopen, priority will be given to those seeking to register for the first time. Individuals who were registering for the first time and had their appointments cancelled as a result of the registration office closures will have their appointments rescheduled automatically. Other appointments will be made available exclusively for other first-time applicants.

### Entry to Ireland and Visa-Required Nationals

Additionally, for those individuals whose permissions have been extended, this does not include entry to Ireland for visa-required nationals. Accordingly, non-EEA visa-required nationals who leave Ireland after the expiry of their permission will need to apply for an entry visa to be able to return to Ireland. However, due to the temporary suspension of the entry visa system as a result of COVID-19, an individual is currently only able to apply for an emergency/priority visa in limited circumstances.

### KPMG NOTE

Clients should be aware of these changes as they can now confirm the status of non-EEA employees who are seeking to register their residence permissions in Ireland for the first time.

For advice on this changing situation, please contact your local qualified immigration counsel or the Corporate Immigration and Employment Law Team with KPMG in Ireland.

### FOOTNOTE:

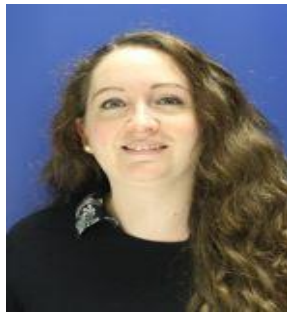
1 For additional information and the announcement on this policy, see: <http://www.inis.gov.ie/en/INIS/Pages/COVID-19-updates-and-announcements> .

## Contact us

For additional information or assistance, please contact your local GMS or People Services professional\* or one of the following professionals with the KPMG International member firm in Ireland:



**Aoife Newton**  
Tel. +353 1 700 4285  
[Aoife.newton@kpmg.ie](mailto:Aoife.newton@kpmg.ie)



**Elaine Norton**  
Tel. +353 1 700 4037  
[Elaine.norton@kpmg.ie](mailto:Elaine.norton@kpmg.ie)

*\* Please note that KPMG LLP (U.S.) does not provide any immigration services. However, KPMG Law LLP in Canada can assist clients with U.S. immigration matters.*

**The information contained in this newsletter was submitted by the KPMG International member firm in Ireland.**

© 2020 KPMG, an Irish partnership and a member firm of the KPMG network of independent member firms affiliated with KPMG International Cooperative ("KPMG International"), a Swiss entity. All rights reserved.

[www.kpmg.com](http://www.kpmg.com)

[kpmg.com/socialmedia](http://kpmg.com/socialmedia)



© 2020 KPMG LLP, a Delaware limited liability partnership and the U.S. member firm of the KPMG network of independent member firms affiliated with KPMG International Cooperative ("KPMG International"), a Swiss entity. All rights reserved. Printed in the U.S.A. NDPPS 530159

The KPMG name and logo are registered trademarks or trademarks of KPMG International.

The KPMG logo and name are trademarks of KPMG International. KPMG International is a Swiss cooperative that serves as a coordinating entity for a network of independent member firms. KPMG International provides no audit or other client services. Such services are provided solely by member firms in their respective geographic areas. KPMG International and its member firms are legally distinct and separate entities. They are not and nothing contained herein shall be construed to place these entities in the relationship of parents, subsidiaries, agents, partners, or joint ventures. No member firm has any authority (actual, apparent, implied or otherwise) to obligate or bind KPMG International or any member firm in any manner whatsoever. The information contained in herein is of a general nature and is not intended to address the circumstances of any particular individual or entity. Although we endeavor to provide accurate and timely information, there can be no guarantee that such information is accurate as of the date it is received or that it will continue to be accurate in the future. No one should act on such information without appropriate professional advice after a thorough examination of the particular situation.

*Flash Alert* is a GMS publication of KPMG LLP's Washington National Tax practice. To view this publication or recent prior issues online, please click [here](#). To learn more about our GMS practice, please visit us on the Internet: click [here](#) or go to <http://www.kpmg.com>.