

GMS Flash Alert



2020-266 | June 3, 2020

Argentina - COVID-19: Filing Deadlines Extended for Withholding Agents

With General Resolution 4725/2020, Argentina's tax authorities have announced that the filing period for income tax returns prepared by withholding agents¹ for the 2019 fiscal period is now being extended, exceptionally, until July 3, 2020.²

WHY THIS MATTERS

The General Resolution aims to facilitate taxpayers' and tax providers' compliance with their tax and reporting obligations during this difficult period.

There is an employer reporting obligation that companies must comply with. Meeting this obligation is important as any delays or errors in reporting could negatively impact employees given that this information forms a critical part of their own tax return obligations.

More Details

The amount determined in the above-mentioned annual tax return will be withheld or, if applicable, reimbursed, when the first payment is made or in subsequent payments (if it is insufficient) and until August 10, 2020, inclusive.

The amount must be reported and paid up through the due dates set for the filing of the tax return. Any resulting balance corresponding to the first fortnight of July 2020 of the withholding control system (SICORE), must be reported and paid on the same schedule, with the withholding date being July 3, 2020.

If final or informative returns that relate to an individual's termination of employment or a change of withholding agent that are due during the months of January, February, March, April, and May 2020, are submitted up through June 30, 2020, they will be considered as timely filed.

KPMG NOTE

We encourage employers to discuss their annual return obligations with their professional service providers, and determine if they have appropriate systems and procedures in place to meet their compliance obligations. Penalties may be imposed if the submissions are not made on time.

FOOTNOTES:

1 As stipulated in General Resolution No. 4003-E / 2017.

2 See (in Spanish) the “Resolución General 4725/2020” published in the *Boletín Oficial* at: <https://www.boletinoficial.gob.ar/detalleAviso/primera/229883/20200528> .

* * * *

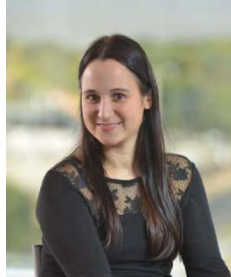
Contact us

For additional information or assistance, please contact your local GMS or People Services professional or one of the following professionals with the KPMG International member firm in Argentina:



Rodolfo Canese
Partner

Tel. + 54 11 4316 5643
rcanese@kpmg.com.ar



Cecilia Nuñez
Senior Manager

Tel. + 54 11 4316 5749
cnunez@kpmg.com.ar

The information contained in this newsletter was submitted by the KPMG International member firm in Argentina.

© 2020 KPMG, una sociedad argentina y firma miembro de la red de firmas miembro independientes de KPMG afiliadas a KPMG International Cooperative ("KPMG International"), una entidad suiza. Derechos reservados.

www.kpmg.com

kpmg.com/socialmedia



© 2020 KPMG LLP, a Delaware limited liability partnership and the U.S. member firm of the KPMG network of independent member firms affiliated with KPMG International Cooperative ("KPMG International"), a Swiss entity. All rights reserved. Printed in the U.S.A. NDPPS 530159

The KPMG name and logo are registered trademarks or trademarks of KPMG International.

The KPMG logo and name are trademarks of KPMG International. KPMG International is a Swiss cooperative that serves as a coordinating entity for a network of independent member firms. KPMG International provides no audit or other client services. Such services are provided solely by member firms in their respective geographic areas. KPMG International and its member firms are legally distinct and separate entities. They are not and nothing contained herein shall be construed to place these entities in the relationship of parents, subsidiaries, agents, partners, or joint ventures. No member firm has any authority (actual, apparent, implied or otherwise) to obligate or bind KPMG International or any member firm in any manner whatsoever. The information contained in herein is of a general nature and is not intended to address the circumstances of any particular individual or entity. Although we endeavor to provide accurate and timely information, there can be no guarantee that such information is accurate as of the date it is received or that it will continue to be accurate in the future. No one should act on such information without appropriate professional advice after a thorough examination of the particular situation.

Flash Alert is a GMS publication of KPMG LLP's Washington National Tax practice. To view this publication or recent prior issues online, please click [here](#). To learn more about our GMS practice, please visit us on the Internet: click [here](#) or go to <http://www.kpmg.com>.