



GMS Flash Alert

Immigration Edition

2021-043 | February 1, 2021



Ireland - COVID-19: New Visa Requirements for South Africa, South American Countries

Due to the emergence of new COVID-19 variants, the Irish government has introduced new Irish entry visa and transit visa requirements for individuals travelling to Ireland who are nationals of South Africa and South American countries.¹

WHY THIS MATTERS

The introduction of these new visa requirements may affect employers and their globally-mobile employees who are nationals of the listed countries in terms of the potential need for changes to immediate upcoming travel plans and new procedural requirements for travel to Ireland going forward.

New Entry Visa Requirements for Nationals of South Africa and South American countries

The Irish government has introduced new Irish entry visa and transit visa requirements for individuals travelling to Ireland who are nationals of the following countries with immediate effect: Argentina, Bolivia, Brazil, Chile, Colombia, Guyana, Paraguay, Uruguay, Ecuador, Peru, Suriname, and South Africa.

This visa requirement applies to short-stay visas (business travellers/AWS applicants), long-stay visas (employment permit holders), and transit visas. These measures will remain in place until 5 March 2021, at which point they will be subject to further review. While Irish Visa Offices will continue to accept long-stay visa applications from nationals of the above-listed countries, a visa decision will not be issued until on or after 5 March 2021.

Visa applications will continue to be processed for nationals of the above-listed countries that fall into a priority or emergency category as determined by the EU Council Recommendation 2020/1475.² This includes workers exercising

© 2021 KPMG, an Irish partnership and a member firm of the KPMG network of independent member firms affiliated with KPMG International Cooperative ("KPMG International"), a Swiss entity. All rights reserved. Printed in the U.S.A. NDPPS 530159

occupations including health-care workers, frontier and posted workers, and persons travelling for imperative business reasons.

All passengers arriving in Ireland will also need to produce a negative PCR (COVID-19) test taken up to 72 hours prior to arrival in Ireland as highlighted in our previous [GMS Flash Alert 2021-024](#) (15 January 2021).

KPMG NOTE

Organisations and their employees that are nationals of the above countries with planned travel to Ireland will need to consider these new requirements and may need to build additional time into their immigration/travel processes to be able to meet the new requirement of obtaining an Irish entry visa.

Employees who are nationals of the above countries who hold a valid Irish Resident Permit (IRP) and who are currently outside Ireland may wish to consider returning to Ireland prior to their IRP expiration date to make sure they are not subject to delays caused by these new entry visa requirements.

For advice on this changing situation, please contact your travel agent and local qualified immigration counsel or the Corporate Immigration and Employment Law Team with KPMG in Ireland.

FOOTNOTES:

1 Department of the Taoiseach, Press Release, "Extension of Level 5 restrictions and introduction of measures for International Travel" at: <https://www.gov.ie/en/press-release/e2374-extension-of-level-5-restrictions-and-introduction-of-measures-for-international-travel/> .

2 Council Recommendation (EU) 2020/1475 at: <https://eur-lex.europa.eu/legal-content/EN/TXT/HTML/?uri=CELEX:32020H1475&from=EN> .

* * * *

Contact us

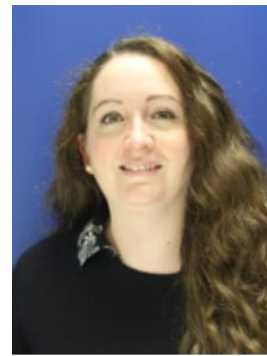
For additional information or assistance, please contact your local GMS or People Services professional* or one of the following professionals with the KPMG International member firm in Ireland:



Aoife Newton
Tel. +353 1 700 4285
aoife.newton@kpmg.ie



Nicola Booth
Tel. +353 1 700 4880
nicola.booth@kpmg.ie



Elaine Norton
Tel. +353 1 700 4037
elaine.norton@kpmg.ie

** Please note that KPMG LLP (U.S.) does not provide any immigration services. However, KPMG Law LLP in Canada can assist clients with U.S. immigration matters.*

The information contained in this newsletter was submitted by the KPMG International member firm in Ireland.

© 2021 KPMG LLP, an Irish partnership and a member firm of the KPMG network of independent member firms affiliated with KPMG International Cooperative (“KPMG International”), a Swiss entity. All rights reserved.

www.kpmg.com

kpmg.com/socialmedia



© 2021 KPMG LLP, a Delaware limited liability partnership and a member firm of the KPMG global organization of independent member firms affiliated with KPMG International Limited, a private English company limited by guarantee. All rights reserved. Printed in the U.S.A. NDPPS 530159

The KPMG name and logo are registered trademarks or trademarks of KPMG International. The KPMG name and logo are trademarks used under license by the independent member firms of the KPMG global organization.

KPMG LLP is the U.S. firm of the KPMG global organization of independent professional services firms providing Audit, Tax and Advisory services. The KPMG global organization operates in 147 countries and territories and has more than 219,000 people working in member firms around the world.

Each KPMG firm is a legally distinct and separate entity and describes itself as such. KPMG International Limited is a private English company limited by guarantee. KPMG International Limited and its related entities do not provide services to clients.

Flash Alert is a GMS publication of KPMG LLP’s Washington National Tax practice. To view this publication or recent prior issues online, please click here. To learn more about our GMS practice, please visit us on the Internet: click here or go to <http://www.kpmg.com>.