



GMS Flash Alert

Immigration Edition

2021-294 | November 30, 2021

Ireland - COVID-19: New Visa Requirements for Individuals Coming from Specified Countries

Ireland's Immigration Service Delivery (ISD) has announced new entry visa and transit visa requirements for nationals from South Africa, Botswana, Eswatini, Lesotho, and Namibia. The measures took effect from midnight on 26 November 2021.¹ Visa applications from nationals of these countries, and from Zimbabwe and Mozambique, will only be processed if they meet the emergency/priority criteria set out by ISD. These measures have been put in place in response to the discovery of the new "omicron" variant of the coronavirus in the aforementioned countries.

WHY THIS MATTERS

Employers should note that entry visa and transit visa application requirements have been extended to cover South Africa, Botswana, Eswatini, Lesotho, and Namibia. Visa applications are only being accepted for emergency/priority situations from nationals of these countries and from Zimbabwe and Mozambique.

This will have the impact of severely restricting the entry of individuals travelling between these countries and Ireland, including individuals who are transiting through these countries into Ireland.

Employers and their mobile employees may wish to reconsider their plans if travelling between South Africa, Botswana, Eswatini, Lesotho, Namibia, Mozambique, Zimbabwe, and Ireland.

New Visa Requirements

In response to the evolving COVID-19 situation, ISD has announced that from midnight on 26 November 2021, the entry visa and transit visa system has been extended to cover further countries and applications must meet the emergency/priority criteria. The emergency/priority criteria list is extensive and includes: all long-stay employment applications supported by an employment permit or Atypical Working Scheme permission; join-family visa applications; and, persons entitled to avail of the provision of the EU Free Movement Directive.

Who Does This Apply to?

- I. Nationals from South Africa, Botswana, Eswatini, Lesotho, and Namibia.
- II. Nationals from South Africa, Botswana, Eswatini, Lesotho, Namibia, Zimbabwe, and Mozambique will have their entry visa applications accepted and processed where they meet the emergency/priority criteria.

KPMG NOTE

Individuals and their employers should be aware of these changes regarding the update to entry visa requirements.

For advice on this changing situation, please contact the Corporate Immigration and Employment Law Team with KPMG in Ireland (see the Contact Us section below).

FOOTNOTE:

- 1 See "COVID-19 Visa Arrangements" at: <https://www.irishimmigration.ie/covid-19-visa-arrangements/>.

* * * *

Contact us

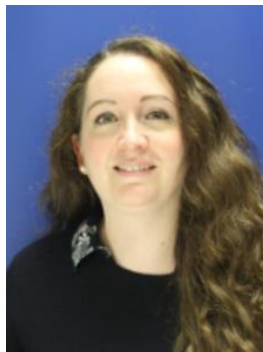
For additional information or assistance, please contact your local GMS or People Services professional* or one of the following professionals with the KPMG International member firm in Ireland:



Aoife Newton

Tel. +353 1 700 4285

aoife.newton@kpmg.ie



Elaine Norton

Tel. +353 1 700 4037

elaine.norton@kpmg.ie

** Please note that KPMG LLP (U.S.) does not provide any immigration services. However, KPMG Law LLP in Canada can assist clients with U.S. immigration matters.*

The information contained in this newsletter was submitted by the KPMG International member firm in Ireland.

© 2021 KPMG, an Irish partnership and a member firm of the KPMG global organisation of independent member firms affiliated with KPMG International Limited, a private English company limited by guarantee. All rights reserved.

www.kpmg.com

kpmg.com/socialmedia



© 2021 KPMG LLP, a Delaware limited liability partnership and a member firm of the KPMG global organization of independent member firms affiliated with KPMG International Limited, a private English company limited by guarantee. All rights reserved.

The KPMG name and logo are registered trademarks or trademarks of KPMG International. The KPMG name and logo are trademarks used under license by the independent member firms of the KPMG global organization.

KPMG LLP is the U.S. firm of the KPMG global organization of independent professional services firms providing Audit, Tax and Advisory services. The KPMG global organization operates in 147 countries and territories and has more than 219,000 people working in member firms around the world.

Each KPMG firm is a legally distinct and separate entity and describes itself as such. KPMG International Limited is a private English company limited by guarantee. KPMG International Limited and its related entities do not provide services to clients.

Flash Alert is a GMS publication of KPMG LLP's Washington National Tax practice. To view this publication or recent prior issues online, please click [here](#). To learn more about our GMS practice, please visit us on the Internet: click [here](#) or go to <http://www.kpmg.com>.

Flash Alert is a GMS publication of KPMG LLP's Washington National Tax practice. To view this publication or recent prior issues online, please click [here](#). To learn more about our GMS practice, please visit us on the Internet: click [here](#) or go to <http://www.kpmg.com>.